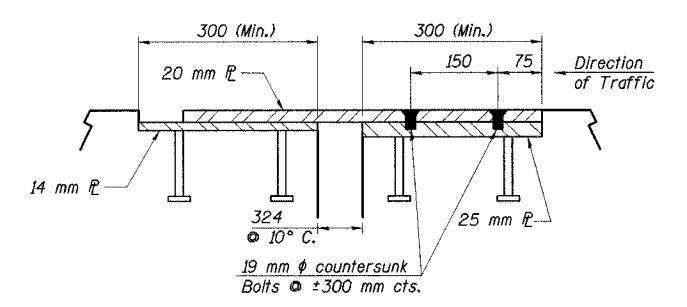
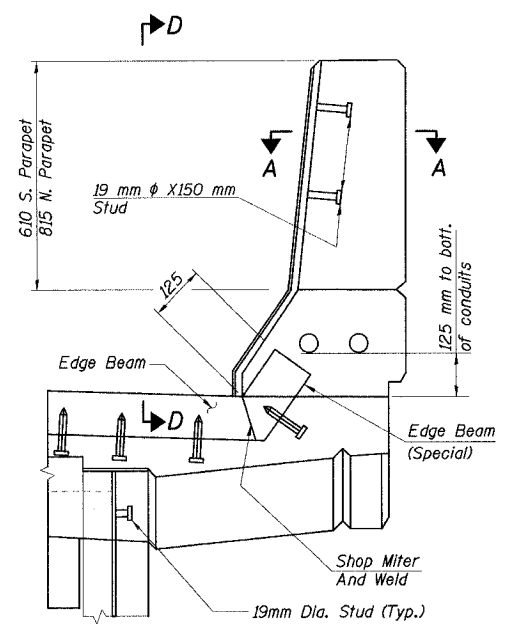
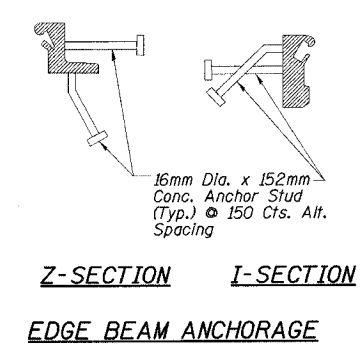
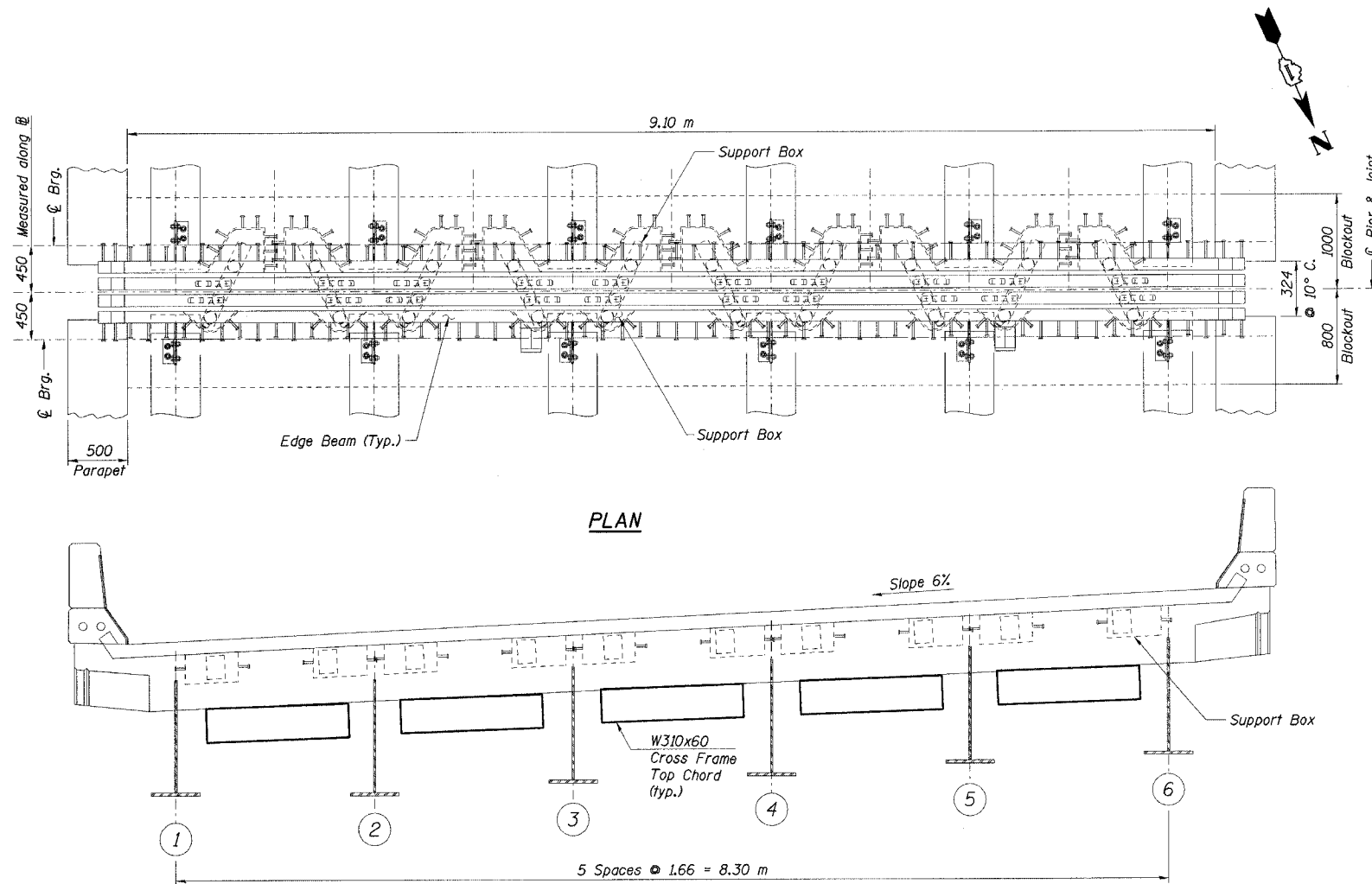


STATE OF ILLINOIS
DEPARTMENT OF TRANSPORTATION

ROUTE NO.	SECTION	COUNTY	TOTAL SHEETS	SHEET NO.	SHEET NO. 43 91 SHEETS
F. A. I. 80/94	0203.1B	COOK	200	105	
FED. ROAD DIST. NO. 1	ILLINOIS	FED. AID PROJECT-			
CONTRACT NO. 62854					



- Notes:
1. Modular Expansion Joint shall be designed according to the latest AASHTO Specifications for MS18 truck loading with impact.
 2. Joint shall be fabricated and installed according to the manufacturer's recommendations and as shown in Special Provisions for Modular Joint System and as approved by the Engineer.
 3. Joint shall be fabricated to conform to the roadway profile and cross-slopes.
 4. All Structural Steel elements such as separator beams, edge beams & support bars shall be fabricated with AASHTO M 270M Grade 345 Steel unless specified otherwise by the manufacturer.
 5. Barrier Plates to be AASHTO M270, Grade 36 and to be Hot-Dipped Galvanized according to AASHTO M111 after fabrication.

6. CTSK. bolts and Concrete Inserts to be Hot-Dipped Galvanized according to AASHTO M232.
7. The Cost of Furnishing the Barrier Plates, the CTSK. bolts, the Stud Anchors and the installation of these items are included with Modular Expansion Joint.
8. Modular Expansion Joints shall be shipped in one piece unless noted.
9. Concrete Anchor Studs shall satisfy Article 1006.32 of the Standard Specifications.
10. All splices of center beams and edge beams located in the roadway shall use full penetration welds. (Upturn splices may be partial penetration welds).
11. The Swivel modular expansion joint shall be either the MAURER Swivel system by the D. S. Brown Company, or the WABO X-CEL system by the Watson Bowman Acme Corporation. The joint shall provide the following movement:
12. Joint openings shall be adjusted according to Article 503.10(c) of the Standard Specifications when the blockout is cast at an ambient temperature other than 10°C.
13. See Deck Reinforcement plans for bar sizes and designation and blockout dimensions.
14. All dimensions are in mm except as noted.
15. The expansion joint device shall be prefabricated modular assembly with multiple support bars and separator beams, providing a continuous seal across the deck.
16. Modular Expansion Joints shall be shipped in one piece unless noted.
17. No aluminum components shall be allowed.

Location	Longitudinal Movement (mm)	Differential Non-Parallel Long. Movement (mm)	Size (mm)
Piers 3 & 6	200	150	240

All Anchor Studs Shall Be Included With Modular Expansion Joint. (Unless Noted)

Note:
All dimensions are in millimeters except as noted.

DESIGNED	GPM
CHECKED	DD
DRAWN	JRB
CHECKED	GPM

JBeauchamp
E:\34562\CADD\B1\CTR-28-2804\cda\j150184e-2804.dgn
28-MAR-2005 12:32

BILL OF MATERIAL

Item	Unit	Total
Erecting Modular Expansion Joint - Swivel 240mm	m	19.4

ILLINOIS DEPARTMENT OF TRANSPORTATION
I-94/IL 394 SOUTH BOUND
SWIVEL MODULAR EXPANSION JOINT
DETAILS AT PIERS 3 & 6
WB I-80/94 TO SB IL 394 - RAMP G
FAI 80/94 - FAP 332 SECTION 0203.1B
COOK COUNTY
STA. 120+796.063 STRUCTURE NO. 016-2804
DATE 3/23/05
SCALE ---

HNTB