

STATE OF ILLINOIS  
DEPARTMENT OF TRANSPORTATION

ROUTE NO.	SECTION	COUNTY	TOTAL SHEETS	SHEET NO.	SHEET NO. 70 91 SHEETS
F. A. I. 80/94	0203.1B	COOK	200	132	
FED. ROAD DIST. NO. 1 ILLINOIS FED. AID PROJECT - CONTRACT NO. 62854					

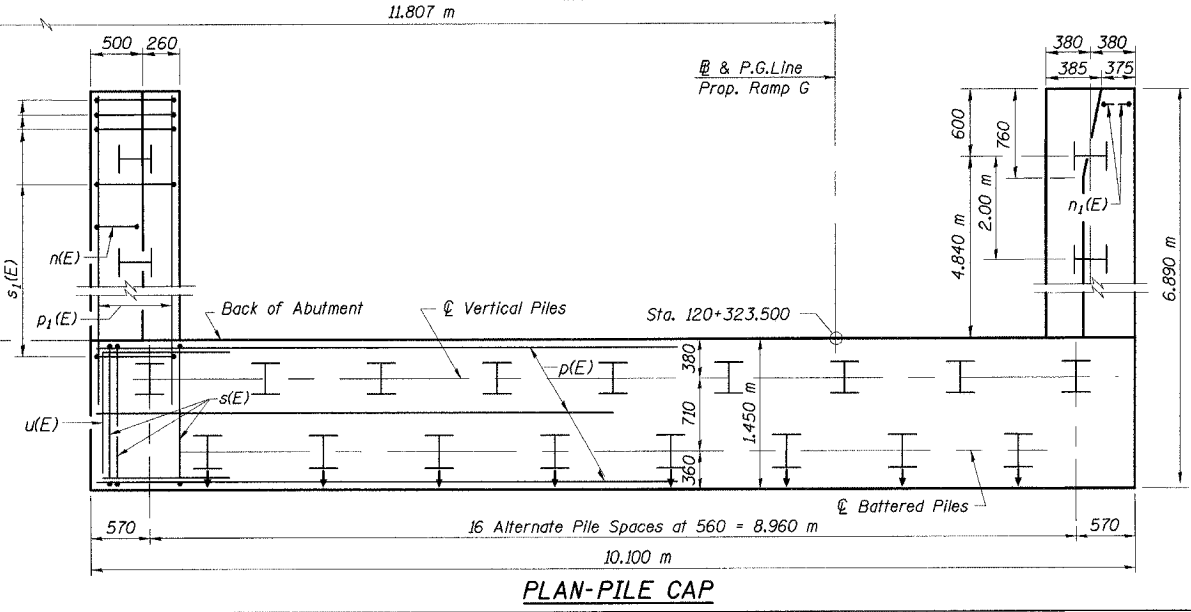
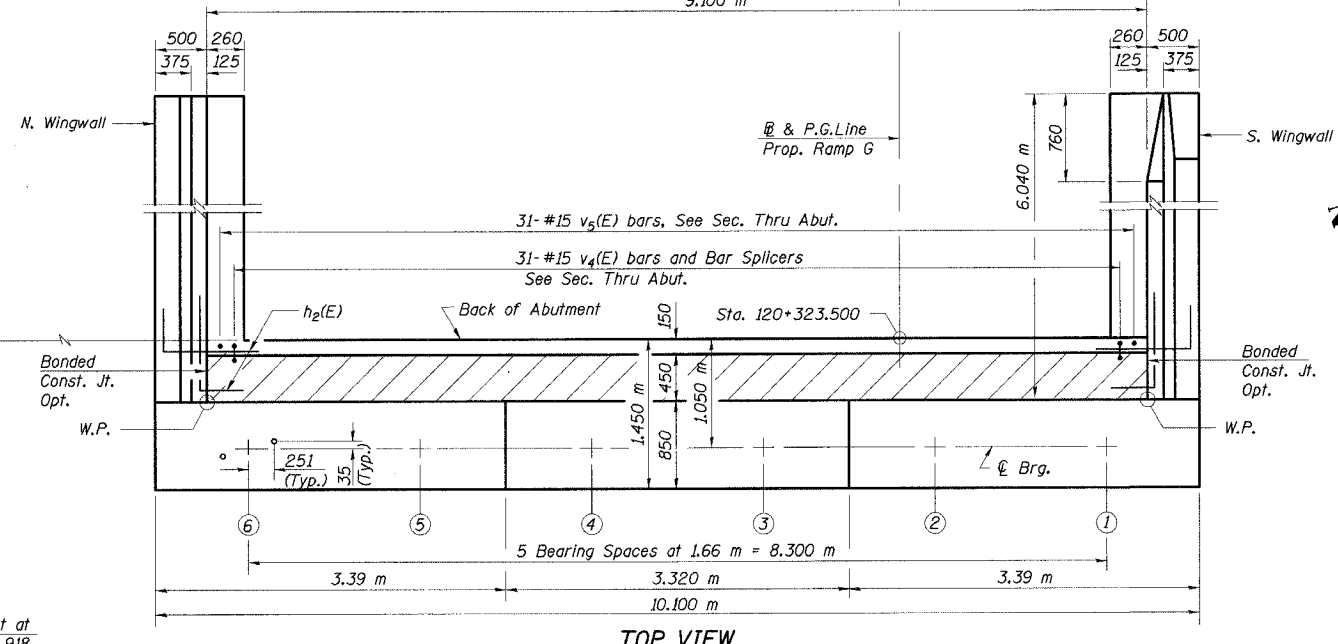
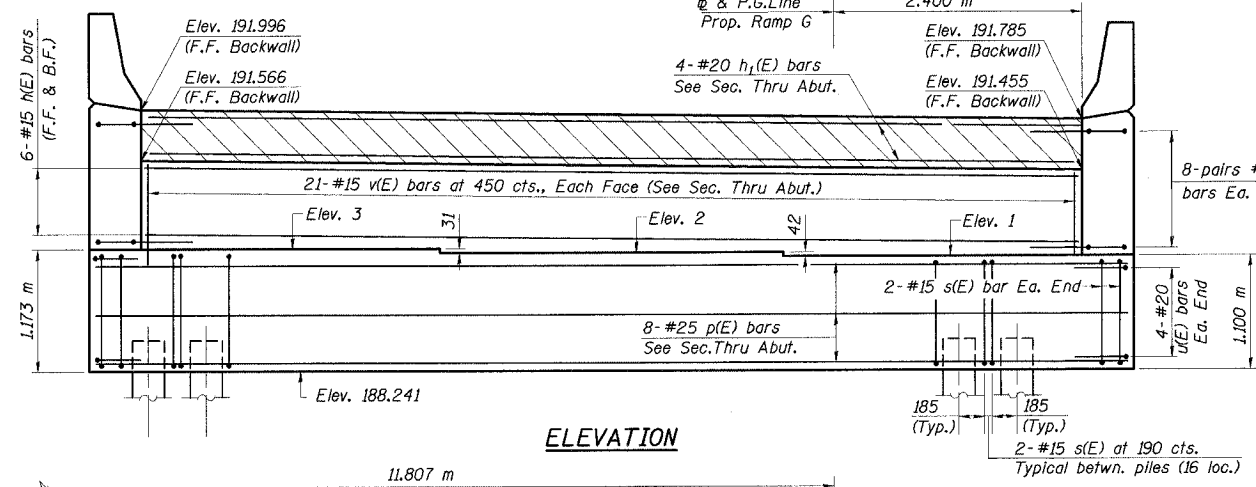
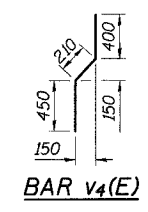
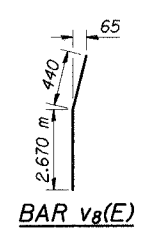
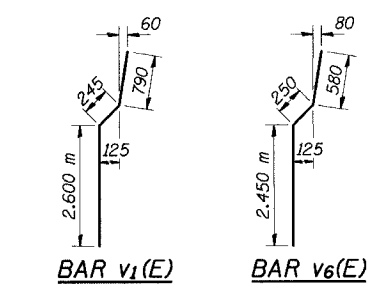
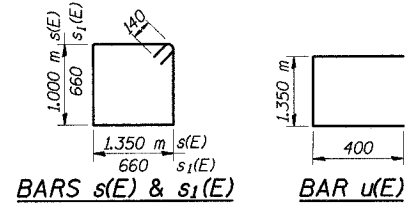
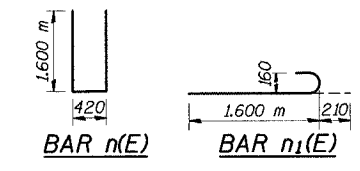
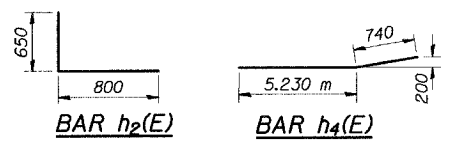
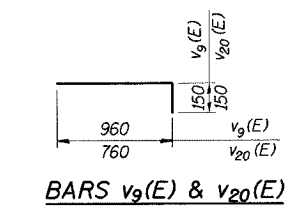
EAST ABUTMENT  
BILL OF MATERIAL

ABUTMENT SEAT ELEV.

	ELEV.
Elev. 1	189.341
Elev. 2	189.383
Elev. 3	189.414

Bar	No.	Size	Length(m)	Shape
h(E)	12	#15	9.000	
h <sub>1</sub> (E)	4	#20	9.000	
h <sub>2</sub> (E)	32	#15	1.450	
h <sub>3</sub> (E)	24	#15	5.940	
h <sub>4</sub> (E)	16	#15	5.970	
h <sub>5</sub> (E)	4	#15	2.400	
n(E)	39	#20	3.620	
n <sub>1</sub> (E)	6	#20	1.810	
p(E)	8	#25	10.000	
p <sub>1</sub> (E)	12	#25	6.770	
s(E)	36	#15	4.980	
s <sub>1</sub> (E)	38	#15	2.920	
u(E)	8	#20	2.150	
v(E)	42	#15	3.300	
v <sub>1</sub> (E)	21	#20	3.635	
v <sub>2</sub> (E)	21	#20	3.400	
v <sub>3</sub> (E)	31	#15	1.060	
v <sub>4</sub> (E)	31	#15	0.600	
v <sub>5</sub> (E)	18	#20	3.280	
v <sub>6</sub> (E)	21	#20	3.450	
v <sub>7</sub> (E)	3	#20	3.110	
v <sub>8</sub> (E)	8	#15	1.110	
v <sub>20</sub> (E)	8	#15	0.910	

ITEM	UNIT	QUANTITY
Structure Excavation	m <sup>3</sup>	169.2
Concrete Structures	m <sup>3</sup>	55.6
Reinforcement Bars, Epoxy Coated	kg	3230
Furnishing Steel Piles HP 310x79	m	440.0
Driving Steel Piles	m	440.0
Test Pile Steel HP 310x79	Each	1
Bar Splicers	Each	31
Porous Granular Embankment	m <sup>3</sup>	75.0



PILE DATA

Type: HP 310 x 79  
Capacity: 500 kN (Driven to 750 kN bearing)  
Est. Length: 22 m  
No. Required: 21 (Includes 1 Test Pile)  
Test Pile Driven to 1125 kN

- Notes:
- Work this sheet with Sheet 71 of 91.
  - Reinforcement bars designated (E) shall be epoxy coated.
  - All dimensions are in millimeters (mm) except as noted.
  - Min. bar laps (Unless otherwise shown):  
#15 bars - 640 mm  
#20 bars - 790 mm  
#25 bars - 1320 mm
  - Piles shall be driven in holes precored through the embankment, to Elev. 185.0, according to 512.10 (c) of the Standard Specifications
  - All piles shall be encased in concrete, see detail on Sheet 73 of 91.

DESIGNED	MEA
CHECKED	JJK
DRAWN	LK
CHECKED	JJK

J:\Research\EA\_34562\CADD\1\ACTR\_28\_2804\cds\eb150034e\_2804.dgn  
 28-MAR-2005 12:28

ILLINOIS DEPARTMENT OF TRANSPORTATION  
I-94/IL 394 SOUTH BOUND  
EAST ABUTMENT PLAN & ELEVATION  
WB I-80/94 TO SB IL 394 - RAMP G  
FAT 80/94 - FAP 332 SECTION 0203.1B  
COOK COUNTY  
STA. 120+796.063 STRUCTURE NO. 016-2804  
DATE 3/23/05  
SCALE ---

**HNTB**