

STATE OF ILLINOIS
DEPARTMENT OF TRANSPORTATION

ROUTE NO.	SECTION	COUNTY	TOTAL SHEETS	SHEET NO.	SHEET NO. 72 91 SHEETS
F. A. I. 80/94	0203.1B	COOK	200	134	
ILLINOIS FED. AID PROJECT - CONTRACT NO. 62854					

WEST ABUTMENT
BILL OF MATERIAL

Bar	No.	Size	Length(m)	Shape	
h ₁₂ (E)	12	#15	9.070	—	
h ₁₄ (E)	4	#20	9.070	—	
h ₁₆ (E)	32	#15	1.450	—	
h ₁₈ (E)	24	#15	6.800	—	
h ₂₀ (E)	16	#15	6.830	—	
h ₂₂ (E)	4	#15	2.400	—	
h ₂₄ (E)	42	#20	3.860	—	
h ₂₆ (E)	12	#20	1.930	—	
h ₂₈ (E)	3	#25	6.450	—	
h ₃₀ (E)	5	#25	10.070	—	
h ₃₂ (E)	3	#25	5.500	—	
h ₃₄ (E)	12	#25	3.050	—	
h ₃₆ (E)	3	#25	2.050	—	
h ₃₈ (E)	12	#25	7.630	—	
h ₄₀ (E)	12	#15	4.980	—	
h ₄₂ (E)	38	#15	2.920	—	
h ₄₄ (E)	12	#15	5.180	—	
h ₄₆ (E)	12	#15	5.380	—	
h ₄₈ (E)	8	#20	2.150	—	
h ₅₀ (E)	42	#15	3.300	—	
h ₅₂ (E)	20	#20	3.585	—	
h ₅₄ (E)	23	#20	3.470	—	
h ₅₆ (E)	3	#20	3.200	—	
h ₅₈ (E)	31	#15	1.060	—	
h ₆₀ (E)	31	#15	0.600	—	
h ₆₂ (E)	20	#20	3.330	—	
h ₆₄ (E)	23	#20	3.220	—	
h ₆₆ (E)	3	#20	3.160	—	
h ₆₈ (E)	8	#15	1.110	—	
h ₇₀ (E)	8	#15	0.910	—	
ITEM				UNIT	QUANTITY
Structure Excavation				m ³	180.9
Concrete Structures				m ³	56.9
Reinforcement Bars, Epoxy Coated				kg	3750
Furnishing Steel Piles HP 310x79				m	550
Driving Steel Piles				m	550
Test Pile Steel HP 310x79				Each	1
Bar Splicers				Each	31
Porous Granular Embankment				m ³	75.6

ABUTMENT SEAT ELEV.

ELEV.	
Elev. 1	196.690
Elev. 2	196.790
Elev. 3	196.890
Elev. 4	196.990
Elev. 5	197.090
Elev. 6	197.190

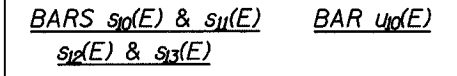
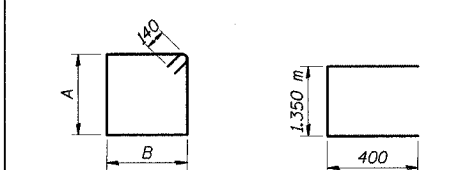
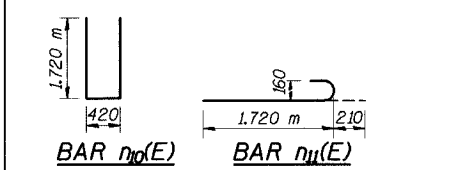
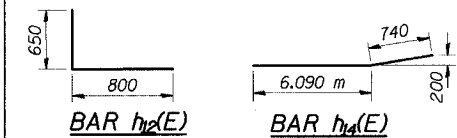
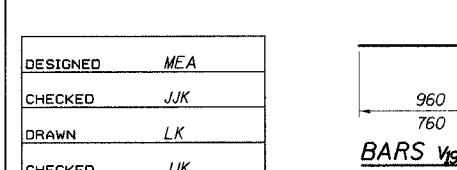
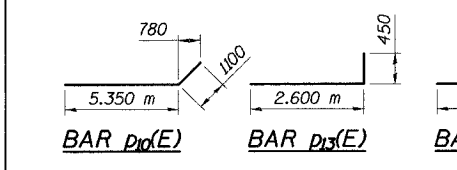
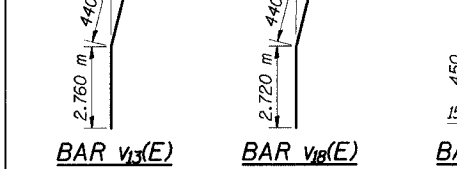
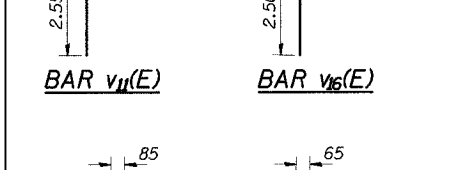
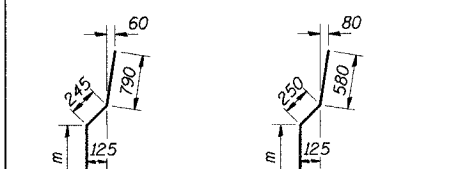
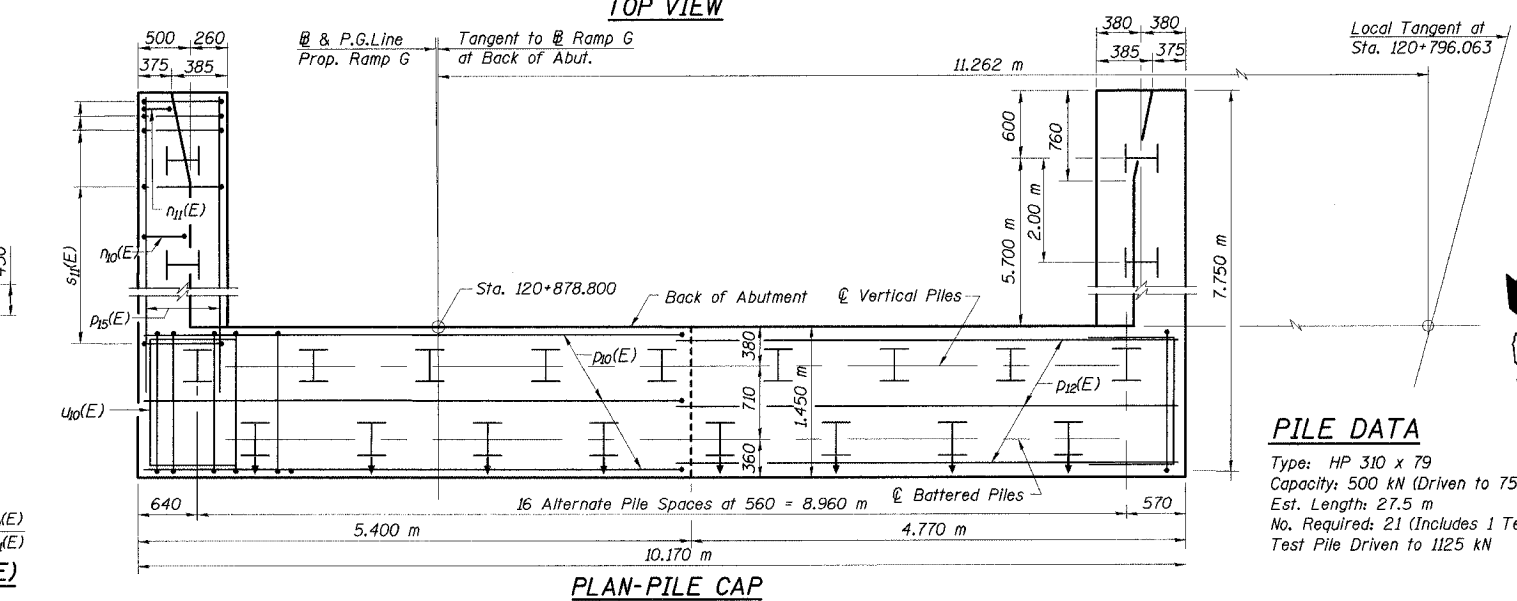
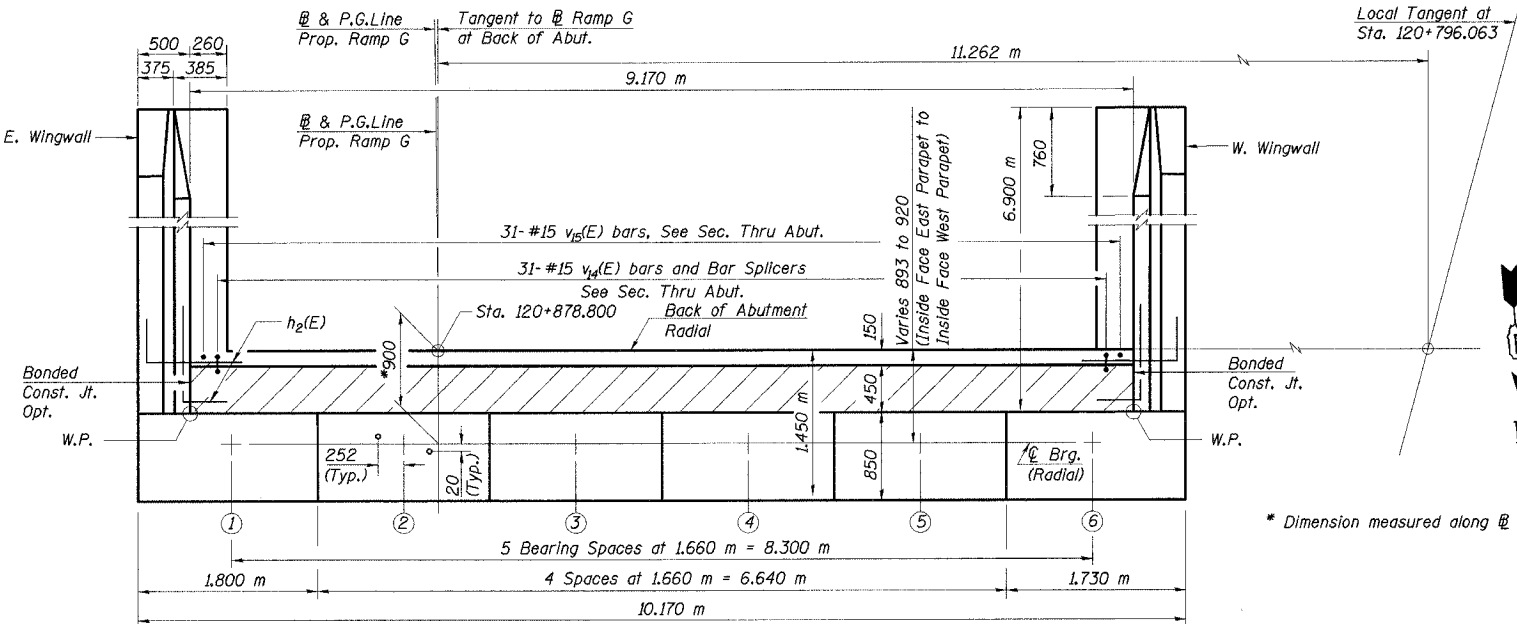
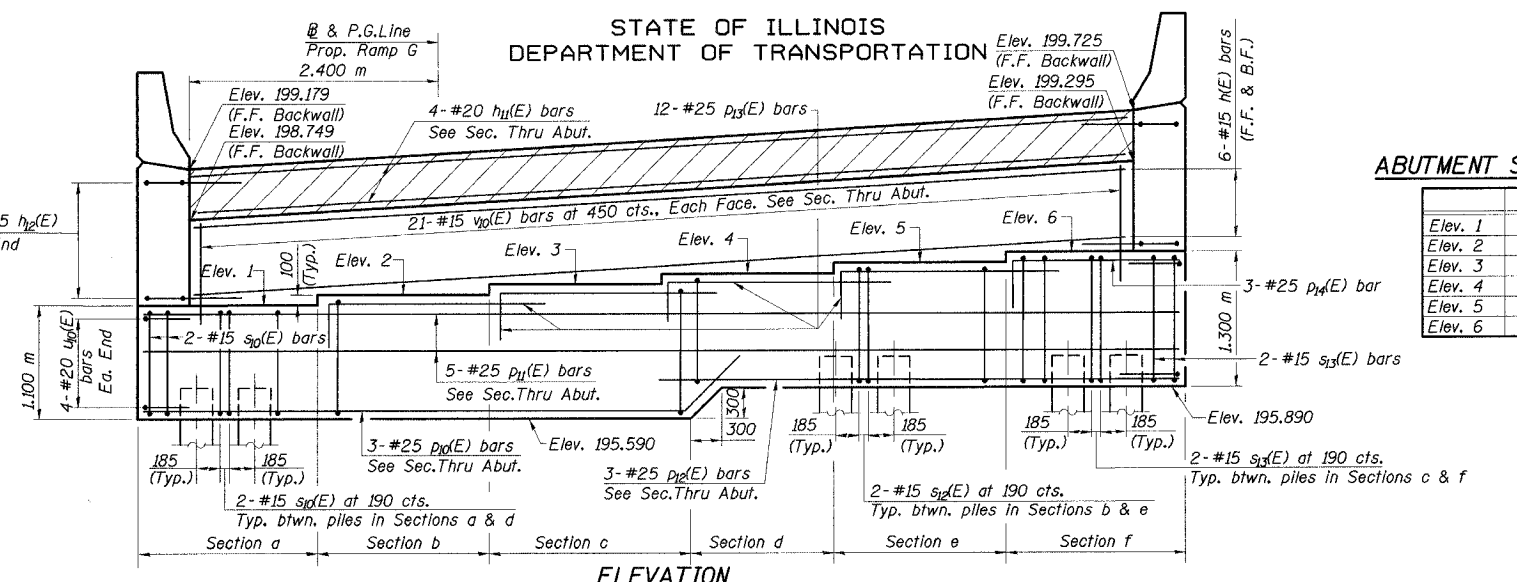


TABLE OF DIMENSIONS

Rebar	A	B
h ₂₀ (E)	1.000 m	1.350 m
h ₂₂ (E)	660	660
h ₂₄ (E)	1.100 m	1.350 m
h ₂₆ (E)	1.200 m	1.350 m



DESIGNED	MEA
CHECKED	JJK
DRAWN	LK
CHECKED	JJK



PILE DATA

Type: HP 310 x 79
Capacity: 500 kN (Driven to 750 kN bearing)
Est. Length: 27.5 m
No. Required: 21 (Includes 1 Test Pile)
Test Pile Driven to 1125 kN

Schedule Note:
West Abutment piles not to be installed before June 6, 2006 to allow for embankment settlement.

- Notes:
- Work this sheet with Sheet 73 of 91.
 - Reinforcement bars designated (E) shall be epoxy coated.
 - All dimensions are in millimeters (mm) except as noted.
 - Min. bar laps (Unless otherwise shown):
#15 bars - 640 mm
#20 bars - 790 mm
#25 bars - 1320 mm
 - All piles shall be encased in concrete, see detail on Sheet 73 of 91.

ILLINOIS DEPARTMENT OF TRANSPORTATION
1-94/IL 394 SOUTH BOUND
WEST ABUTMENT PLAN & ELEVATION
WB I-80/94 TO SB IL 394 - RAMP G
FAI 80/94 - FAP 332 SECTION 0203.1B
COOK COUNTY
STA. 120+796.063 STRUCTURE NO. 016-2804
DATE 3/23/05
SCALE ---

HNTB

J:\Beauchamp EA\34562\CADD\1\CTR_28_2804\cads\ab\150014e_2804.dgn
 28-MAR-2005 12:28