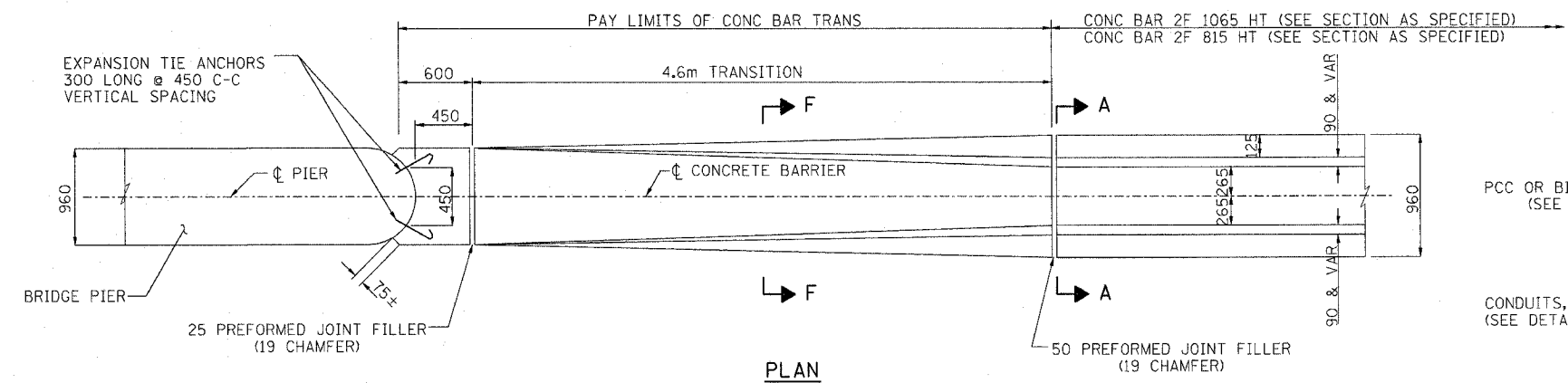
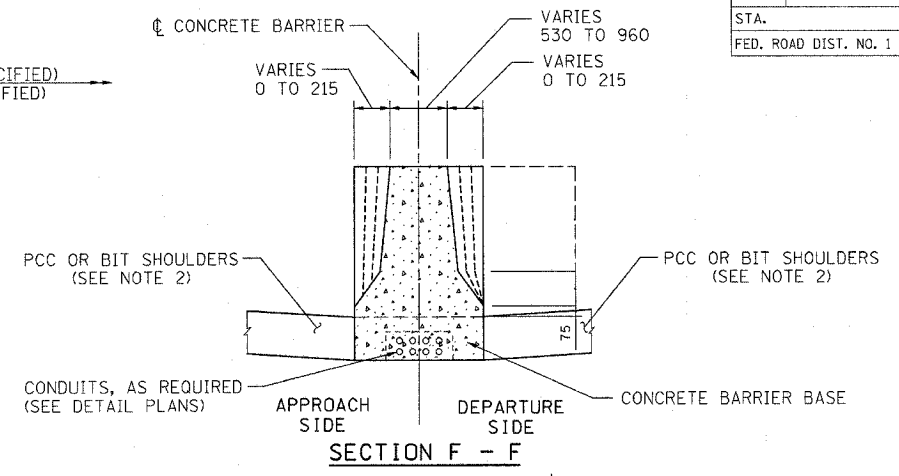


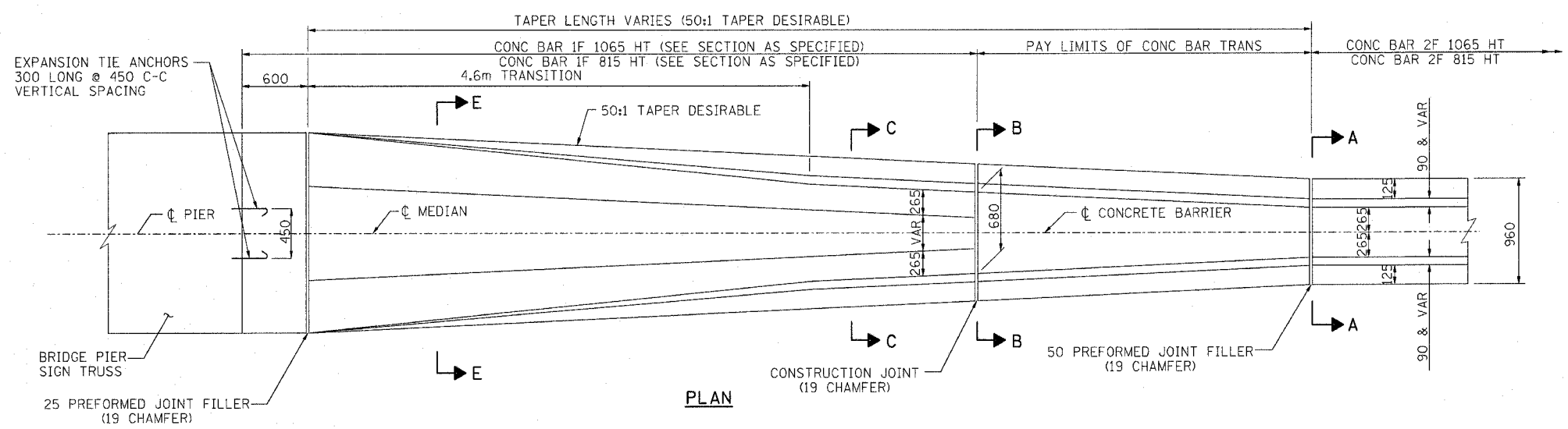
F.A.I. RTE.	SECTION	COUNTY	TOTAL SHEETS	SHEET NO.
80/94	0203.1B	COOK	200	165
STA.	TO STA.			
FED. ROAD DIST. NO. 1		ILLINOIS FED. AID PROJECT		CONTRACT #62854



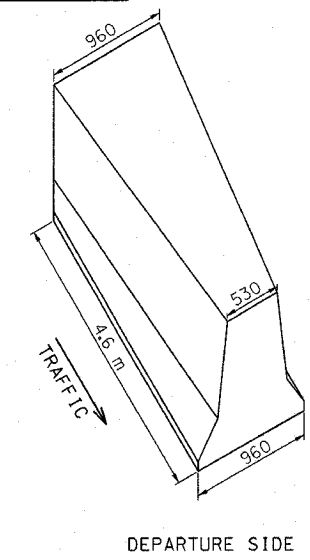
PLAN



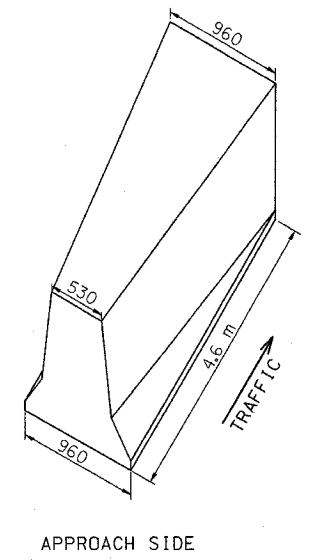
SECTION F - F



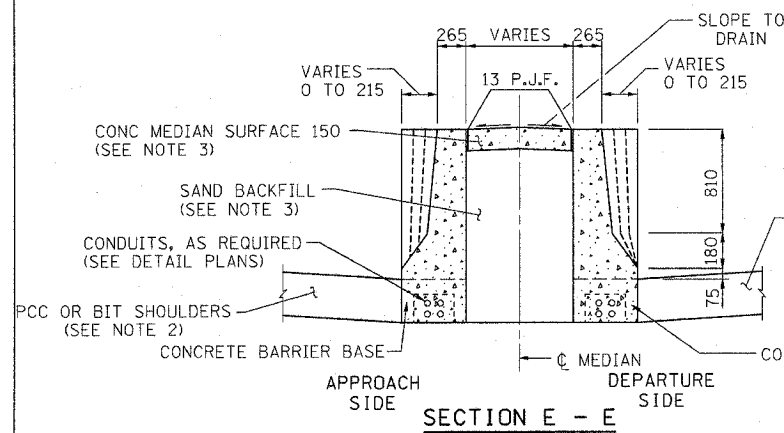
PLAN



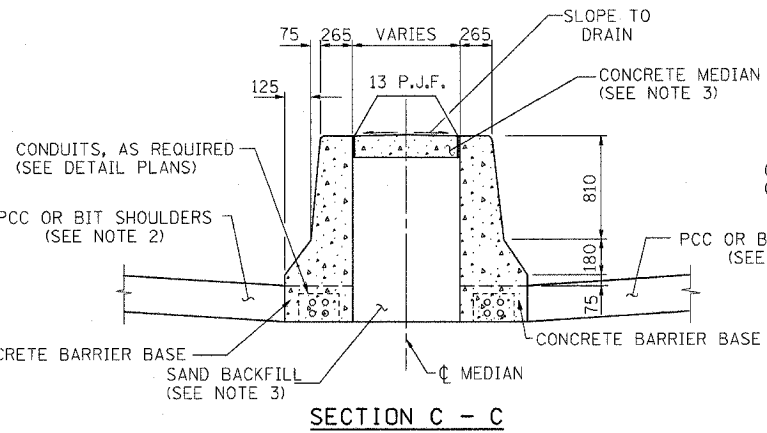
DEPARTURE SIDE



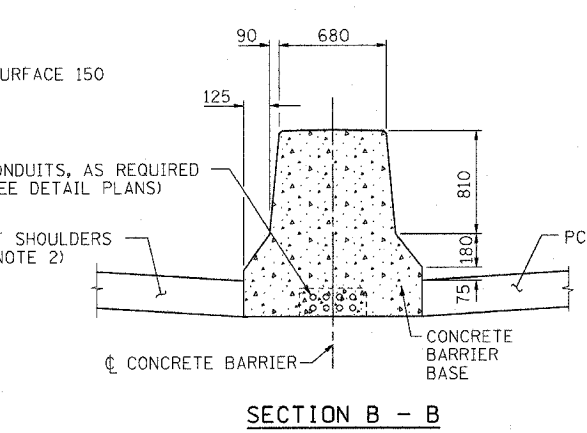
APPROACH SIDE



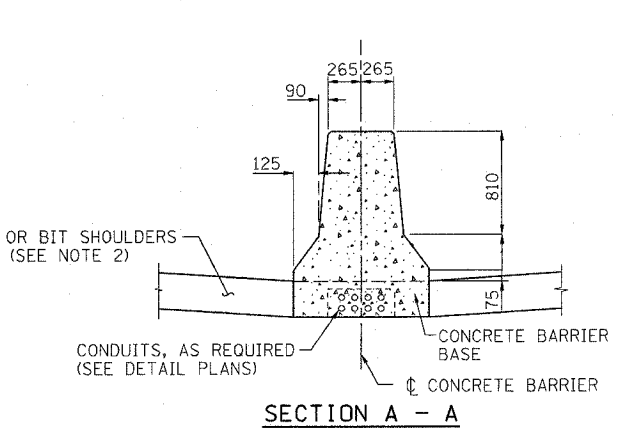
SECTION E - E



SECTION C - C



SECTION B - B



SECTION A - A

NOTES:

- FOR ADDITIONAL CONCRETE BARRIER DETAILS SEE CONCRETE BARRIER TYPICAL SECTIONS SHEET AND STANDARDS 637001 AND 637006.
- FOR ADDITIONAL SHOULDER DETAILS SEE TYPICAL SECTIONS, PIPE UNDERDRAIN & SHOULDER DETAILS SHEET AND STANDARDS 601001, 482006, 483001 & 482001.
- SAND BACKFILL AND CONCRETE MEDIAN SURFACE 150 WILL BE REQUIRED. FILLING WITH CONCRETE WILL NOT BE ALLOWED. THIS WORK SHALL BE PAID FOR SEPARATELY.

- FURNISHING AND INSTALLING THE PREFORMED JOINT FILLER OF THE SIZE SPECIFIED SHALL BE INCLUDED IN THE COST OF THE CONCRETE BARRIER OF THE TYPE INVOLVED.
- FURNISHING AND INSTALLING THE 19 EXPANSION TIE ANCHORS SHALL BE INCLUDED IN THE COST OF THE CONCRETE BARRIER OF THE TYPE INVOLVED.
- THE REMOVAL OF THE EXISTING CONCRETE END BLOCKS IF APPLICABLE SHALL BE INCLUDED IN THE COST OF THE CONCRETE BARRIER OF THE TYPE INVOLVED.

REVISIONS	
NAME	DATE
MDV	01/30/04
MRN	3/29/04

ILLINOIS DEPARTMENT OF TRANSPORTATION
F.A.I. ROUTE 80/94 (KINGERY EXPRESSWAY)

**CONCRETE BARRIER
DETAILS
SHEET 2 OF 2**

SCALE NONE
DATE 10/03

DRAWN BY ACE/CAD
CHECKED BY

AMERICAN
CONSULTING ENGINEERS