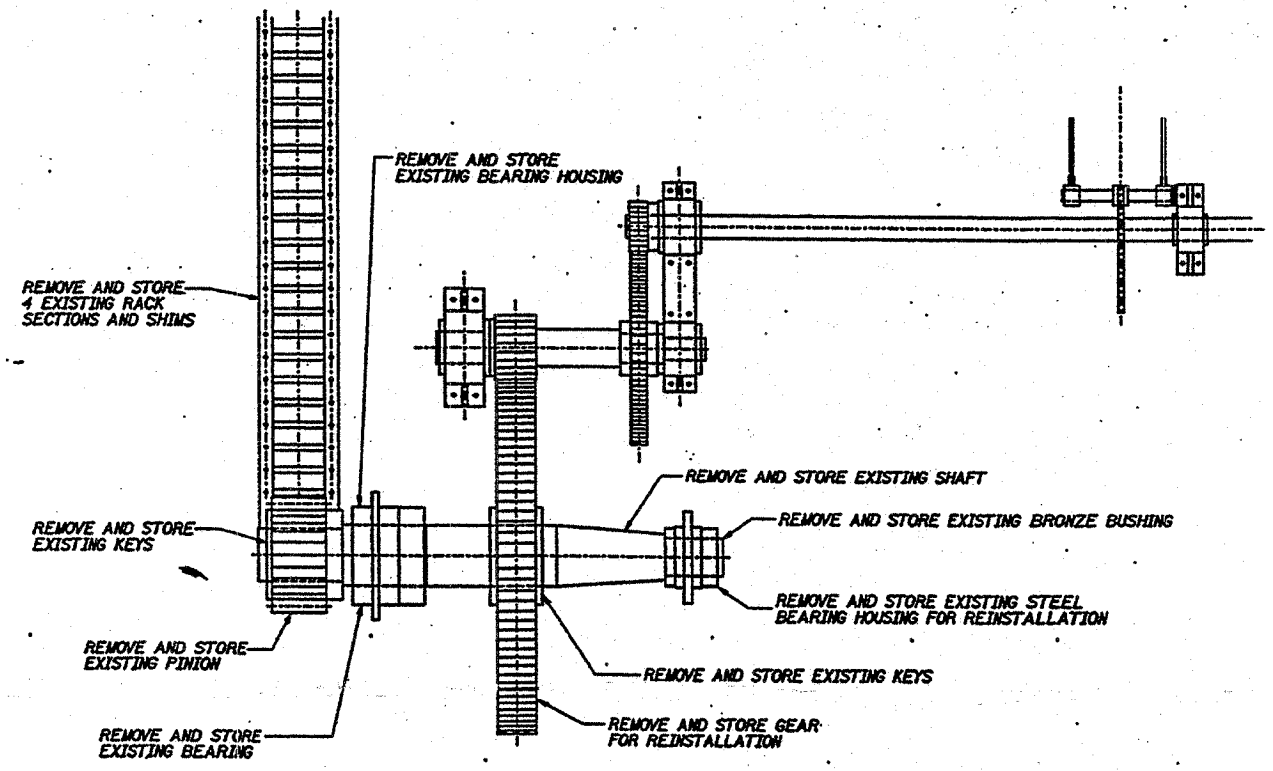


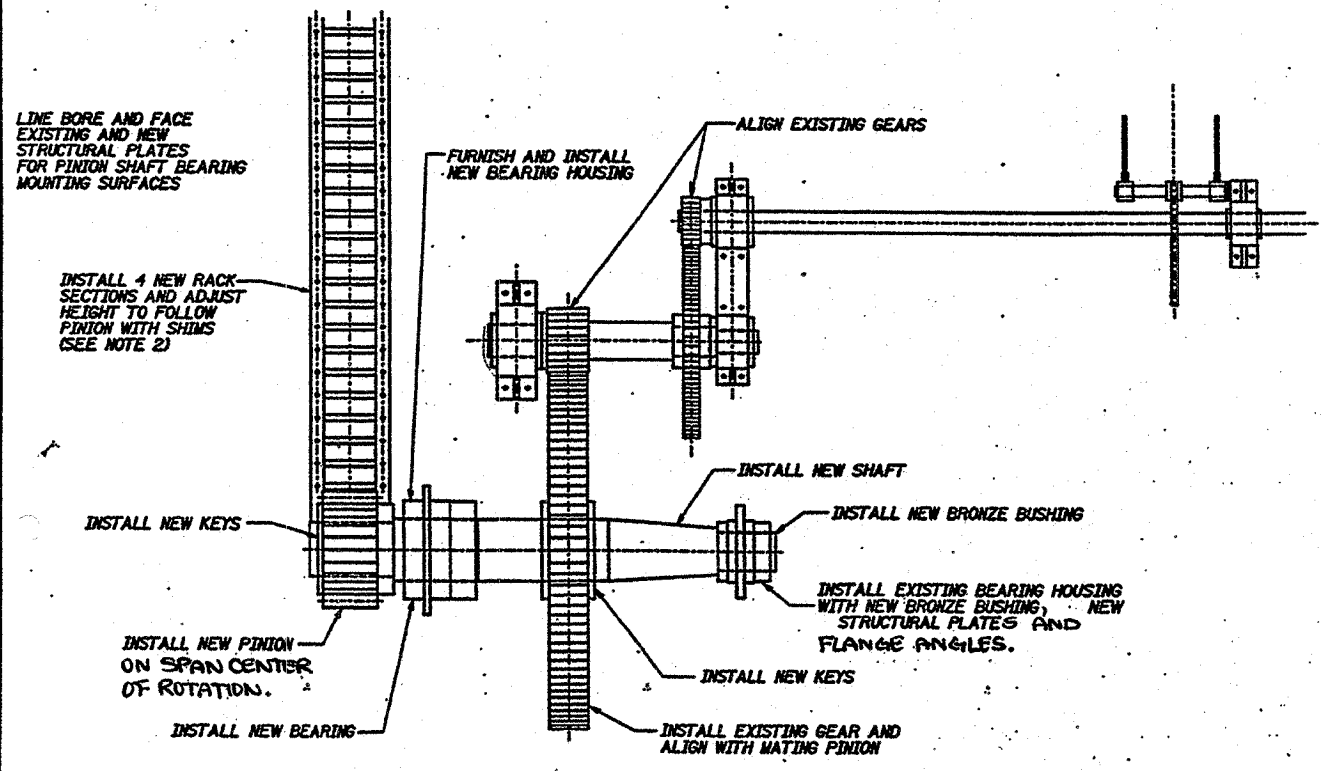
62859

ROUTE NO.	SECT.	COUNTY	SHEET NO.	TOTAL SHEETS
FAP 607	*	WILL	6	10
FED. ROAD DIST. NO.	ILLINOIS	FED. AID PROJECT		

* G-R-I-4



DEMOLITION PLAN
SCALE: 3/4" = 1'-0"



CONSTRUCTION PLAN
SCALE: 3/4" = 1'-0"

Designed by: ED
Checked by: JOK
Drafted by: SA
Checked by: ED

NOTES:

1. REMOVED RACK SECTIONS, PINION SHAFT, KEYS & BEARINGS ARE TO BE SALVAGED & DELIVERED TO IDOT AS DIRECTED BY THE ENGINEER.
2. REPLACE EXISTING RACKS WITH NEW RACK OF SAME LENGTH. MATCH SHIM LENGTH TO RACKS.

REVISION	DATE	DESCRIPTION
STATE OF ILLINOIS DEPARTMENT OF TRANSPORTATION		
MACHINERY PLAN		
CASS STREET BRIDGE OVER DESPLAINES RIVER U.S. 30 (WESTBOUND) CITY OF JULIET, WILL COUNTY STRUCTURE NUMBER 099-0101		
DRAWING NO. C-04	SCALE	DATE 2-05-2001
		SHEET NO. 4 OF 7