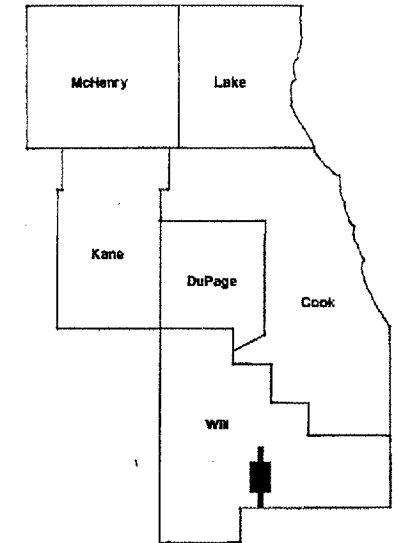


ROUTE	SECTION	COUNTY	TOTAL SHEETS	SHEET NUMBER
FAP 330	2004-130I	WILL	14	1

STATE OF ILLINOIS
DEPARTMENT OF TRANSPORTATION
DIVISION OF HIGHWAYS
DISTRICT ONE
PROPOSED HIGHWAY PLANS

CONTRACT: 62900

D-91-100-05



LOCATION OF IMPROVEMENTS INDICATED THUS:

FOR INDEX OF SHEETS SEE SHEET 2

IMPROVEMENTS ARE
LOCATED IN GREEN
GARDEN TOWNSHIP

- FAP 330: US 45
- 1) OVER NORTH BRANCH PRAIRIE CREEK,
(SN: 099-0118)
 - 2) OVER PRAIRIE CREEK, (SN: 099-0119)

SECTION 2004-130I
P.P.C. DECK BEAM REPLACEMENT
WILL COUNTY
C-91-100-05

TRAFFIC DATA

LOCATION 1 (SN 099-0118)

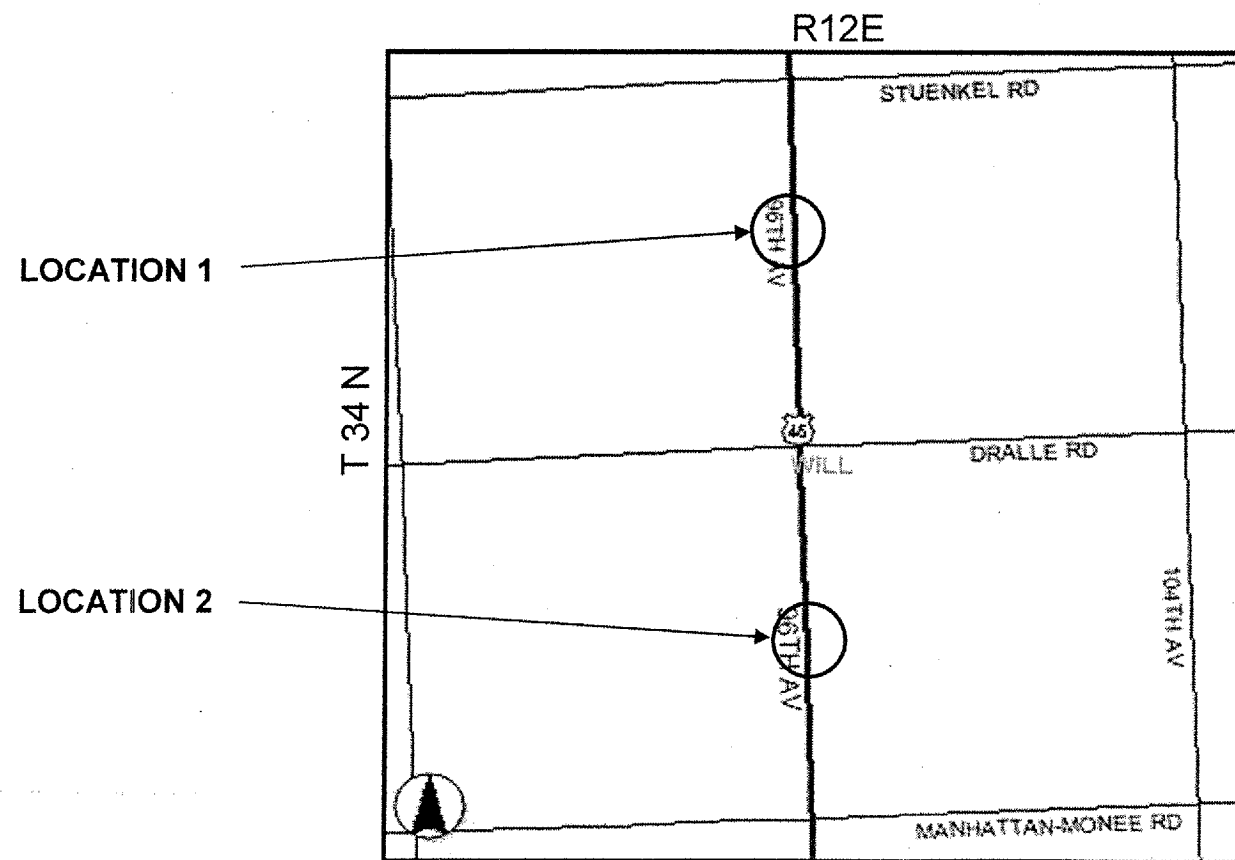
2003 ADT = 6,100

SPEED LIMIT = 55 MPH

LOCATION 2 (SN 099-0119)

2003 ADT = 6,100

SPEED LIMIT = 55 MPH



CONTRACT NO. 62900

STATE OF ILLINOIS
DEPARTMENT OF TRANSPORTATION
DIVISION OF HIGHWAYS

SUBMITTED: March 31, 2005

Diane O'Keefe

DEPUTY DIRECTOR OF HIGHWAY, REGION ENGINEER

May 13, 2005

Mike Hine

ENGINEER OF DESIGN AND ENVIRONMENT

May 13, 2005

Victor Mader

DIRECTOR, DIVISION OF HIGHWAYS

PRINTED BY THE AUTHORITY
OF THE STATE OF ILLINOIS

J.U.L.I.E.: JOINT UTILITY LOCATION
 INFORMATION FOR EXCAVATION
 (800) 892-0123

DISTRICT ONE BUREAU OF DESIGN
PLAN PREPARATION ENGINEER: KEN ENG / R. BORO (847)-705-4178

ROUTE	SECTION	COUNTY	TOTAL SHEETS	SHEET NUMBER
FAP 330	2004-130I	WILL	14	2

INDEX OF SHEETS

CONTRACT: 62900

GENERAL NOTES

- 1 TITLE SHEET
- 2 INDEX OF SHEETS, STATE STANDARDS AND GENERAL NOTES
- 3-4 SUMMARY OF QUANTITIES
- 5 TRAFFIC STAGING PLANS, LOCATION 1, SN 099-0118
- 6 TRAFFIC STAGING PLANS, LOCATION 2, SN 099-0119
- 7-10 BRIDGE REPAIR PLANS, LOCATION 1, SN 099-0118
- 11-13 BRIDGE REPAIR PLANS, LOCATION 2, SN 099-0118
- 14 TRAFFIC CONTROL AND PROTECTION FOR SIDE ROADS, INTERSECTIONS & DRIVEWAYS

BEFORE STARTING ANY EXCAVATION, THE CONTRACTOR SHALL CALL "J.U.L.I.E." AT (800) 892-0123 FOR FIELD LOCATIONS OF BURIED ELECTRIC, TELEPHONE AND GAS UTILITIES. (48 HOUR NOTIFICATION IS REQUIRED).

THE CONTRACTOR WILL NOT BE ALLOWED TO SET UP A YARD OR FIELD OFFICE ON STATE PROPERTY WITHOUT WRITTEN PERMISSION FROM THE DEPARTMENT.

BEFORE BEGINNING ANY WORK, THE CONTRACTOR SHALL RETAIN AND RECORD (FOR FUTURE REFERENCES), ALL EXISTING PAVEMENT MARKING LINES AND RAISED REFLECTIVE PAVEMENT MARKERS IN ORDER THAT THESE LOCATIONS CAN BE RE-ESTABLISHED FOR STRIPING. EXACT LOCATIONS OF ALL STRIPING SHALL BE AS DIRECTED BY THE ENGINEER.

ALL DAMAGE TO EXISTING PAVEMENT MARKINGS OR RAISED REFLECTIVE PAVEMENT MARKERS OUTSIDE THE CONCRETE REMOVAL LINE SHOWN ON THE PLANS SHALL BE REPLACED AT THE CONTRACTOR'S EXPENSE.

THE CONTRACTOR SHALL CONTACT THE DISTRICT ONE TRAFFIC CONTROL SUPERVISOR AT (847) 705-4470 A MINIMUM OF 72 HOURS IN ADVANCE OF BEGINNING WORK.

THE CONTRACTOR SHALL CONTACT MS. DEBBIE HANLON, TRAFFIC FIELD ENGINEER AT (847) 438-2300, TWO (2) WEEKS PRIOR TO PLACEMENT OF PERMANENT PAVEMENT MARKINGS.

THESE PLANS HAVE BEEN PREPARED FROM NOTES RECEIVED FROM DISTRICT BRIDGE INSPECTORS.

THE THICKNESS OF THE BITUMINOUS MIXTURE SHOWN ON THE PLANS IS THE NOMINAL THICKNESS. DEVIATIONS FROM THE NOMINAL THICKNESS WILL BE PERMITTED WHEN SUCH DEVIATIONS OCCUR DUE TO IRREGULARITIES IN THE EXISTING SURFACE OR BASE ON WHICH THE BITUMINOUS MIXTURE IS PLACED.

THE CONTRACTOR SHALL BE REQUIRED TO PROVIDE ACCESS TO ABUTTING PROPERTY AT ALL TIMES DURING THE CONSTRUCTION OF THIS PROJECT.

DO NOT SCALE PLANS FOR CONSTRUCTION DIMENSIONS.

CONCRETE SUPERSTRUCTURE SHALL HAVE A SEVEN (7) DAY MINIMUM CURE TIME.

STATE STANDARDS

- 701301-02 LANE CLOSURE, 2L, 2W, SHORT TIME OPERATIONS
- 701321-08 LANE CLOSURE, 2L, 2W, BRIDGE REPAIR WITH BARRIER
- 702001-05 TRAFFIC CONTROL DEVICES
- 704001-02 TEMPORARY CONCRETE BARRIER

BITUMINOUS MIXTURE REQUIREMENTS

MIXTURE	AC TYPE	MAX RAP (%)	AIR VOIDS
BIT. CONC. SURFACE CSE. SUPERPAVE, MIX "D" N50	PG 64-22	15%	4% @ 50 GTR.

*THE UNIT WEIGHT USED TO CALCULATE ALL BITUMINOUS SURFACE MIXTURE QUANTITIES IS 112 Lbs/SqYd/in.
NO VIBRATORY ROLLERS ALLOWED ON BRIDGE DECK

ILLINOIS DEPARTMENT OF TRANSPORTATION

INDEX OF SHEETS
STATE STANDARDS
GENERAL NOTES

ROUTE	SECTION	COUNTY	TOTAL SHEETS	SHEET NUMBER
FAP 330	2004-130I	WILL	14	3

CONTRACT: 62900

LOCATION OF WORK: 1) US 45 OVER NORTH BRANCH PRAIRIE CREEK, SN 099-0118
2) US 45 OVER PRAIRIE CREEK, SN 099-0119

SUMMARY OF QUANTITIES			CONSTRUCTION TYPE CODE		
CODE NO.	DESCRIPTION	UNIT	TOTAL QUANTITIES	SFTY -2A	
				Loc. 1: SN 099-0118	Loc. 2: SN 099-0119
44001000	BITUMINOUS CONCRETE SURFACE REMOVAL	SQ YD	91.9	83.6	8.3
50102400	CONCRETE REMOVAL	CU YD	13.7	5.2	8.5
50300100	FLOOR DRAINS	EACH	6		6
50300255	CONCRETE SUPERSTRUCTURE	CU YD	13.7	5.2	8.5
50300300	PROTECTIVE COAT	SQ YD	33.7	19.5	14.2
50400405	PRECAST PRESTRESSED CONCRETE DECK BEAMS (21" DEPTH)	SQ FT	2070	1065	1005
50800205	REINFORCEMENT BARS, EPOXY COATED	POUND	2190	830	1360
58100200	WATERPROOFING MEMBRANE SYSTEM	SQ YD	303.5	193.5	110
58300100	PORTLAND CEMENT MORTAR FAIRING COURSE	FOOT	867	494	373
67000400	ENGINEER'S FIELD OFFICE, TYPE A	CAL MO	4	2	2
67100100	MOBILIZATION	L SUM	1	0.5	0.5
70100405	TRAFFIC CONTROL AND PROTECTION, STANDARD 701321	EACH	2	1	1
70400100	TEMPORARY CONCRETE BARRIER	FOOT	360	180	180
70400200	RELOCATE TEMPORARY CONCRETE BARRIER	FOOT	360	180	180
89000100	TEMPORARY TRAFFIC SIGNAL INSTALLATION	EACH	2	1	1

ILLINOIS DEPARTMENT OF TRANSPORTATION

SUMMARY OF QUANTITIES
(SHEET 1 OF 2)

REV.

ROUTE	SECTION	COUNTY	TOTAL SHEETS	SHEET NUMBER
FAP 330	2004-130I	WILL	14	4

CONTRACT: 62900

LOCATION OF WORK: 1) US 45 OVER NORTH BRANCH PRAIRIE CREEK, SN 099-0118
2) US 45 OVER PRAIRIE CREEK, SN 099-0119

SUMMARY OF QUANTITIES

CONSTRUCTION TYPE CODE

CODE NO.	DESCRIPTION	UNIT	TOTAL QUANTITIES	SFTY -2A	
				Loc. 1: SN 099-0118	Loc. 2: SN 099-0119
X0320047	REMOVAL OF EXISTING PRECAST PRESTRESSED CONCRETE DECK BEAMS	SQ FT	2084	1076	1008
X0322467	TEMPORARY INFORMATION SIGNING FOR LANE CLOSURE	SQ FT	96	48	48
X4066424	BITUMINOUS CONCRETE SURFACE COURSE, SUPERPAVE MIX "D" N50	TON	34.2	21.8	12.4
Δ Z0030240	IMPACT ATTENUATORS, TEMPORARY (NON-REDIRECTIVE), TEST LEVEL 2	EACH	4	2	2
Δ Z0030340	IMPACT ATTENUATORS, RELOCATE (NON-REDIRECTIVE), TEST LEVEL 2	EACH	4	2	2

Δ SFTY-3N

ILLINOIS DEPARTMENT OF TRANSPORTATION

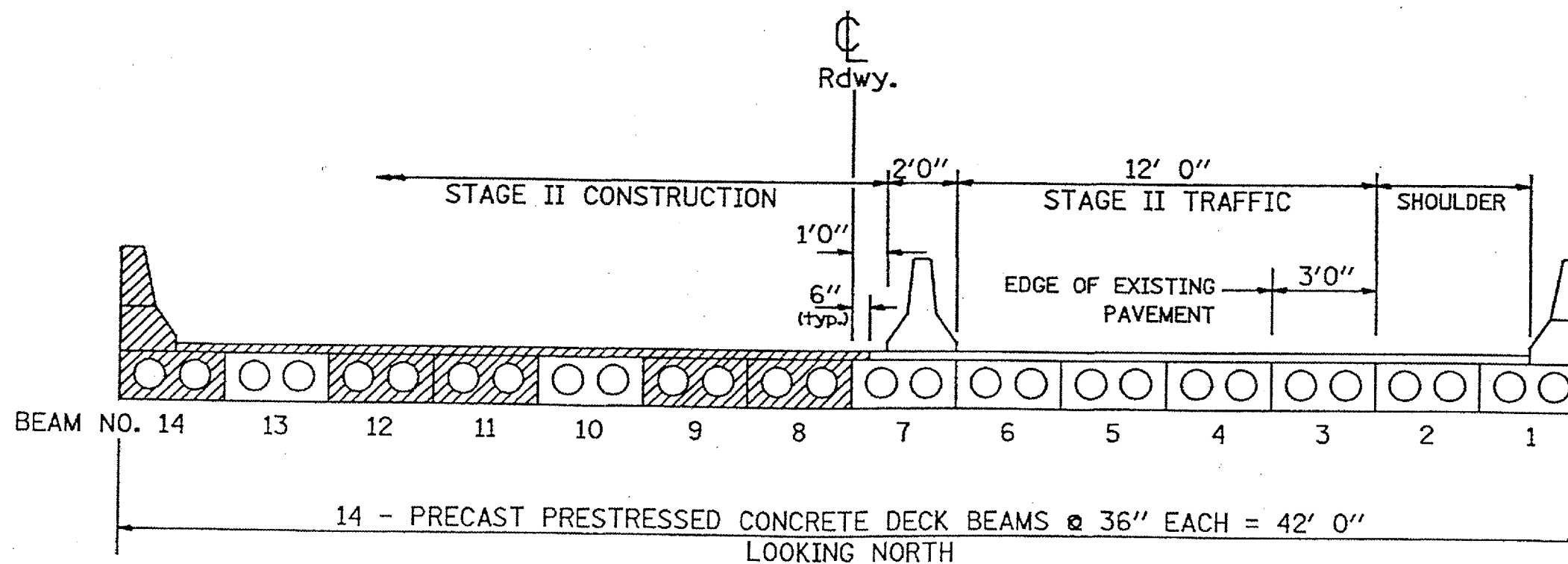
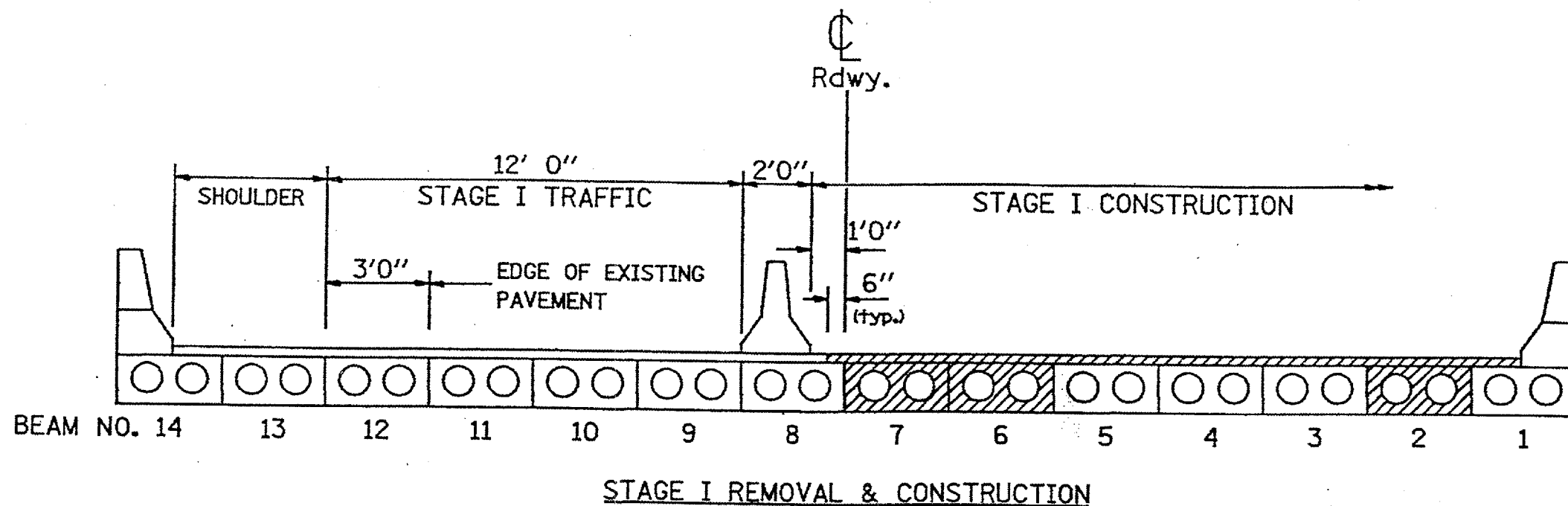
SUMMARY OF QUANTITIES
(SHEET 2 OF 2)

ROUTE	SECTION	COUNTY	TOTAL SHEETS	SHEET NUMBER
FAP 330	2004-1301	WILL	13	5

CONTRACT: 62900

NOTE:

Shoulders shall be brought to grade before they are used for traffic. This work shall be paid for by the contract unit price for, "Bituminous Concrete Surface Course, Superpave Mix "D" N50.



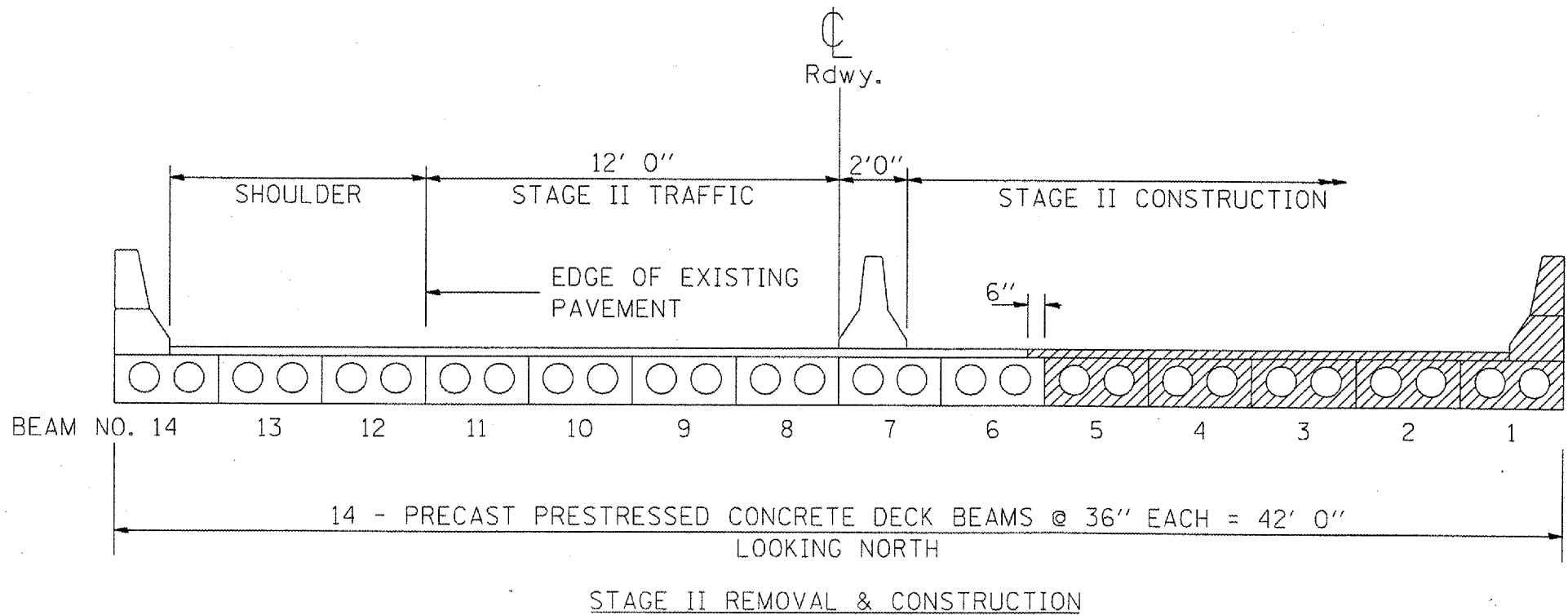
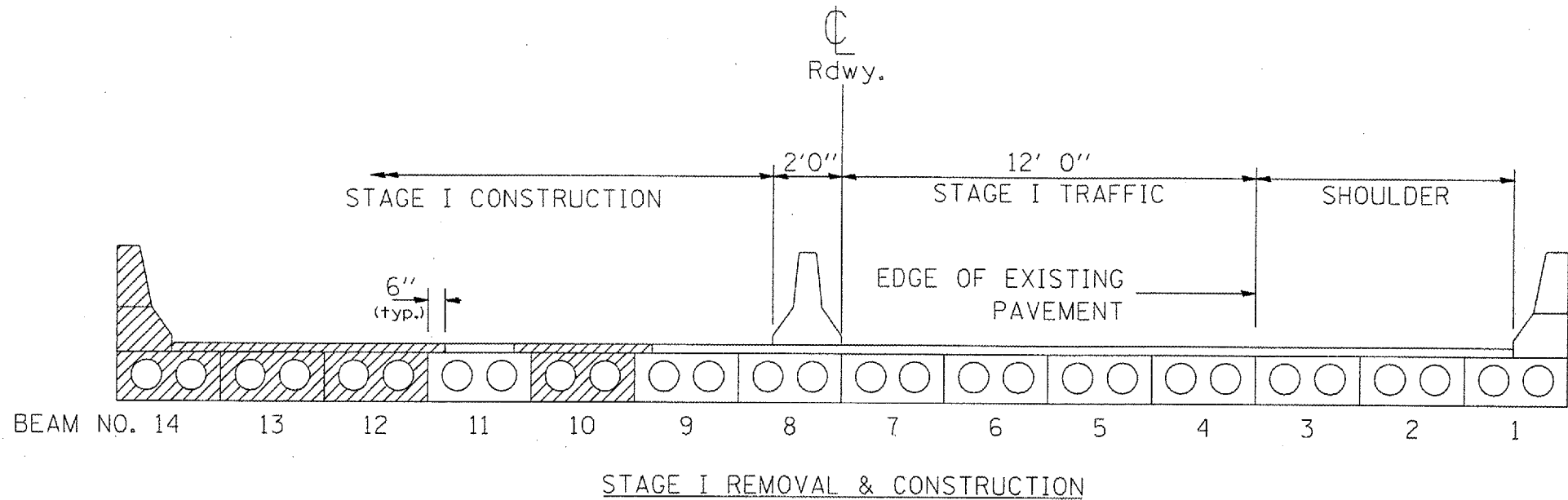
STAGE II REMOVAL & CONSTRUCTION

ILLINOIS DEPARTMENT OF TRANSPORTATION
TRAFFIC STAGING PLANS
TYPICAL SECTIONS

US 45 OVER NORTH BRANCH PRAIRIE CREEK
SN 099-0118

ROUTE	SECTION	COUNTY	TOTAL SHEETS	SHEET NUMBER
FAP 330	2004-130I	WILL	14	6

CONTRACT: 62900



ILLINOIS DEPARTMENT OF TRANSPORTATION
 TRAFFIC STAGING PLANS
 TYPICAL SECTIONS

US 45 OVER PRAIRIE CREEK
 SN 099-0119

STATE OF ILLINOIS
DEPARTMENT OF TRANSPORTATION

ROUTE NO.	SECTION	COUNTY	SHEET	SHEET NO. 1
		Will	14 7	3 SHEETS
FED. RD. DIST. NO. 7	ILLINOIS	FED. AID PROJECT		

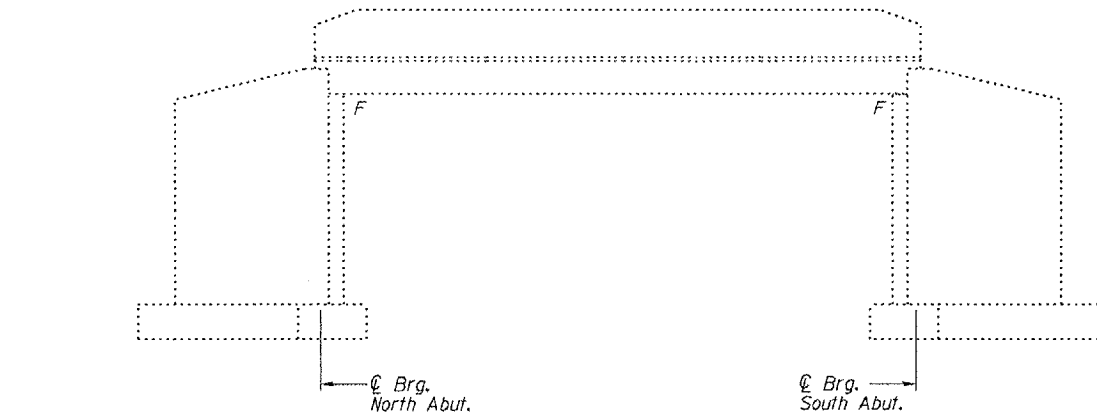
62900

GENERAL NOTES

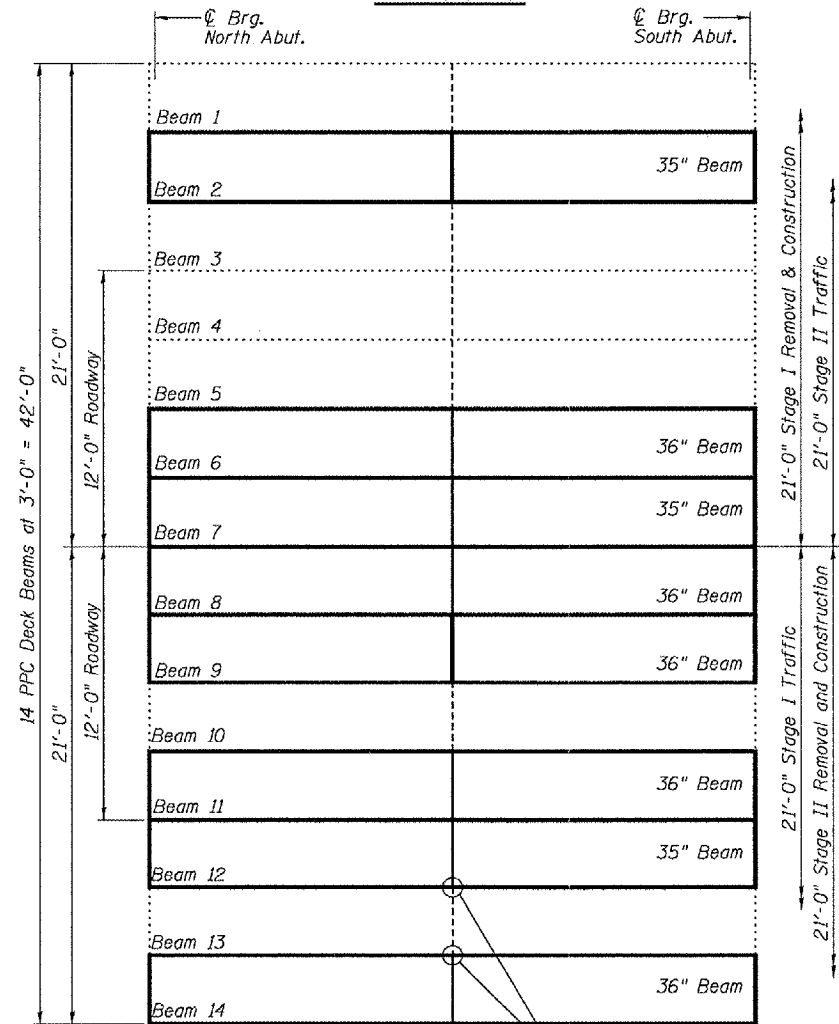
Plan dimensions and details relative to existing structure have been taken from existing plans and are subject to nominal construction variations. It shall be the Contractor's responsibility to verify such dimensions and details in the field and make necessary approved adjustments prior to construction or ordering of materials. Such variations shall not be cause for additional compensation for a change in the scope of the work, however, the Contractor will be paid for the quantity actually furnished at the unit price bid for the work.

Any damage done to the bridge during beam removal shall be repaired by the Contractor. Cost to be included in the cost of "Removal of Existing P.P.C. Deck Beams".
Reinforcement bars shall conform to the requirements of AASHTO M-31 or M322 Grade 60.

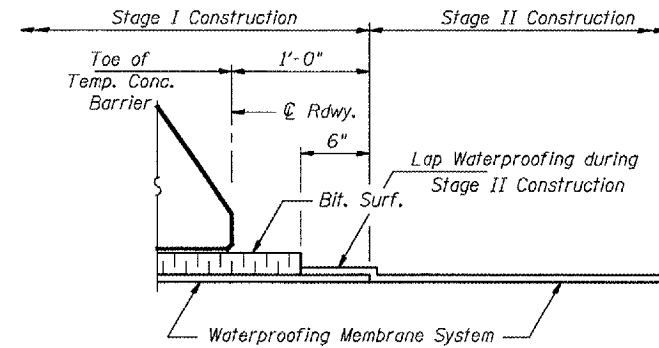
The top surface of the beams shall be finished in accordance with Article 504.06 of the Standard Specifications except that the surface shall not be roughened by brooming. The finished surface shall be free of depressions or high spots with sharp corners, and the top edge of keys shall be rounded or chamfered a minimum of 1/4".
Temporary concrete barrier shall only be anchored into the overlay and not the PPC Deck Beams.



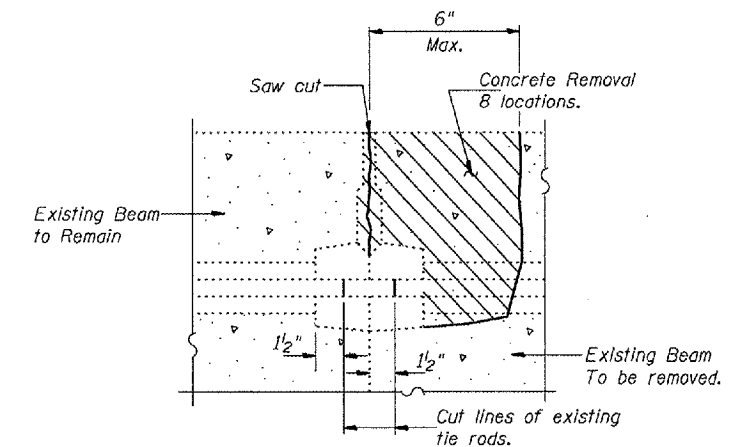
ELEVATION



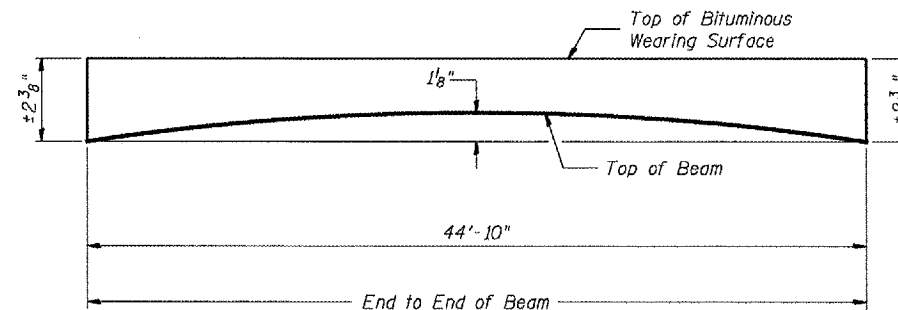
PLAN



WATERPROOFING TREATMENT AT STAGE CONSTRUCTION



BEAM REMOVAL DETAIL AT TRANSVERSE TIES



ANTICIPATED INITIAL CAMBER DIAGRAM

TOTAL BILL OF MATERIAL

ITEM	UNIT	QUANTITY
Precast Prestressed Concrete Deck Beams (21" Depth)	Sq. Ft.	1065
Bituminous Concrete Surface Removal	Sq. Yd.	83.6
Removal of Existing PPC Deck Beams	Sq. Ft.	1076
Bituminous Concrete Surface Course, Superpave Mix "D" N50	Tons	21.8
PC Mortar Fairing Course	Foot	494
Reinforcement Bars, Epoxy Coated	Pound	830
Waterproofing Membrane System	Sq. Yd.	193.5
Concrete Superstructure	Cu. Yd.	5.2
Concrete Removal	Cu. Yd.	5.2
Protective Coat	Sq. Yd.	19.5

* Includes only bituminous on beams to remain.

DESIGN STRESSES

FIELD UNITS

f'c = 3,500 psi
f'y = 60,000 psi

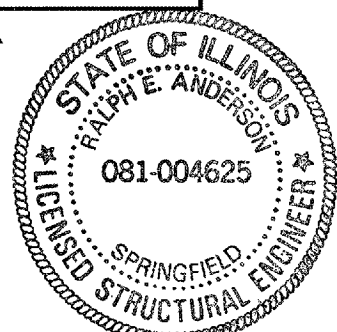
DESIGN STRESSES

PRESTRESS UNITS

f'c = 5,000 psi
f'ci = 4,000 psi
f's = 270,000 psi (1/2" Low Relaxation Strands)
f'si = 201,960 psi (1/2" Low Relaxation Strands)

DESIGNED	Walter H. Veltz
CHECKED	Ralph E. Anderson
DRAWN	UHV
CHECKED	UHV

May 8, 2005
EXAMINED John A. Morris
PASSED Ralph E. Anderson

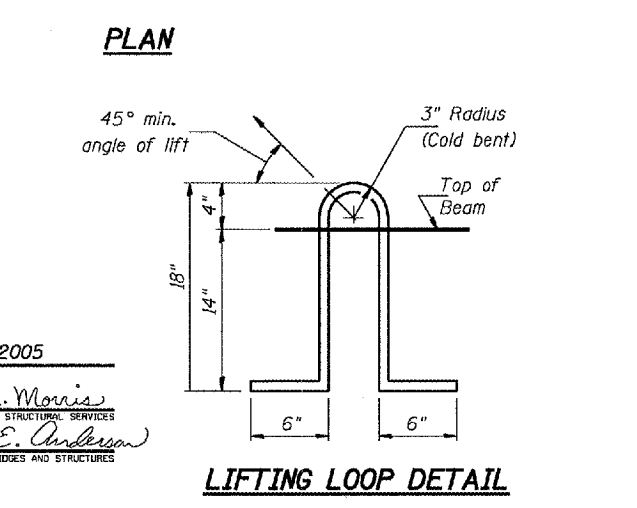
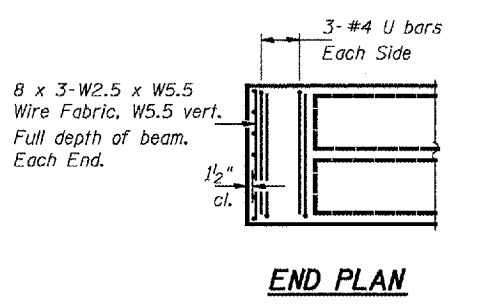
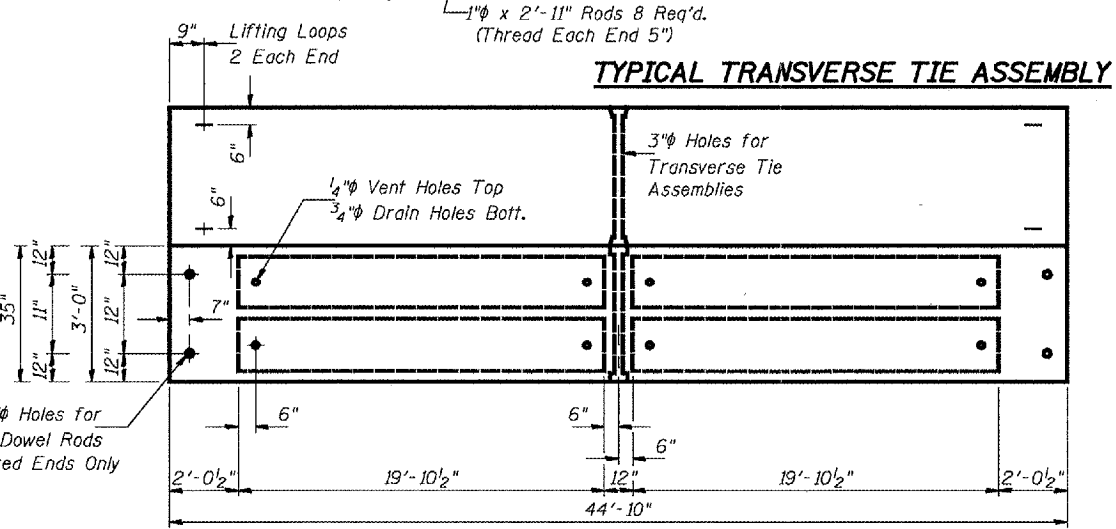
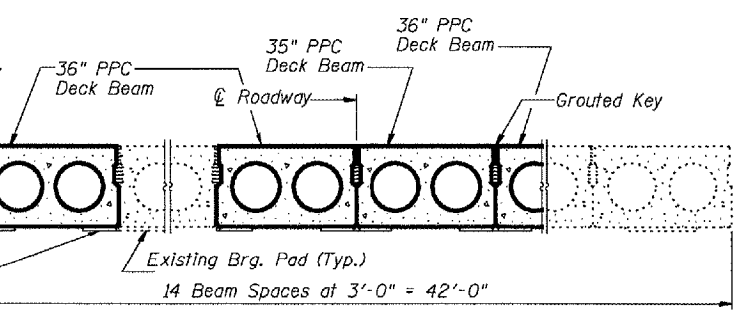
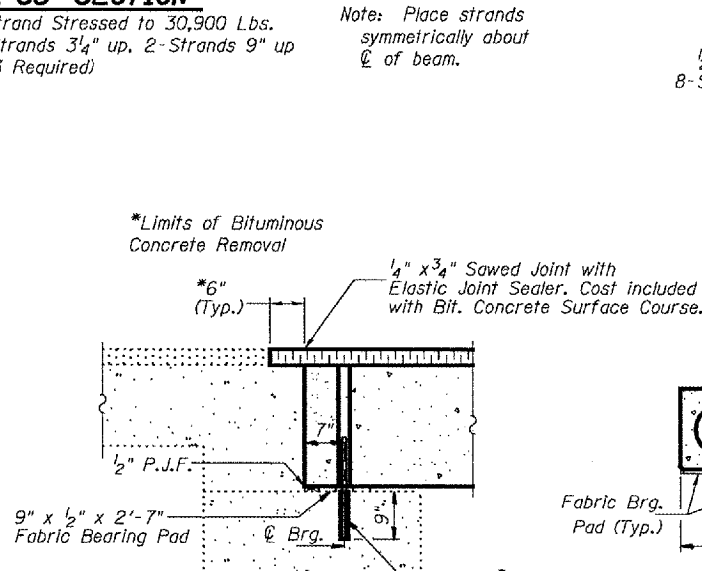
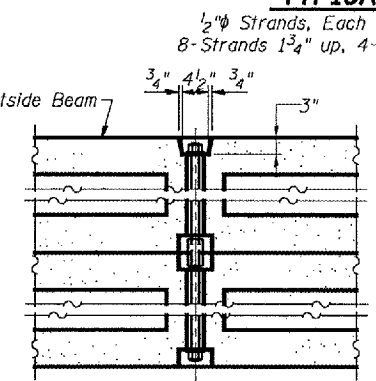
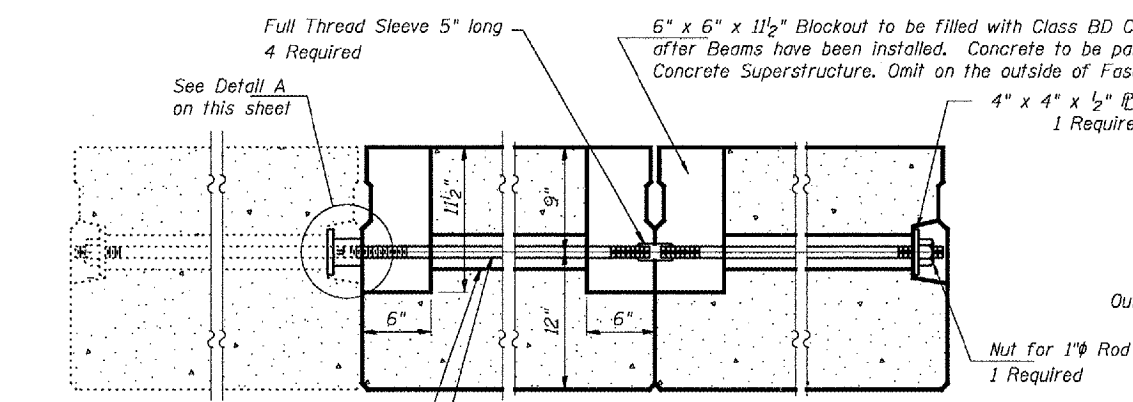
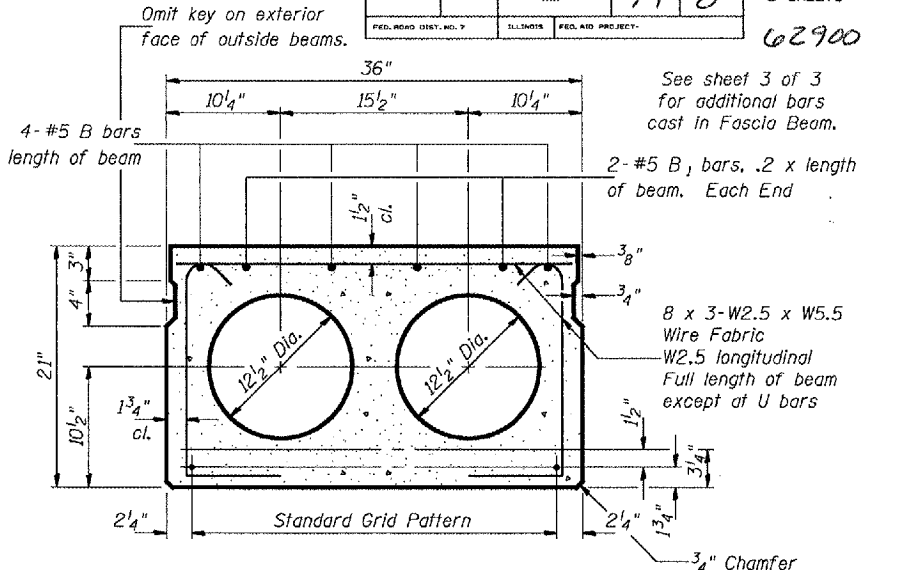
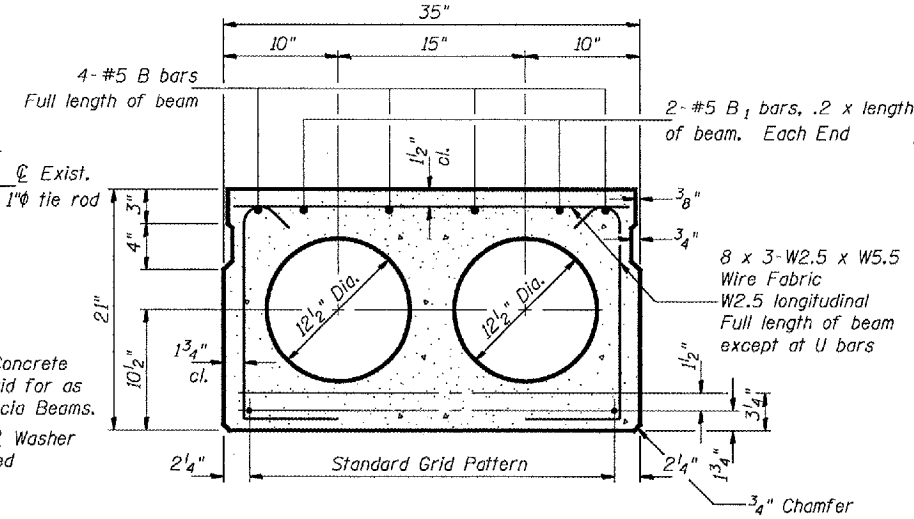
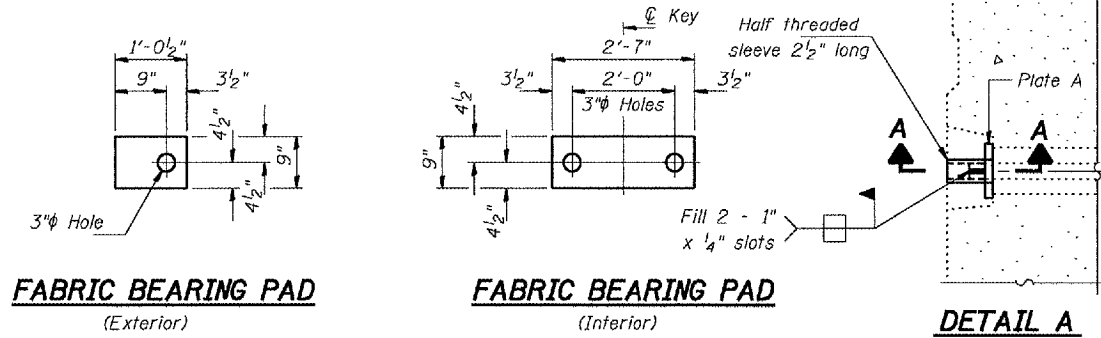


Expires 11-30-06

**PLAN AND ELEVATION
US 45 OVER NORTH
BRANCH PRAIRIE CREEK
WILL COUNTY
SN.099-0118**

STATE OF ILLINOIS
DEPARTMENT OF TRANSPORTATION

ROUTE NO.	SECTION	COUNTY	TOTAL SHEETS	SHEET NO.	SHEET NO. 2 3 SHEETS 62900
		Will	14	8	
FED. ROAD DIST. NO. 7		ILLINOIS	FED. AID PROJECT		



DESIGNED	V.H.V.
CHECKED	P.S.J.
DRAWN	Drew Christopher
CHECKED	V.H.V., P.S.J.

May 5, 2005
EXAMINED *John A. Morris*
PASSED *Ralph E. Anderson*

NOTES

Prestressing steel shall be uncoated high strength, low relaxation 7-wire strand, Grade 270. The nominal diameter shall be 1/2" and the nominal cross-sectional area shall be 0.153 sq. in. Lifting loops shall be 2-1/2" φ-270 ksi strands, as shown.

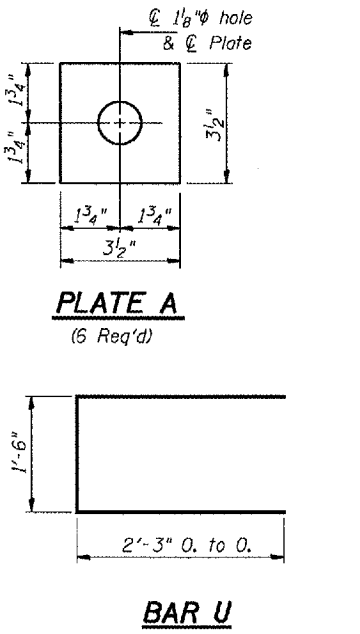
The 1" φ rods in the transverse tie assembly shall be tightened to a snug fit and the threads set. Pockets that receive transverse tie bar on outside shall be filled with grout after transverse tie assembly is in place.

Reinforcement bars shall conform to the requirements of AASHTO M-31 or M322 Grade 60. The bearing seat surfaces shall be adjusted by shimming to assure firm and even bearing. Two 1/8" fabric adjusting shims of the dimensions of the exterior bearing pad shall be provided for each bearing. Keyway surfaces shall be cleaned to remove form oil or other bond breaking material prior to shipment of the beams. Cleaning shall be done by sandblasting the keyway areas between top of the beam and the bottom edge of the key.

A Corrosion Inhibitor, as covered in the Special Provisions, shall be used in the concrete for precast prestressed concrete deck beams. Required Release Strength, 1'cl, shall be 4000 p.s.i.

BILL OF MATERIAL

Bar	No.	Size	Length	Shape
Precast Prestressed Conc. Deck Bms. (21")		Sq. Ft.	1065	

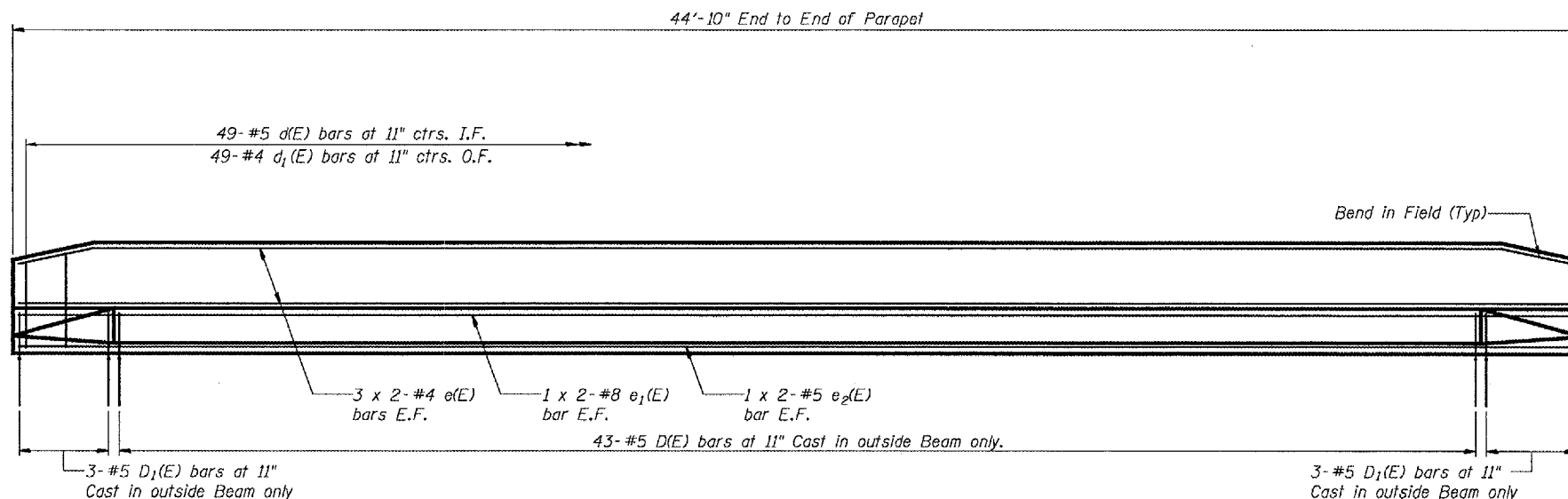


BEAM DETAILS
US 45 OVER NORTH
BRANCH PRAIRIE CREEK
WILL COUNTY
SN.099-0118

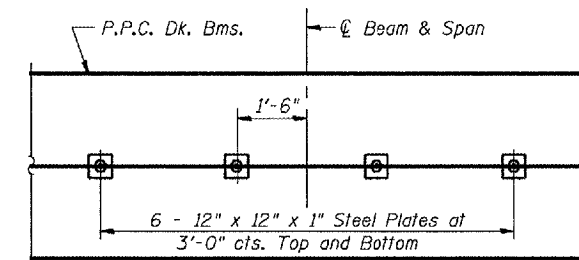
STATE OF ILLINOIS
DEPARTMENT OF TRANSPORTATION

ROUTE NO.	SECTION	COUNTY	TOTAL SHEETS	SHEET NO.	SHEET NO. 3 3 SHEETS
		Will	14	9	
FED. ROAD DIST. NO. 7	ILLINOIS	FED. AID PROJECT			

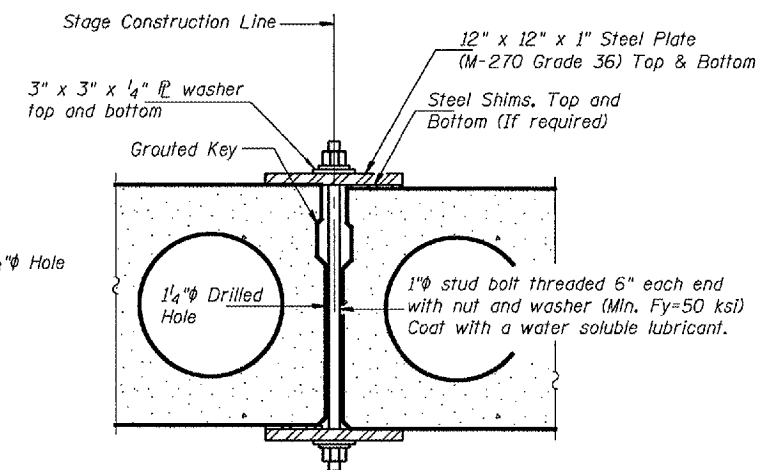
62900



PARAPET ELEVATION

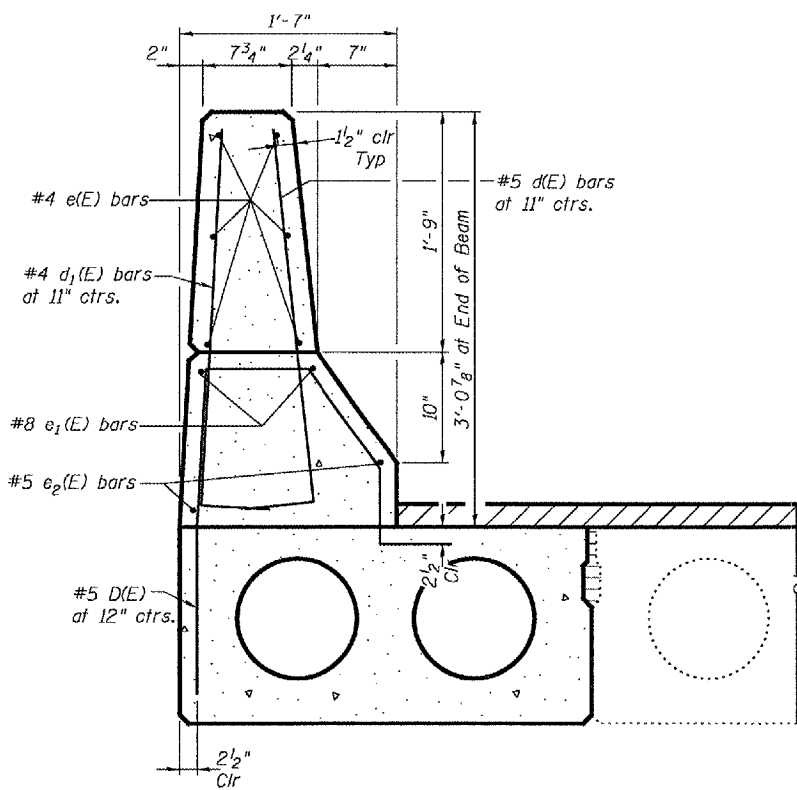


PLAN

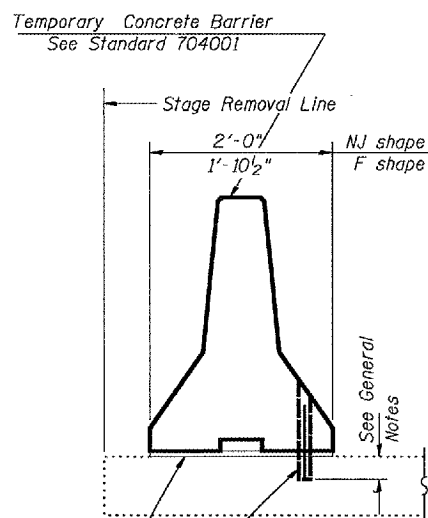


SECTION

CLAMPING PLATE

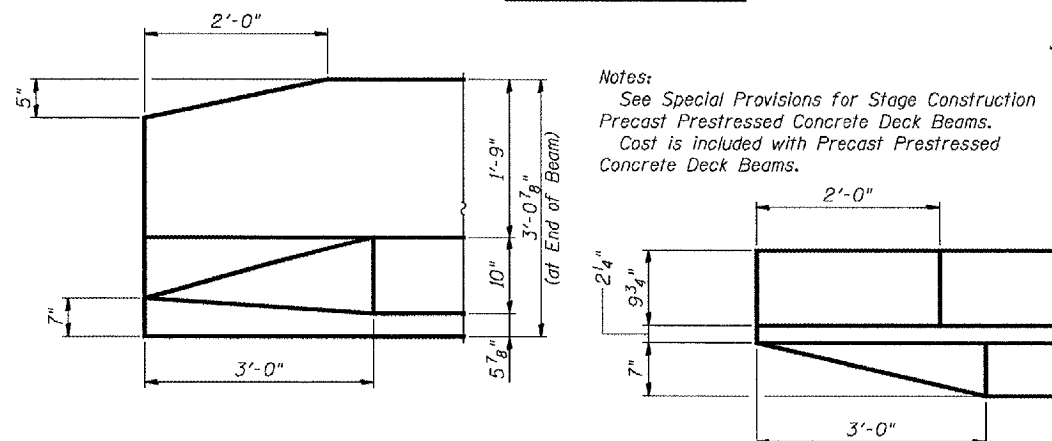


SECTION THRU PARAPET



TEMPORARY CONCRETE BARRIER

See Roadway Plans for quantity



PARAPET END DETAILS

Notes:
See Special Provisions for Stage Construction
Precast Prestressed Concrete Deck Beams.
Cost is included with Precast Prestressed
Concrete Deck Beams.

BILL OF MATERIAL

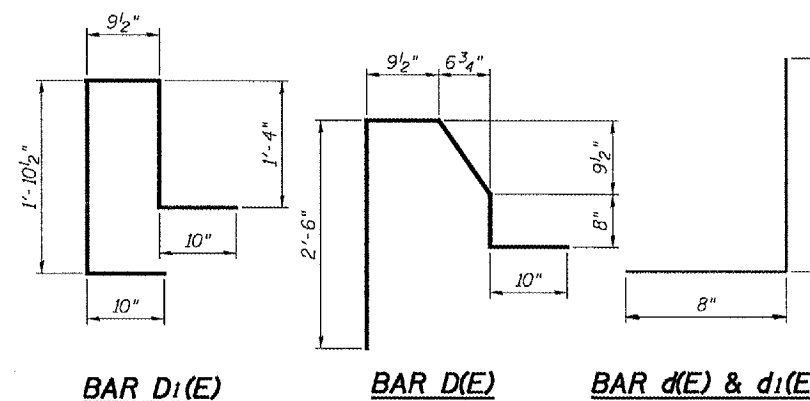
Bar	No.	Size	Length	Shape
d(E)	49	#5	3'-4"	
d1(E)	49	#4	3'-4"	
e(E)	12	#4	23'-3"	
e1(E)	4	#8	24'-8"	
e2(E)	4	#5	23'-6"	
Reinforcement Bars Epoxy Coated			Pound	830
Concrete Superstructure			Cu. Yd.	5.1
Concrete Removal			Cu. Yd.	5.1

All Bars Designated (E) Shall be Epoxy Coated.

Min. Bar Laps

- #4 = 1'-8"
- #5 = 2'-2"
- #8 = 4'-6"

**PARAPET, CONCRETE BARRIER AND STAGE DETAILS
US 45 OVER NORTH
BRANCH PRAIRIE CREEK
WILL COUNTY
SN.099-0118**



BAR D1(E)

BAR D(E)

BAR d(E) & d1(E)

DESIGNED	V.H.V.
CHECKED	P.S.J.
DRAWN	Drew Christopher
CHECKED	V.H.V. P.S.J.

EXAMINED	John A. Morris ENGINEER OF STRUCTURAL SERVICES
PASSED	Ralph E. Anderson ENGINEER OF BRIDGES AND STRUCTURES

May 5, 2005

STATE OF ILLINOIS
DEPARTMENT OF TRANSPORTATION

ROUTE NO.	SECTION	COUNTY	TOTAL SHEETS	SHEET NO.
		Will	14	10
SHEET NO. 1 3 SHEETS				

62900

GENERAL NOTES

Plan dimensions and details relative to existing structure have been taken from existing plans and are subject to nominal construction variations. It shall be the Contractor's responsibility to verify such dimensions and details in the field and make necessary approved adjustments prior to construction or ordering of materials. Such variations shall not be cause for additional compensation for a change in the scope of the work, however, the Contractor will be paid for the quantity actually furnished at the unit price bid for the work.

Any damage done to the bridge during beam removal shall be repaired by the Contractor. Cost to be included in the cost of "Removal of Existing P.P.C. Deck Beams".

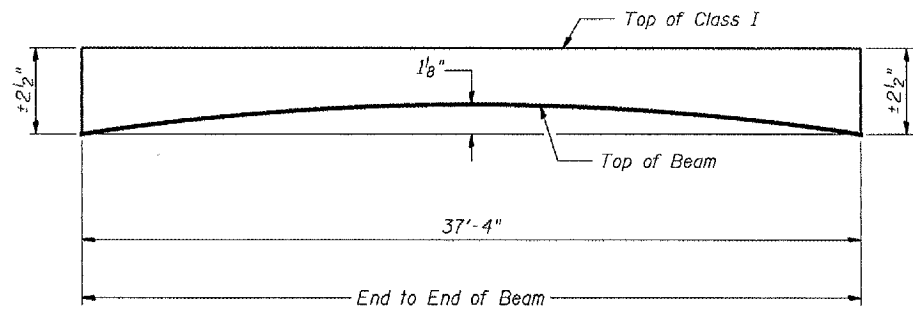
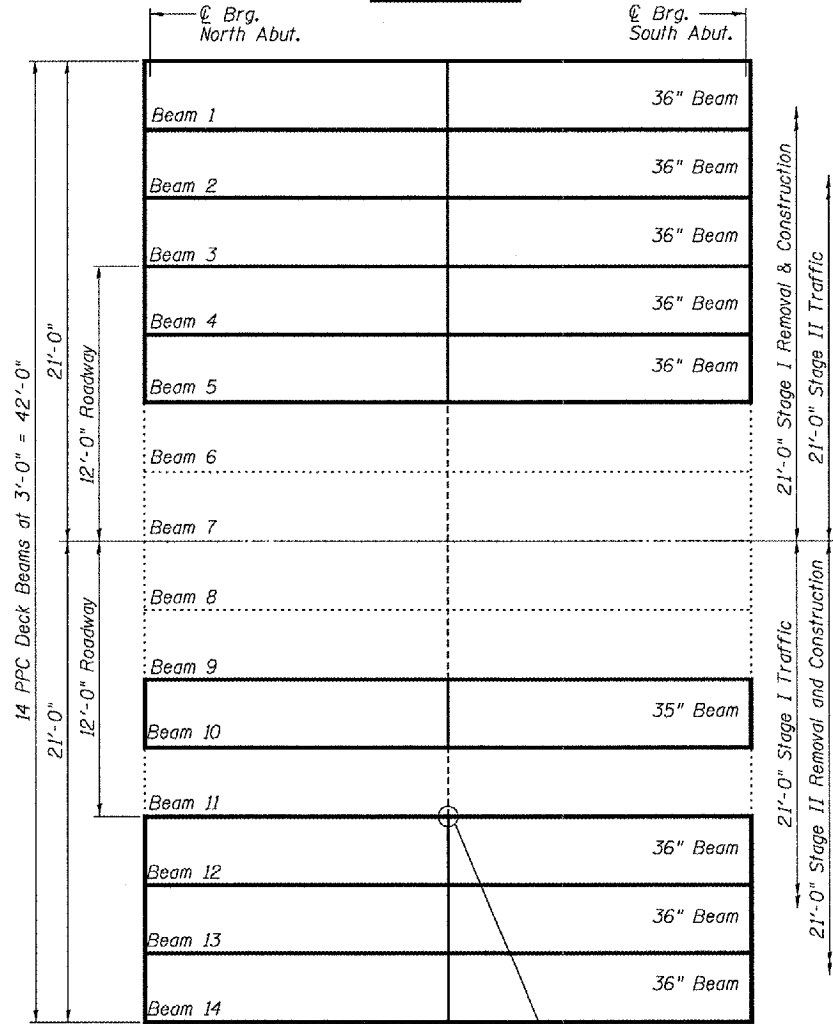
Reinforcement bars shall conform to the requirements of AASHTO M-31 or M322 Grade 60.

The top surface of the beams shall be finished in accordance with Article 504.06 of the Standard Specifications except that the surface shall not be roughened by brooming. The finished surface shall be free of depressions or high spots with sharp corners, and the top edge of keys shall be rounded or chamfered a minimum of 1/4".

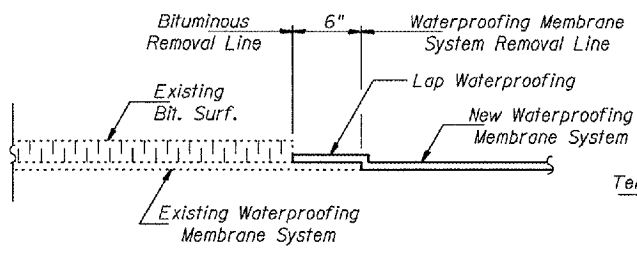
Temporary concrete barrier shall only be anchored into the overlay and not the PPC Deck Beams.



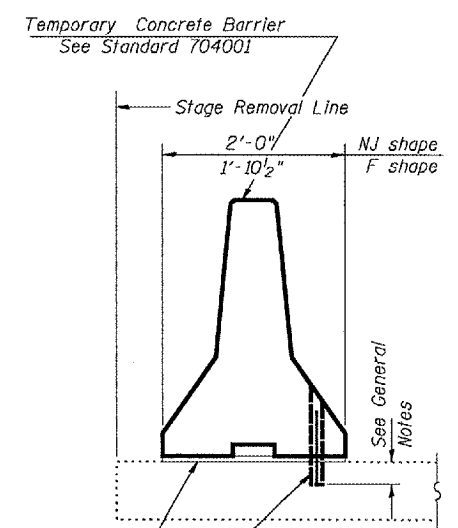
ELEVATION



ANTICIPATED INITIAL CAMBER DIAGRAM



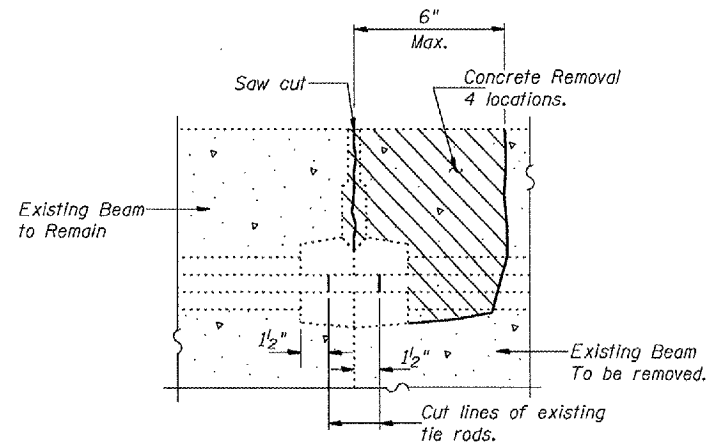
WATERPROOFING TREATMENT



SECTIONS THRU SLAB SHOWING TEMPORARY CONCRETE BARRIER

Drill 1/4" ϕ Holes in existing overlay for 1" ϕ x 10" dowel bars. Traffic side only. Cost included with Temporary Concrete Barrier.

Styrofoam Pads (NJ Shape only) See Standard 704001



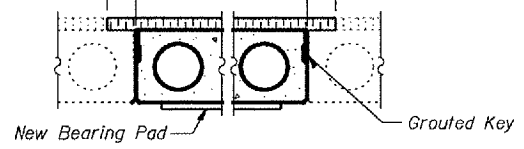
BEAM REMOVAL DETAIL AT TRANSVERSE TIES

TOTAL BILL OF MATERIAL

ITEM	UNIT	QUANTITY
Precast Prestressed Concrete Deck Beams (17" Depth)	Sq. Ft.	1005
Bituminous Concrete Surface Removal	Sq. Yd.	8.3
Removal of Existing PPC Deck Beams	Sq. Ft.	1008
Bituminous Concrete Surface Course, Superpave Mix "D" N50	Ton	12.4
PC Mortar Fairing Course	Foot	373
Reinforcement Bars, Epoxy Coated	Pound	1360
Waterproofing Membrane System	Sq. Yd.	110
Concrete Superstructure	Cu. Yd.	8.5
Concrete Removal	Cu. Yd.	8.5
Floor Drains	Each	6
Protective Coat	Sq. Yd.	14.2

Existing Tie Rods to be cut (Typ). See Detail This sheet.

PLAN



PARTIAL CROSS SECTION



Expires 11-30-06

DESIGN STRESSES PRESTRESS UNITS

$f'_c = 5,000$ psi
 $f'_{ci} = 4,000$ psi
 $f'_s = 270,000$ psi (1/2" ϕ Low Relaxation Strands)
 $f'_{sl} = 201,960$ psi (1/2" ϕ Low Relaxation Strands)

PLAN AND ELEVATION
F.A. RT. 124
WILL COUNTY
SN.099-0119

DESIGNED: *Vickie H. Velazquez*
 CHECKED: *Mike Trallock*
 DRAWN: *[Signature]*
 CHECKED: *MJT UHV*

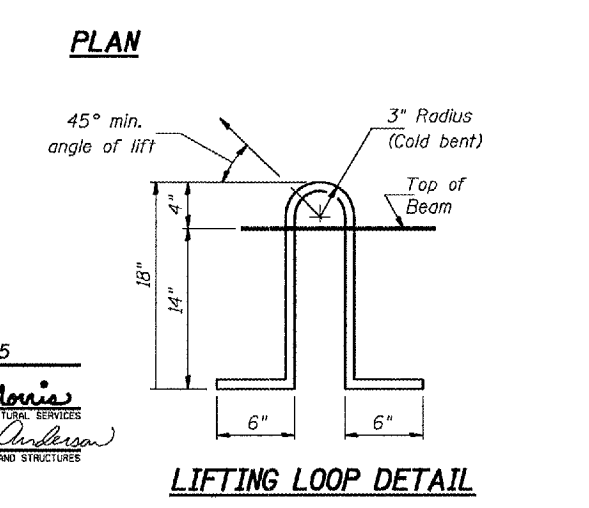
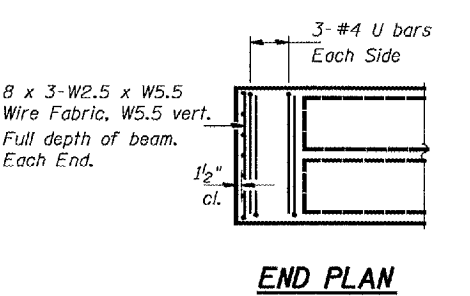
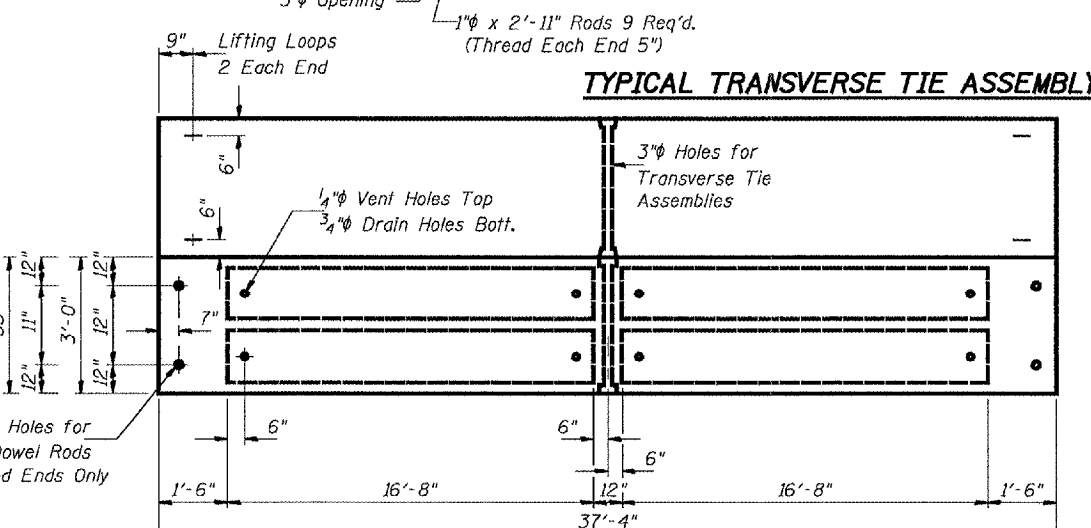
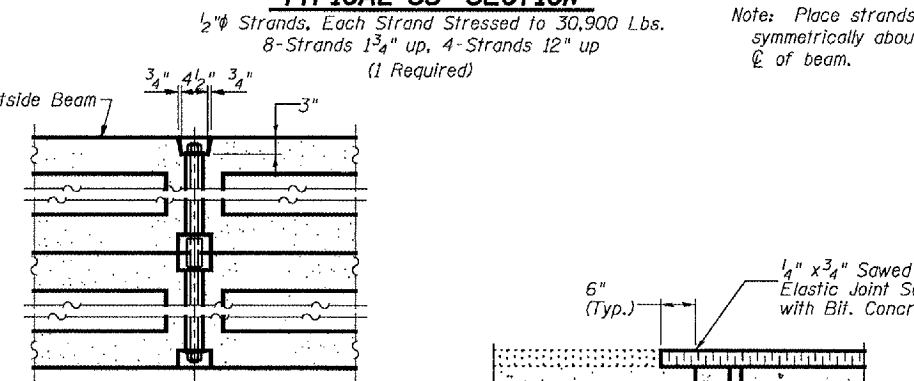
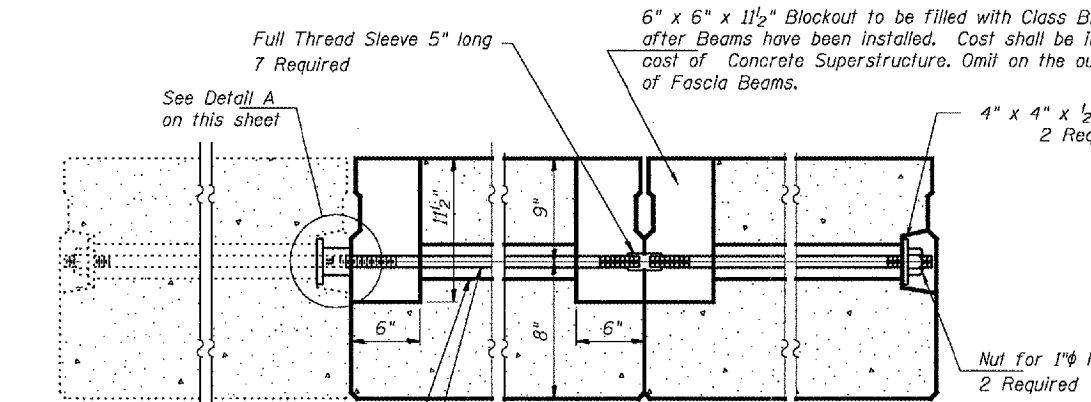
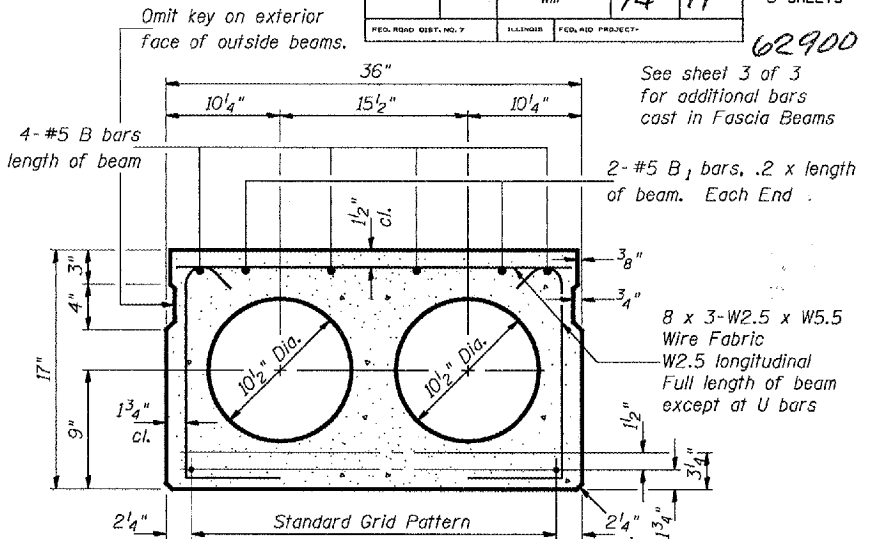
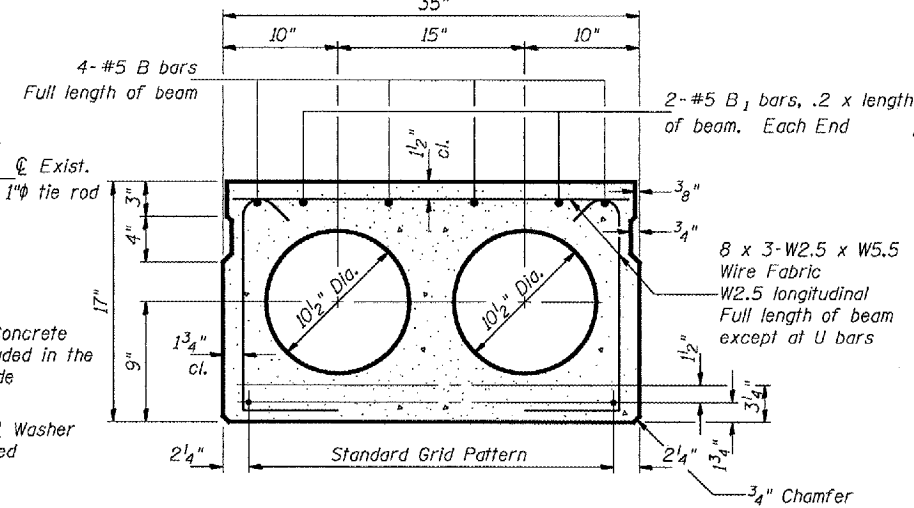
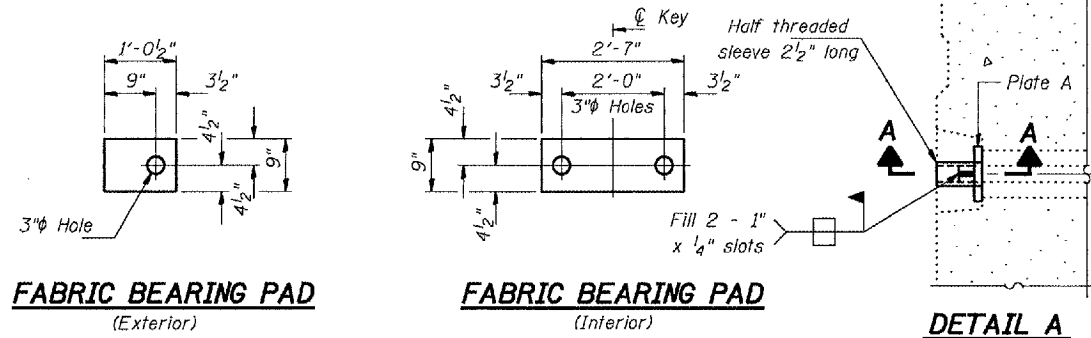
May 8, 2005

EXAMINED: *[Signature]*
 ENGINEER OF STRUCTURAL SERVICES

PASSED: *[Signature]*
 ENGINEER OF BRIDGES AND STRUCTURES

STATE OF ILLINOIS
DEPARTMENT OF TRANSPORTATION

ROUTE NO.	SECTION	COUNTY	SHEET	SHEET NO.
		Will	14 11	3 SHEETS
62900				



DESIGNED	V.H.V.
CHECKED	M.J.T.
DRAWN	Drew Christopher
CHECKED	V.H.V. M.J.T.

May 5, 2005
EXAMINED *John A. Morris*
ENGINEER OF STRUCTURAL SERVICES
PASSED *Ralph E. Anderson*
ENGINEER OF BRIDGES AND STRUCTURES

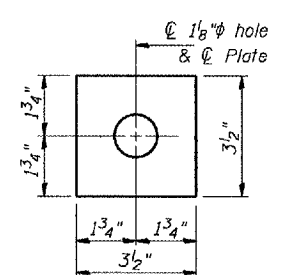
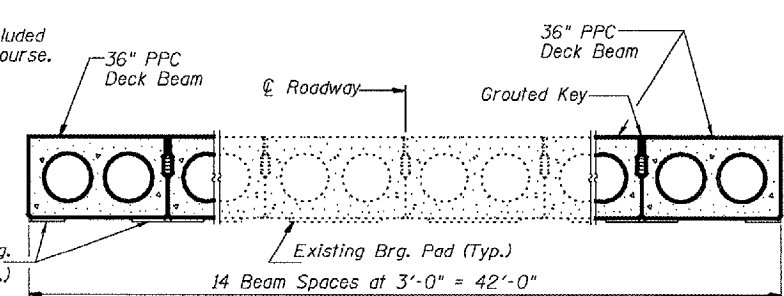
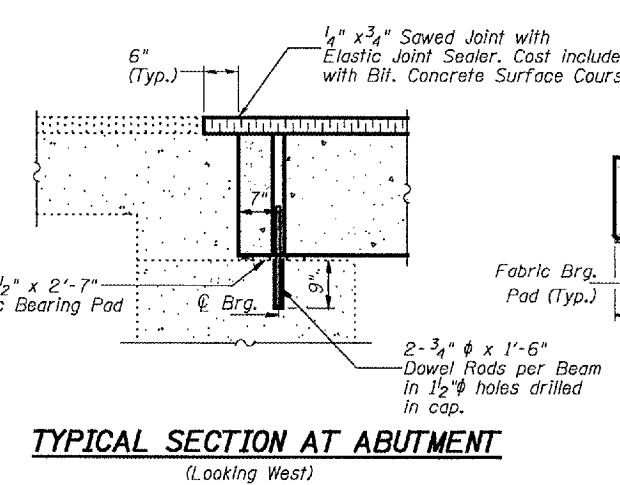
NOTES

Prestressing steel shall be uncoated high strength, low relaxation 7-wire strand, Grade 270. The nominal diameter shall be 1/2" and the nominal cross-sectional area shall be 0.153 sq. in. Lifting loops shall be 2 - 1/2" - 270 ksi strands, as shown.

The 1" rods in the transverse tie assembly shall be tightened to a snug fit and the threads set. Pockets that receive transverse tie bar on outside shall be filled with grout after transverse tie assembly is in place.

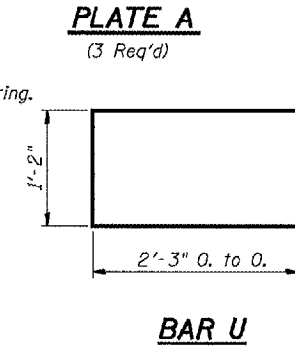
Reinforcement bars shall conform to the requirements of AASHTO M-31 or M322 Grade 60. The bearing seat surfaces shall be adjusted by shimming to assure firm and even bearing. Two 1/8" fabric adjusting shims of the dimensions of the exterior bearing pad shall be provided for each bearing. Keyway surfaces shall be cleaned to remove form oil or other bond breaking material prior to shipment of the beams. Cleaning shall be done by sandblasting the keyway areas between top of the beam and the bottom edge of the key.

A Corrosion Inhibitor, as covered in the Special Provisions, shall be used in the concrete for precast prestressed concrete deck beams. Required Release Strength, f'ci, shall be 4000 p.s.i.



BILL OF MATERIAL

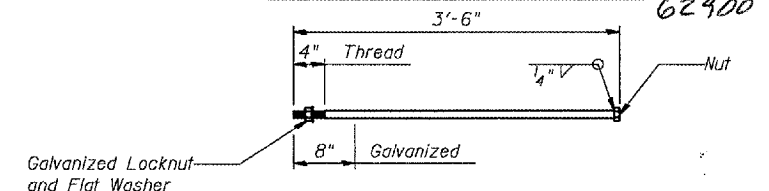
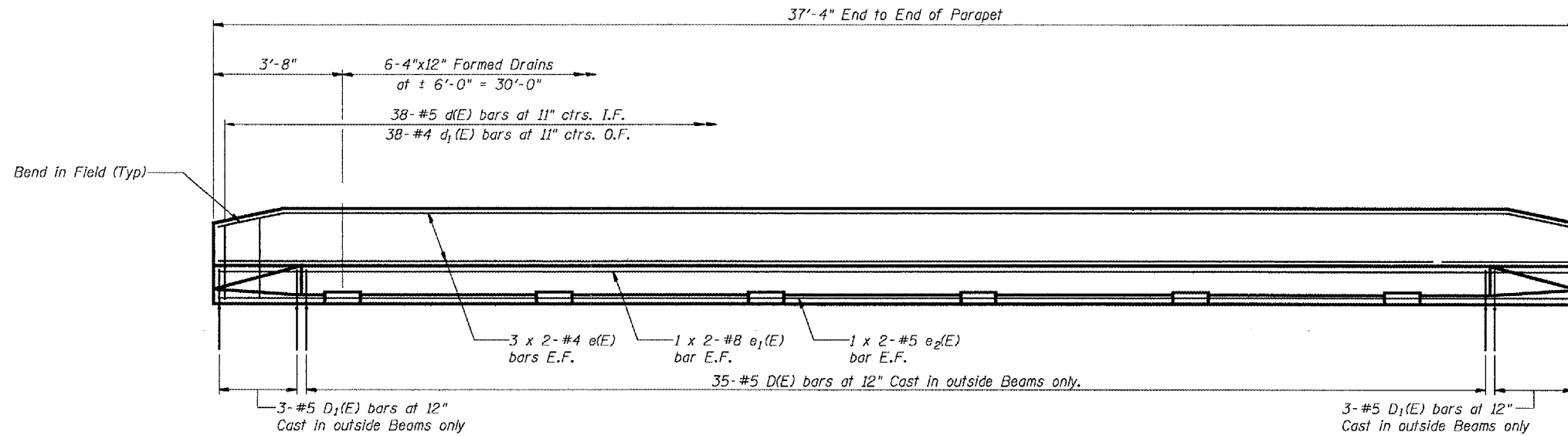
Bar	No.	Size	Length	Shape
Precast Prestressed Conc. Deck Bms. (17")		Sq. Ft.	1005	



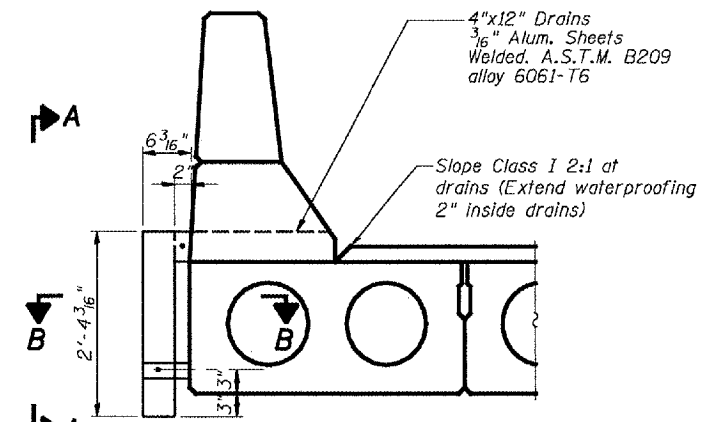
BEAM DETAILS
F.A. RT. 124
WILL COUNTY
SN.099-0119

STATE OF ILLINOIS
DEPARTMENT OF TRANSPORTATION

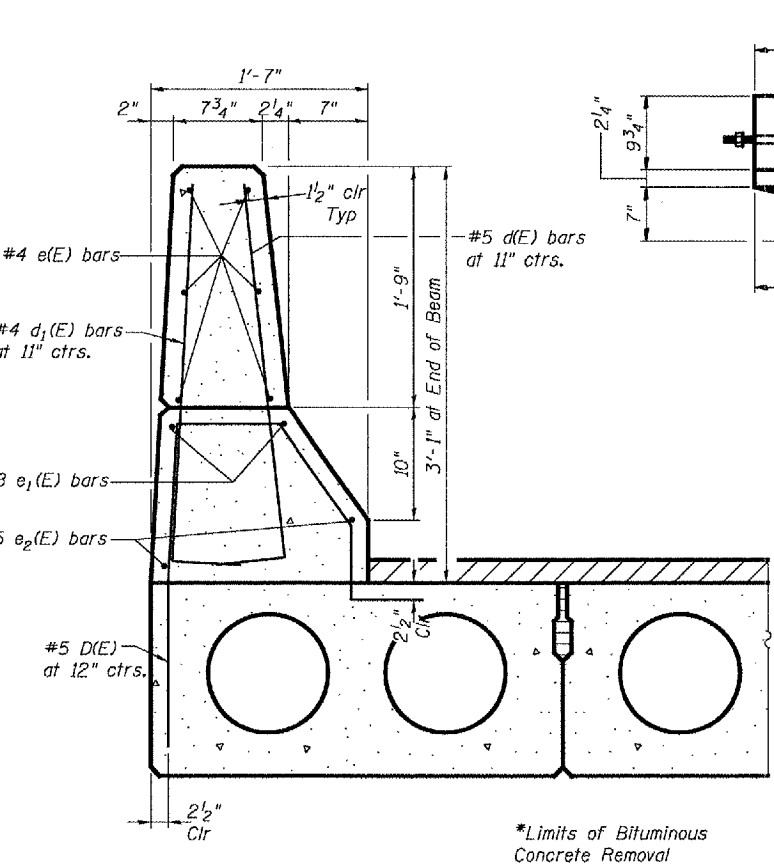
ROUTE NO.	SECTION	COUNTY	TOTAL SHEETS	SHEET NO.	SHEET NO. 3
		Will	14	12	3 SHEETS
FED. ROAD DIST. NO. 7	NUMBER	FED. AID PROJECT			62900



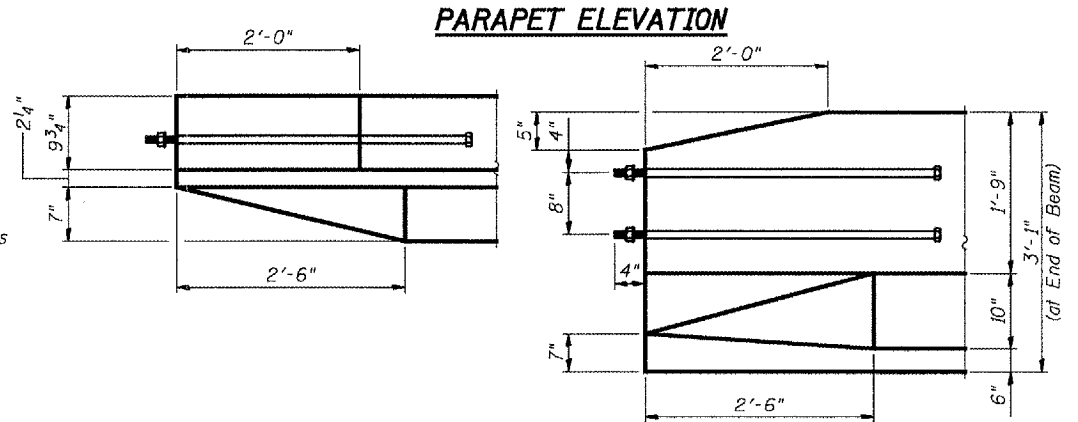
1" ANCHOR BOLT
Cost included with
Concrete Superstructure



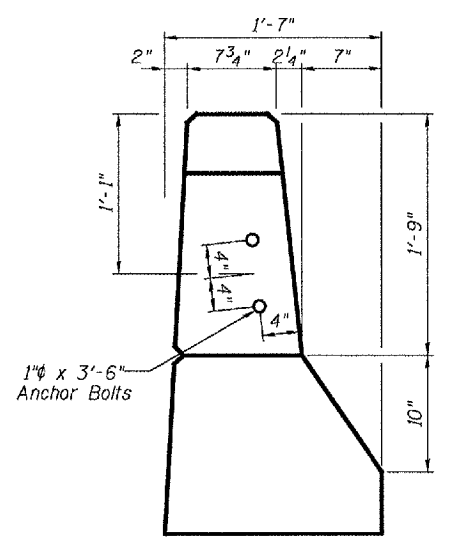
SECTION THRU PARAPET SHOWING DRAIN
Cost of aluminum drains included with Floor Drains



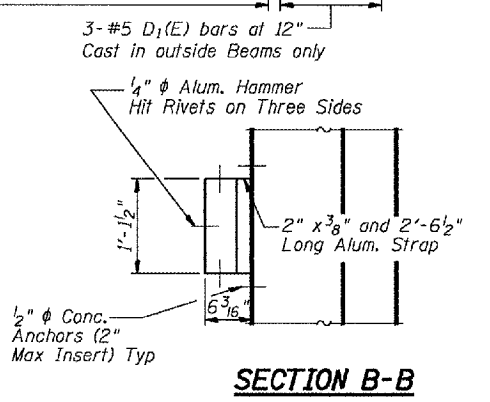
SECTION THRU PARAPET



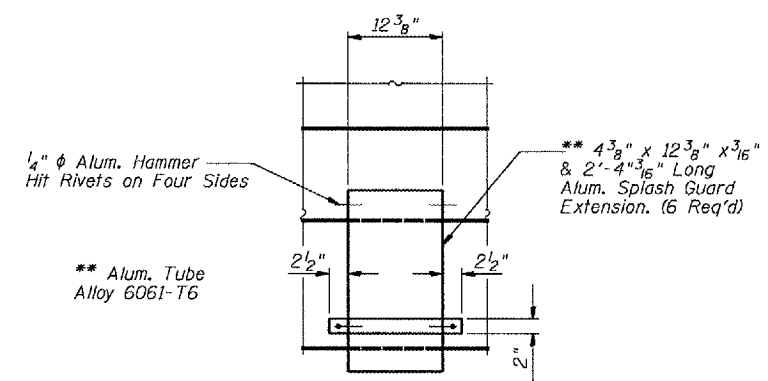
PARAPET END DETAILS



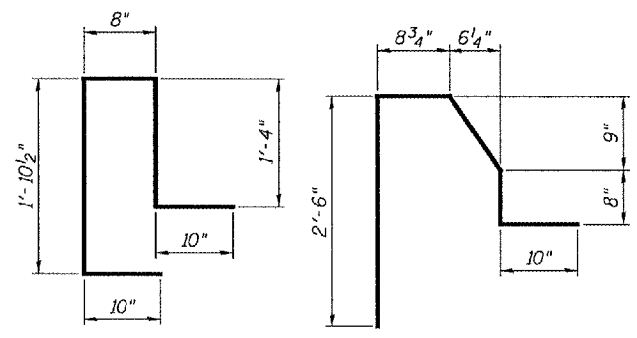
PARAPET END VIEW



SECTION B-B

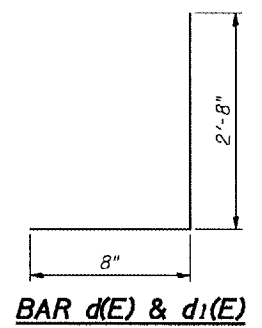


SECTION A-A



BAR D1(E)

BAR D(E)



BAR d(E) & d1(E)

BILL OF MATERIAL

Bar	No.	Size	Length	Shape
d(E)	76	#5	3'-4"	U
d1(E)	76	#4	3'-4"	U
e(E)	24	#4	19'-6"	—
e1(E)	8	#8	20'-11"	—
e2(E)	8	#5	19'-9"	—
Reinforcement Bars Epoxy Coated			Pound	1360
Concrete Superstructure Cu. Yd.				8.5
Concrete Removal Cu. Yd.				8.5

All Bars Designated (E) Shall be Epoxy Coated.

Min. Bar Laps
#4 = 1'-8"
#5 = 2'-2"
#8 = 4'-6"

PARAPET DETAILS
F.A. RT. 124
WILL COUNTY
SN.099-0119

DESIGNED	V.H.V.
CHECKED	M.J.T.
DRAWN	Drew Christopher
CHECKED	V.H.V. M.J.T.

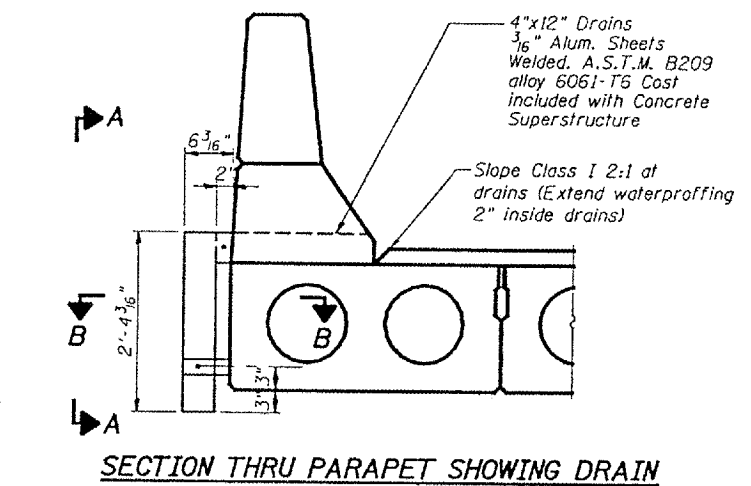
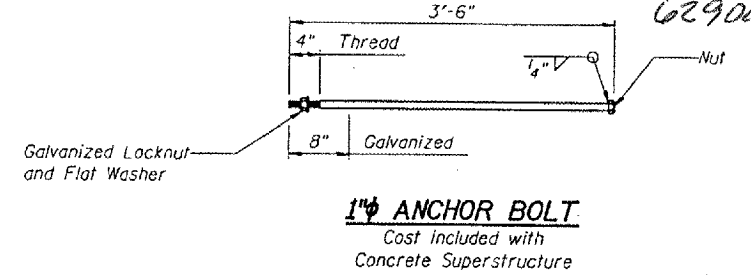
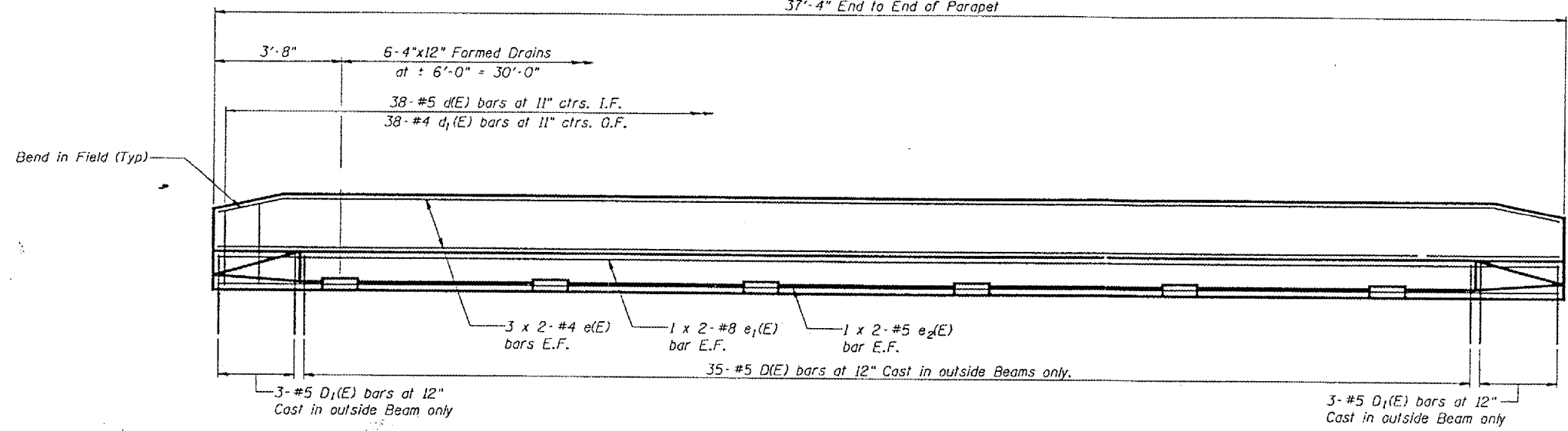
May 5, 2005
EXAMINED *John A. Morris*
ENGINEER OF STRUCTURAL SERVICES
PASSED *Ralph E. Anderson*
ENGINEER OF BRIDGES AND STRUCTURES

STATE OF ILLINOIS
DEPARTMENT OF TRANSPORTATION

ROUTE NO.	SECTION	COUNTY	DATE	SHEET NO.
FAP 330	000-1201	WILL	14 13	3 SHEETS

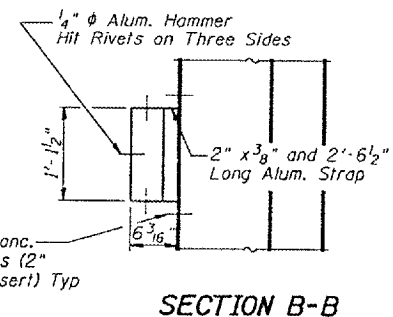
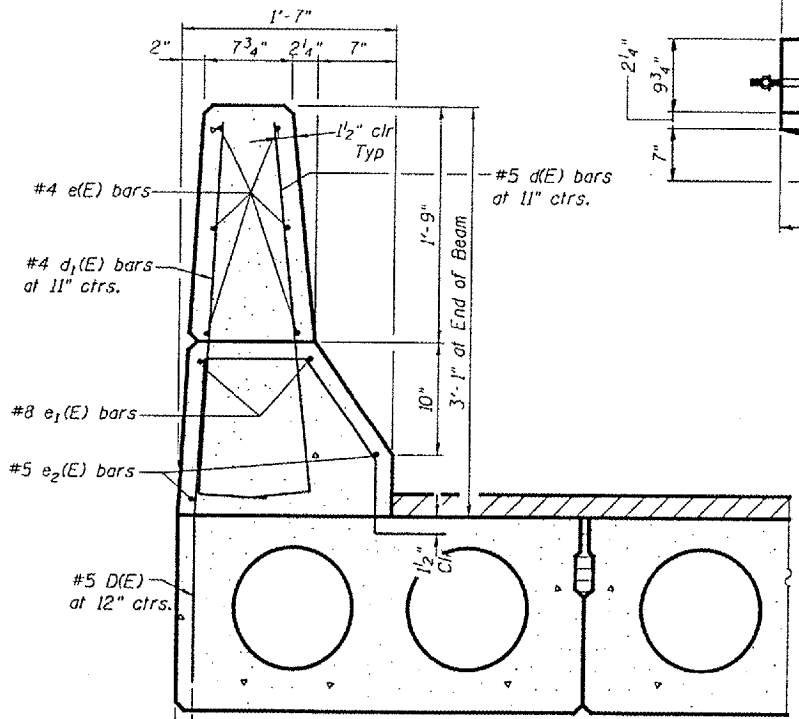
62900

37'-4" End to End of Parapet



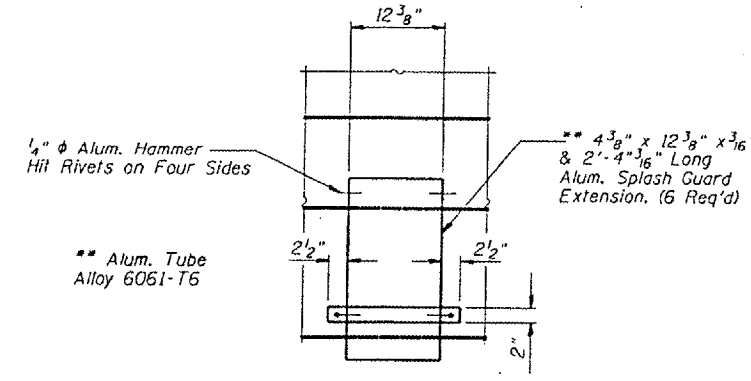
PARAPET ELEVATION

SECTION THRU PARAPET SHOWING DRAIN



SECTION B-B

PARAPET END DETAILS



SECTION A-A

BILL OF MATERIAL

Bar	No.	Size	Length	Shape
d(E)	76	#5	3'-4"	□
d1(E)	76	#4	3'-4"	□
e(E)	24	#4	19'-6"	—
e1(E)	8	#8	20'-11"	—
e2(E)	8	#5	19'-9"	—
Reinforcement Bars Epoxy Coated		Pound	1360	
Concrete Superstructure		Cu. Yd.	8.5	
Concrete Removal		Cu. Yd.	8.5	

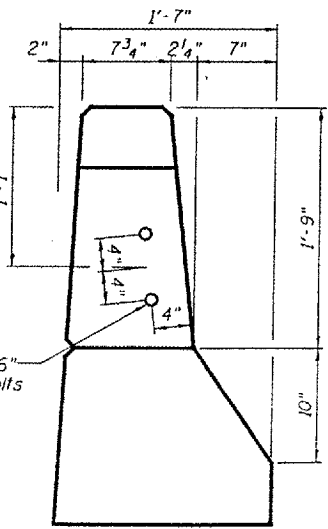
All Bars Designated (E) Shall be Epoxy Coated.

Min. Bar Laps

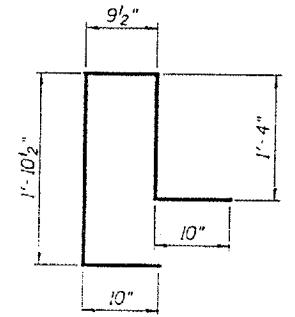
- #4 = 1'-8"
- #5 = 2'-2"
- #8 = 4'-5"

PARAPET DETAILS
F.A. RT. 124
WILL COUNTY
SN.099-0119

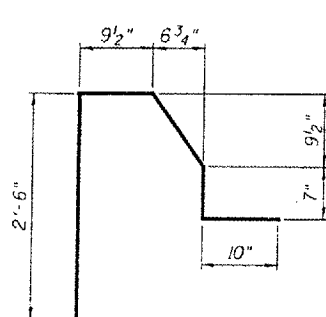
SECTION THRU PARAPET



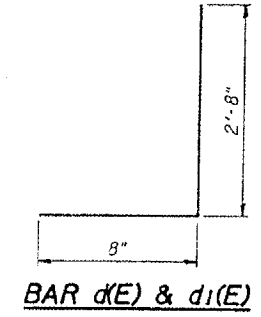
PARAPET END VIEW



BAR d1(E)



BAR D(E)



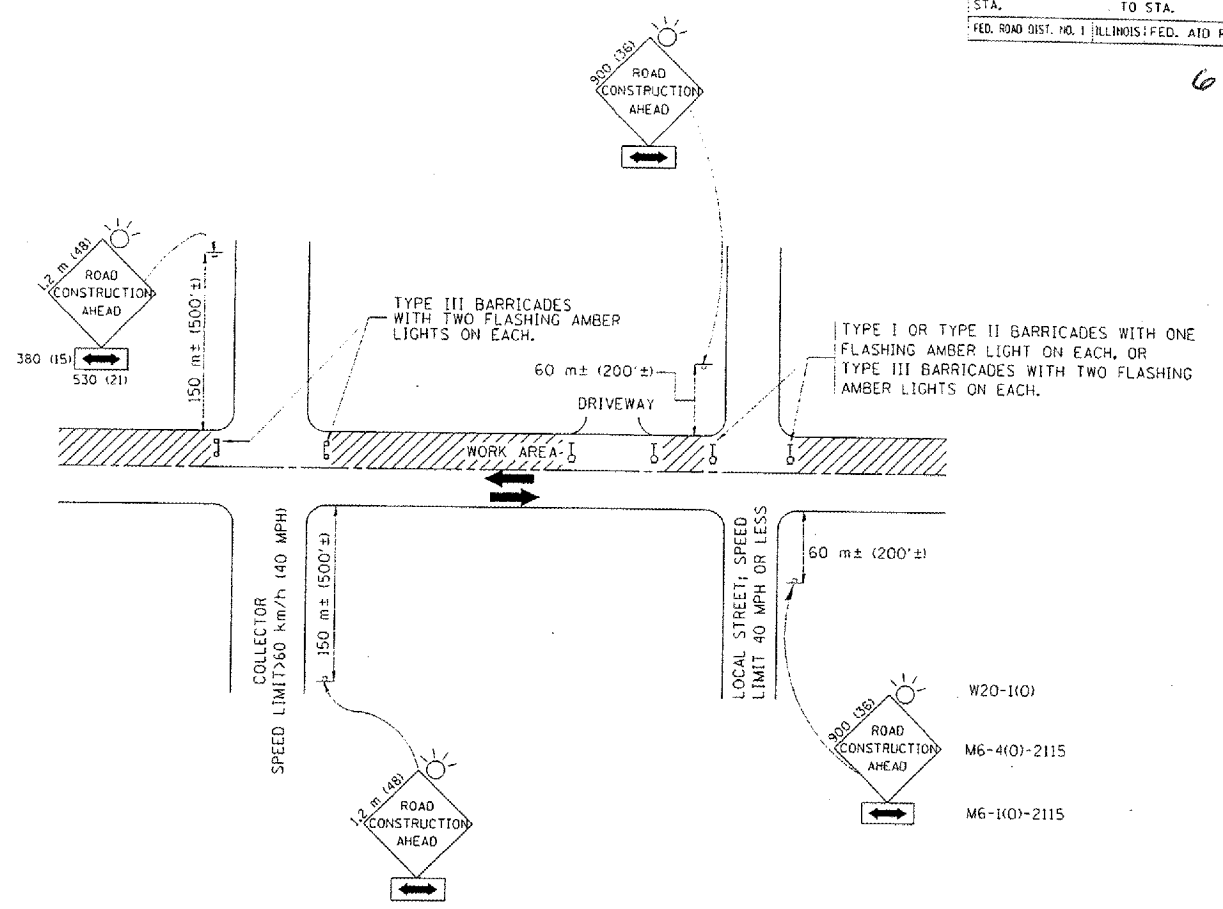
BAR d(E) & d1(E)

DESIGNED	V.H.V.
CHECKED	M.A.C.
DRAWN	Drew Christopher
CHECKED	V.H.V. M.A.C.

FINAL DATE	SIG
EXAMINED	ENGINEER OF STRUCTURAL SERVICES
PASSED	ENGINEER OF BRIDGES AND STRUCTURES

2nd PRE-FINAL
DATE: 04/22/2004

62900



TRAFFIC CONTROL AND PROTECTION FOR SIDE ROADS, INTERSECTIONS, AND DRIVEWAYS

NOTES:

- A. FOR NO LANE RESTRICTION ON THE SIDE ROAD OR DRIVEWAYS
- SIDE ROAD WITH A SPEED LIMIT OF 60 km/h (40 MPH) OR LESS AS SHOWN ON THE DRAWING AND AS DIRECTED BY THE ENGINEER:
 - ONE ROAD CONSTRUCTION AHEAD SIGN 900x900 (36x36) WITH A FLASHER AND FLAG MOUNTED ON IT APPROXIMATELY 60 m (200') IN ADVANCE OF THE MAIN ROUTE.
 - THE CLOSED PORTION OF THE MAIN ROUTE SHALL BE PROTECTED BY BLOCKING WITH TYPE I, TYPE II OR TYPE III BARRICADES, 1/3 OF THE CROSS SECTION OF THE CLOSED PORTION.
 - SIDE ROAD WITH A SPEED LIMIT GREATER THAN 60 km/h (40 MPH) AS SHOWN ON THE DRAWING AND AS DIRECTED BY THE ENGINEER:
 - ONE ROAD CONSTRUCTION AHEAD SIGN 1.2 m x 1.2 m (48x48) WITH A FLASHER MOUNTED ON IT APPROXIMATELY 150 m (500') IN ADVANCE OF THE MAIN ROUTE.
 - THE CLOSED PORTION OF THE MAIN ROUTE SHALL BE PROTECTED BY BLOCKING WITH TYPE III BARRICADES, 1/2 OF THE CROSS SECTION OF THE CLOSED PORTION.
3. WHEN THE SIDE ROAD LIES BETWEEN THE BEGINNING OF THE MAINLINE SIGNING AND THE WORK ZONE, A SINGLE HEADED ARROW (M6-1) SHALL BE USED IN LIEU OF THE DOUBLE HEADED ARROW (M6-2).
- B. FOR A LANE CLOSURE ON A SIDE ROAD OR DRIVEWAY:
- USE APPLICABLE PORTIONS OF THE TYPICAL APPLICATION OF TRAFFIC CONTROL DEVICES (STD. 701501, STD. 701606 OR THE APPROPRIATE STANDARD). THE SPACING OF SIGNS AND BARRICADES SHALL BE ADJUSTED FOR FIELD CONDITIONS AS DIRECTED BY THE ENGINEER. THE DIRECTIONAL ARROW SHALL BE COVERED OR REMOVED WHEN NO LONGER CONSISTENT WITH THE SIDE ROAD LANE CLOSURE.
- C. ADVANCE WARNING SIGNS ARE TO BE OMITTED ON DRIVEWAY UNLESS OTHERWISE NOTED.
- D. THE TRAFFIC CONTROL AND PROTECTION FOR SIDE ROADS, INTERSECTIONS, AND DRIVEWAYS SHALL BE INCIDENTAL TO THE COST OF SPECIFIED TRAFFIC CONTROL STANDARDS OR ITEMS.

REVISIONS		
NAME	DATE	
LHA	8/89	
T. PAMMACHER	09/08/94	
J. JOERLE	10/18/95	
A. HOUSEH	03/06/96	
A. HOUSEH	10/15/96	
T. PAMMACHER	10/06/00	

ILLINOIS DEPARTMENT OF TRANSPORTATION
 TRAFFIC CONTROL AND PROTECTION
 FOR
 SIDE ROADS, INTERSECTIONS, AND
 DRIVEWAYS

SCALE: VERT. _____
 HORIZ. _____
 DATE 10/15/2002
 DRAWN BY _____
 CHECKED BY _____