

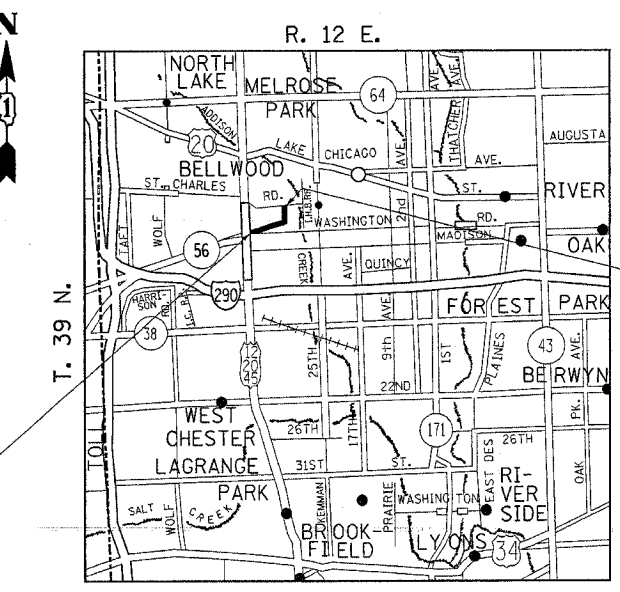
FAU	SECTION	COUNTY	TOTAL SHEETS	SHEET NO.
3545	0303.1 RS	COOK	15	1
			+1	
			= 16 Total Sheets	

STATE OF ILLINOIS
DEPARTMENT OF TRANSPORTATION
DIVISION OF HIGHWAYS
**PLANS FOR PROPOSED
HIGHWAY**

**FAU ROUTE 3545 - (BUTTERFIELD RD)
SECTION: 0303.1 RS
US 12/20/45 TO ST. CHARLES RD
RESURFACING (MAINTENANCE)
COOK COUNTY
C-91-151-05**

FOR INDEX OF SHEETS, SEE SHEET NO. 2

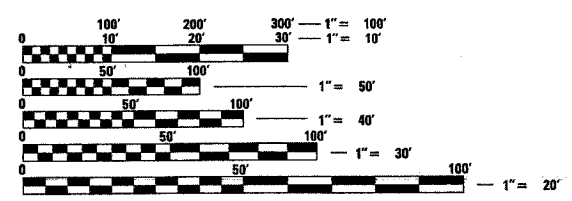
THE IMPROVEMENT IS LOCATED IN THE VILLAGE OF BELLWOOD



IMPROVEMENT ENDS
STATION 46+54

IMPROVEMENT BEGINS
STATION 13+57

TRAFFIC DATA
2002 ADT = 2200
POSTED SPEED LIMIT = 30 MPH



FULL SIZE PLANS HAVE BEEN PREPARED USING STANDARD ENGINEERING SCALES. REDUCED SIZED PLANS WILL NOT CONFORM TO STANDARD SCALES. IN MAKING MEASUREMENTS ON REDUCED PLANS, THE ABOVE SCALES MAY BE USED.

J.U.L.I.E.
JOINT UTILITY LOCATION INFORMATION FOR EXCAVATION
1-800-892-0123

CONTRACT NO. 62920

GROSS LENGTH OF IMPROVEMENT = 3297 LINEAL FEET = 0.624 MILE
NET LENGTH OF IMPROVEMENT = 3297 LINEAL FEET = 0.624 MILE

STATE OF ILLINOIS
DEPARTMENT OF TRANSPORTATION
DIVISION OF HIGHWAYS

SUBMITTED March 30, 20 05

Dina O'Keefe, P.E.
DEPUTY DIRECTOR OF HIGHWAYS, REGION ENGINEER

May 13, 2005
Mike Nene, P.E.
ENGINEER OF DESIGN AND ENVIRONMENT

May 13, 2005
Victor Moders, P.E.
DIRECTOR OF HIGHWAYS, CHIEF ENGINEER

**PRINTED BY THE AUTHORITY
OF THE STATE OF ILLINOIS**

DISTRICT ONE DESIGN PLAN PREPARATION ENGINEER:
KEN ENG/ISSAM RAYAN (847)705-4247

FAP FAU	SECTION	COUNTY	TOTAL SHEETS	SHEET NO.
3545	0303.1 RS	COOK	15	2
STA.		TO STA.		
FED. ROAD DIST. NO. 1 ILLINOIS FED. AID PROJECT				

INDEX OF SHEETS:

SHEET NO.	DESCRIPTION:
1	COVER SHEET
2	INDEX OF SHEETS, STANDARDS, AND GENERAL NOTES
3	SUMMARY OF QUANTITIES
4	TYPICAL SECTIONS
5	EXISTING AND PROPOSED ROADWAY PLAN
5A	DETECTOR LOOP PLAN "FOR INFORMATION ONLY"
6	DETAILS FOR FRAMES AND LIDS ADJUSTMENT WITH MILLING
7	PAVEMENT PATCHING FOR BITUMINOUS SURFACED PAVEMENT
8	CURB OR CURB AND GUTTER REMOVAL AND REPLACEMENT
9	BUTT JOINT AND BITUMINOUS TAPER DETAILS
10	BITUMINOUS TAPER AT EDGE OF P.C.C. PAVEMENT
11	TRAFFIC CONTROL AND PROTECTION FOR SIDE ROADS, INTERSECTIONS, AND DRIVEWAYS
12	TYPICAL APPLICATIONS RAISED REFLECTIVE PAVEMENT MARKERS (SNOW-PLOW RESISTANT)
13	DISTRICT ONE TYPICAL PAVEMENT MARKINGS
14	PAVEMENT MARKINGS, LETTERS AND SYMBOLS FOR TRAFFIC STAGING
15	TEMPORARY INFORMATION SIGNING

LIST OF STATE STANDARDS

STANDARD NO.	DESCRIPTION
000001-04	STANDARD SYMBOLS, ABBREVIATIONS AND PATTERNS
442201-01	CLASS C AND D PATCHES
604001-02	FRAME AND LIDS, TYPE I
604051-01	FRAME AND GRATE, TYPE II
606001-02	CONCRETE CURB AND COMBINATION CONCRETE CURB AND GUTTER
701301-02	LANE CLOSURE, 2-L, 2-W, SHORT TIME OPERATIONS
701201-02	LANE CLOSURE, 2-L, 2-W, DAY ONLY, ON-ROAD TO 600 MM OFF-ROAD, SPEED > 45 MPH
701306-01	LANE CLOSURE, 2-L, 2-W, SLOW MOVING DAY ONLY OPERATION, SPEED > 45 MPH
701311-02	LANE CLOSURE, 2-L, 2-W, MOVING DAY ONLY OPERATIONS
701501-03	URBAN LANE CLOSURE, 2-L, 2-W, UNDIVIDED
701606-04	URBAN LANE CLOSURE, MULTILANE, 2W, WITH MOUNTABLE MEDIAN
701701-04	OURBAN LANE CLOSURE, MULTILANE INTERSECTION
702001-05	TRAFFIC CONTROL DEVICES

GENERAL NOTES:

- BEFORE STARTING ANY EXCAVATION, THE CONTRACTOR SHALL CALL "JULIE" AT 800-892-0123 FOR FIELD LOCATIONS OF BURIED ELECTRIC, TELEPHONE, AND GAS FACILITIES. (48 HOUR NOTIFICATION REQUIRED)
- THE CONTRACTOR SHALL COORDINATE CONSTRUCTION ACTIVITIES WITH UTILITY COMPANIES.
- THE CONTRACTOR WILL NOT BE ABLE TO SET UP A YARD OR FIELD OFFICE ON STATE PROPERTY WITHOUT WRITTEN PERMISSION FROM THE DEPARTMENT.
-
- WHEN MILLED PAVEMENT IS OPEN TO TRAFFIC THE MAXIMUM GRADE DIFFERENTIAL BETWEEN PASSES OF THE MILLING MACHINE SHALL NOT EXCEED 1/2 INCHES WHERE THE SPEED LIMIT IS 45 MPH OR LESS, AND 1 INCH WHERE THE SPEED LIMIT IS GREATER THAN 45 MPH. WITH WRITTEN APPROVAL FROM THE RESIDENT ENGINEER, A MAXIMUM GRADE DIFFERENTIAL OF 3 INCHES MAY BE ALLOWED IF THE EDGE OF THE MILLING IS SLOPED A MINIMUM 1:3 (V:H)
- BUTT JOINTS WILL BE INSTALLED AT THE ENDS OF ALL RESURFACING (WHERE RESURFACING MEETS EXISTING PAVEMENT), IN ACCORDANCE WITH THE "BUTT JOINT AND BITUMINOUS TAPER DETAILS" SHEET INCLUDED IN THE PLANS, UNLESS OTHERWISE SPECIFIED.
- CONTACT SCOTT KUZNICKI AREA TRAFFIC FIELD ENGINEER AT (708) 524-2145 TWO WEEKS PRIOR TO INSTALLATION OF FINAL PAVEMENT MARKINGS

MIXTURE REQUIREMENTS

ITEM	AC TYPE	VOID	RAP %
POLYMERIZED LEVELING BINDER (MM), SUPERPAVE, IL-4.75, N50, 3/4"	SBS/SBR PG 76-28	2.5% @ 50 GYR	0
BITUMINOUS CONC. SURF. COURSE, SUPERPAVE, MIX "D", N50, 1 1/2"	PG 64-22	4% @ 50 GYR	15
CLASS D PATCHED, 10" (BINDER IL- 19.0 MM)	PG 64-22	4% @ 70 GYR	15
BITUMINOUS REPLACEMENT OVER PATCHES (BINDER IL - 19.0 MM)	PG 64-22	4% @ 70 GYR	15

NOTE: THE UNIT WEIGHT USED TO CALCULATE BIT.SFC. MIXTURE QUANTITIES IS 112 LBS/SQYD/IN

REVISIONS	
NAME	DATE
JA	4/12/05

ILLINOIS DEPARTMENT OF TRANSPORTATION
BUTTERFIELD RD.
 (US 122045 TO ST. CHARLES RD.)
INDEX OF SHEETS LIST OF STATE STANDARDS PLAN NOTES

SCALE: VERT. : NONE
 HORIZ. : NONE
 DATE :
 DRAWN BY: RK
 CHECKED BY: IR

SUMMARY OF QUANTITIES			URBAN TOTAL QUANTITIES	CONSTRUCTION TYPE CODE					SUMMARY OF QUANTITIES			URBAN TOTAL QUANTITIES	CONSTRUCTION TYPE CODE					
CODE NO	ITEM	UNIT		I000						CODE NO	ITEM		UNIT	I000				
40600200	BITUMINOUS MATERIALS (PRIME COAT)	TON	7	7														
40600300	AGGREGATE (PRIME COAT)	TON	33	33														
40600400	MIXTURE FOR CRACKS, JOINTS, AND FLANGEWAYS	TON	2	2														
40600895	CONSTRUCTING TEST STRIP	EACH	1	1														
40600980	BITUMINOUS SURFACE REMOVAL - BUTT JOINT	SQ YD	167	167														
40601000	BITUMINOUS REPLACEMENT OVER PATCHES	TON	162	162														
42001300	PROTECTIVE COAT	SQ YD	44	44														
44000030	BITUMINOUS SURFACE REMOVAL (VARIABLE DEPTH)	SQ YD	6566	6566														
44000118	BITUMINOUS REMOVAL OVER PATCHES 4 1/2"	SQ YD	643	643														
44001700	COMBINATION CONCRETE CURB AND GUTTER REMOVAL AND REPLACEMENT	FOOT	200	200														
44201761	CLASS D PATCHES, TYPE I, 10 INCH	SQ YD	25	25														
44201765	CLASS D PATCHES, TYPE II, 10 INCH	SQ YD	243	243														
44201769	CLASS D PATCHES, TYPE III, 10 INCH	SQ YD	40	40														
44201771	CLASS D PATCHES, TYPE IV, 10 INCH	SQ YD	250	250														
60250200	CATCH BASINS TO BE ADJUSTED	EACH	2	2														
60252800	CATCH BASINS TO BE RECONSTRUCTED	EACH	2	2														
60260100	INLETS TO BE ADJUSTED	EACH	1	1														
60260300	INLETS TO BE ADJUSTED WITH NEW TYPE 1 FRAME, OPEN LID	EACH	3	3														
60262700	INLETS TO BE RECONSTRUCTED	EACH	2	2														
60300310	FRAMES AND LIDS TO BE ADJUSTED (SPECIAL)	EACH	31	31														
60406000	FRAMES AND LIDS, TYPE 1, OPEN LID	EACH	2	2														
67000400	ENGINEER'S FIELD OFFICE, TYPE A	CAL MO	3	3														
67100100	MOBILIZATION	L SUM	1	1														
70100450	TRAFFIC CONTROL AND PROTECTION, STANDARD 701201	L SUM	1	1														
70100460	TRAFFIC CONTROL AND PROTECTION, STANDARD 701306	L SUM	1	1														
70102620	TRAFFIC CONTROL AND PROTECTION, STANDARD 701501	L SUM	1	1														
70102625	TRAFFIC CONTROL AND PROTECTION, STANDARD 701606	L SUM	1	1														
70102635	TRAFFIC CONTROL AND PROTECTION, STANDARD 701701	L SUM	1	1														
70103815	TRAFFIC CONTROL SURVEILLANCE	CAL DA	5	5														
70300100	SHORT-TERM PAVEMENT MARKING	FOOT	1450	1450														
70300220	TEMPORARY PAVEMENT MARKING - LINE 4"	FOOT	4787	4787														
70300240	TEMPORARY PAVEMENT MARKING - LINE 6"	FOOT	506	506														
70300250	TEMPORARY PAVEMENT MARKING - LINE 8"	FOOT	522	522														
70300280	TEMPORARY PAVEMENT MARKING - LINE 24"	FOOT	170	170														
* 78000200	THERMOPLASTIC PAVEMENT MARKING - LINE 4"	FOOT	4787	4787														
* 78000400	THERMOPLASTIC PAVEMENT MARKING - LINE 6"	FOOT	506	506														
* 78000500	THERMOPLASTIC PAVEMENT MARKING - LINE 8"	FOOT	522	522														
* 78000650	THERMOPLASTIC PAVEMENT MARKING - LINE 24"	FOOT	170	170														
* 78100100	RAISED REFLECTIVE PAVEMENT MARKER	EACH	125	125														
78300200	RAISED REFLECTIVE PAVEMENT MARKER REMOVAL	EACH	125	125														
X0322256	TEMPORARY INFORMATION SIGNING	SQ FT	51.4	51.4														
X4066424	BITUMINOUS CONCRETE SURFACE COURSE, SUPERPAVE, MIX "D", N50	TON	1378	1378														
X4067100	POLYMERIZED LEVELING BINDER (MACHINE METHOD), SUPERPAVE, IL-4.75, N50	TON	418	418														
X4409410	BITUMINOUS SURFACE REMOVAL 2 1/4"	SQ YD	9954	9954														
Z0018500	DRAINAGE STRUCTURES TO BE CLEANED	EACH	13	13														
70301000	WORKZONE PAVEMENT MARKING REMOVAL	SQ FT	3020	3020														
70102620	TRAFFIC CONTROL AND PROTECTION, STANDARD 701501	L SUM	1	1														

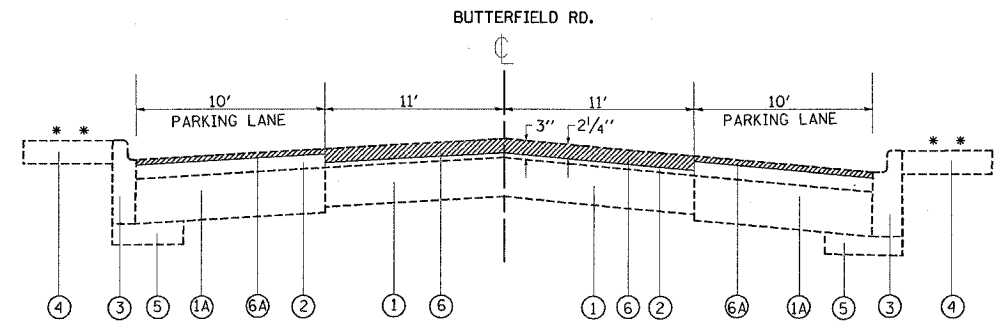
* SPECIALTY ITEMS

REVISIONS	
NAME	DATE
JA	4/12/05

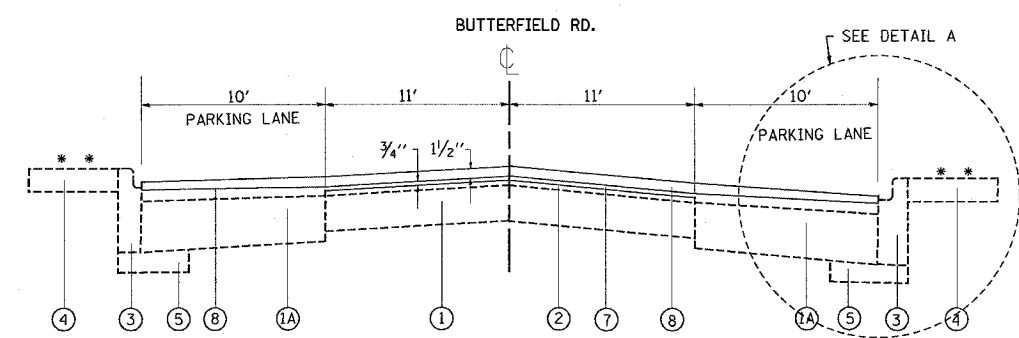
ILLINOIS DEPARTMENT OF TRANSPORTATION
SUMMARY OF QUANTITIES

4/12/2005 11:04:00 AM

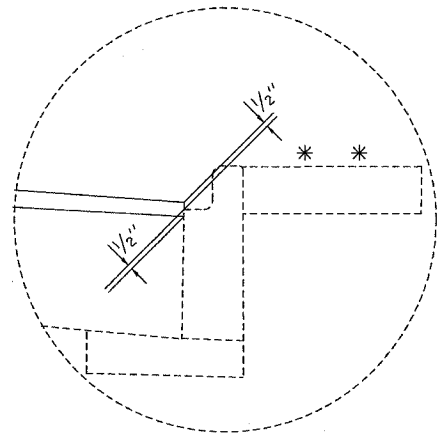
CONTRACT NO 62920				
F.A.U.	SECTION	COUNTY	TOTAL SHEETS	SHEET NO.
3545	0303.1 RS	COOK	15	4
STA. 13+ 57		TO STA. 46+ 54		
FED. ROAD DIST. NO. 1 ILLINOIS FED. AID PROJECT				



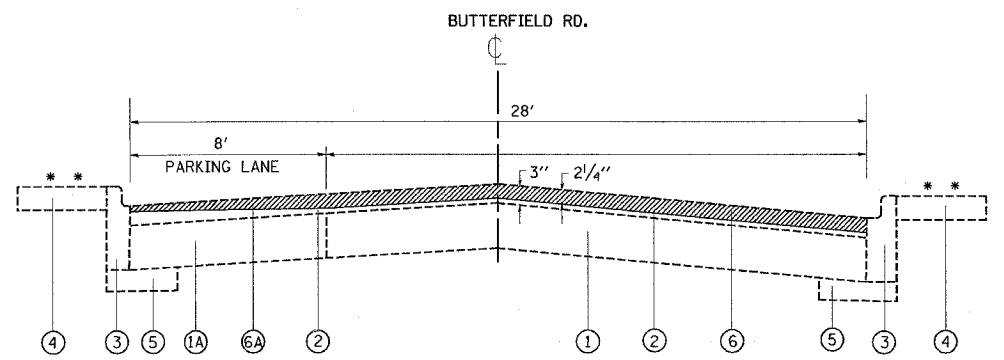
EXISTING TYPICAL SECTION
STA 13+57 TO STA 41+00



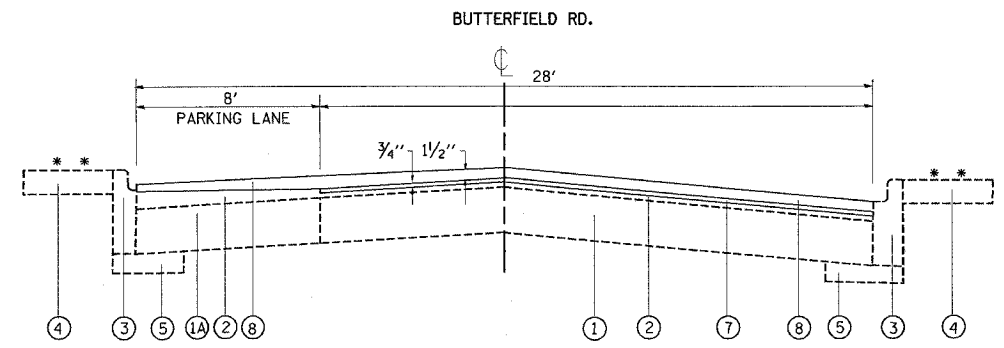
PROPOSED TYPICAL SECTION
STA 13+57 TO STA 41+00



DETAIL A



EXISTING TYPICAL SECTION
STA 41+00 TO STA 46+54



PROPOSED TYPICAL SECTION
STA 41+00 TO STA 46+54

LEGEND

- ① EXISTING PCC PAVEMENT 7"
- ①A EXISTING BITUMINOUS BASE COURSE 10"
- ② EXISTING BITUMINOUS SURFACE (AFTER MILLING)
- ③ EXISTING COMB. CONC. CURB AND GUTTER
- ④ EXISTING PCC SIDEWALK
- ⑤ EXISTING SUBBASE GRANULAR MATERIAL TYPE A
- ⑥ PROPOSED BITUMINOUS SURFACE REMOVAL (2 1/4")
- ⑥A PROPOSED BITUMINOUS SURFACE REMOVAL VARIABLE DEPTH (1 1/2" TO 1")
- ⑦ PROPOSED POLYMERIZED LEVELING BINDER (MACHINE METHOD), SUPERPAVE, IL-4.75 N50 (3/4")
- ⑧ PROPOSED BITUMINOUS CONCRETE SURFACE COURSE, SUPERPAVE, MIX "D", N50 (1 1/2")

REMOVAL

* * LOCATIONS VARIES

REVISIONS	
NAME	DATE

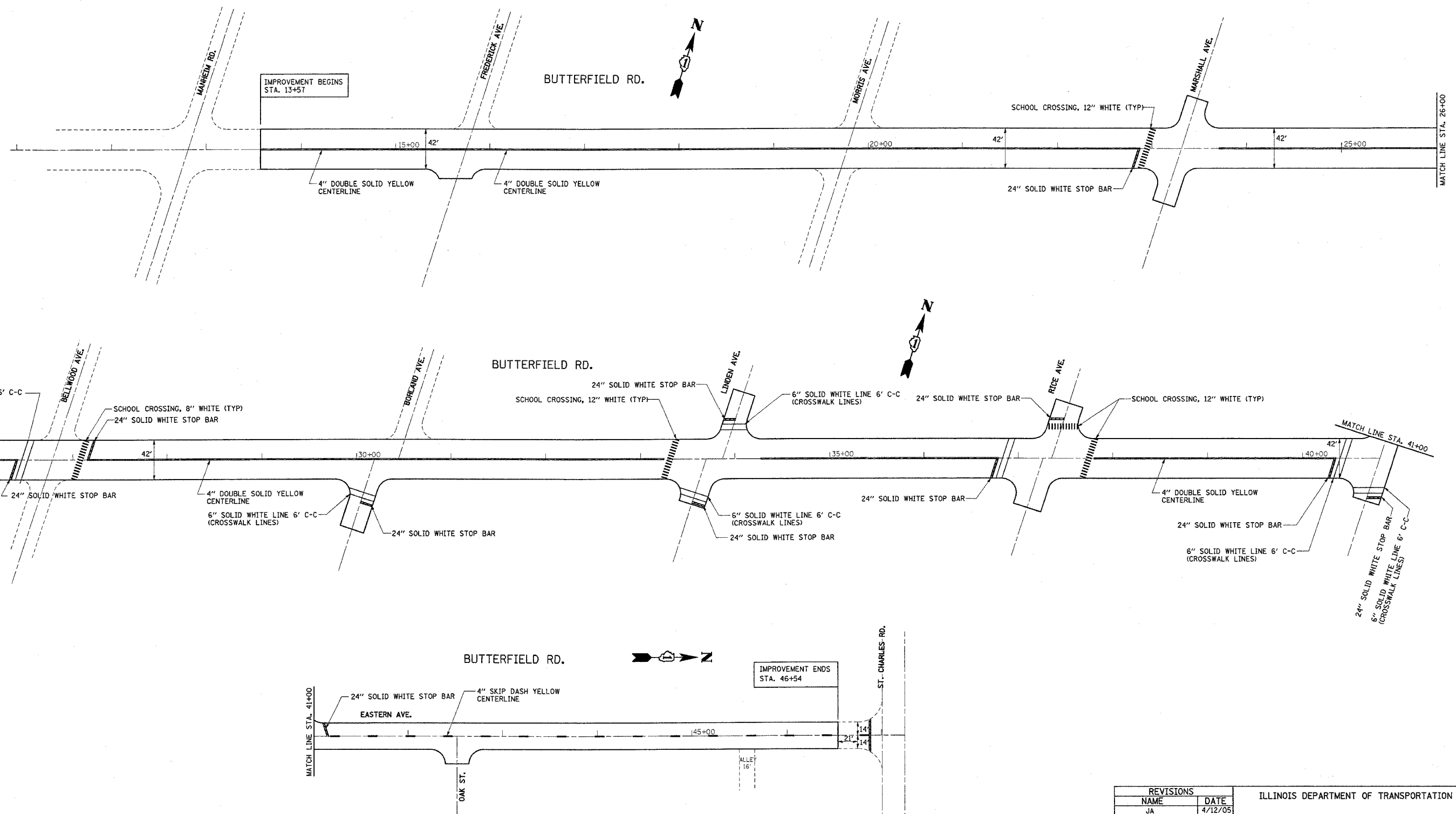
ILLINOIS DEPARTMENT OF TRANSPORTATION
BUTTERFIELD ROAD
(US 1220/45 TO ST. CHARLES RD.)
EXISTING AND PROPOSED
TYPICAL SECTIONS

SCALE: VERT. NONE
HORIZ. NONE

DATE: _____ DRAWN BY: JA
CHECKED BY: _____

05/06/2005

CONTRACT NO.: 62920			R	
FAU	SECTION	COUNTY	TOTAL SHEETS	SHEET NO.
3545	0303.1 RS	COOK	15	5
STA. 13+57		TO STA. 46+54		
FED. ROAD DIST. NO. 1 ILLINOIS FED. AID PROJECT				



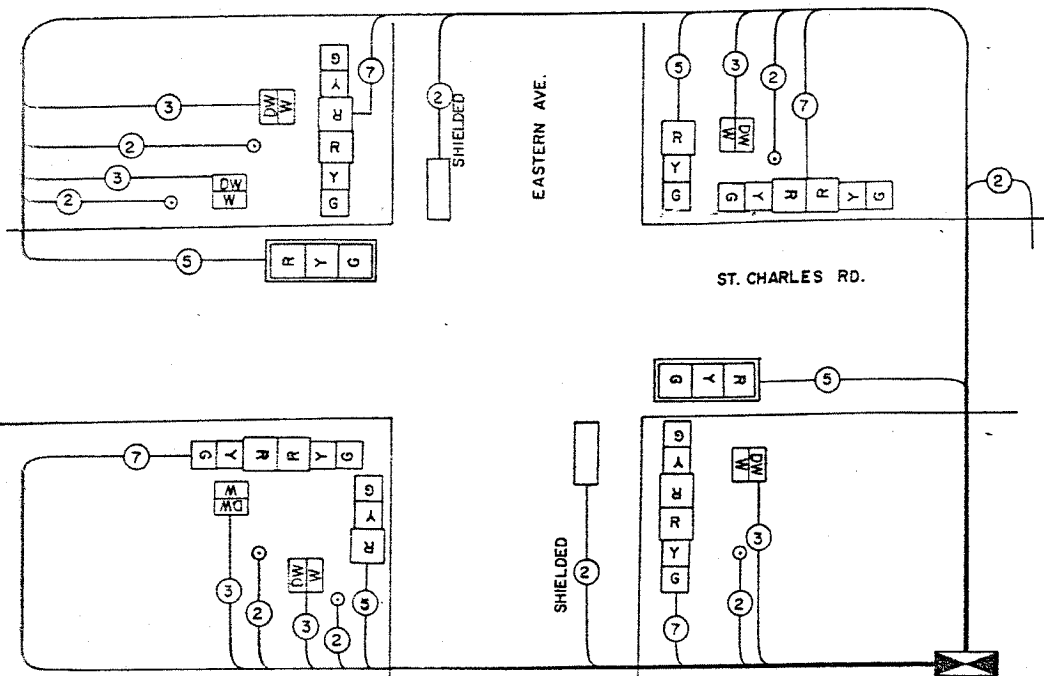
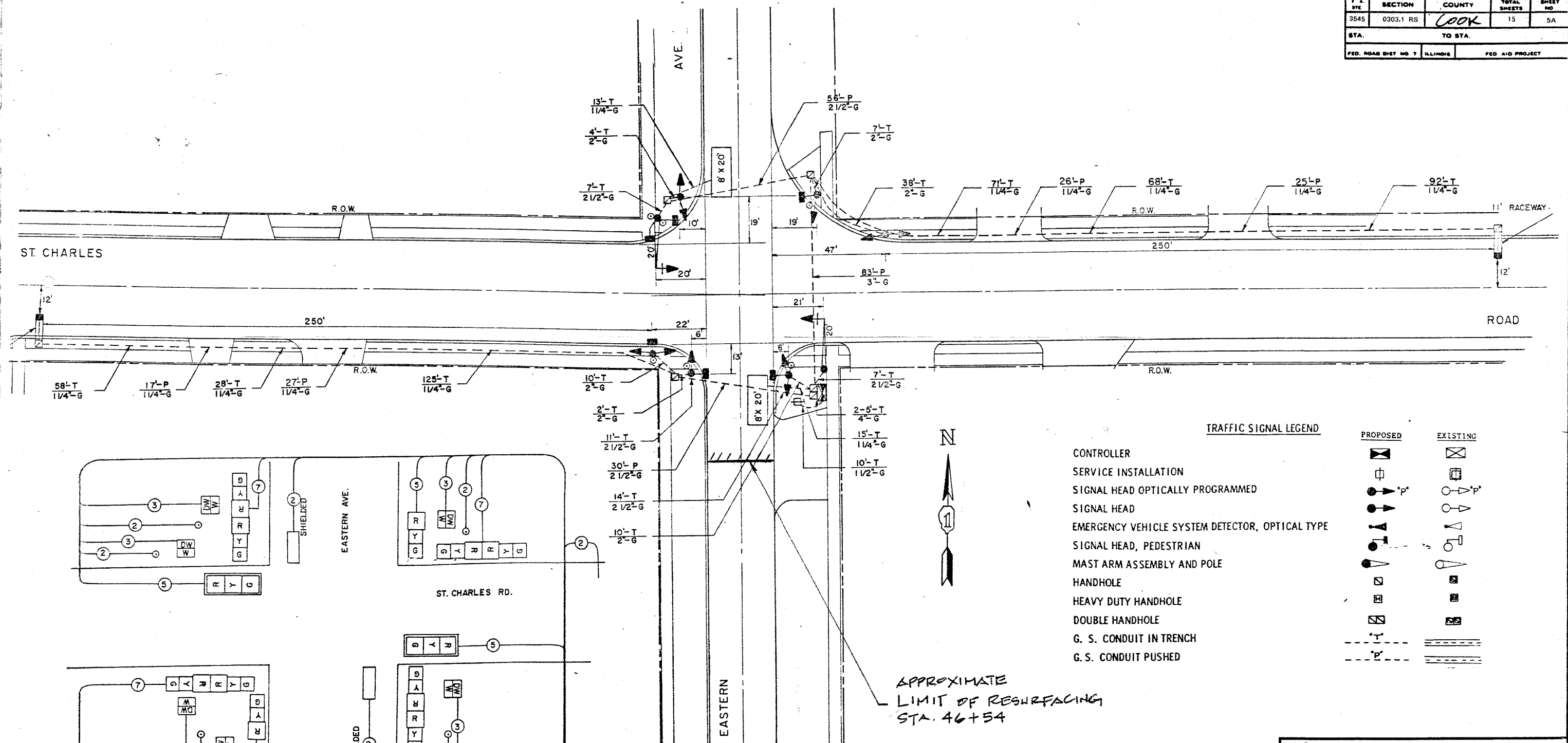
REVISIONS	
NAME	DATE
JA	4/12/05

ILLINOIS DEPARTMENT OF TRANSPORTATION
BUTTERFIELD ROAD
 (US 12/2045 - ST. CHARLES RD.)
 EXISTING AND PROPOSED ROADWAY
 AND PAVEMENT MARKING PLANS

SCALE: VERT. : NONE
 HORIZ. : NONE
 DATE: _____
 DRAWN BY: RK
 CHECKED BY: IR

4/12/2005
 c:\projects\104304\104304a.m32
 V1-B07

STATE	SECTION	COUNTY	TOTAL SHEETS	SHEET NO.
3545	0303.1 RS	COOK	15	5A
STA.		TO STA.		
FED. ROAD DIST. NO. 7		ILLINOIS		FED. AID PROJECT



CABLE PLAN

TRAFFIC SIGNAL LEGEND

	PROPOSED	EXISTING
CONTROLLER	[Symbol]	[Symbol]
SERVICE INSTALLATION	[Symbol]	[Symbol]
SIGNAL HEAD OPTICALLY PROGRAMMED	[Symbol]	[Symbol]
SIGNAL HEAD	[Symbol]	[Symbol]
EMERGENCY VEHICLE SYSTEM DETECTOR, OPTICAL TYPE	[Symbol]	[Symbol]
SIGNAL HEAD, PEDESTRIAN	[Symbol]	[Symbol]
MAST ARM ASSEMBLY AND POLE	[Symbol]	[Symbol]
HANDHOLE	[Symbol]	[Symbol]
HEAVY DUTY HANDHOLE	[Symbol]	[Symbol]
DOUBLE HANDHOLE	[Symbol]	[Symbol]
G. S. CONDUIT IN TRENCH	[Symbol]	[Symbol]
G. S. CONDUIT PUSHED	[Symbol]	[Symbol]

APPROXIMATE
LIMIT OF RESURFACING
STA. 46+54

FOR INFORMATION ONLY

NOTE:
THIS PLAN IS FOR THE PURPOSE OF REPLACING THE DETECTOR LOOPS ONLY. ALL OTHER INFORMATION SHOWN IS NOT RELATED AND WILL BE DISREGARDED.

REPLACE ALL DETECTOR LOOPS AS SHOWN
(WITHIN THE RESURFACING LIMITS)

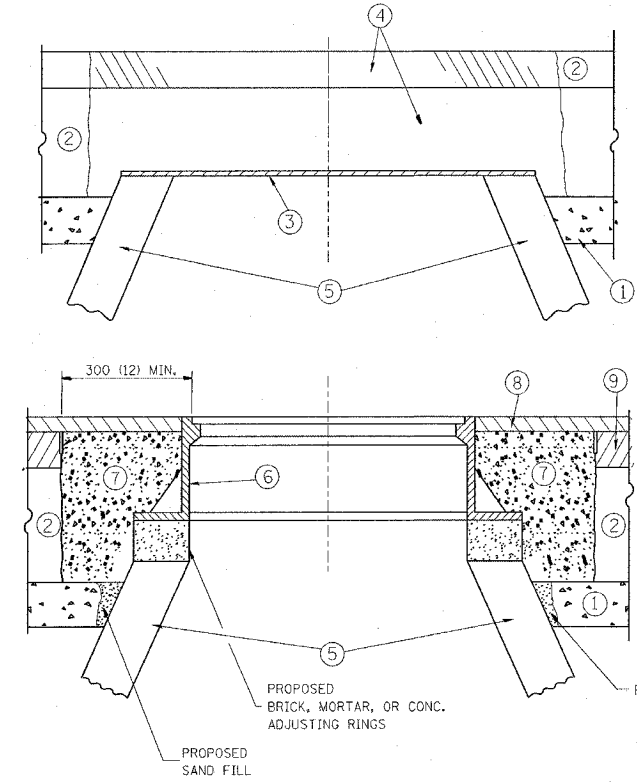
CODE NO.	QUANTITY	UNIT	ITEM
86600600	- 0 -	Foot	Detector Loop Replacement

REVISIONS	
NAME	DATE

ILLINOIS DEPARTMENT OF TRANSPORTATION
DETECTOR LOOP REPLACEMENT
ST. CHARLES RD. @ EASTERN AVE.
SCALE: 1" = 20'
DATE: APRIL 2005
DRAWN BY: JHE
DESIGNED BY: JHE
CHECKED BY: JHE

62920

F. A. RTE.	SECTION	COUNTY	TOTAL SHEETS	SHEET NO.
3545	0303.1 RS	COOK	15	6
STA.		TO STA.		
FED. ROAD DIST. NO.	ILLINOIS	FED. AID PROJECT		



CONSTRUCTION PROCEDURES

STAGE 1 (BEFORE PAVEMENT MILLING)

- A) REMOVE A MINIMUM OF 300 (12) OF THE PAVEMENT FROM AROUND THE STRUCTURE.
- B) REMOVE THE EXISTING FRAME AND LID FROM THE STRUCTURE.
- C) COVER THE STRUCTURE OPENING WITH A 900 (36) DIAMETER METAL PLATE.
- D) BACKFILL WITH CRUSHED STONE AND A MINIMUM 40 (1 1/2) THICK BITUMINOUS MATERIAL APPROVED BY THE ENGINEER.

STAGE 2 (AFTER PAVEMENT MILLING)

- A) REMOVE THE BITUMINOUS MATERIAL AND CRUSHED STONE.
- B) INSTALL THE FRAME AND LID; ADJUST THE FRAME TO ITS FINAL SURFACE ELEVATION.
- C) THE SURROUNDING SPACE SHALL BE FILLED WITH CLASS SI CONCRETE, OR BITUMINOUS CONCRETE SURFACE OR BINDER COURSE MATERIAL TO THE ELEVATION OF THE SURFACE OF THE EXISTING BASE COURSE OR THE BINDER COURSE.

THE PROCEDURE EXPLAINED ABOVE SHALL CONFORM TO THE APPLICABLE PORTIONS OF SECTIONS 353, 406, 602, AND 603 OF THE STANDARD SPECIFICATIONS.

LEGEND

- ① SUB-BASE GRANULAR MATERIAL
- ② EXISTING PAVEMENT
- ③ 900 (36) DIAMETER METAL PLATE
- ④ PROPOSED CRUSHED STONE AND BITUMINOUS MATERIAL
- ⑤ EXISTING STRUCTURE
- ⑥ FRAME AND LID (SEE NOTES)
- ⑦ CLASS SI CONCRETE, BITUMINOUS CONCRETE SURFACE OR BINDER COURSE MATERIAL
- ⑧ PROPOSED BITUMINOUS CONCRETE SURFACE COURSE
- ⑨ PROPOSED BITUMINOUS CONCRETE BINDER COURSE

NOTES:

EXISTING BROKEN FRAMES AND LIDS SHALL BE REMOVED AND DISPOSED OF BY THE CONTRACTOR AND SHALL BE REPLACED AS DIRECTED BY THE ENGINEER. REPLACEMENT FRAMES AND LIDS WILL BE PAID FOR IN ACCORDANCE WITH ARTICLE 109.04 OF THE STANDARD SPECIFICATIONS UNLESS A SEPARATE PAY ITEM HAS BEEN PROVIDED.

IF THE EXISTING LIDS ARE OPEN, THE FRAME WILL BE ADJUSTED TO THE ELEVATION OF THE MILLED PAVEMENT SURFACE PRIOR TO THE MILLING OPERATION. THE FRAME WILL NOT BE REMOVED AND COVERED BY THE METAL PLATE.

CITY OF CHICAGO CASTINGS ARE THE PROPERTY OF THE CITY AND THE CONTRACTOR SHALL NOTIFY THE CITY FOR REMOVAL AND DISPOSITION OF THE CASTINGS.

THE METAL PLATE USED TO COVER THE STRUCTURE SHALL REMAIN THE PROPERTY OF THE CONTRACTOR.

WHEN STRUCTURES ARE TO BE ADJUSTED OR RECONSTRUCTED, THE LOWERING AND RAISING OF THE FRAMES AND LIDS WILL NOT BE PAID FOR SEPARATELY BUT WILL BE INCLUDED IN THE COST OF THE CORRESPONDING PAY ITEM.

LOCATION OF STRUCTURES:

THE CONTRACTOR WILL BE REQUIRED TO KEEP A RECORD OF THE LOCATIONS OF THE BURIED STRUCTURES ACCORDING TO THE STATION AND DISTANCE LEFT OR RIGHT OF THE CENTERLINE OF PAVEMENT. UPON COMPLETION OF THE WORK, THE CONTRACTOR WILL DELIVER THE RECORD TO THE ENGINEER.

BASIS OF PAYMENT: FRAMES AND LIDS TO BE ADJUSTED, SPECIAL EACH

NEW FRAMES AND LIDS, WHEN SPECIFIED, WILL BE PAID FOR SEPARATELY.

DETAILS FOR FRAMES AND LIDS ADJUSTMENT WITH MILLING

ALL DIMENSIONS ARE IN MILLIMETERS (INCHES) UNLESS OTHERWISE SHOWN

REVISIONS	
NAME	DATE
R. SHAH	10/25/94
R. SHAH	01/30/95
R. SHAH	03/10/95
A. ABBAS	03/21/97
R. WIEDEMAN	05/14/04

ILLINOIS DEPARTMENT OF TRANSPORTATION

DETAILS FOR FRAMES AND LIDS ADJUSTMENT WITH MILLING

SCALE: NONE

DATE: 3/17/2005

DRAWN BY

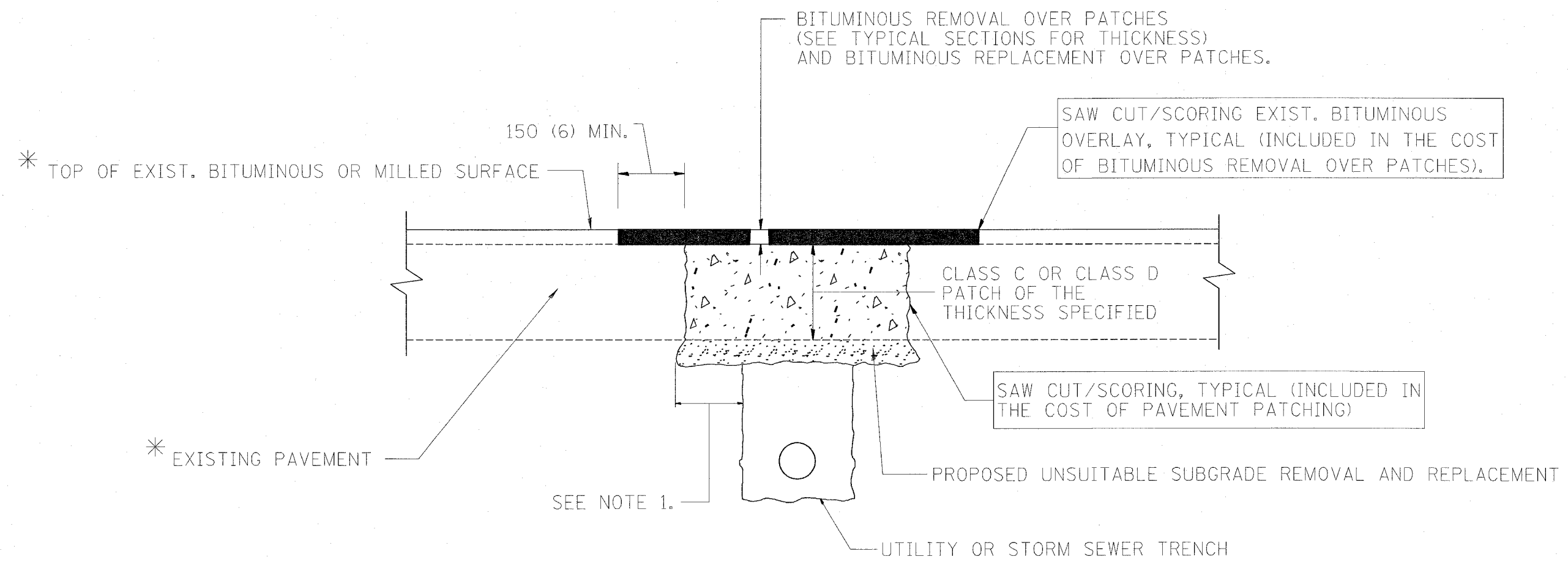
CHECKED BY

BD600-03 (BD-8)

REVISION DATE: 05/17/04

62920

F.A. RTE.	SECTION	COUNTY	TOTAL SHEETS	SHEET NO.
3545	0303.1 RS	COOK	15	7
STA.		TO STA.		
FED. ROAD DIST. NO.	ILLINOIS	FED. AID PROJECT		



* SEE TYPICAL SECTIONS FOR THICKNESS AND MATERIALS

NOTES:

1. THE WIDTH OF THE FULL DEPTH PATCH OVER A TRENCH SHALL BE 300 (12) WIDER ON EACH SIDE OF THE TRENCH.
2. FOR METHOD OF MEASUREMENT AND BASIS OF PAYMENT, SEE SPECIAL PROVISION "PATCHING WITH BITUMINOUS OVERLAY REMOVAL".

SEQUENCE OF CONSTRUCTION

1. REMOVE THE EXISTING BITUMINOUS MATERIAL OVER THE AREA TO BE PATCHED.
2. REMOVE AND REPLACE FULL DEPTH PATCHES
3. REPLACE BITUMINOUS MATERIAL OVER THE AREA TO BE PATCHED.

ALL DIMENSIONS ARE IN MILLIMETERS (INCHES) UNLESS OTHERWISE SHOWN.

REVISIONS	
NAME	DATE
R. SHAH	10/25/94
R. SHAH	01/14/95
R. SHAH	03/23/95
R. SHAH	04/24/95
A. HOUSEH	03/15/96
A. ABBAS	03/21/97
A. ABBAS	01/20/98
ART ABBAS	04/27/98

ILLINOIS DEPARTMENT OF TRANSPORTATION

PAVEMENT PATCHING FOR BITUMINOUS SURFACED PAVEMENT

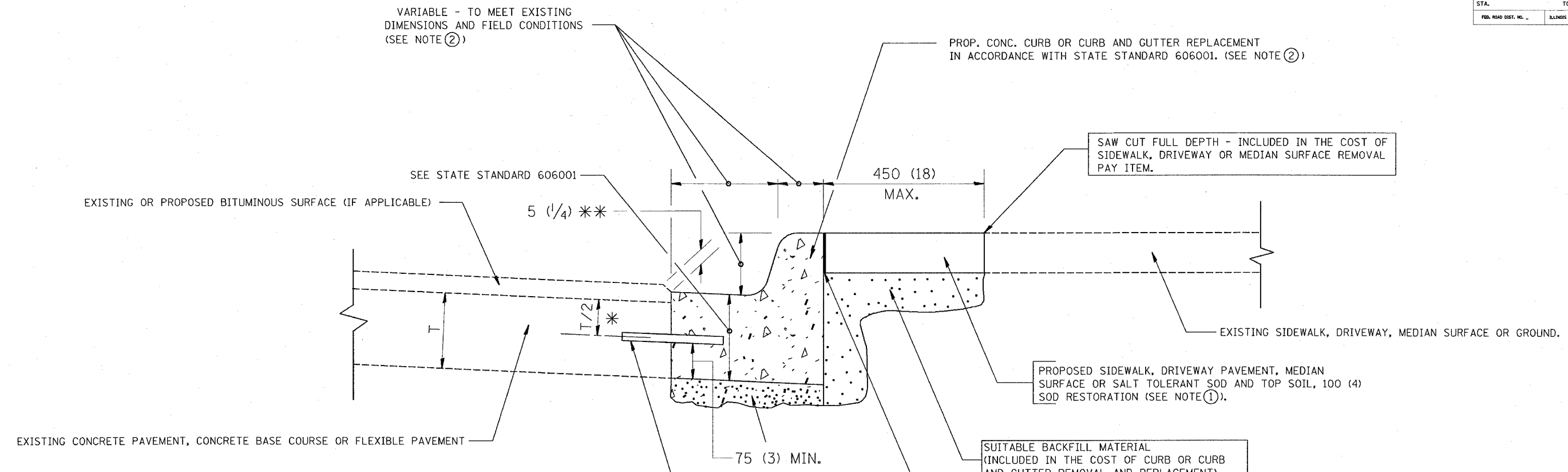
SCALE: VERT. DATE 3/17/2005

DRAWN BY CHECKED BY

BD400-04 (BD-22) REVISION DATE: 04/27/98

62920

F. A. RTE.	SECTION	COUNTY	TOTAL SHEETS	SHEET NO.
3545	0303.1 RS	COOK	15	8
STA.	TO STA.			
FED. ROAD DIST. NO.	ILLINOIS	FED. AID PROJECT		



VARIABLE - TO MEET EXISTING DIMENSIONS AND FIELD CONDITIONS (SEE NOTE ②)

PROP. CONC. CURB OR CURB AND GUTTER REPLACEMENT IN ACCORDANCE WITH STATE STANDARD 606001. (SEE NOTE ②)

SAW CUT FULL DEPTH - INCLUDED IN THE COST OF SIDEWALK, DRIVEWAY OR MEDIAN SURFACE REMOVAL PAY ITEM.

SEE STATE STANDARD 606001

450 (18) MAX.

EXISTING OR PROPOSED BITUMINOUS SURFACE (IF APPLICABLE)

5 (1/4) **

EXISTING SIDEWALK, DRIVEWAY, MEDIAN SURFACE OR GROUND.

PROPOSED SIDEWALK, DRIVEWAY PAVEMENT, MEDIAN SURFACE OR SALT TOLERANT SOD AND TOP SOIL, 100 (4) SOD RESTORATION (SEE NOTE ①).

EXISTING CONCRETE PAVEMENT, CONCRETE BASE COURSE OR FLEXIBLE PAVEMENT

75 (3) MIN.

SUITABLE BACKFILL MATERIAL (INCLUDED IN THE COST OF CURB OR CURB AND GUTTER REMOVAL AND REPLACEMENT)

PROPOSED 20 (3/4) PREFORMED EXPANSION JOINT AT CONCRETE SIDEWALKS, DRIVEWAYS, AND MEDIANS. (INCLUDED IN THE COST OF CURB OR CURB AND GUTTER REMOVAL AND REPLACEMENT.)

* 75 (3) MINIMUM FROM TOP AND BOTTOM OF THE CONCRETE PAVEMENT OR BASE COURSE.

** IF THE FINAL SURFACE OF THE PAVEMENT IS CONCRETE, THE GUTTER IS TO BE FLUSH WITH THE PAVEMENT.

NOTE: ① SIDEWALK, DRIVEWAY PAVEMENT OR MEDIAN SURFACE SHALL BE SIMILAR TO THE MATERIAL BEING REMOVED AND WILL BE PAID FOR SEPARATELY.

SALT TOLERANT SOD AND TOP SOIL, 100 (4) RESTORATION WILL NOT BE PAID FOR SEPARATELY, BUT SHALL BE INCLUDED IN THE COST OF CURB OR CURB AND GUTTER REMOVAL AND REPLACEMENT.

② CURB OR CURB AND GUTTER REPLACEMENT SHALL MATCH THE SHAPE OF THE EXISTING CURB OR CURB AND GUTTER UNLESS OTHERWISE SPECIFIED.

③ FOR CURB OR CURB AND GUTTER REMOVAL AND REPLACEMENT ADJACENT TO FLEXIBLE PAVEMENT DELETE EPOXY COATED TIE BARS.

④ LONGITUDINAL BARS, IF ENCOUNTERED IN THE EXISTING CURB OR CURB AND GUTTER, ARE NOT TO BE REPLACED. CUTTING AND REMOVING LONGITUDINAL BARS SHALL BE INCLUDED IN THE COST OF CURB OR CURB AND GUTTER REMOVAL AND REPLACEMENT.

⑤ THE COST OF BITUMINOUS SURFACE REMOVAL IN THE EXISTING GUTTER FLAG SHALL BE INCLUDED IN THE COST OF THE CURB AND GUTTER REMOVAL AND REPLACEMENT.

⑥ THE REMOVAL AND REPLACEMENT OF THE EXISTING CURB OR CURB AND GUTTER SHALL BE DONE IN ACCORDANCE WITH THE APPLICABLE PORTIONS OF SECTION 440 AND 606 OF THE STANDARD SPECIFICATIONS.

⑦ THE LOCATIONS OF REMOVAL AND REPLACEMENT OF EXISTING CURB OR CURB AND GUTTER SHALL BE DETERMINED BY THE RESIDENT ENGINEER AT THE TIME OF CONSTRUCTION.

UNSUITABLE SUB-BASE MATERIAL TO BE REMOVED, IF DIRECTED BY THE ENGINEER, SHALL BE REPLACED WITH EITHER SUB-BASE GRANULAR MATERIAL, TYPE B OR ADDITIONAL THICKNESS OF CONCRETE.

REMOVAL AND REPLACEMENT 100 (4) OR LESS IS INCLUDED IN THE COST OF CURB OR CURB AND GUTTER REMOVAL AND REPLACEMENT.

REMOVAL AND REPLACEMENT IN EXCESS OF 100 (4) WILL BE PAID FOR IN ACCORDANCE WITH ARTICLE 109.04 OF THE STANDARD SPECIFICATIONS.

PROPOSED NO. 20 (NO. 6) EPOXY COATED TIE BARS 600 (24) LONG AT 600 (24) CENTERS WILL NOT BE PAID FOR SEPARATELY. DELETE EPOXY COATED TIE BARS IF EXISTING TIE BARS ARE USABLE AS DETERMINED BY THE ENGINEER. (SEE NOTE ③).

BASIS OF PAYMENT:

THIS WORK WILL BE PAID FOR AT THE CONTRACT UNIT PRICE PER METER (FOOT) FOR "CURB REMOVAL AND REPLACEMENT" OR "COMBINATION CONCRETE CURB AND GUTTER REMOVAL AND REPLACEMENT".

ALL DIMENSIONS ARE IN MILLIMETERS (INCHES) UNLESS OTHERWISE SHOWN.

CURB OR CURB AND GUTTER REMOVAL AND REPLACEMENT

REVISIONS	
NAME	DATE
M. DE YONG	05/28/91
A. HOUSEH	03/11/94
R. SHAH	02/24/95
R. SHAH	03/02/95
R. SHAH	08/19/96
R. SHAH	09/12/96
R. SHAH	09/19/96
R. SHAH	10/03/96
A. ABBAS	03/21/97
M. GOMEZ	01/22/01

ILLINOIS DEPARTMENT OF TRANSPORTATION
CURB OR CURB AND GUTTER REMOVAL AND REPLACEMENT

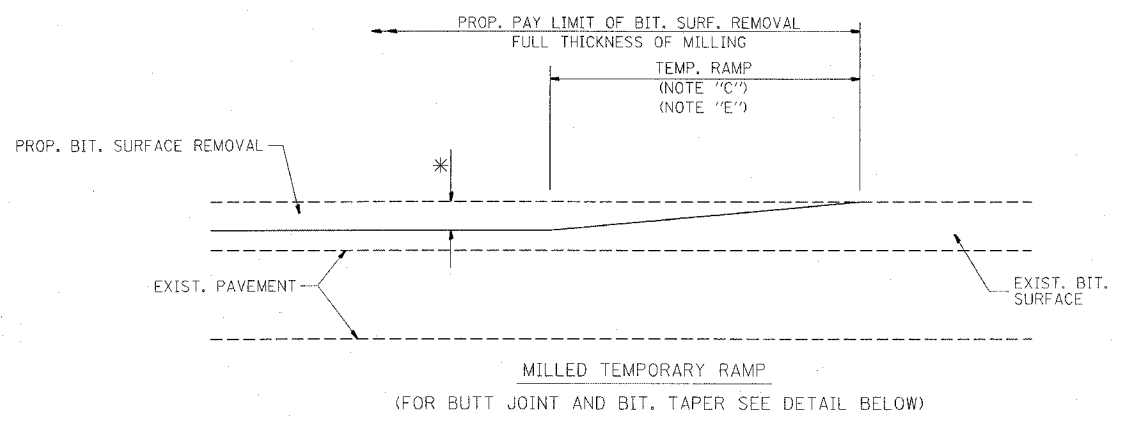
SCALE: NONE
DATE 3/17/2005

DRAWN BY
CHECKED BY
BD600-06 (BD-24)

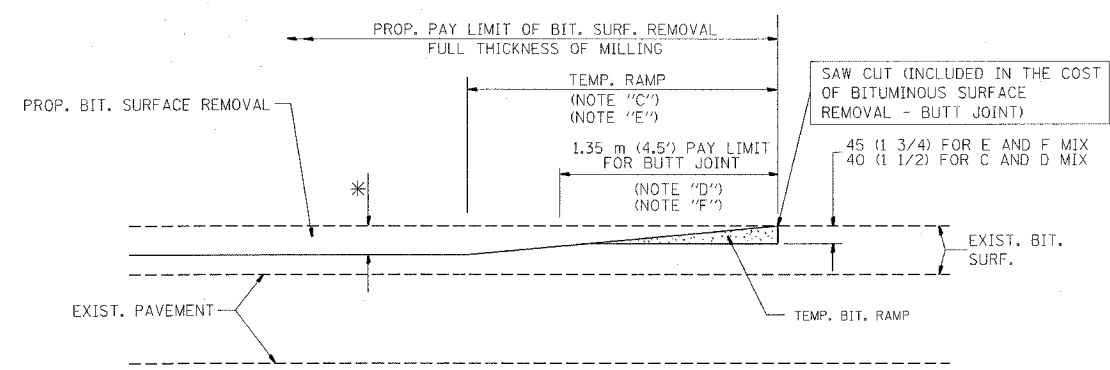
REVISION DATE: 12/06/BB

02920

F. A. DIST.	SECTION	COUNTY	TOTAL SHEETS	SHEET NO.
9545	0303.1 RS	COOK	15	9
STA.		TO STA.		
FED. ROAD DIST. NO.	ILLINOIS	FED. AID PROJECT		

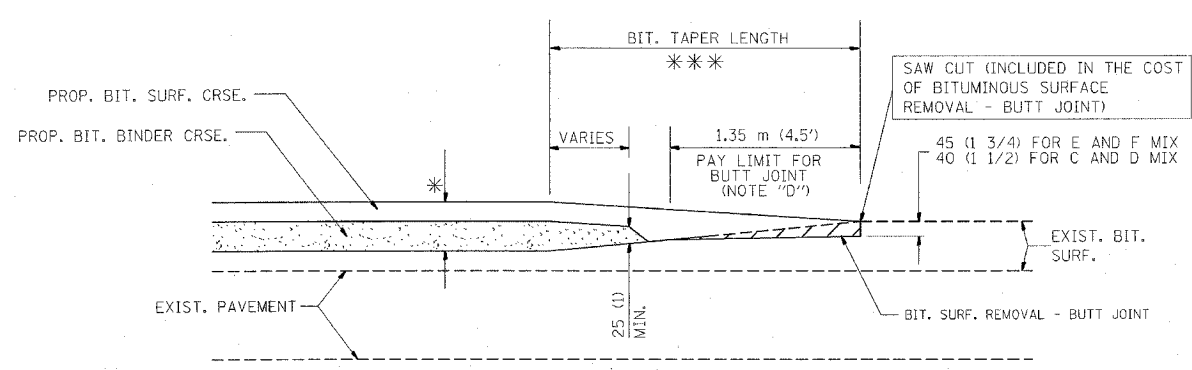


OPTION 1



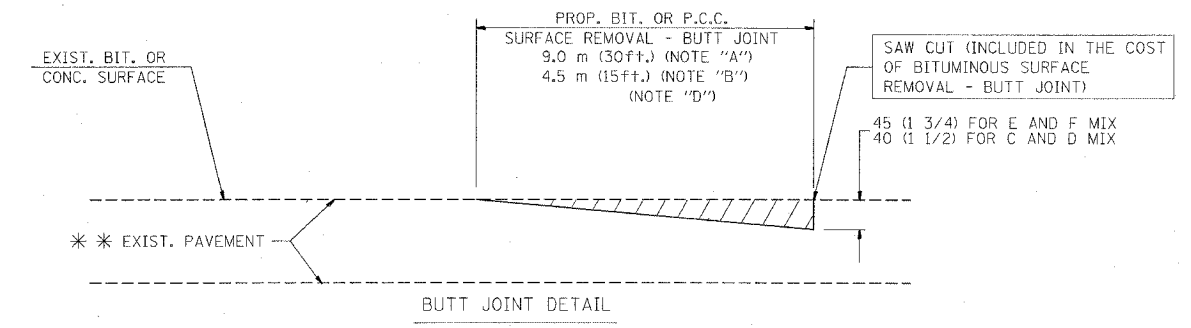
BITUMINOUS CONSTRUCTED TEMPORARY RAMP
(FOR BUTT JOINT AND BIT. TAPER SEE DETAIL BELOW)

OPTION 2
TYPICAL TEMPORARY RAMP

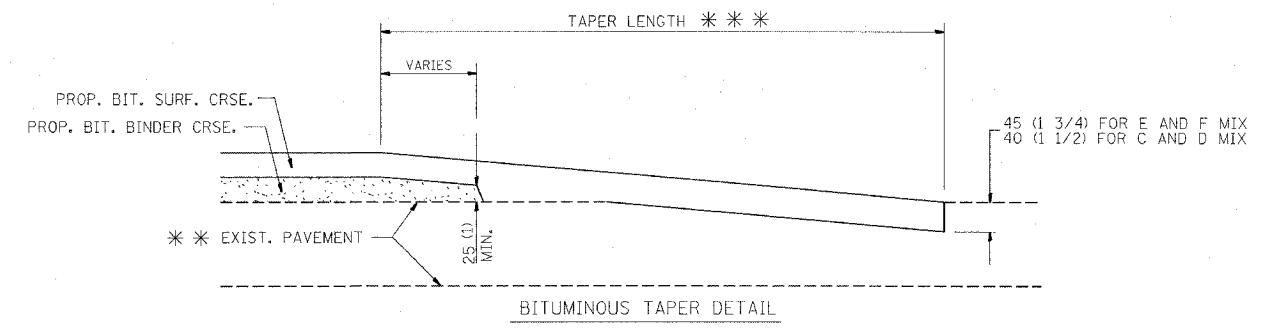


BUTT JOINT AND BITUMINOUS TAPER

TYPICAL BUTT JOINT AND BITUMINOUS TAPER
FOR MILLING AND RESURFACING



BUTT JOINT DETAIL



BITUMINOUS TAPER DETAIL

TYPICAL BUTT JOINT AND BITUMINOUS TAPER
FOR RESURFACING ONLY

*** PC CONCRETE, BITUMINOUS OR BITUMINOUS RESURFACED PAVEMENT.

NOTES

- A: MAINLINE ROADWAYS AND MAJOR SIDE ROADS.
 - B: MINOR SIDE ROADS.
 - C: THE TEMP. RAMP SHALL BE CONSTRUCTED IMMEDIATELY UPON REMOVAL OF THE EXISTING BITUMINOUS SURFACE.
 - D: THE BUTT JOINT SHALL BE CONSTRUCTED IMMEDIATELY PRIOR TO PLACING THE PROPOSED BITUMINOUS COURSES.
 - E: TAPER THE TEMP. RAMP AT A RATE OF 900 (3 ft.) PER INCH OF MILLING THICKNESS.
 - F: INSTALLATION AND REMOVAL OF THE 1.35 m (4.5') TEMP. BIT. RAMP WILL BE PAID AS "BITUMINOUS SURFACE REMOVAL - BUTT JOINT".
 - G: SEE ARTICLE 406.18 AND 406.24 OF THE STANDARD SPECIFICATIONS FOR "BITUMINOUS AND PCC SURFACE REMOVAL, BUTT JOINT".
- * SEE TYPICAL SECTIONS FOR MILLING THICKNESS.
- *** 6.1 m (20') PER 25 (1) RESURFACING (NOTE 'A')
3.0 m (10') PER 25 (1) RESURFACING (NOTE 'B')

ALL DIMENSIONS ARE IN MILLIMETERS (INCHES) UNLESS OTHERWISE SHOWN.

ILLINOIS DEPARTMENT OF TRANSPORTATION

BUTT JOINT AND BITUMINOUS TAPER DETAILS

BASIS OF PAYMENT:

THE BUTT JOINT WILL BE PAID FOR PER SQUARE METER (SQUARE YARD.) AS "BITUMINOUS SURFACE REMOVAL - BUTT JOINT" OR AS "PORTLAND CEMENT CONCRETE SURFACE REMOVAL - BUTT JOINT".

REVISIONS	
NAME	DATE
M. DE YONG	6-13-90
M. DE YONG	7-3-90
M. DE YONG	3-27-92
R. SHAH	09/09/94
R. SHAH	10/25/94
A. ABBAS	03/21/97
M. GOMEZ	04/06/01

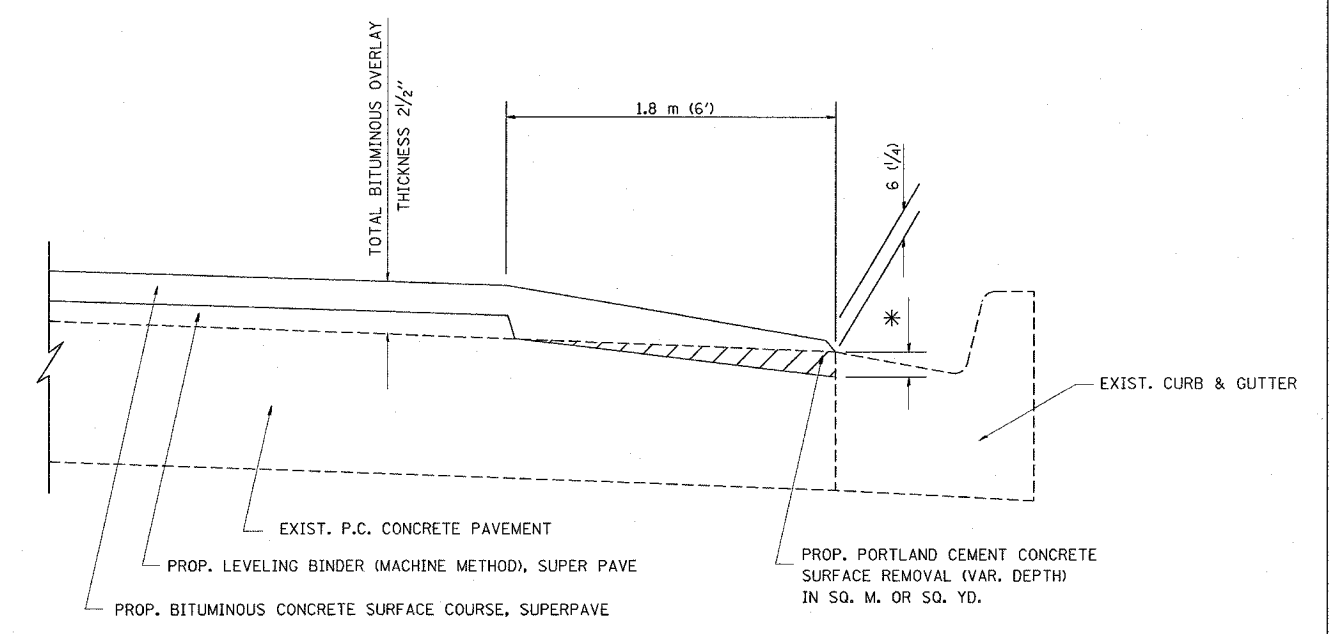
SCALE: NONE
DATE PLOTTED: 3/17/2005

DRAWN BY
CHECKED BY
BD400-05 (VI-BD32)

REVISION DATE: 04/06/01

62920

F. A. RTE.	SECTION	COUNTY	TOTAL SHEETS	SHEET NO.
3545	0303.1 RS	COOK	15	10
STA.		TO STA.		
FED. ROAD DIST. NO.		ILLINOIS	FED. AID PROJECT	



BITUMINOUS TAPER AT
EDGE OF P.C.C PAVEMENT

SUPERPAVE SURFACE MIX	LEVELING BINDER SUPERPAVE		* MILLING AT GUTTER FLAG
	THICKNESS	THICKNESS	
C OR D	38 (1 1/2)	25 (1)	33 (1 1/4)
E OR F	44 (1 3/4)	19 (3/4)	38 (1 1/2)

ALL DIMENSIONS ARE IN MILLIMETERS (INCHES) UNLESS OTHERWISE SHOWN.

ILLINOIS DEPARTMENT OF TRANSPORTATION

BITUMINOUS TAPER AT
EDGE OF P.C.C. PAVEMENT

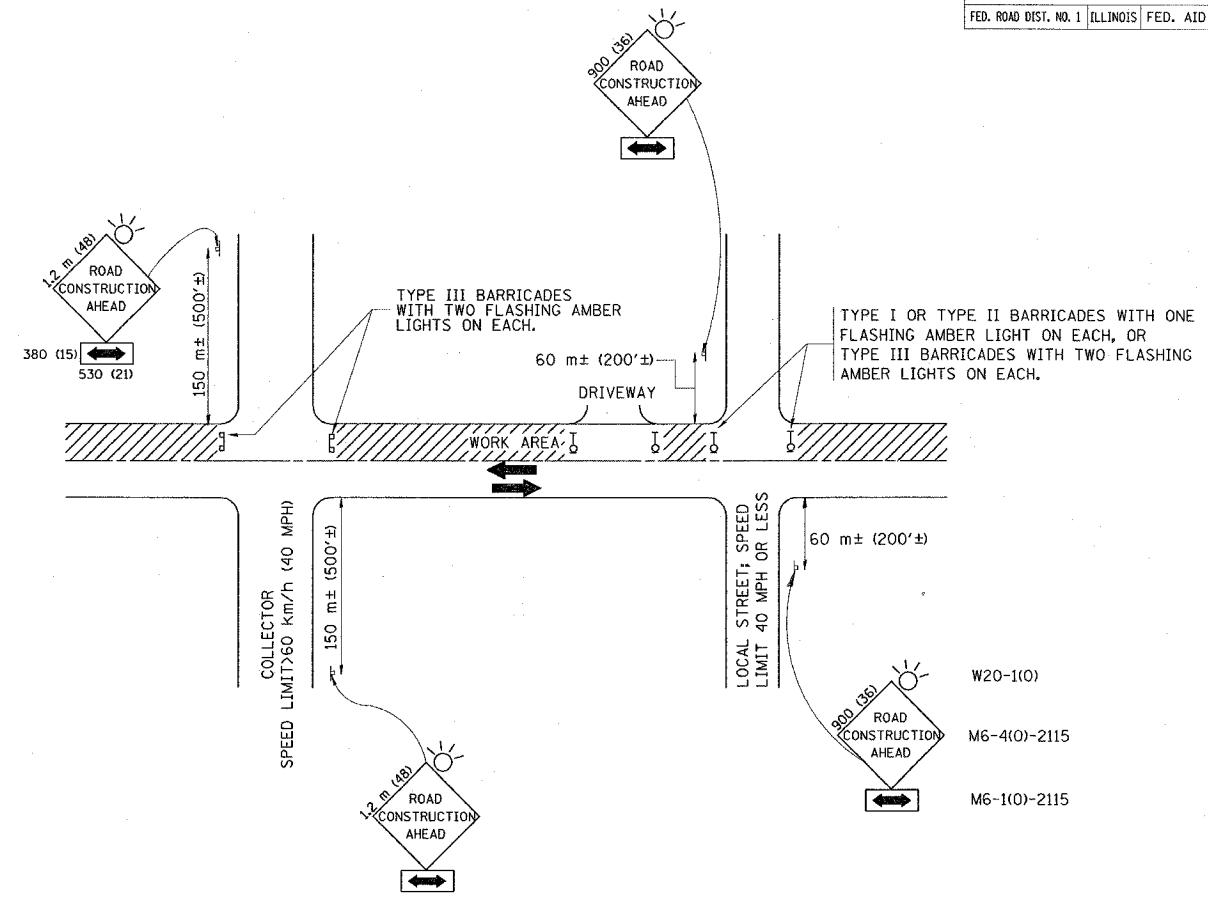
REVISIONS	
NAME	DATE
R. SHAH	09/10/94
R. SHAH	10/25/94
A. ABBAS	05/05/99
E. GOMEZ	12/21/00

SCALE: NONE
DATE 3/23/2005
DRAWN BY Jls
CHECKED BY A. ABBAS
BD400-06 (B033)

REVISION DATE: 12/21/00

62920

F.A. RTE.	SECTION	COUNTY	TOTAL SHEETS	SHEET NO.
3545	0303.1 RS	COOK	15	11
STA.		TO STA.		
FED. ROAD DIST. NO. 1		ILLINOIS FED. AID PROJECT		



- W20-1(0)
- M6-4(0)-2115
- M6-1(0)-2115

TRAFFIC CONTROL AND PROTECTION FOR SIDE ROADS, INTERSECTIONS, AND DRIVEWAYS

NOTES:

- A. FOR NO LANE RESTRICTION ON THE SIDE ROAD OR DRIVEWAYS**
1. SIDE ROAD WITH A SPEED LIMIT OF 60 km/h (40 MPH) OR LESS AS SHOWN ON THE DRAWING AND AS DIRECTED BY THE ENGINEER:
 - a) ONE **ROAD CONSTRUCTION AHEAD** SIGN 900x900 (36x36) WITH A FLASHER AND FLAG MOUNTED ON IT APPROXIMATELY 60 m (200') IN ADVANCE OF THE MAIN ROUTE.
 - b) THE CLOSED PORTION OF THE MAIN ROUTE SHALL BE PROTECTED BY BLOCKING WITH TYPE I, TYPE II OR TYPE III BARRICADES, 1/3 OF THE CROSS SECTION OF THE CLOSED PORTION.
 2. SIDE ROAD WITH A SPEED LIMIT GREATER THAN 60 km/h (40 MPH) AS SHOWN ON THE DRAWING AND AS DIRECTED BY THE ENGINEER:
 - a) ONE **ROAD CONSTRUCTION AHEAD** SIGN 1.2 m x 1.2 m (48x48) WITH A FLASHER MOUNTED ON IT APPROXIMATELY 150 m (500') IN ADVANCE OF THE MAIN ROUTE.
 - b) THE CLOSED PORTION OF THE MAIN ROUTE SHALL BE PROTECTED BY BLOCKING WITH TYPE III BARRICADES, 1/2 OF THE CROSS SECTION OF THE CLOSED PORTION.
 3. WHEN THE SIDE ROAD LIES BETWEEN THE BEGINNING OF THE MAINLINE SIGNING AND THE WORK ZONE, A SINGLE HEADED ARROW (M6-1) SHALL BE USED IN LIEU OF THE DOUBLE HEADED ARROW (M6-4).
- B. FOR A LANE CLOSURE ON A SIDE ROAD OR DRIVEWAY:**
- USE APPLICABLE PORTIONS OF THE TYPICAL APPLICATION OF TRAFFIC CONTROL DEVICES (STD. 701501, STD. 701606 OR THE APPROPRIATE STANDARD). THE SPACING OF SIGNS AND BARRICADES SHALL BE ADJUSTED FOR FIELD CONDITIONS AS DIRECTED BY THE ENGINEER. THE DIRECTIONAL ARROW SHALL BE COVERED OR REMOVED WHEN NO LONGER CONSISTENT WITH THE SIDE ROAD LANE CLOSURE.
- C. ADVANCE WARNING SIGNS ARE TO BE OMITTED ON DRIVEWAY UNLESS OTHERWISE NOTED.**
- D. THE TRAFFIC CONTROL AND PROTECTION FOR SIDE ROADS, INTERSECTIONS, AND DRIVEWAYS SHALL BE INCIDENTAL TO THE COST OF SPECIFIED TRAFFIC CONTROL STANDARDS OR ITEMS.**

REVISIONS	
NAME	DATE
LHA	6/89
T. RAMMACHER	09/08/94
J. OBERLE	10/18/95
A. HOUSEH	03/06/96
A. HOUSEH	10/15/96
T. RAMMACHER	01/06/00

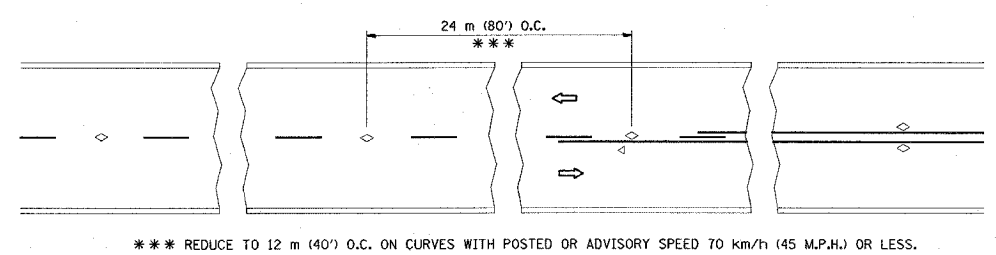
ILLINOIS DEPARTMENT OF TRANSPORTATION
TRAFFIC CONTROL AND PROTECTION FOR SIDE ROADS, INTERSECTIONS, AND DRIVEWAYS

SCALE: VERT. HORIZ. DATE 3/17/2005
 DRAWN BY CHECKED BY TC-10

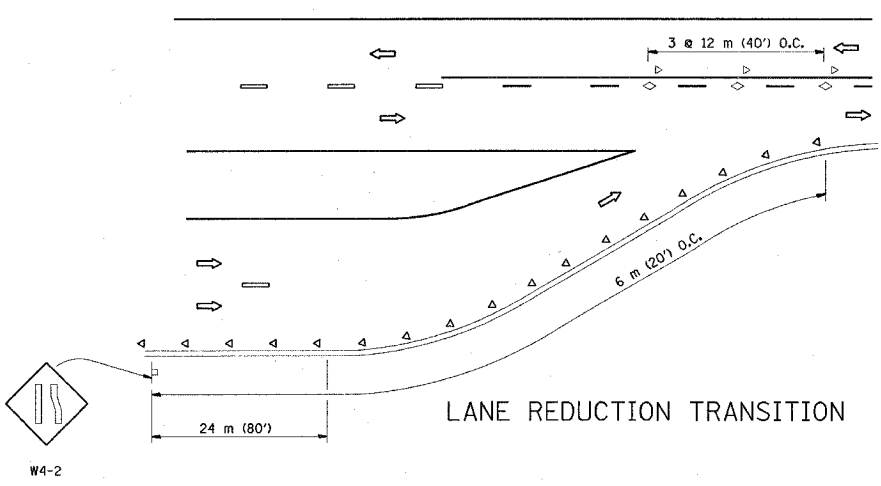
REVISION DATE: 01/06/00

62920

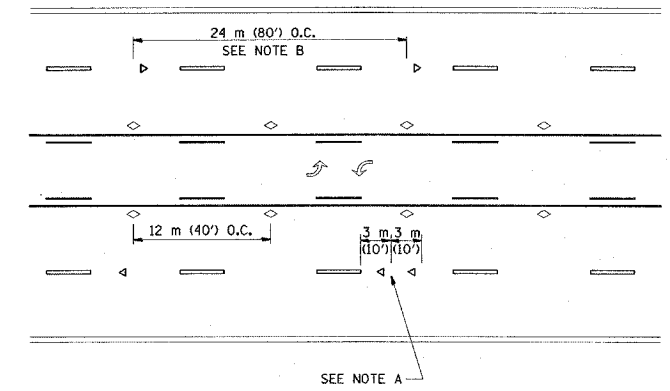
F. A. RTE.	SECTION	COUNTY	TOTAL SHEETS	SHEET NO.
3545	0303.1 RS	COOK	15	12
STA.		TO STA.		
FED. ROAD DIST. NO.		ILLINOIS	FED. AID PROJECT	



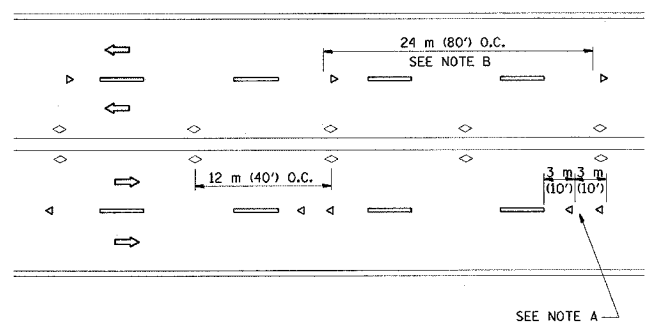
TWO-LANE/TWO-WAY



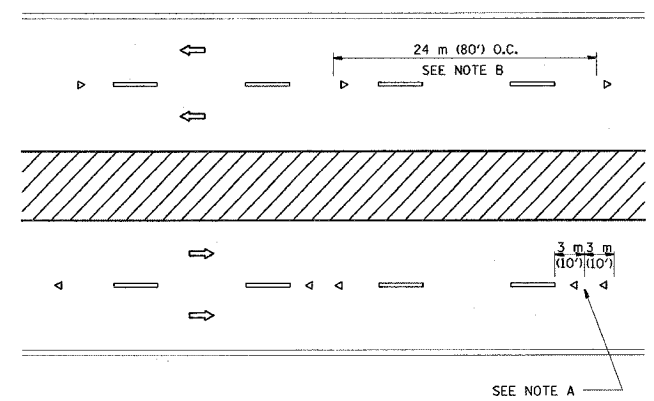
LANE REDUCTION TRANSITION



TWO-WAY LEFT TURN



MULTI-LANE/UNDIVIDED



MULTI-LANE/DIVIDED

GENERAL NOTES

1. MARKERS USED WITH DASHED LINES SHALL BE CENTERED IN THE GAP BETWEEN SEGMENTS.
2. MARKERS USED ADJACENT TO SOLID LINES SHALL BE OFFSET 50 TO 75 (2 TO 3) TOWARD TRAFFIC AS SHOWN.
3. MARKERS THROUGH TANGENTS LESS THAN 150 m (500') IN LENGTH BETWEEN CURVES SHALL BE INSTALLED AT THE LESSER OF THE TWO CURVE SPACINGS.

SYMBOLS

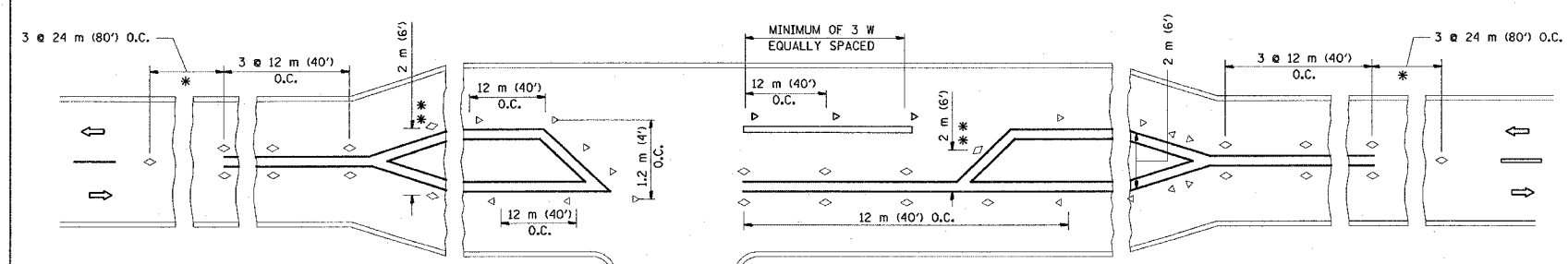
- YELLOW STRIPE
- WHITE STRIPE
- ◁ ONE-WAY AMBER MARKER
- ◁ ONE-WAY CRYSTAL MARKER (W/O)
- ◇ TWO-WAY AMBER MARKER

LANE MARKER NOTES

- B. REDUCE TO 12 m (40') O.C. ON CURVES WHERE ADVISORY SPEEDS ARE 20 km/h (10 M.P.H.) LOWER THAN POSTED SPEEDS.
- A. USE DOUBLE LANE LINE MARKERS SPACED AS SHOWN.

DESIGN NOTES

1. DOUBLE LANE LINE MARKERS SHALL BE USED UNLESS SPECIFIED OTHERWISE.
2. EXCEPT AS SHOWN ON THE LANE REDUCTION TRANSITION AND FREEWAY EXIT RAMP DETAIL, MARKERS ARE NOT TO BE SPECIFIED ON RIGHT EDGE LINES.
3. THE EXACT MARKER LIMITS, SPACING, AND COLOR SHOULD BE INCLUDED IN THE PLANS.
4. MARKERS SHOULD NOT BE USED ALONGSIDE CURBS EXCEPT FOR EXTREMELY SHORT SECTIONS OF CURBS WHERE NOT MORE THAN TWO MARKERS WOULD BE INVOLVED.



LEFT TURN

All dimensions are in millimeters (Inches) unless otherwise shown.

ILLINOIS DEPARTMENT OF TRANSPORTATION

TYPICAL APPLICATIONS
RAISED REFLECTIVE PAVEMENT MARKERS
(SNOW-PLOW RESISTANT)

REVISIONS	
NAME	DATE
T. RAMMACHER	09-19-94
T. RAMMACHER	03-12-99
T. RAMMACHER	01-06-00

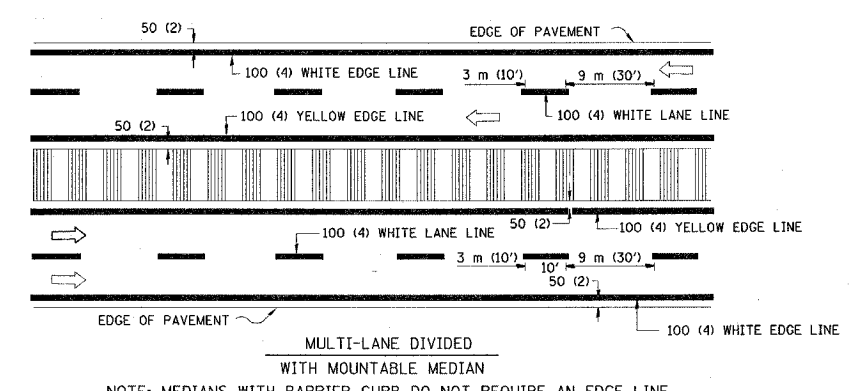
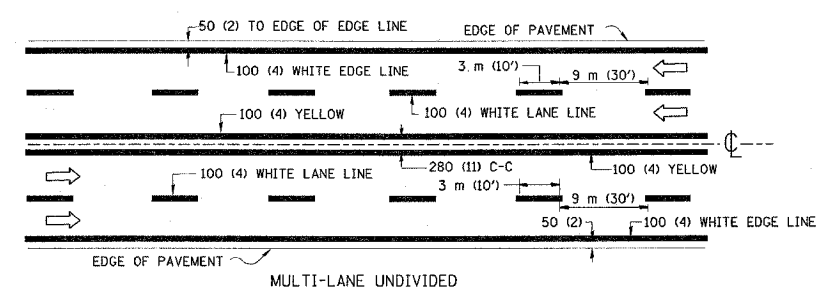
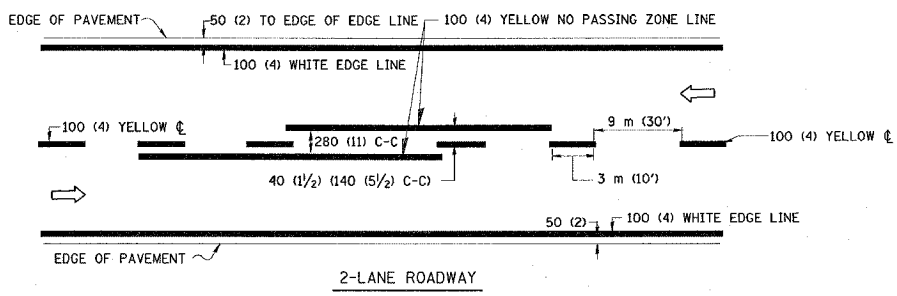
SCALE: NONE
DATE: 3/17/2005

DRAWN BY CADD
CHECKED BY
TC-11

REVISION DATE: 01/06/00

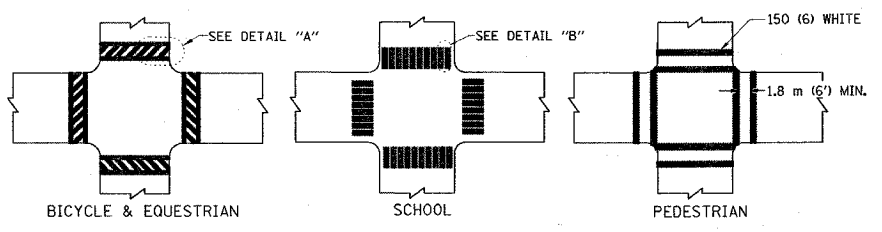
62920

F.A. SHEET	SECTION	COUNTY	TOTAL SHEETS	SHEET NO.
3545	0303.1 RS	COOK	15	13
STA.	TO STA.			
FED. ROAD DIST. NO.	ILLINOIS	FED. AID PROJECT		

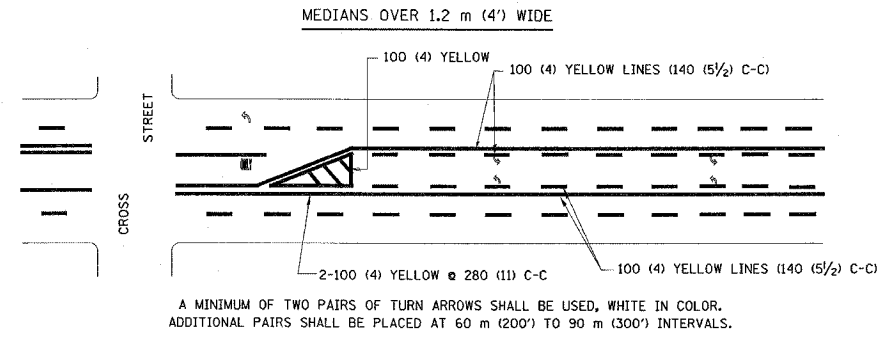
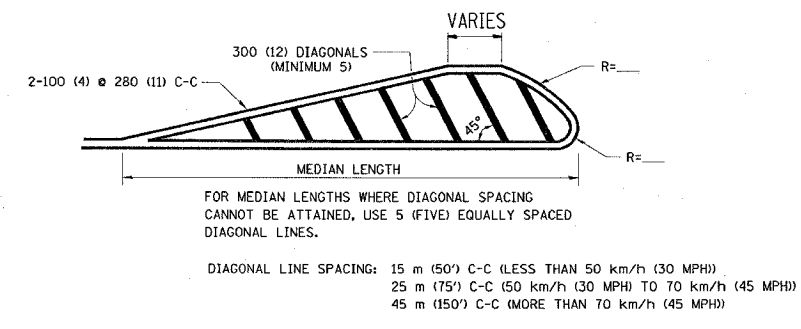
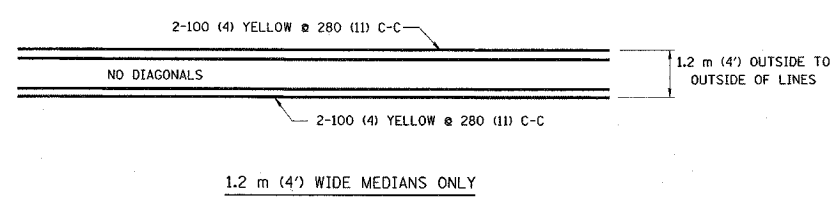


NOTE: MEDIANS WITH BARRIER CURB DO NOT REQUIRE AN EDGE LINE

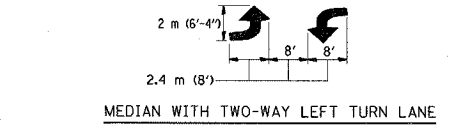
TYPICAL LANE AND EDGE LINE MARKING



TYPICAL CROSSWALK MARKING

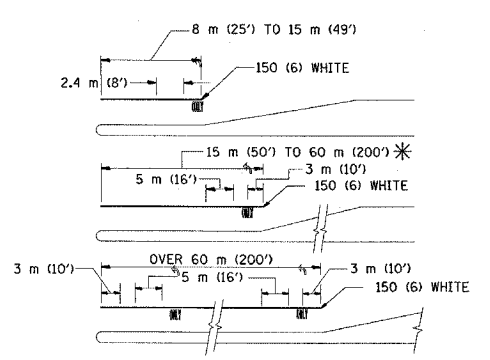


TYPICAL PAINTED MEDIAN MARKING



MEDIAN WITH TWO-WAY LEFT TURN LANE

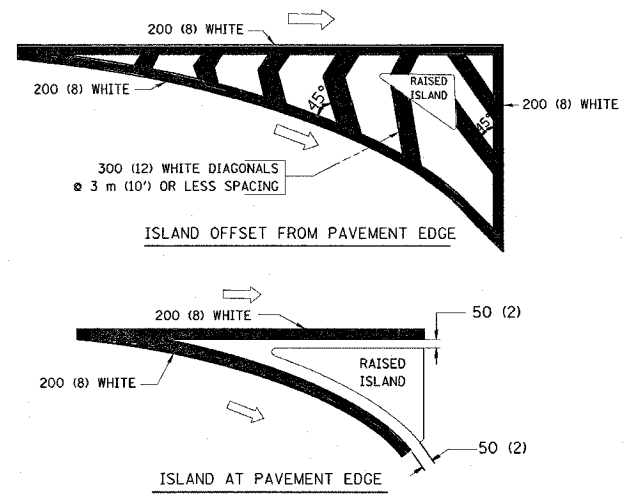
TYPICAL PAINTED MEDIAN MARKING



FULL SIZE LETTERS 2.4 m (8') AND ARROWS SHALL BE USED. AREA = 1.5 m² (15.6 SQ. FT.) ONLY AREA = 1.9 m² (20.8 SQ. FT.) * TURN LANES IN EXCESS OF 120 m (400') IN LENGTH MAY HAVE AN ADDITIONAL SET OF ARROW - "ONLY" INSTALLED MIDWAY BETWEEN THE OTHER TWO SETS OF ARROW - "ONLY".

TYPICAL LEFT (OR RIGHT) TURN LANE

TYPICAL TURN LANE MARKING



TYPICAL ISLAND MARKING

TYPE OF MARKING	WIDTH OF LINE	PATTERN	COLOR	SPACING / REMARKS
CENTERLINE ON 2 LANE PAVEMENT	100 (4)	SKIP-DASH	YELLOW	3 m (10') LINE WITH 9 m (30') SPACE
CENTERLINE ON MULTI-LANE UNDIVIDED PAVEMENT	2 @ 100 (4)	SOLID	YELLOW	280 (11) C-C
NO PASSING ZONE LINES: FOR ONE DIRECTION FOR BOTH DIRECTIONS	100 (4) 2 @ 100 (4)	SOLID SOLID	YELLOW YELLOW	140 (5 1/2) C-C FROM SKIP-DASH CENTERLINE 280 (11) C-C OMIT SKIP-DASH CENTERLINE BETWEEN
LANE LINES	100 (4) 125 (5) ON FREEWAYS	SKIP-DASH SKIP-DASH	WHITE WHITE	3 m (10') LINE WITH 9 m (30') SPACE
DOTTED LINES (EXTENSIONS OF CENTER, LANE OR TURN LANE MARKINGS)	SAME AS LINE BEING EXTENDED	SKIP-DASH	SAME AS LINE BEING EXTENDED	600 (2') LINE WITH 1.8 m (6') SPACE
EDGE LINES	100 (4)	SOLID	YELLOW-LEFT WHITE-RIGHT	OUTLINE MOUNTABLE MEDIANS IN YELLOW; EDGE LINES ARE NOT USED NEXT TO BARRIER CURB
TURN LANE MARKINGS	150 (6) LINE; FULL SIZE LETTERS & SYMBOLS (2.4 m (8'))	SOLID	WHITE	SEE TYPICAL TURN LANE MARKING DETAIL
TWO WAY LEFT TURN MARKING	2 @ 100 (4) EACH DIRECTION 2.4 m (8') LEFT ARROW	SKIP-DASH AND SOLID IN PAIRS	YELLOW WHITE	3 m (10') LINE WITH 9 m (30') SPACE FOR SKIP-DASH; 140 (5 1/2) C-C BETWEEN SOLID LINE AND SKIP-DASH LINE SEE TYPICAL TWO-WAY LEFT TURN MARKING DETAIL
CROSSWALK LINES (PEDESTRIAN) A. DIAGONALS (BIKE & EQUESTRIAN) B. LONGITUDINAL BARS (SCHOOL)	2 @ 150 (6) 300 (12) @ 45° 300 (12) @ 90°	SOLID SOLID SOLID	WHITE WHITE WHITE	NOT LESS THAN 1.8 m (6') APART 600 (2') APART 600 (2') APART SEE TYPICAL CROSSWALK MARKING DETAILS.
STOP LINES	600 (24)	SOLID	WHITE	PLACE 1.2 m (4') IN ADVANCE OF AND PARALLEL TO CROSSWALK, IF PRESENT. OTHERWISE, PLACE AT DESIRED STOPPING POINT. PARALLEL TO CROSSROAD CENTERLINE, WHERE POSSIBLE
PAINTED MEDIANS	2 @ 100 (4) WITH 300 (12) DIAGONALS @ 45° NO DIAGONALS USED FOR 1.2 m (4') WIDE MEDIANS	SOLID	YELLOW; TWO WAY TRAFFIC WHITE; ONE WAY TRAFFIC	280 (11) C-C FOR THE DOUBLE LINE SEE TYPICAL PAINTED MEDIAN MARKING.
GORE MARKING AND CHANNELIZING LINES	200 (8) WITH 300 (12) DIAGONALS @ 45°	SOLID	WHITE	DIAGONALS: 4.5 m (15') C-C (LESS THAN 50 km/h (30 MPH)) 6 m (20') C-C (50 km/h (30 MPH) TO 70 km/h (45 MPH)) 9 m (30') C-C (OVER 70 km/h (45 MPH))
RAILROAD CROSSING	600 (24) TRANSVERSE LINES; "RR" IS 1.8 m (6') LETTERS; 400 (16) LINE FOR "X"	SOLID	WHITE	SEE STATE STANDARD 780001 AREA OF: "R"=0.33m ² (3.6 SQ. FT.) EACH "X"=5.0 m ² (54.0 SQ. FT.)
SHOULDER DIAGONALS	300 (12) @ 45°	SOLID	WHITE - RIGHT YELLOW - LEFT	15 m (50') C-C (LESS THAN 50 km/h (30 MPH)) 25 m (75') C-C (50 km/h (30 MPH) TO 70 km/h (45 MPH)) 45 m (150') C-C (OVER 70 km/h (45 MPH))

FOR FURTHER DETAILS ON PAVEMENT MARKING REFER TO STANDARD SPECIFICATIONS FOR ROAD AND BRIDGE CONSTRUCTION AND STATE STANDARD 780001.

All dimensions are in millimeters (inches) unless otherwise shown.

REVISIONS	
NAME	DATE
EVERS	03-19-90
T. RAMMACHER	10-27-94
ALEX HOUSEH	10-09-96
ALEX HOUSEH	10-17-96
T. RAMMACHER	01-06-00

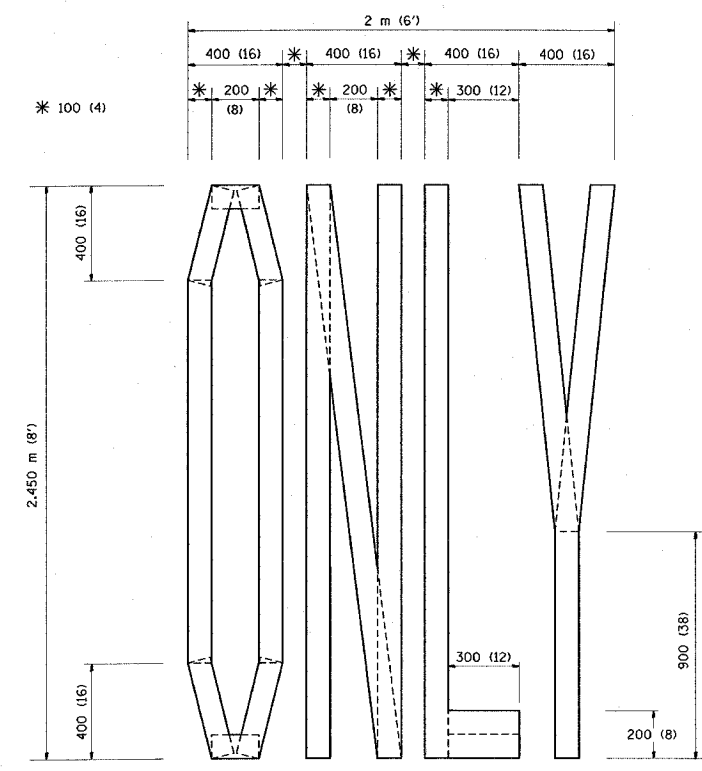
ILLINOIS DEPARTMENT OF TRANSPORTATION
DISTRICT ONE
TYPICAL PAVEMENT MARKINGS

SCALE: NONE
DATE 3/17/2005

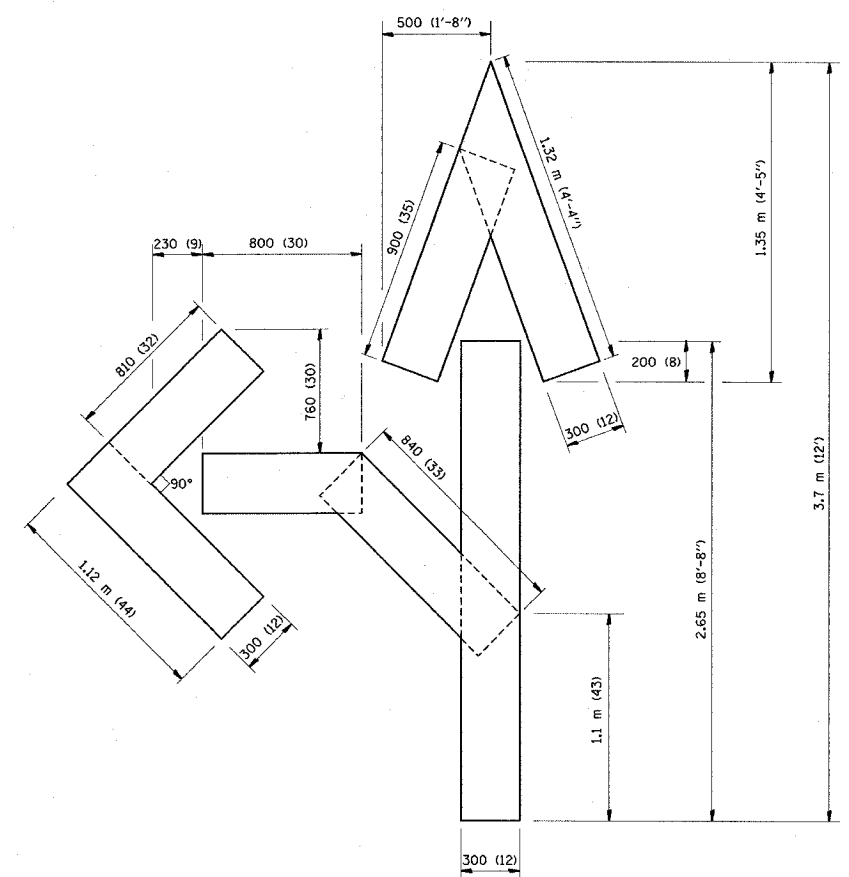
DRAWN BY CADD
CHECKED BY
TC-13
REVISION DATE: 01/06/00

62920

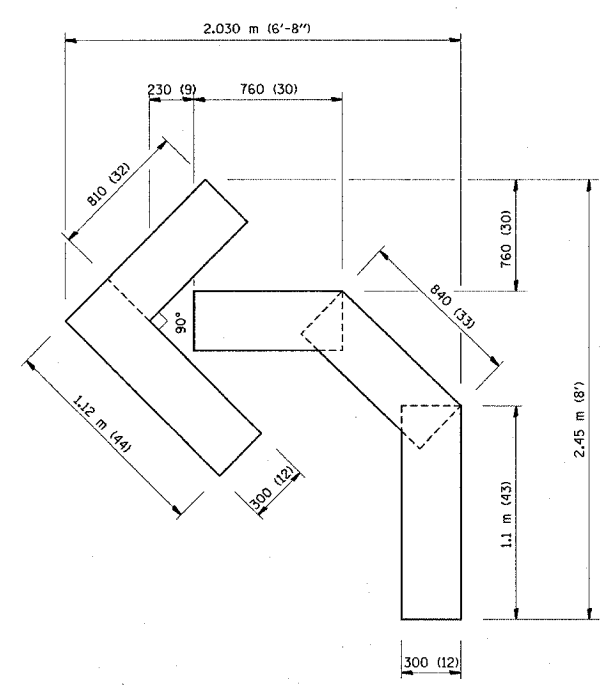
F. A. RTE.	SECTION	COUNTY	TOTAL SHEETS	SHEET NO.
3545	0303.1 RS	COOK	15	14
STA.		TO STA.		
FED. ROAD DIST. NO.		ILLINOIS	FED. AID PROJECT	



QUANTITY
 100 (4) LINE = 19.7 m (64.1 ft.)
 1.97 sq. m (21.1 sq. ft.)



QUANTITY
 100 (4) LINE = 25.3 m (82.5 ft.)
 2.53 sq. m (27.5 sq. ft.)



QUANTITY
 100 (4) LINE = 13.9 m (45.5 ft.)
 1.39 sq. m (15.2 sq. ft.)

All dimensions are in millimeters (Inches) unless otherwise shown.

ILLINOIS DEPARTMENT OF TRANSPORTATION

PAVEMENT MARKING
 LETTERS AND SYMBOLS
 FOR TRAFFIC STAGING

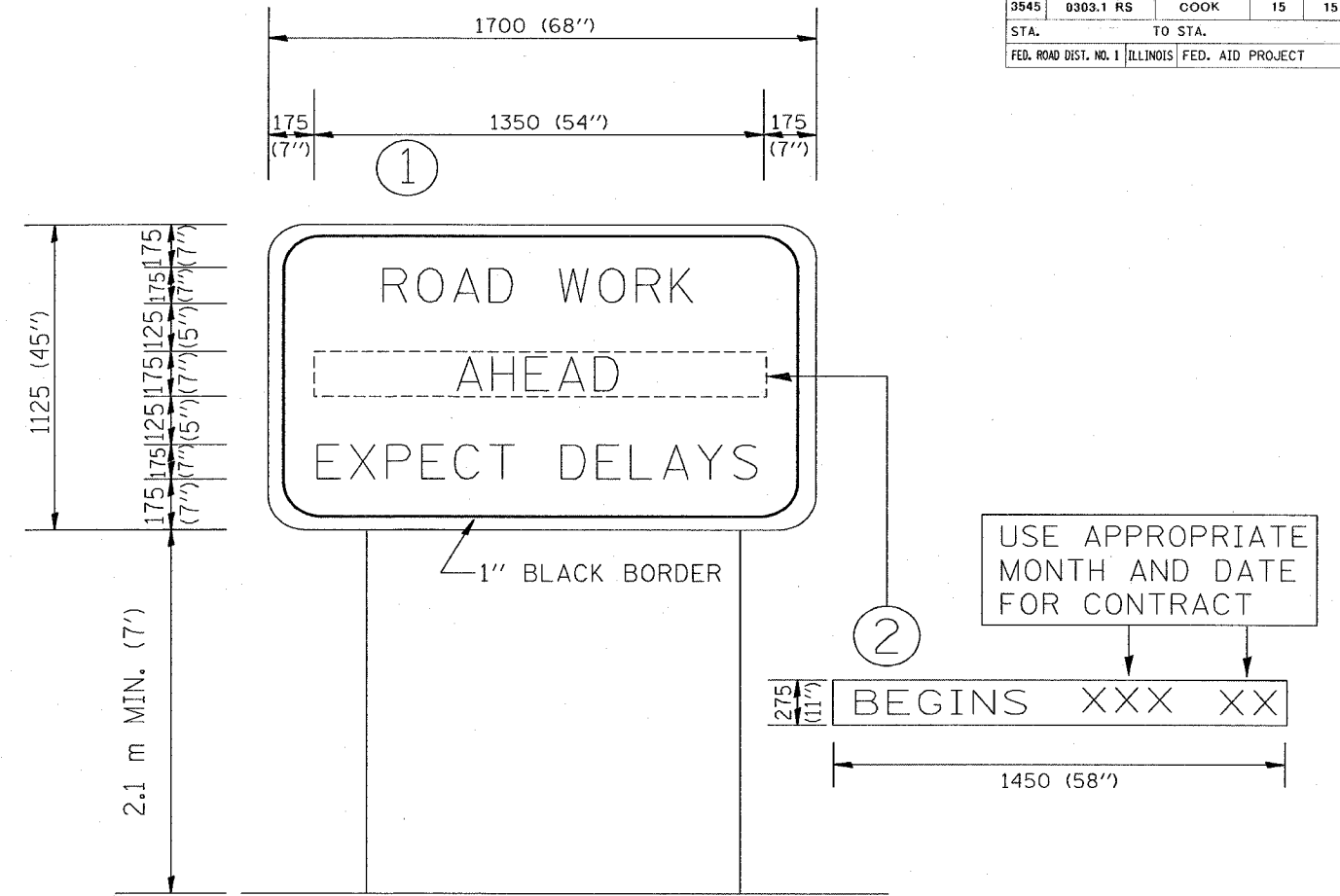
REVISIONS	
NAME	DATE
T. RAMMACHER	09/18/94
J. OBERLE	06/01/96
T. RAMMACHER	06/05/96
T. RAMMACHER	11/04/97
T. RAMMACHER	03/02/98
E. GOMEZ	08/28/00

SCALE: NONE
 DATE 3/17/2005

DRAWN BY CADD
 CHECKED BY
 TC-16

REVISION DATE: 08/28/00

F.A. RTE.	SECTION	COUNTY	TOTAL SHEETS	SHEET NO.
3545	0303.1 RS	COOK	15	15
STA.		TO STA.		
FED. ROAD DIST. NO. 1		ILLINOIS	FED. AID PROJECT	



NOTES:

1. USE BLACK LETTERING ON ORANGE BACKGROUND.
2. ERECT SIGNS IN ADVANCE OF THE LOCATION FOR THE "ROAD CONSTRUCTION AHEAD" SIGN AT LOCATIONS AS DIRECTED BY THE ENGINEER.
3. ERECT SIGN ① WITH INSTALLED PANEL ② ONE WEEK PRIOR TO THE START OF CONSTRUCTION.
4. REMOVE PANEL ② SOON AFTER THE START OF CONSTRUCTION.
5. SEE SPECIAL PROVISION FOR "TEMPORARY INFORMATION SIGNING" FOR ADDITIONAL INFORMATION.
6. ONE SIGN ASSEMBLY EQUALS 2.3 SQ. M. (25.70 SQ. FT.)

ALL DIMENSIONS ARE IN MILLIMETERS (INCHES) UNLESS OTHERWISE SHOWN.

REVISIONS		ILLINOIS DEPARTMENT OF TRANSPORTATION TEMPORARY INFORMATION SIGNING
NAME	DATE	
R. MIRS	9-15-97	SCALE: DATE 3/17/2005
R. MIRS	12-11-97	
T. RAMMACHER	2-2-99	
		DRAWN BY: BUR. OF DESIGN CHECKED BY: