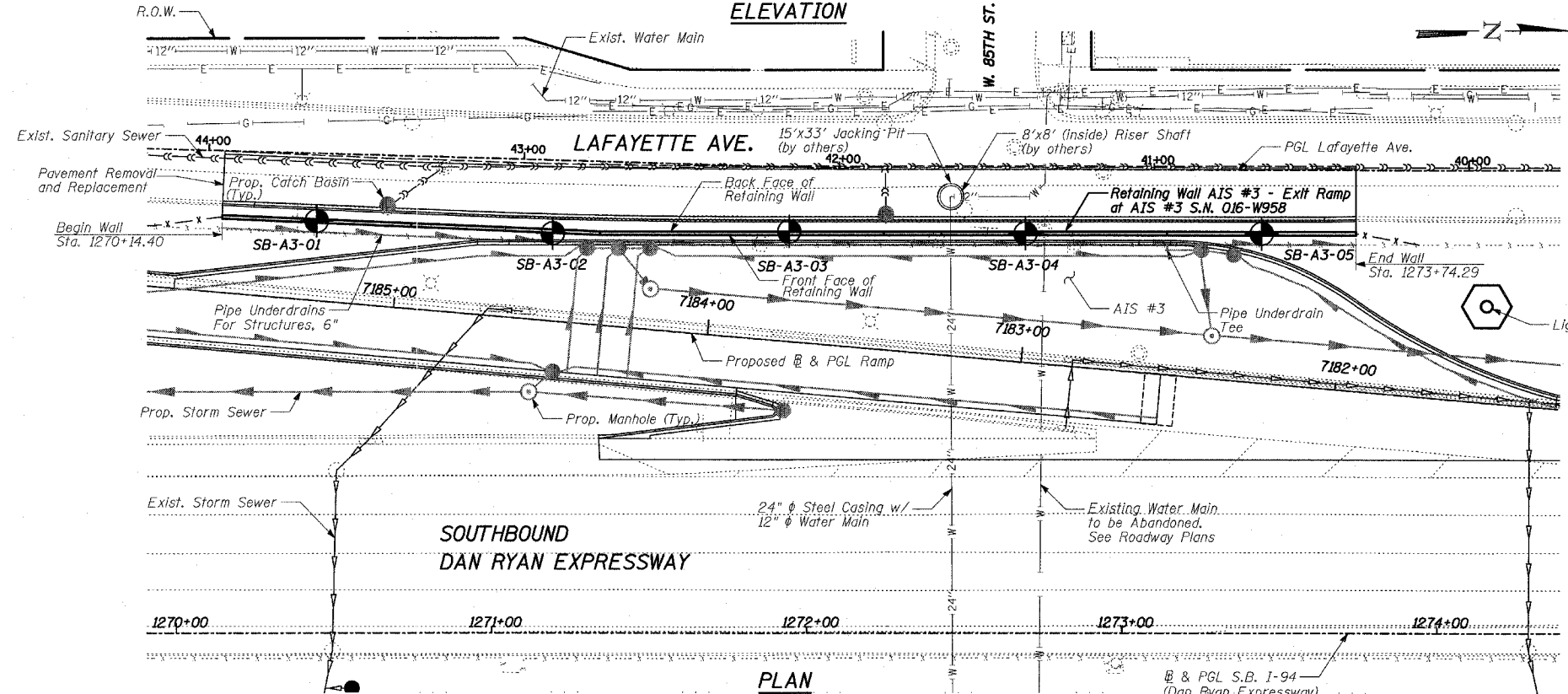
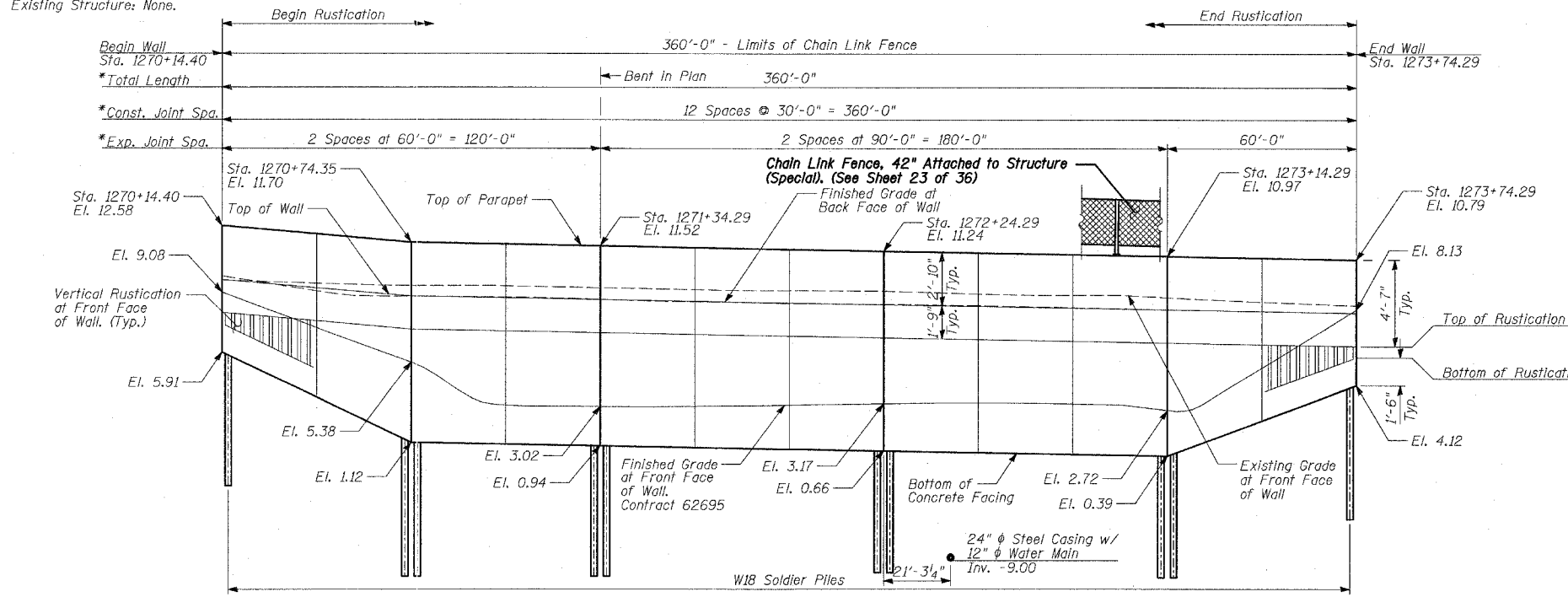


Benchmarks: BM 3549 Set "+" westerly flange bolt of hydrant at southwest intersection of 87th St. and Lafayette Ave.. El. 9.49

Existing Structure: None.

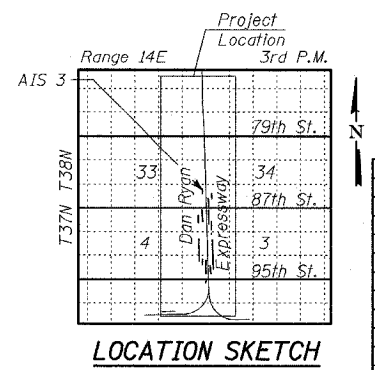
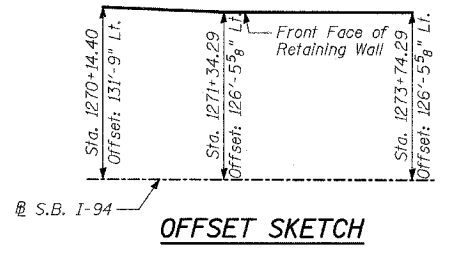
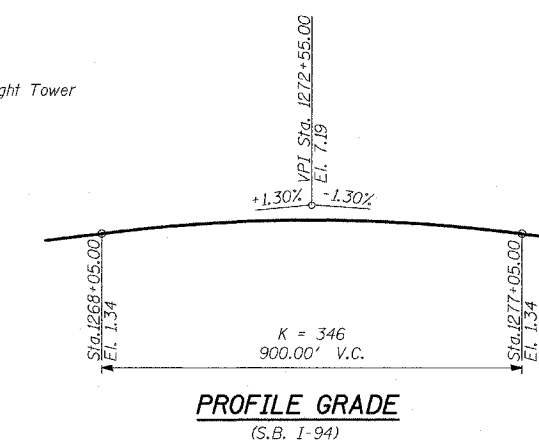
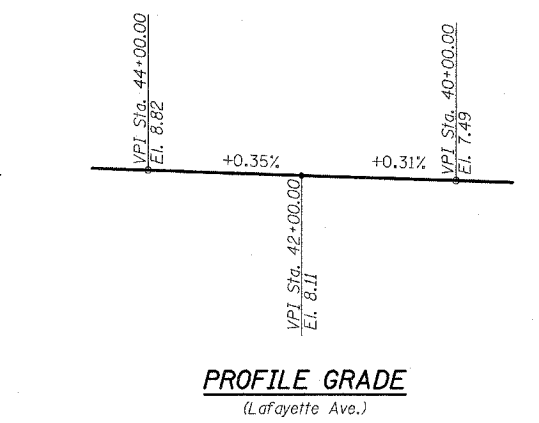
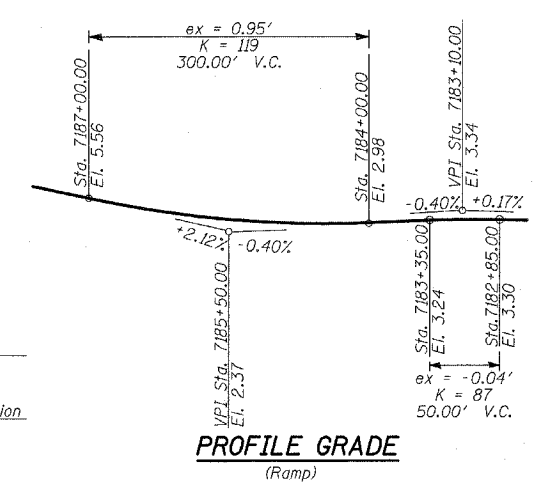
F.A.I. RTE.	SECTION	COUNTY	TOTAL SHEETS	SHEET NO.
94		COOK	36	19
STA. 1200+00.00 TO STA. 1330+00.00				
FED. ROAD DIST. NO. ILLINOIS		FED. AID PROJECT		62931
* (1516.1, 1717 & 1818) I-2				



LEGEND

⊙ Boring Location

* Measured along Front Face of Wall.



REVISIONS	
NAME	DATE

ILLINOIS DEPARTMENT OF TRANSPORTATION
**F.A.I. 94 (DAN RYAN EXPRESSWAY)
 RETAINING WALL ALONG LAFAYETTE AVE.
 EXIT RAMP AT AIS #3
 AIS 3 - GENERAL PLAN**
 STA. 1270+14.40 TO STA. 1273+74.29
 S.N. 016-W958
 SCALE: N.T.S.
 DATE: APRIL 15, 2005

DESIGNED BY: MI, DJR
 DRAWN BY: DJR, TB
 CHECKED BY: TD, MI

TYLIN INTERNATIONAL

4/14/2005 7:48:09 AM