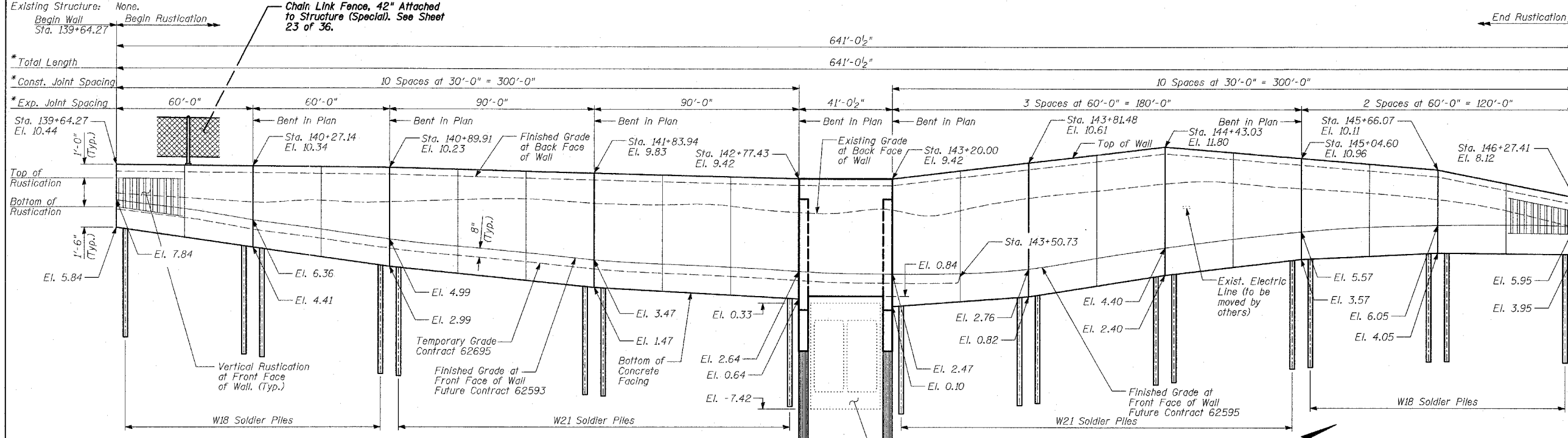
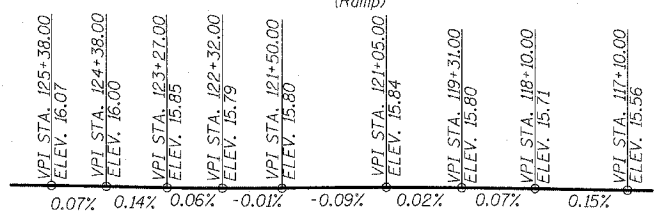
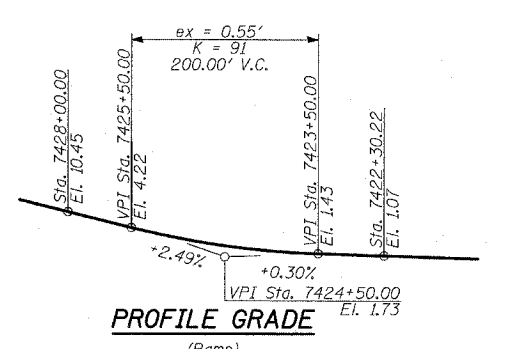
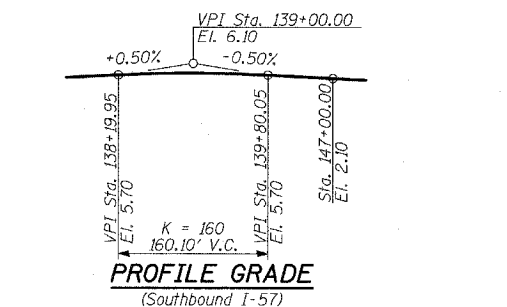
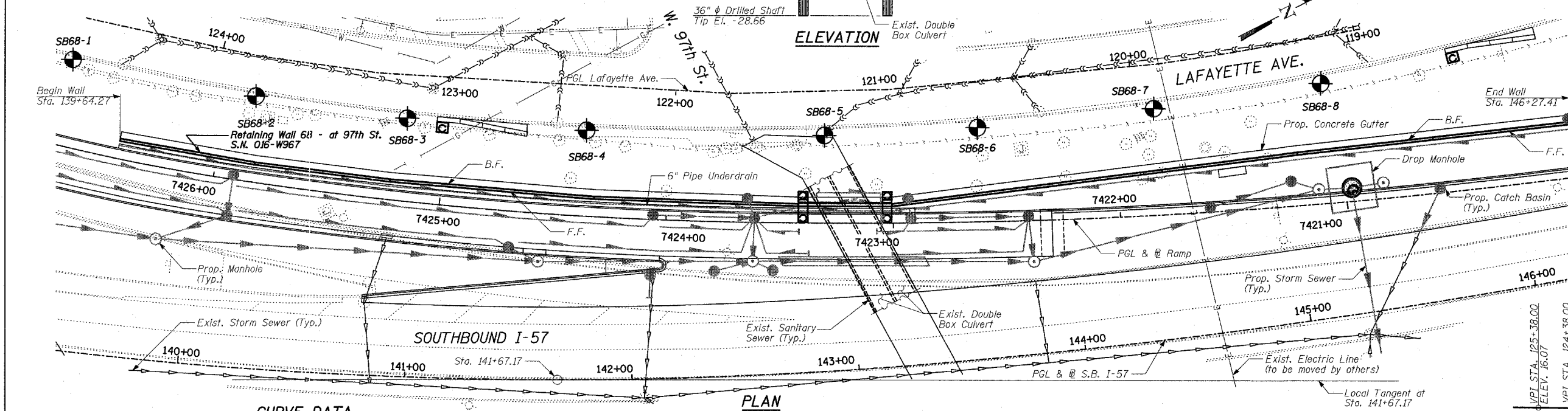


Benchmarks: BM 3514 Set "+" on chain bolt of hydrant at southwest intersection of LaSalle St. and 97th St. El. 17.56



F.A.I. RTE.	SECTION	COUNTY	TOTAL SHEETS	SHEET NO.
94		COOK	36	20
STA. 1200+00.00 TO STA. 1330+00.00				
FED. ROAD DIST. NO. ILLINOIS FED. AID PROJECT				
• (1516.1, 1717 & 1818) I-2		62931		

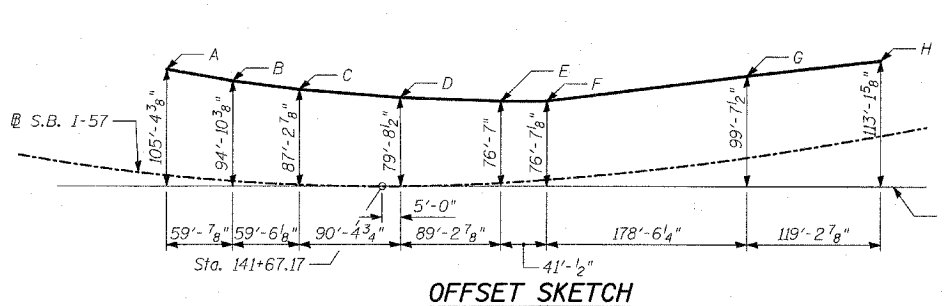


CURVE DATA

Curve SB5700	Curve SB5701
$\Delta = 66^\circ 11' 55.15''$ (Lt.)	$\Delta = 24^\circ 02' 7.49''$ (Lt.)
$D = 3^\circ 02' 10.83''$	$D = 1^\circ 58' 30.13''$
$R = 1,887.00$	$R = 2,901.00$
$L = 2,180.21$	$L = 1,216.96$
$E = 365.53$	$E = 65.01$
$T = 1,230.09$	$T = 617.56$
$PC = Sta. 121+39.97$	$PC = Sta. 143+20.18$
$PI = Sta. 133.70.06$	$PI = Sta. 149+37.75$
$PT = Sta. 143+20.18$	$PT = Sta. 155+37.15$

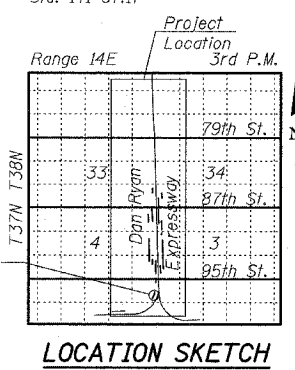
DESIGN SPECIFICATION
AASHTO 2002 Standard Specifications for Highway Bridges

DESIGN STRESSES
FIELD UNITS
 $f'_c = 3,500$ psi
 $f_y = 60,000$ psi (Reinforcement)
 $f_y = 36,000$ psi (M270 Grade 36) Soldier Piles



OFFSET SKETCH

Point	Sta.	Offset to S.B. I-57
A	139+64.27	95'-0 $\frac{1}{2}$ " Lt.
B	140+27.14	89'-11" Lt.
C	140+89.91	85'-8 $\frac{3}{4}$ " Lt.
D	141+83.94	79'-8 $\frac{1}{2}$ " Lt.
E	142+77.43	73'-5 $\frac{1}{8}$ " Lt.
F	143+20.00	70'-7 $\frac{1}{2}$ " Lt.
G	145+04.60	73'-5" Lt.
H	146+27.41	67'-0 $\frac{1}{8}$ " Lt.



REVISIONS

NAME	DATE

ILLINOIS DEPARTMENT OF TRANSPORTATION
F.A.I. 94 (DAN RYAN EXPRESSWAY)
RETAINING WALL ALONG LAFAYETTE AVE.
AT 97TH ST.
WALL 68 - GENERAL PLAN
STA. 139+64.27 TO STA. 146+27.41
S.N. 016-W967
SCALE: N.T.S.
DATE: APRIL 15, 2005

DESIGNED BY: MI, DJR
DRAWN BY: DJR
CHECKED BY: TD, MI

TYLIN INTERNATIONAL

1/14/2005 7:18:15 AM