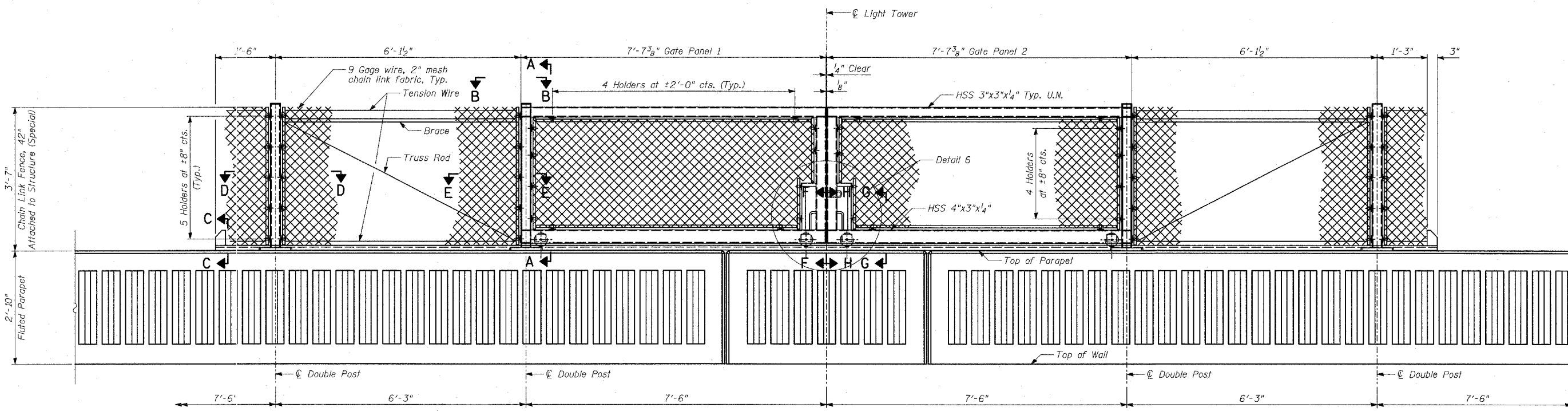


BACK FACE ELEVATION - GATE IN OPEN POSITION



BACK FACE ELEVATION - GATE IN CLOSED POSITION

TYLIN INTERNATIONAL

- NOTES:**
1. For notes, see Sheet 29 of 36.
 2. For Sections A-A, B-B, D-D & E-E, see Sheet 31 of 36.
 3. For Sections C-C, F-F, G-G, H-H, J-J and Details 4, 5, 6 & 7, see Sheet 32 of 36.

REVISIONS	
NAME	DATE

ILLINOIS DEPARTMENT OF TRANSPORTATION
F.A.I. 94 (DAN RYAN EXPRESSWAY)
WALLS 36, 38, 72, 73A, 73B
GATE ELEVATIONS

SCALE: N.T.S.
 DATE: APRIL 15, 2005

DESIGNED BY: MI, DJR
 DRAWN BY: DJR
 CHECKED BY: MI, TD

4/14/2005 7:09:59 AM