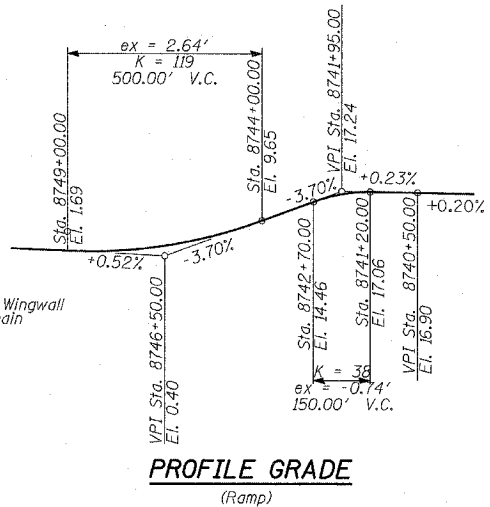
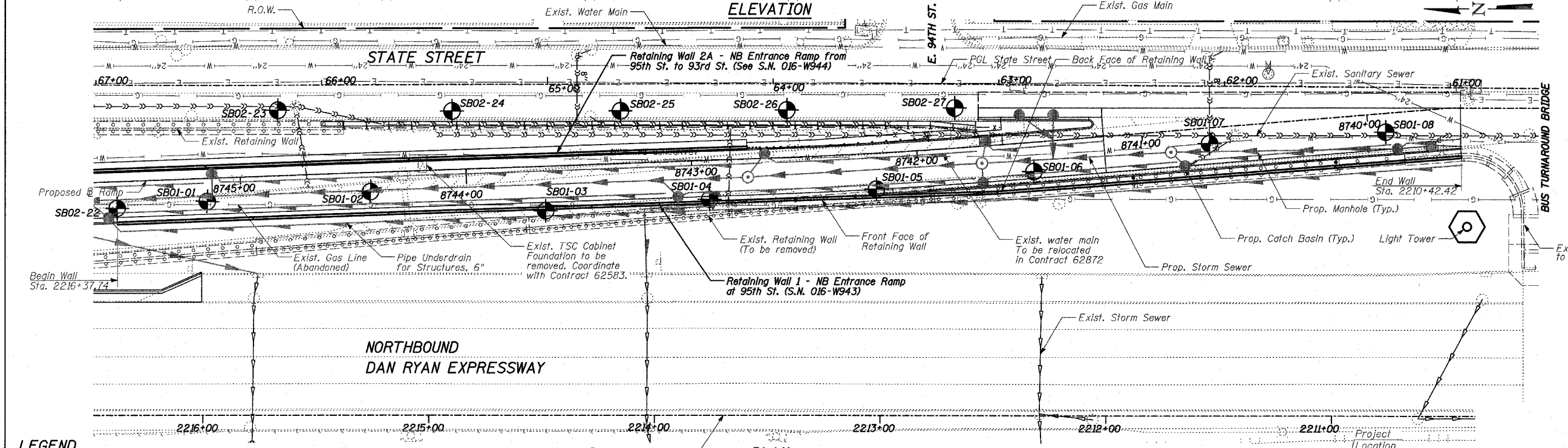
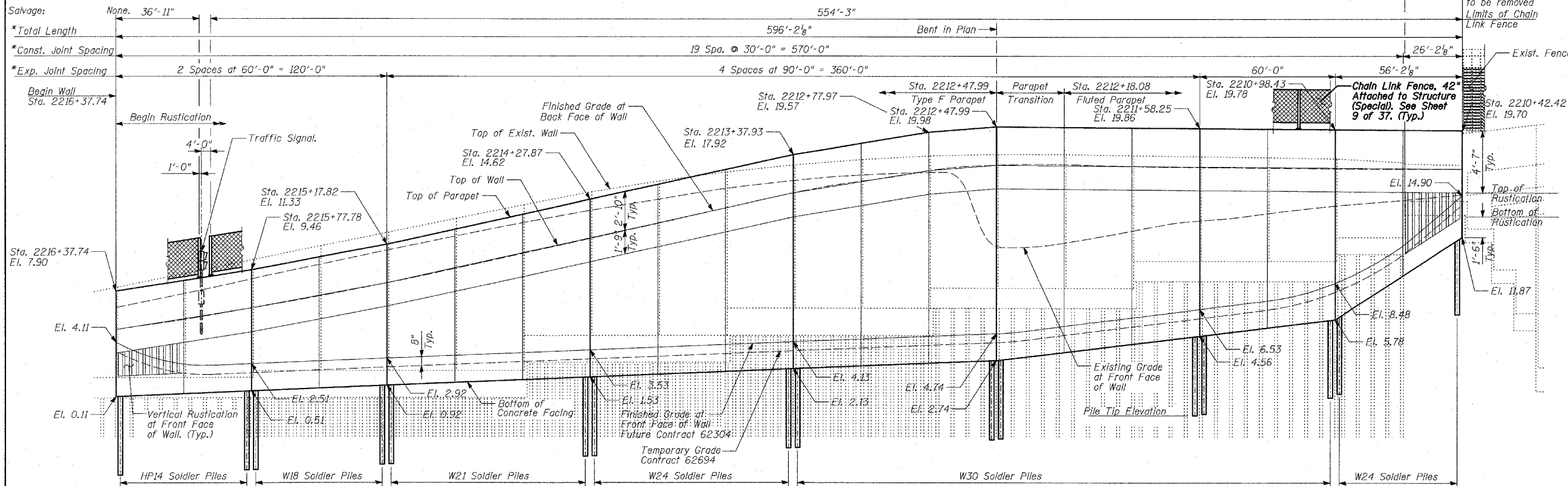


Benchmark: BM 3522 Set "A" on south southeast flange bolt of hydrant ± halfway between north and south entrance to Cigo, east side of State St. and north of 95th St. El. 18.06

Existing Structure: Reinforced concrete cantilever retaining wall, supported on concrete pile footings, along the Northbound Dan Ryan entrance ramp at 91st Street. Built in 1960. Total length ±630'-8"

F.A.I. RTE.	SECTION	COUNTY	TOTAL SHEETS	SHEET NO.
94	*	COOK	37	6
STA. 2210+00.00 TO STA. 2356+00.00				
FED. ROAD DIST. NO.		ILLINOIS FED. AID PROJECT		
* (1516.1, 1717 & 1818) I-3		62932		



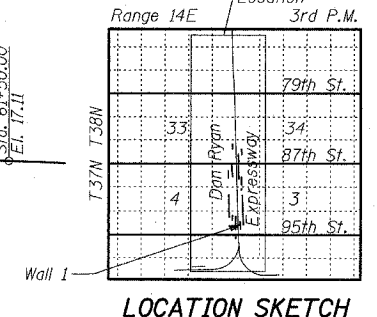
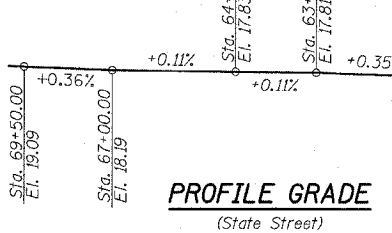
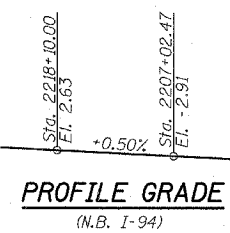
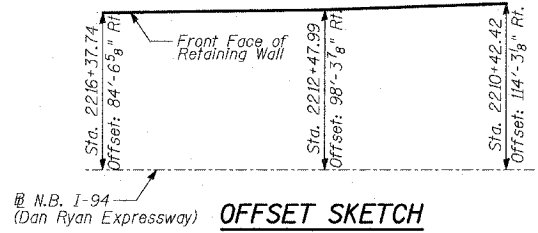
**LEGEND**

• Borings Location

\* Measured along Front Face of Wall.

**DESIGN SPECIFICATION**  
AASHTO 2002 Standard Specifications for Highway Bridges

**DESIGN STRESSES**  
**FIELD UNITS**  
f<sub>c</sub> = 3,500 psi  
f<sub>y</sub> = 60,000 psi (Reinforcement)  
f<sub>y</sub> = 35,000 psi (M270 Grade 36) Solder Piles



REVISIONS	
NAME	DATE

ILLINOIS DEPARTMENT OF TRANSPORTATION  
F.A.I. 94 (DAN RYAN EXPRESSWAY)  
RETAINING WALL ALONG STATE ST.  
ENTRANCE RAMP AT 95TH ST.  
WALL 1 - GENERAL PLAN  
STA. 2216+37.74 TO STA. 2210+42.42  
S.N. 016-W943  
SCALE: N.T.S.  
DATE: APRIL 15, 2005

DESIGNED BY: MI, MAF  
DRAWN BY: MAF, TB  
CHECKED BY: TD, MI

**TYLIN INTERNATIONAL**

04/15/2005 07:28:18 AM