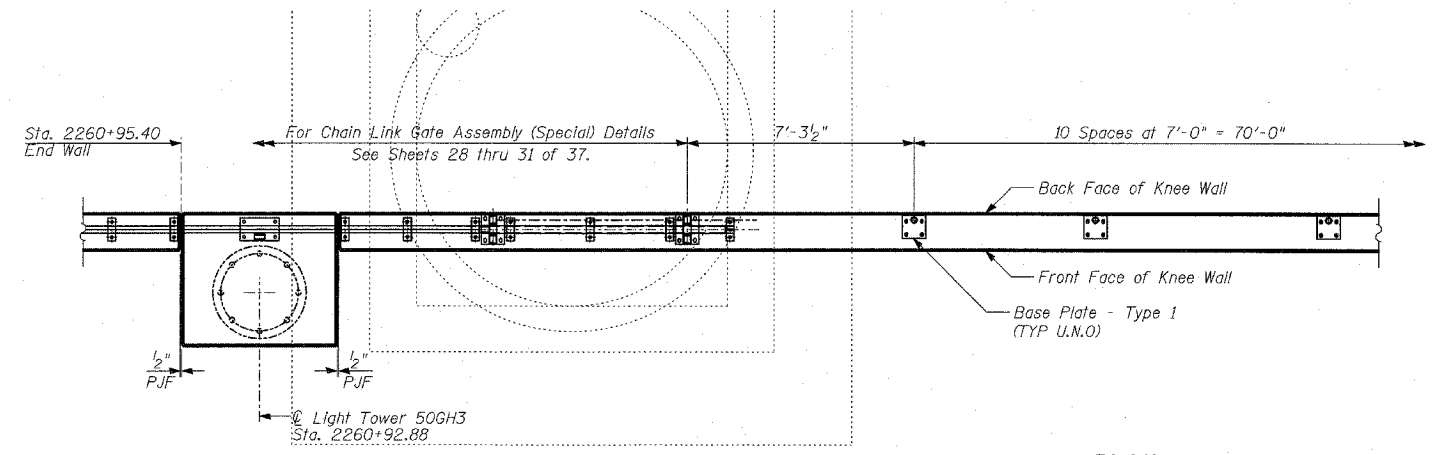
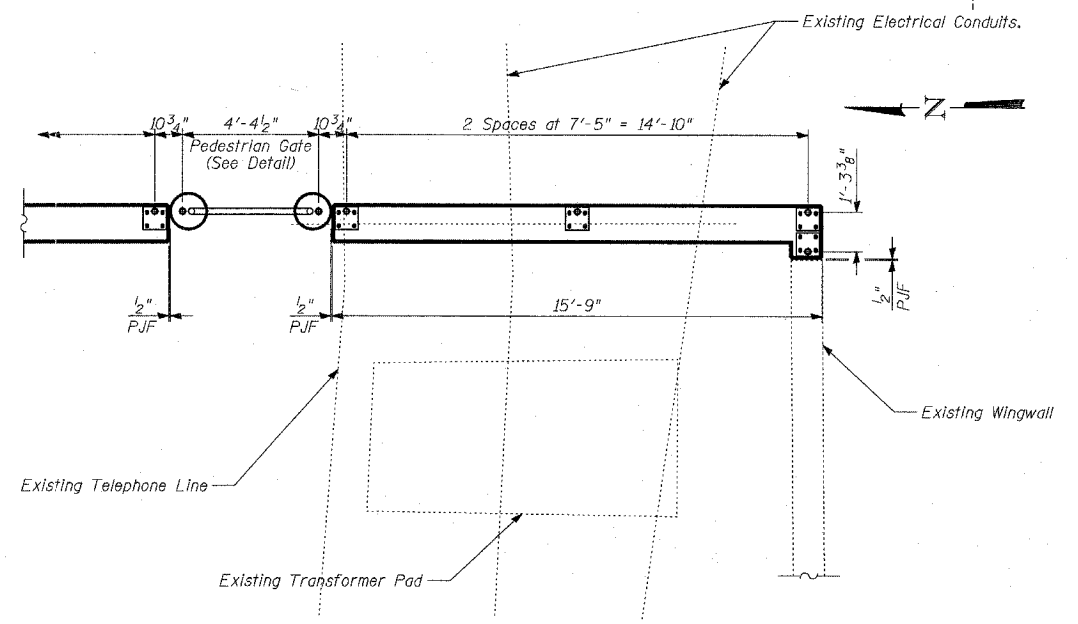


BACK FACE ELEVATION - TOP OF FLUTED KNEE WALL



PLAN

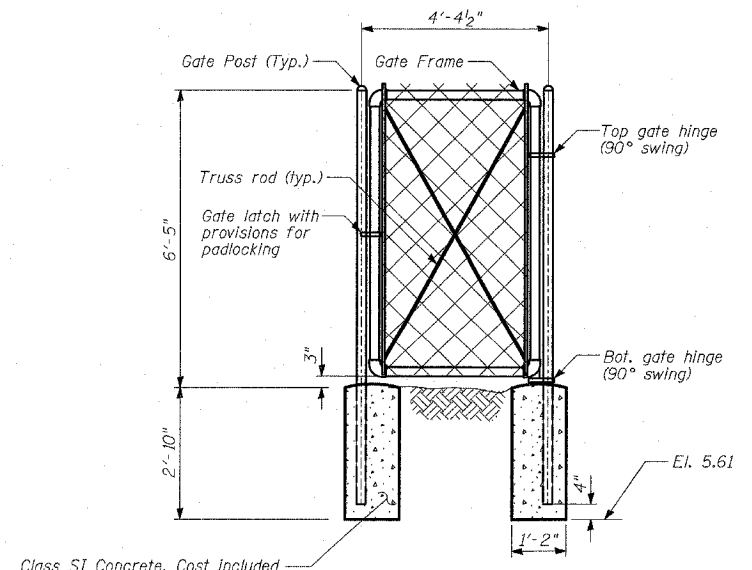


BILL OF MATERIAL

WALL	ITEM	UNIT	TOTAL
6	Chain Link Gates (Special)	Each	1

REVISIONS	
NAME	DATE

ILLINOIS DEPARTMENT OF TRANSPORTATION
 F.A.I. 94 (DAN RYAN EXPRESSWAY)
 RETAINING WALL ALONG STATE ST.
 ENTRANCE RAMP FROM 87TH ST.
 WALL 6 - CHAIN LINK GATES (SPECIAL)
 DESIGNED BY: MI, MAF
 SCALE: N.T.S. DRAWN BY: MAF, DJR
 DATE: APRIL 15, 2005 CHECKED BY: TD, MI



PEDESTRIAN GATE

LEGEND:
 U.N.O. - Denotes Unless Noted Otherwise

NOTES:
 1. Work this sheet with Sheets 7, 9 and 28 thru 31 of 37.