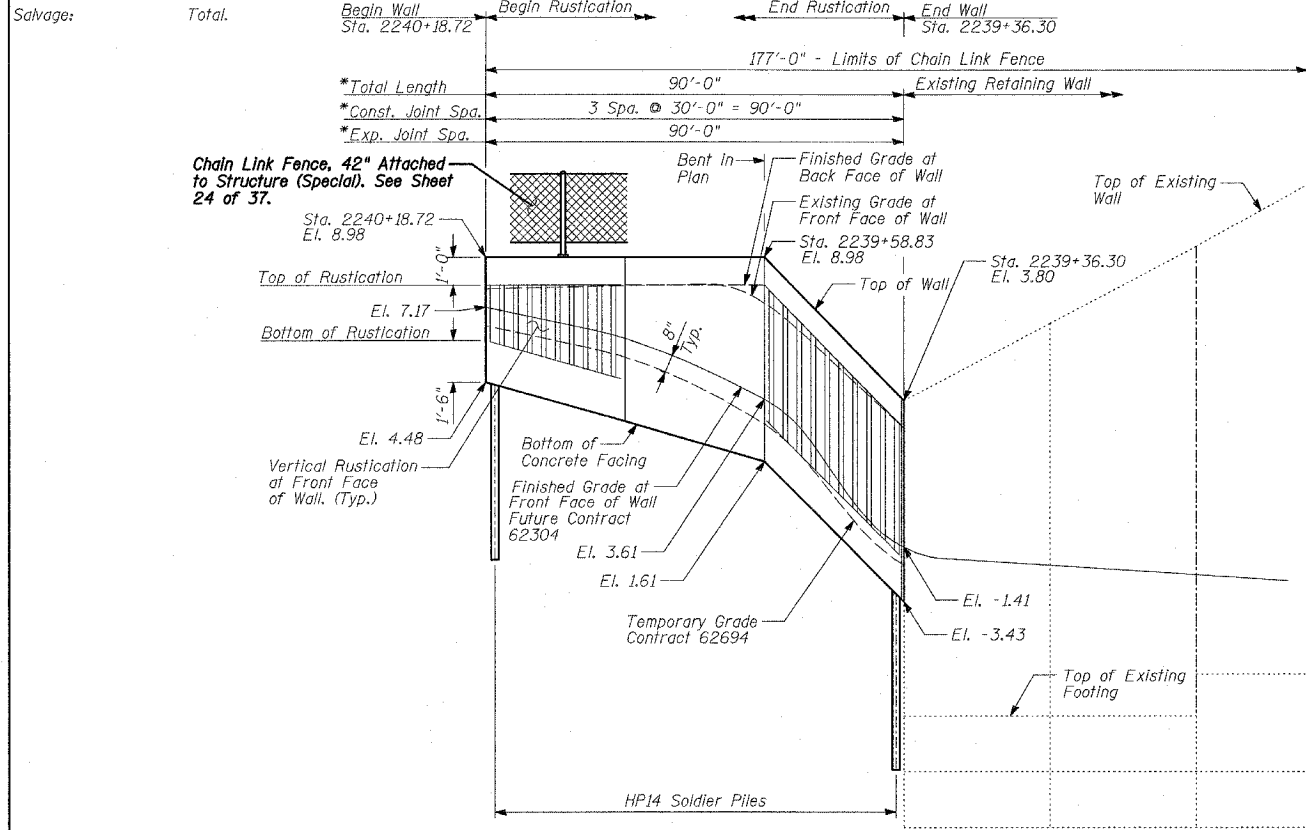
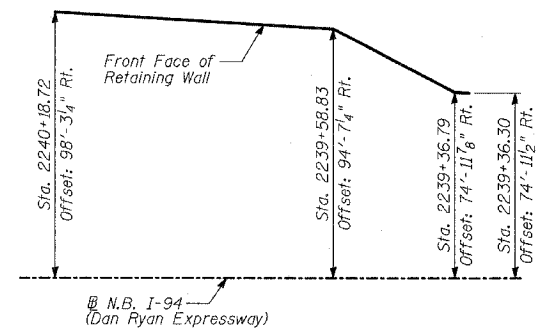
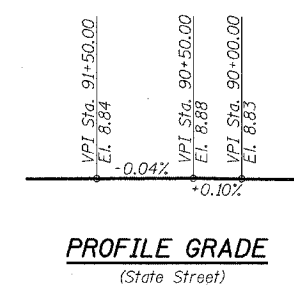
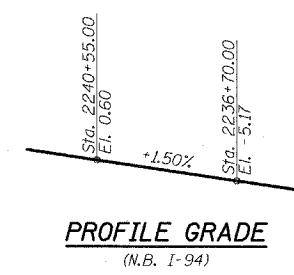


Benchmarks: BM 3552 Set "+" northeast bolt of traffic signal/light base at southeast intersection of 91st St. and State St. El. 14.81

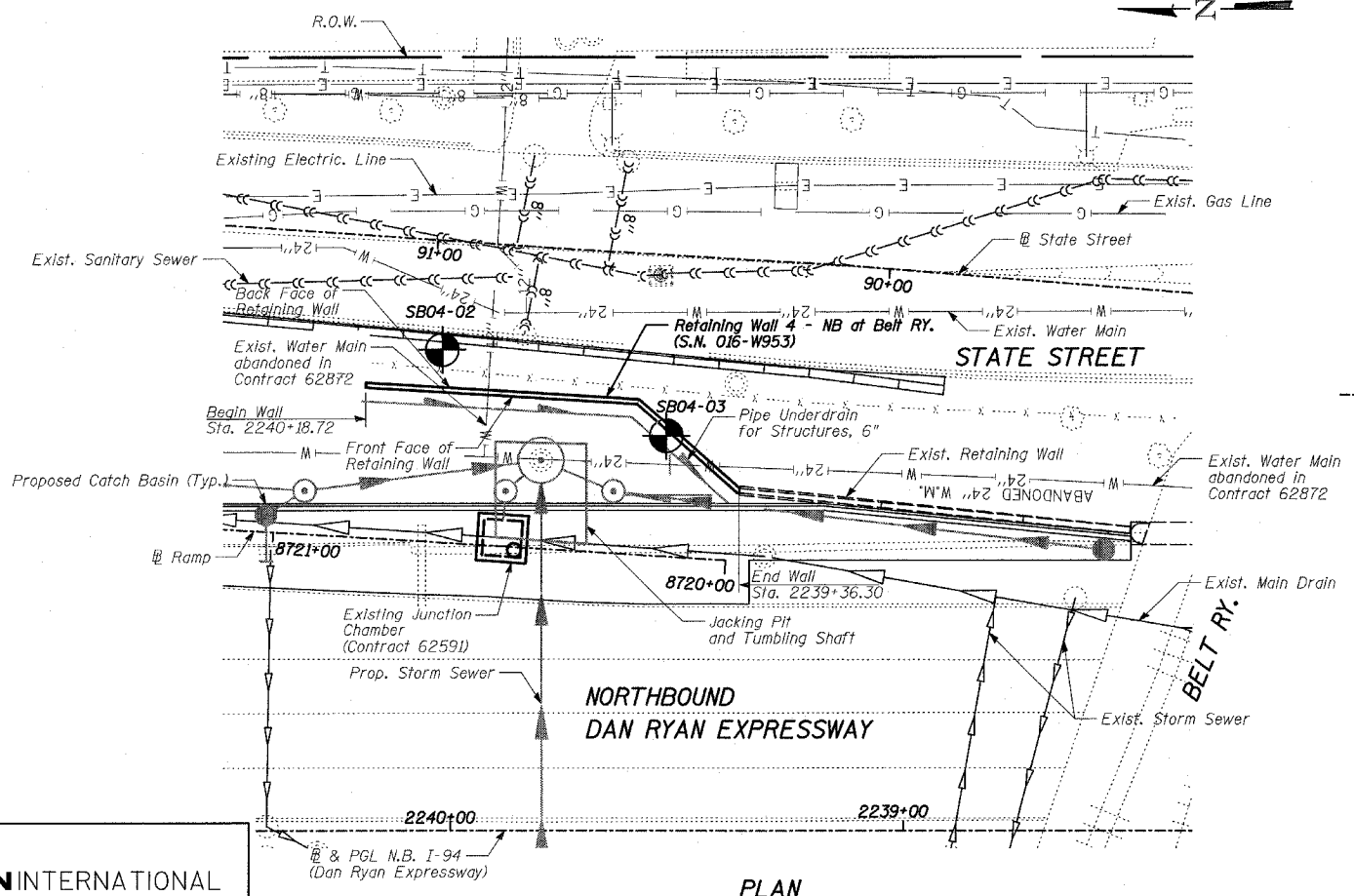
Existing Structure: Reinforced concrete cantilever retaining wall, supported on concrete spread footings, along Northbound Dan Ryan Built in 1960. Total length ±87'.



ELEVATION

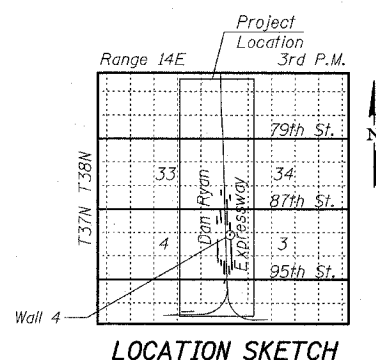


OFFSET SKETCH



PLAN

LEGEND
 Boring Location
 Measured along Front Face of Wall.



LOCATION SKETCH

F.A.I. RTE.	SECTION	COUNTY	TOTAL SHEETS	SHEET NO.
94	*	COOK	37	23
STA. 2210+00.00 TO STA. 2356+00.00				
FED. ROAD DIST. NO.		ILLINOIS	FED. AID PROJECT	
(1516.1, 1717 & 1818) I-3		62932		

DESIGN SPECIFICATION

AASHTO 2002 Standard Specifications for Highway Bridges

DESIGN STRESSES

FIELD UNITS
 $f'_c = 3,500$ psi
 $f_y = 60,000$ psi (Reinforcement)
 $f_y = 36,000$ psi (M270 Grade 36) Soldier Piles

REVISIONS	
NAME	DATE

ILLINOIS DEPARTMENT OF TRANSPORTATION
F.A.I. 94 (DAN RYAN EXPRESSWAY)
RETAINING WALL ALONG STATE ST.
AT BELT RY.
WALL 4 - GENERAL PLAN
STA. 2240+18.72 TO STA. 2239+36.30
 S.N. 016-W953 DESIGNED BY: MI, DJR
 SCALE: N.T.S. DRAWN BY: DJR, TB
 DATE: APRIL 15, 2005 CHECKED BY: TD, MI

TYLINT INTERNATIONAL

04/15/2005 07:50:18 AM