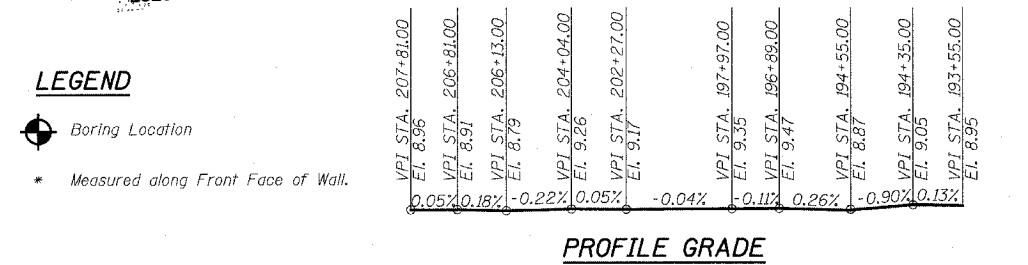
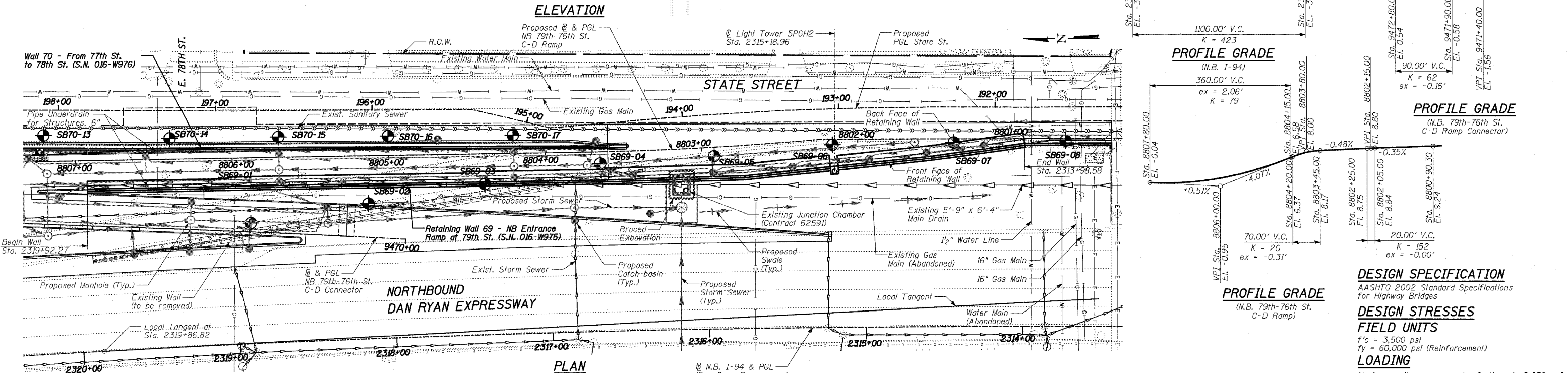
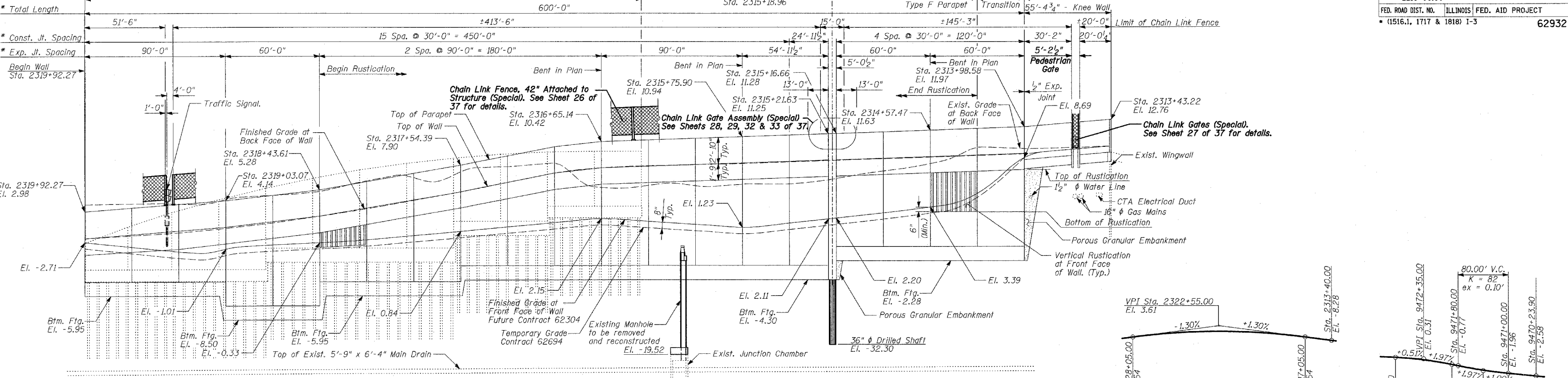


Benchmarks: BM 2251 Found cross on east bolt of fire hydrant on the east side of State St. Approximately 135 feet north of 79th St. El.=0.95 Feet  
 Existing Structure: Reinforced concrete cantilever retaining wall, supported on concrete pile footings, along the Northbound Dan Ryan entrance ramp at 79th Street. Built in 1960. Total length ±355'-1"  
 Salvage: None

F.A.I. RTE.	SECTION	COUNTY	TOTAL SHEETS	SHEET NO.
94		COOK	37	25
STA. 2210+00.00 TO STA. 2356+00.00				
FED. ROAD DIST. NO. ILLINOIS FED. AID PROJECT				
(1516.1, 1717 & 1818) I-3 62932				



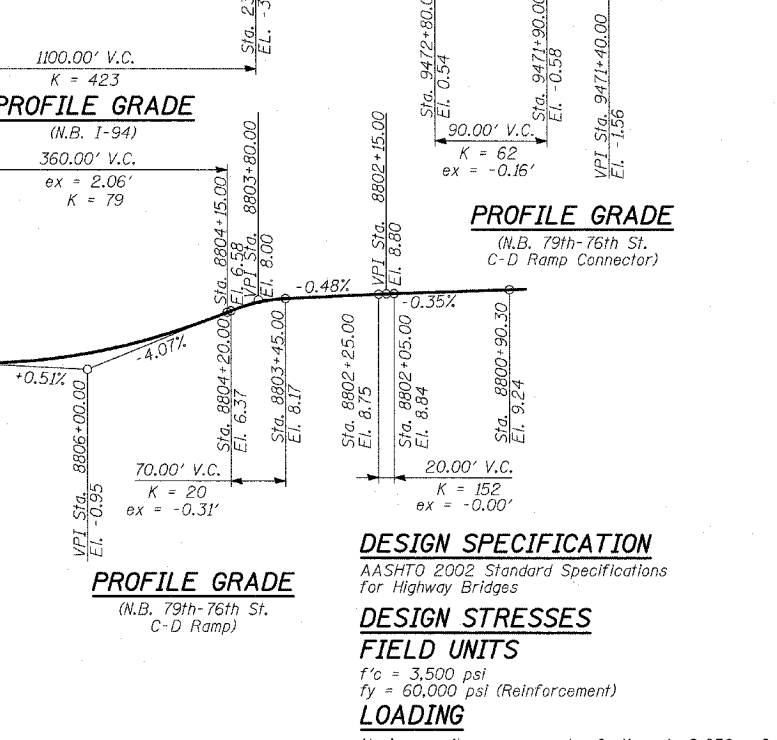
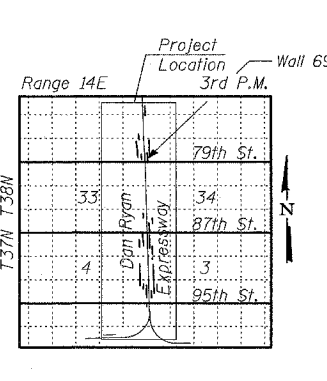
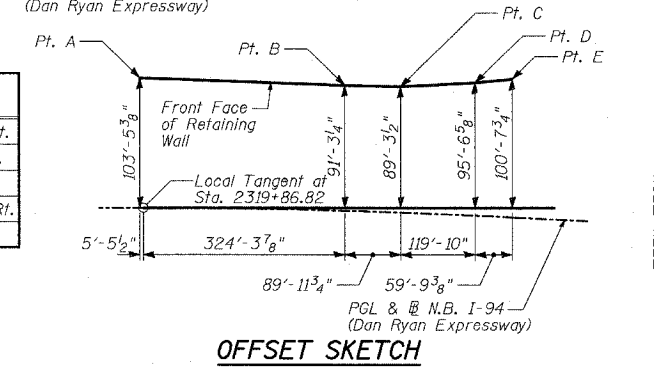
**LEGEND**

- Boring Location
- \* Measured along Front Face of Wall.

VPI STA.	Grade
207+81.00	0.05%
206+81.00	0.18%
206+13.00	-0.22%
204+04.00	0.05%
202+27.00	-0.04%
197+97.00	-0.11%
196+89.00	0.26%
194+55.00	-0.90%
194+35.00	0.13%
193+55.00	
193+55.00	
193+55.00	

**OFFSET SKETCH**

Point	Station	Offset to N.B. I-94
A	2319+92.27	103'-5 3/8" Rt.
B	2316+65.14	95'-9 7/8" Rt.
C	2315+75.90	96'-8 1/2" Rt.
D	2314+57.47	107'-10 5/8" Rt.
E	2313+98.58	116'-7" Rt.



REVISIONS	
NAME	DATE

ILLINOIS DEPARTMENT OF TRANSPORTATION  
 F.A.I. 94 (DAN RYAN EXPRESSWAY)  
 RETAINING WALL ALONG STATE ST.  
 ENTRANCE RAMP AT 79TH ST.  
 WALL 69 - GENERAL PLAN  
 STA. 2319+92.27 TO STA. 2313+98.58  
 S.N. 016-W975 DESIGNED BY: MI, DJR  
 SCALE: N.T.S. DRAWN BY: DJR, PAL  
 DATE: APRIL 15, 2005 CHECKED BY: TD, MI

TYLIN INTERNATIONAL