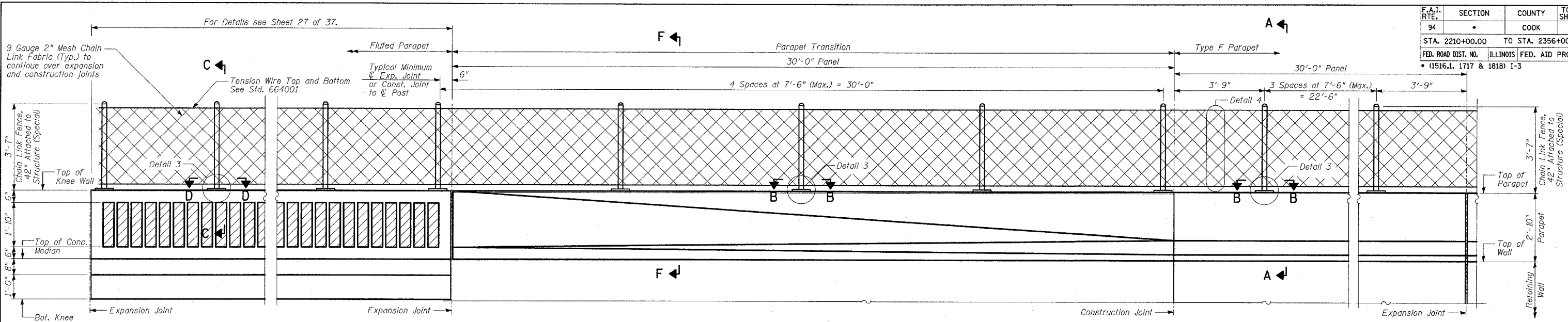
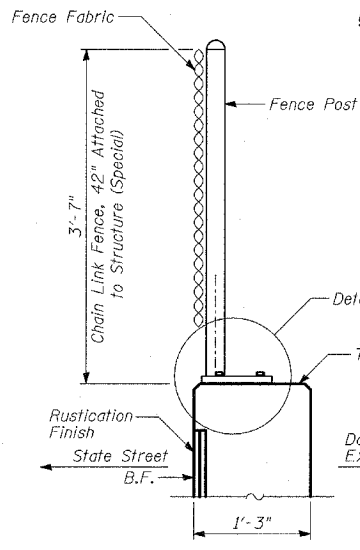


F.A.I. RTE.	SECTION	COUNTY	TOTAL SHEETS	SHEET NO.
94	*	COOK	37	26
STA. 2210+00.00		TO STA. 2356+00.00		
FED. ROAD DIST. NO.		ILLINOIS FED. AID PROJECT		62932
(1516.1, 1717 & 1818) I-3				

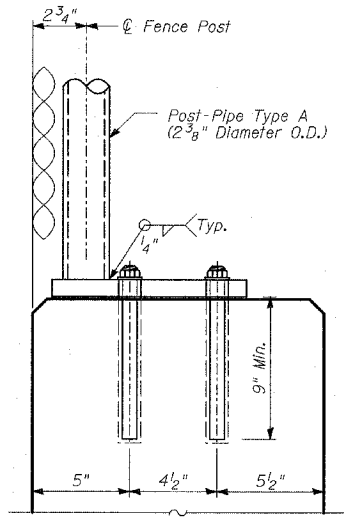


BACK FACE ELEVATION
KNEE WALL, FLUTED KNEE WALL, TRANSITION AND CHAIN LINK FENCE

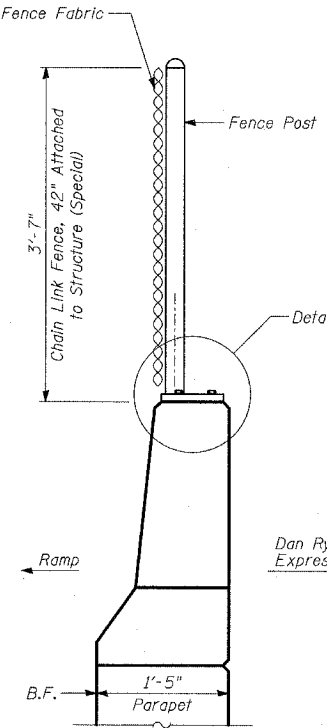
BACK FACE ELEVATION - TOP OF RETAINING WALLS
TYPE F PARAPET AND CHAIN LINK FENCE



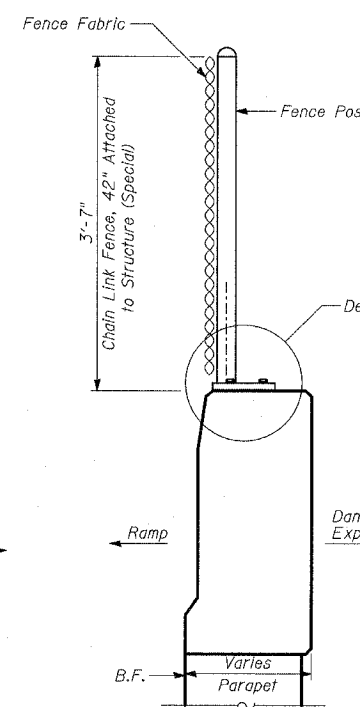
SECTION C-C



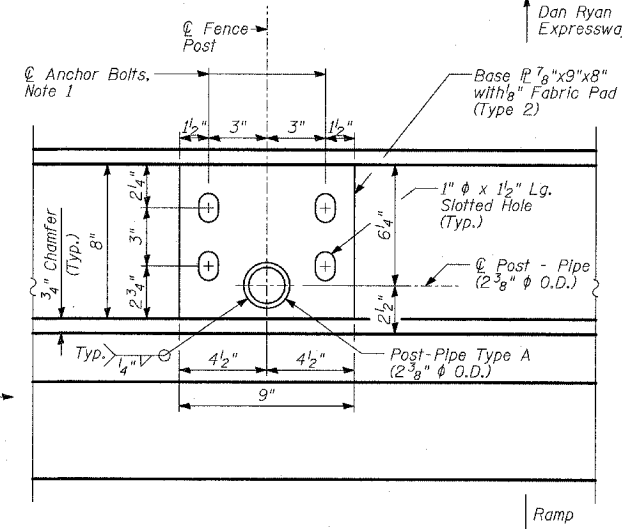
DETAIL 1



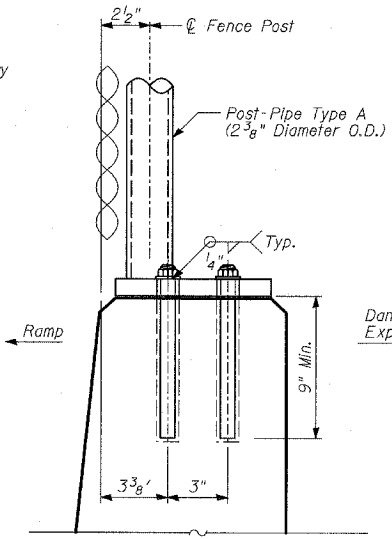
SECTION A-A



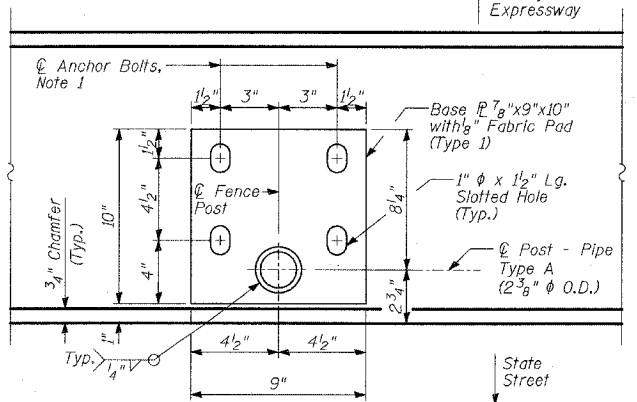
SECTION F-F



SECTION B-B
BASE PLATE PLAN



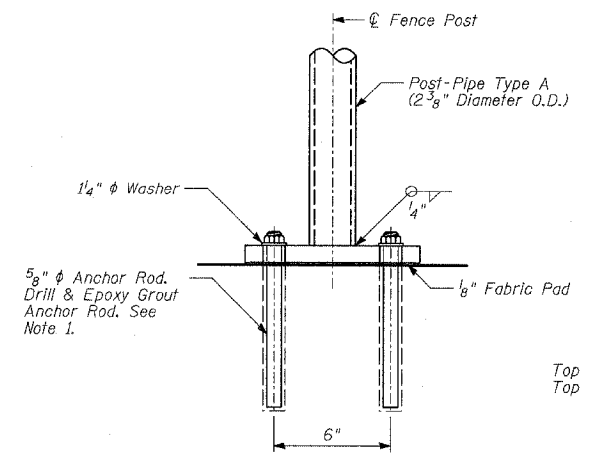
DETAIL 2



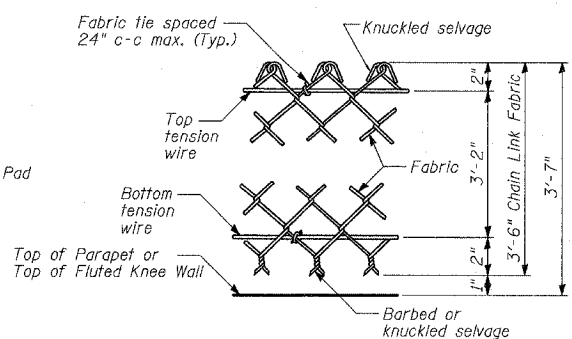
SECTION D-D
BASE PLATE PLAN

NOTES:

- The Contractor shall drill and epoxy grout 5/8" diameter anchor rods. The Contractor shall use the capsule or the adhesive cartridge type anchor rods that have been previously tested and given prior approval by the Department for the above specified anchor rod spacing. The Contractor shall install these anchor rods in pre-drilled holes according to the manufacturer's recommendations and procedures. The capsule or adhesive cartridge shall be sealed with pre-measured amounts of adhesive chemical. Anchor rod threading to be peened after nuts are installed.
- For additional chain link fence details, see Standard 664001.



DETAIL 3



DETAIL 4

BILL OF MATERIAL

WALL	ITEM	UNIT	TOTAL
69	Chain Link Fence, 42" Attached to Structure (Special)	FOOT	631

REVISIONS	
NAME	DATE

ILLINOIS DEPARTMENT OF TRANSPORTATION
F.A.I. 94 (DAN RYAN EXPRESSWAY)
RETAINING WALL ALONG STATE ST.
ENTRANCE RAMP AT 79TH ST.
WALL 69 - CHAIN LINK FENCE,
42" ATTACHED TO STRUCTURE (SPECIAL)
 DESIGNED BY: MI, DJR
 DRAWN BY: DJR
 SCALE: N.T.S.
 DATE: APRIL 15, 2005
 CHECKED BY: TD, MI

I:\2005\04\15\2005_08\08\36_A01.dwg
 04/15/2005 08:08:36 AM