

**INDEX OF SHEETS**

FOR INDEX OF SHEETS, SEE SHEET NO. 2

PROJECT LOCATED IN THE CITY OF CHICAGO

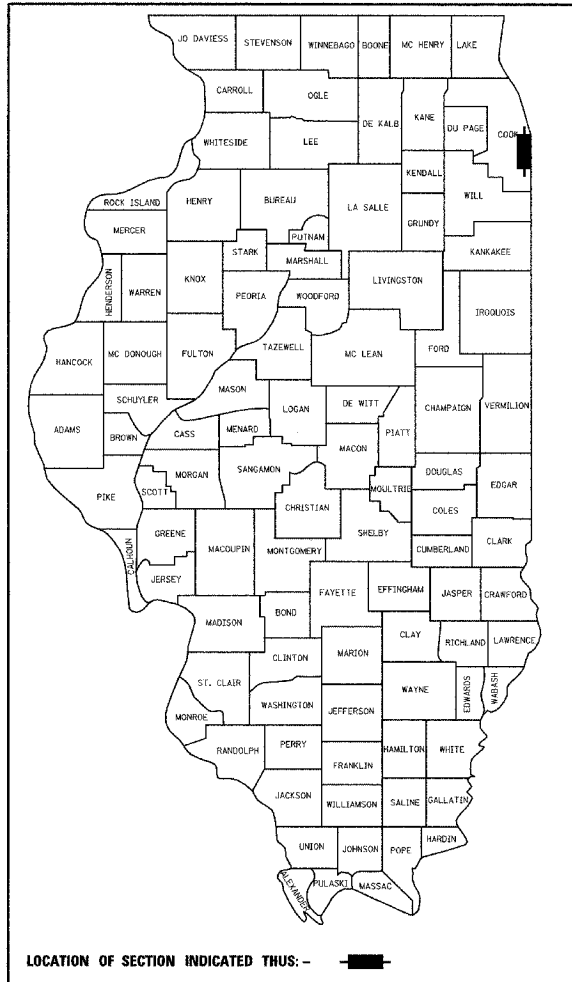
STATE OF ILLINOIS  
DEPARTMENT OF TRANSPORTATION  
DIVISION OF HIGHWAYS

**PROPOSED HIGHWAY PLANS**

F.A.I. ROUTE 94 (DAN RYAN EXPRESSWAY)  
SECTION (1516.1, 1717 & 1818) T-1  
71ST STREET TO I-57 (SB RAMPS, C-D, AND RETAINING WALLS)  
AND 76TH ST BRIDGE RECONSTRUCTION  
SEWER TELEVISIONING - SB DIRECTION

PROJECT:  
COOK COUNTY  
C-91-171-05  
R. 14 E.

F.A.I. RTE.	SECTION	COUNTY	TOTAL SHEETS	SHEET NO.
94		COOK	29	1
FED. ROAD DIST. NO.		ILLINOIS FED. AID PROJECT		
D-91-421-01		(1516.1, 1717 & 1818) T-1	62935	



LOCATION OF SECTION INDICATED THUS: -

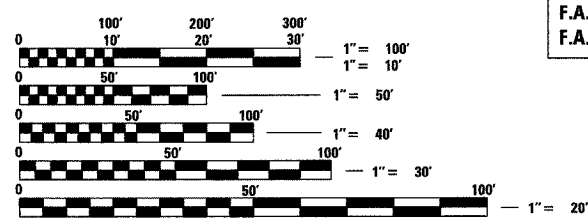
STATE OF ILLINOIS  
DEPARTMENT OF TRANSPORTATION  
DIVISION OF HIGHWAYS

SUBMITTED April 8, 2005  
Diana O'Keefe/AP  
DISTRICT ENGINEER

May 13, 2005  
Mike Hene  
ENGINEER OF DESIGN AND ENVIRONMENT

May 13, 2005  
Victor Moden  
DIRECTOR, DIVISION OF HIGHWAYS

CONTRACT 17F

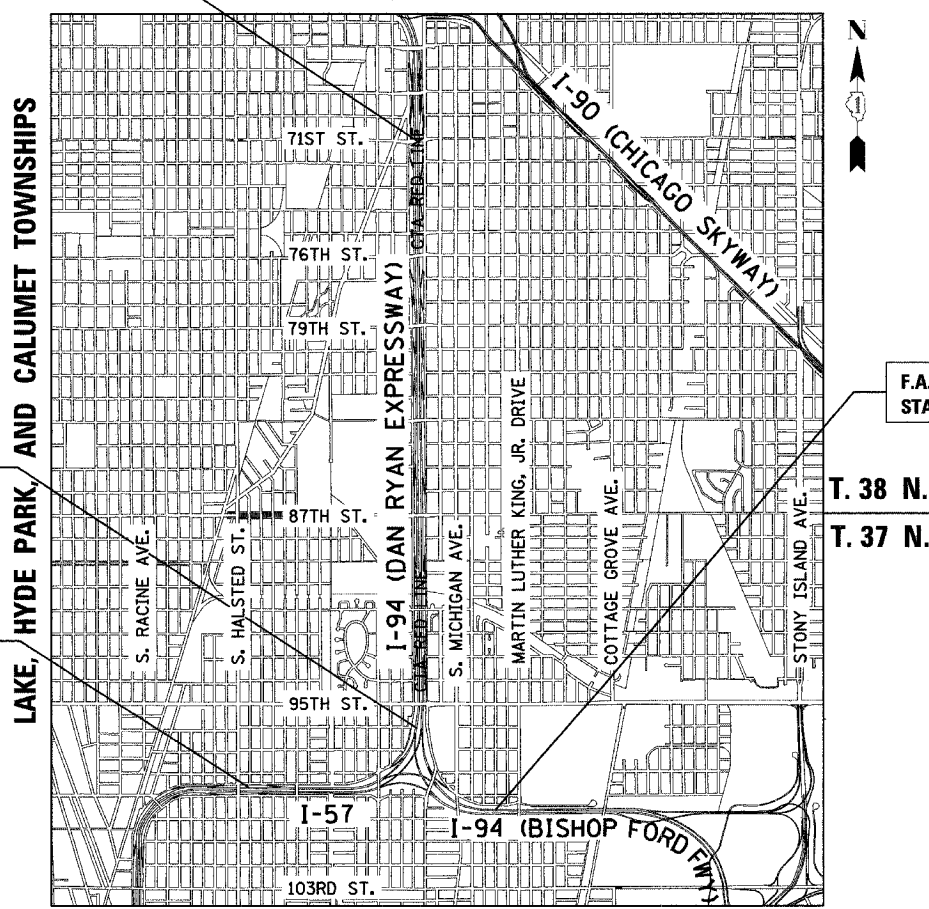


F.A.I. 94 (RYAN) STA. 1200 + 00.00  
F.A.I. 94 (FORD) STA. 1173 + 10.28 =  
F.A.I. 57 STA. 149 + 91.93

F.A.I. 57 PROJECT LIMIT  
STA. 96 + 00 (SB I-57)

F.A.I. 94 PROJECT LIMIT  
STA. 1367 + 00 (SB I-94)

F.A.I. 94 PROJECT LIMIT  
STA. 1126 + 90 (SB I-94)



LOCATION MAP

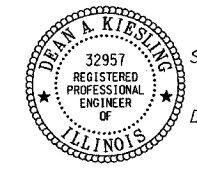
0 1/2 MILE 1 MILE  
MAP SCALE: 1" = 1/2 MILE  
GROSS LENGTH OF PROJECT = 26,712.21 FT. = 5.059 MI.  
NET LENGTH OF PROJECT = 26712.21 FT. = 5.059 MI.

FULL SIZE PLANS HAVE BEEN PREPARED USING STANDARD ENGINEERING SCALES; REDUCED SIZED PLANS WILL NOT CONFORM TO STANDARD SCALES. IN MAKING MEASUREMENTS ON REDUCED PLANS, THE ABOVE SCALES MAY BE USED

DIGGER:  
CHICAGO UTILITY ALERT NETWORK  
(312) 744-7000

CTA CONTACT:  
MARVIN A. WATSON,  
GENERAL MANAGER, CONSTRUCTION  
(312) 681-3860

CONTRACT NO. 62935



Signed Dean A. Kiesel  
Dean A. Kiesel, P.E., Ill. Lic. No. 32957  
Expires 11-30-2005.  
Date APRIL 11, 2005

**TYLIN** INTERNATIONAL  
PRINTED BY THE AUTHORITY OF THE STATE OF ILLINOIS

DISTRICT ONE DESIGN / PROJECT MANAGER:  
BRIAN KUTTAB (847) 705 - 4431