

F.A.P. RTE.	SECTION	COUNTY	TOTAL SHEETS	SHEET NO.
549	116RS-1	OGL	593	214
STA.		TO STA.		
FED. ROAD DIST. NO.		ILLINOIS FED. AID PROJECT		

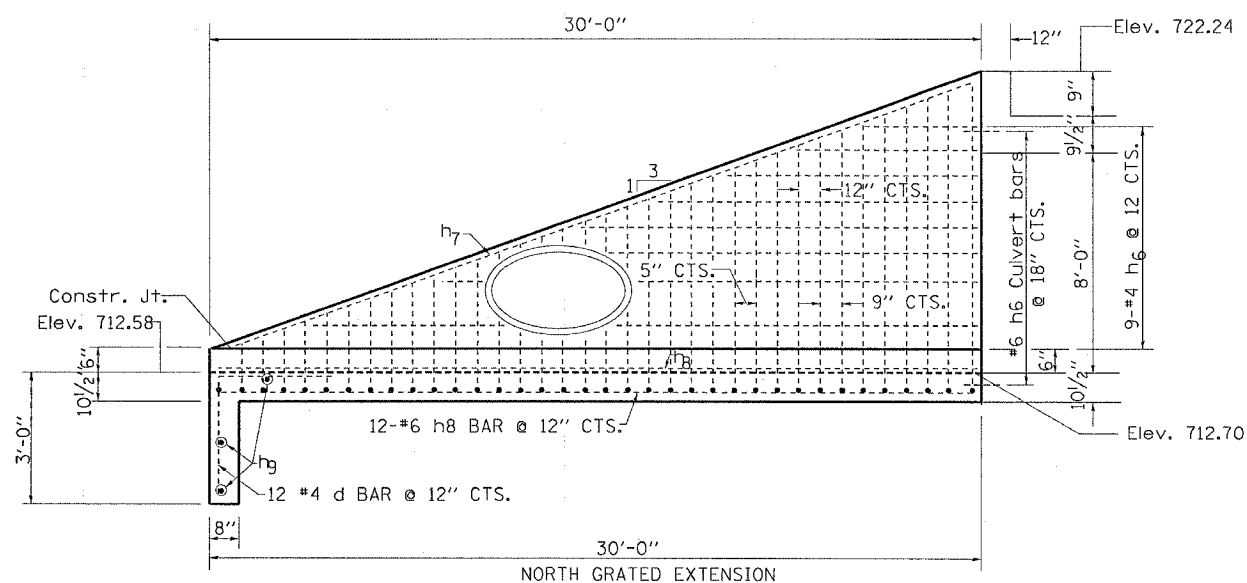
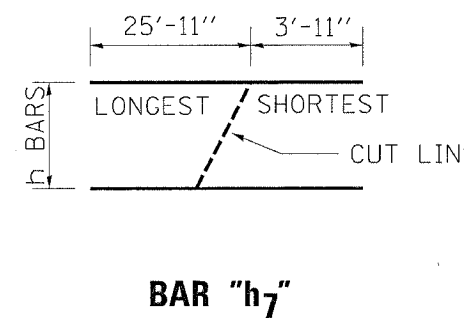
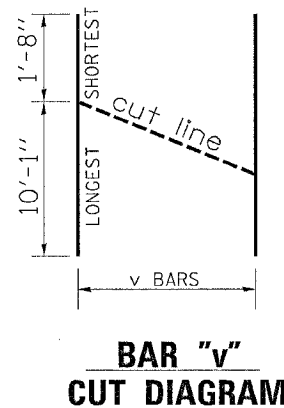
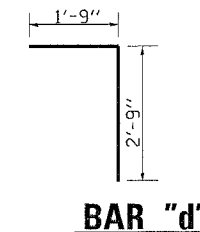
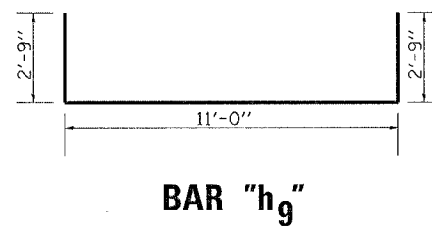
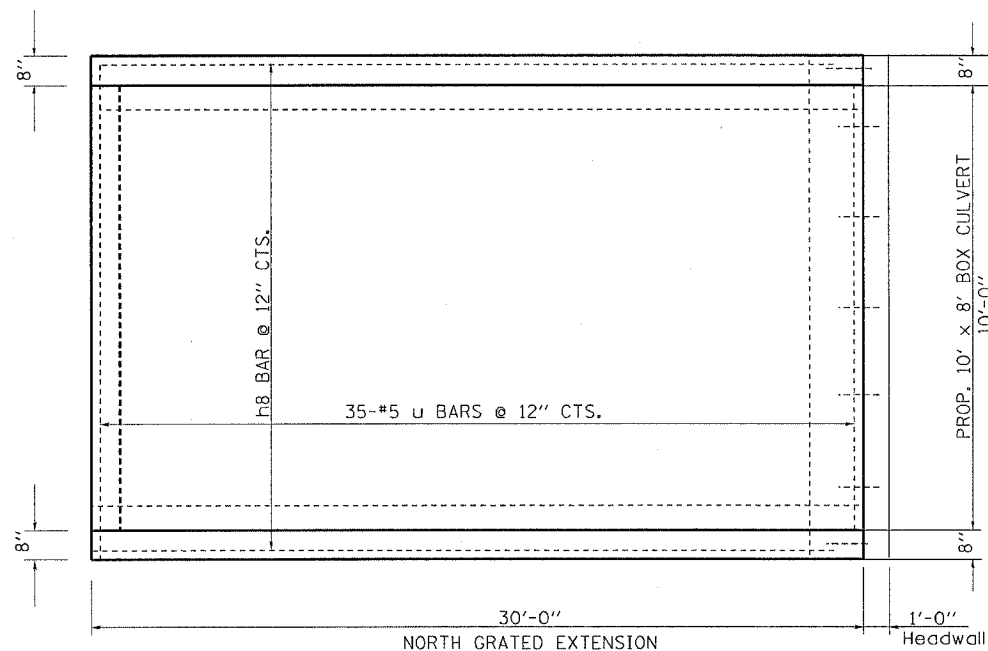
CONCRETE BOX CULVERT END SECTION

NORTH SIDE STA 732+53 LT

BILL OF MATERIALS

NORTHSIDE GRATED EXTENSION ONLY

BAR	NUMBER	SIZE	LENGTH	QTY.
d	12	#4	4'-6"	36.07
h ₆	10	#4	30'-0"	200.40
h ₇	2	#4	30'-11"	41.30
h ₈	14	#4	29'-6"	275.88
h ₉	3	#4	11'-0"	22.04
u	35	#6	16'-6"	867.41
v	31	#5	11'-9"	379.91
REINFORCEMENT BARS			LB	1823.02
CONCRETE BOX CULVERTS			CU YD	17.4



GENERAL NOTES:

STEEL PIPES SHALL CONFORM TO A.S.T.M. A-53 (TYPE E OR S) GRADE B, SCHEDULE 40, & SHALL BE GALVANIZED CONFORMING TO A.S.T.M. A-120.

6" OF COMPACTED CA-7 AGGREGATE SHALL BE PLACED BENEATH THE EXTENSION

THE CONTRACT UNIT PRICE "CU YD" FOR CONCRETE BOX CULVERTS SHALL INCLUDE THE EARTH EXCAVATION, BACKFILLING, COMPACTED CA-7 AGGREGATE BEDDING MATERIAL AND NECESSARY GRADING.

REINFORCEMENT BARS WILL BE PAID FOR SEPARATELY

ORDER v AND h BARS FULL LENGTH. CUT TO FIT AS SHOWN AND USE REMAINDER OF BARS IN OPPOSITE WALL.