

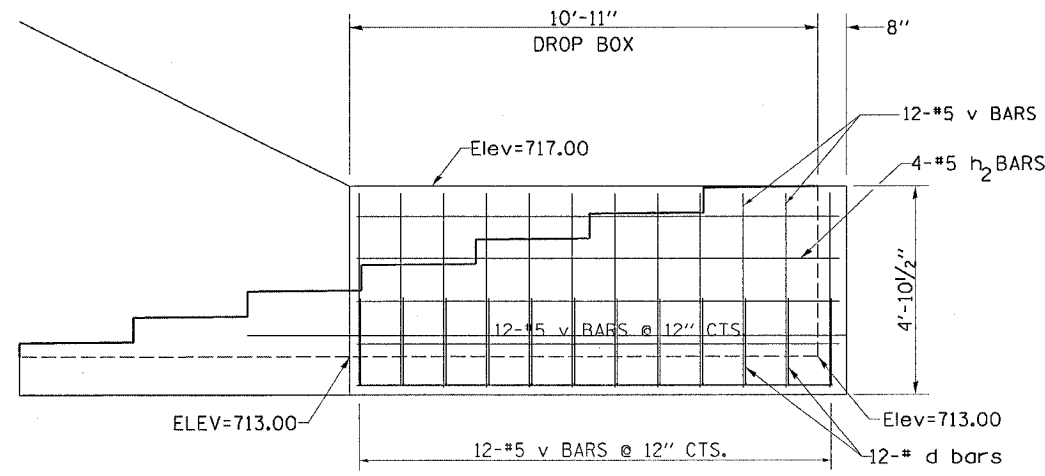
F.A.P. RTE.	SECTION	COUNTY	TOTAL SHEETS	SHEET NO.
549	116RS-1	OGLE	593	216
STA.		TO STA.		
FED. ROAD DIST. NO.		ILLINOIS	FED. AID PROJECT	

# CONCRETE BOX CULVERT DROP BOX STA 732+53 RT

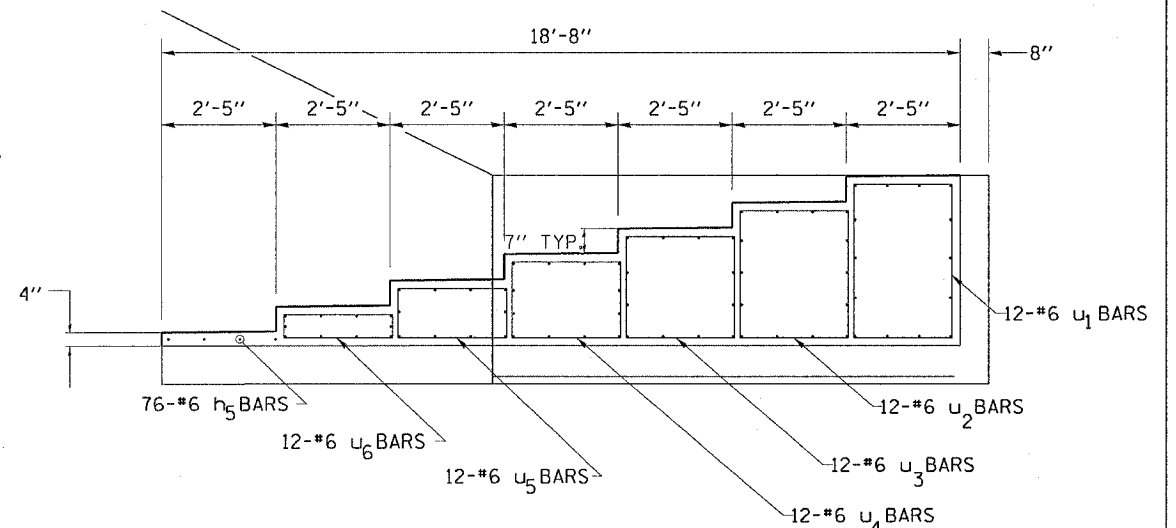
### BILL OF MATERIALS

BAR	NUMBER	SIZE	LENGTH
a <sub>1</sub>	21	#8	13'-6"
a <sub>2</sub>	8	#4	10'-4"
d	43	#5	4'-0"
h <sub>1</sub>	20	#5	11'-3.5"
h <sub>2</sub>	8	#5	11'-3.5"
h <sub>3</sub>	4	#5	11'-0"
v	35	#5	4'-6"
u <sub>1</sub>	12	#6	7'-2"
u <sub>2</sub>	12	#6	6'-8"
u <sub>3</sub>	12	#6	6'-2"
u <sub>4</sub>	12	#6	5'-1"
u <sub>5</sub>	12	#6	4'-4"
u <sub>6</sub>	12	#6	2'-6"
h <sub>4</sub>	6	#5	31'-8"
h <sub>5</sub>	76	#5	4'-6"
d <sub>1</sub>	18	#5	3'-0"

DESCRIPTION	UNIT	QTY.
CONCRETE BOX CULVERTS	CU YD	7.1
Reinforcement Bars	LB	3290.58



**SIDE ELEVATION**



**STEPS SIDE ELEVATION**

### GENERAL NOTES:

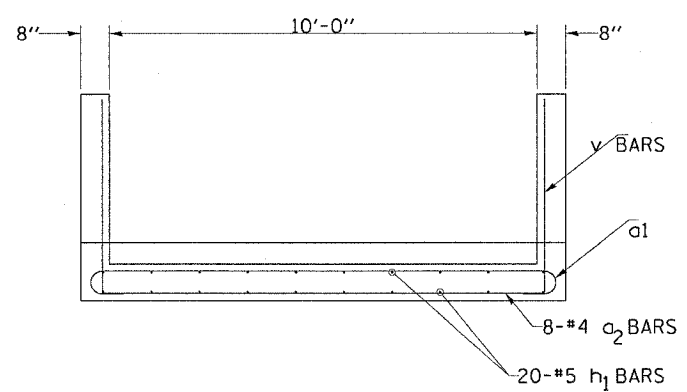
6" Compacted CA-7 gravel shall be placed beneath drop boxes (See Culvert Extension Detail)

Class "SI" concrete shall be used throughout. Exposed edges shall be beveled 3/4".

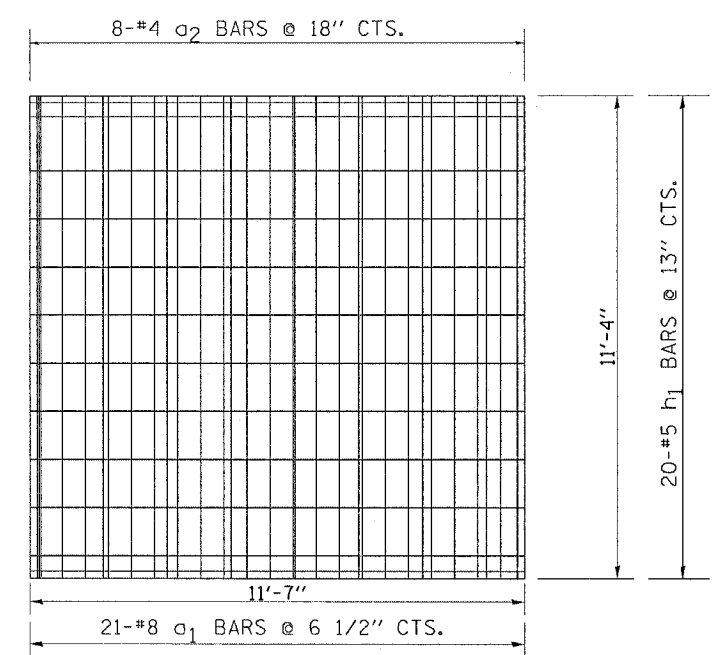
All work and materials incorporated into the construction of the Concrete Box Culvert, the end sections and drop box will be paid for at the contract unit price "cu yd" for CONCRETE BOX CULVERTS.

Reinforcement bars, Rem. of unsuitable mat'l, and breaker-run will be paid for Separately.

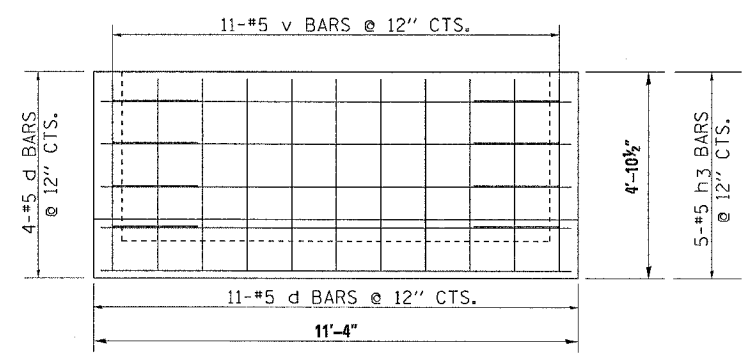
Reinforcement bars shall conform to the requirements of AASHTO M-31 or M-53, grade 60.



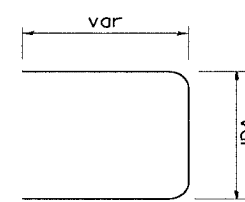
**FRONT ELEVATION**



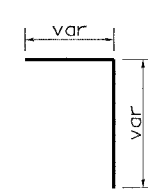
**BOTTOM**



**BACK ELEVATION**



**u BARS**



**d BARS**

REVISIONS	
NAME	DATE

ILLINOIS DEPARTMENT OF TRANSPORTATION

SCALE: VERT. \_\_\_\_\_  
HORIZ. \_\_\_\_\_

DATE \_\_\_\_\_ DRAWN BY \_\_\_\_\_  
CHECKED BY \_\_\_\_\_