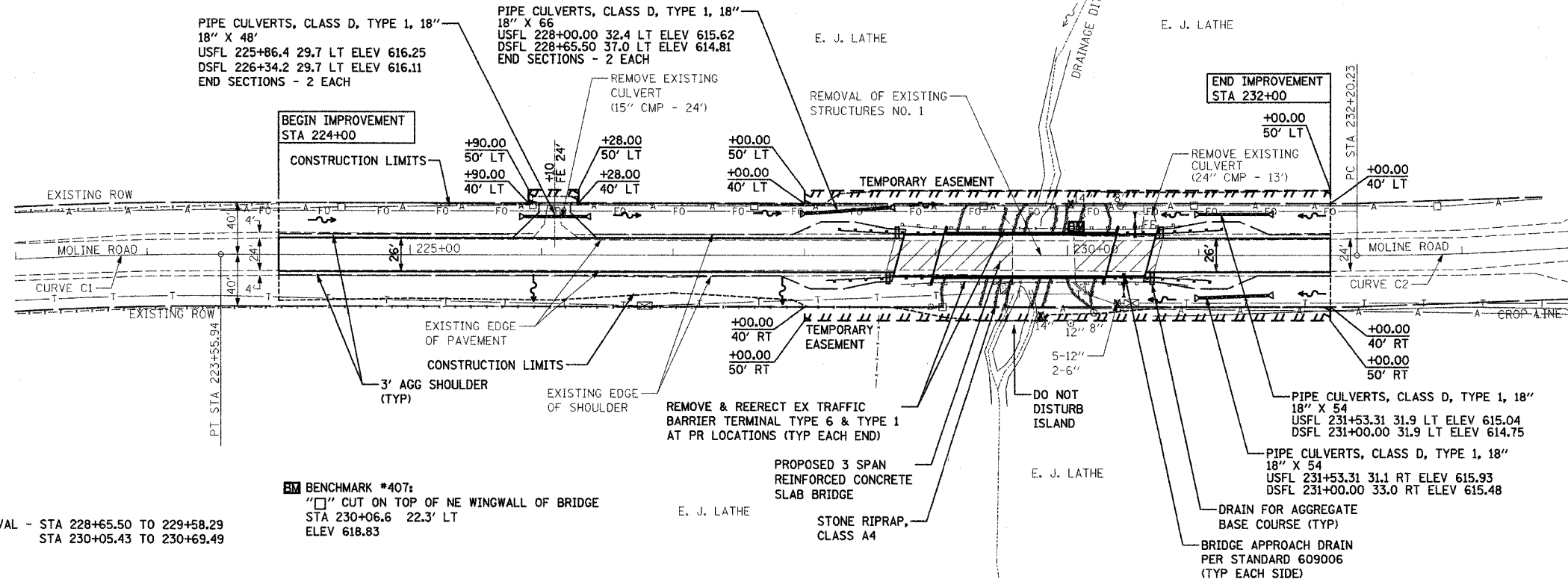


F.A.S. RTE.	SECTION	COUNTY	TOTAL SHEETS	SHEET NO.
1197	105 BR-2	WHITESIDE	59	11
STA. 224+00		TO STA. 232+00		
FED. ROAD DIST. NO.		ILLINOIS	FED. AID PROJECT	
CONTRACT 64421				

PLAN	SURVEYED	DATE
	PLOTTED	
	CHECKED	
	FILED	
	NO. OF DAYS CHECKED	
	CADD FILE NAME	

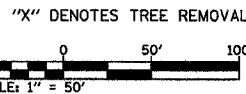
EXIST. CURVE C1  
 PI STA. = 220+67.76  
 $\Delta = 11^\circ 34' 00''$  (RT)  
 $D = 2^\circ 00' 00''$   
 $R = 2,864.79'$   
 $T = 290.15'$   
 $L = 578.33'$   
 $E = 14.66'$   
 P.C. STA. = 217+77.61  
 P.T. STA. = 223+55.94



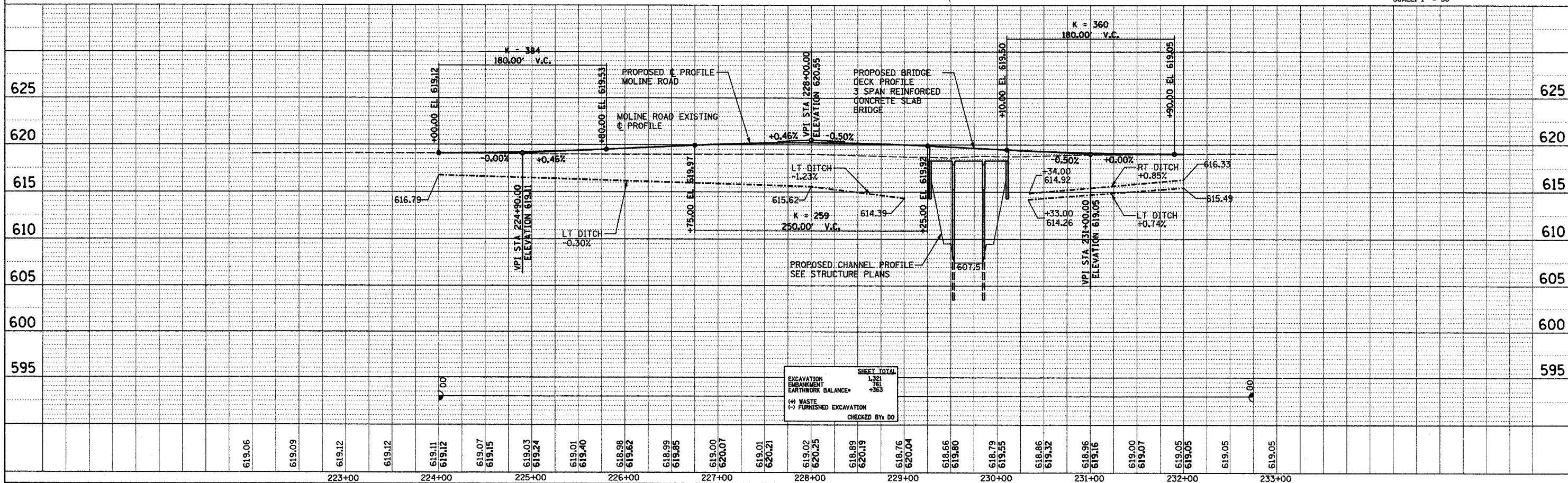
PAVEMENT REMOVAL - STA 228+65.50 TO 229+58.29  
 STA 230+05.43 TO 230+69.49

BENCHMARK #407:  
 "X" CUT ON TOP OF NE WINGWALL OF BRIDGE  
 STA 230+06.6 22.3' LT  
 ELEV 618.83

EXIST. CURVE C2  
 PI STA. = 234+44.16  
 $\Delta = 11^\circ 54' 00''$  (LT)  
 $D = 2^\circ 40' 00''$   
 $R = 2,148.59'$   
 $T = 223.93'$   
 $L = 446.25'$   
 $E = 11.64'$   
 P.C. STA. = 232+20.23  
 P.T. STA. = 236+66.48



PROFILE	SURVEYED	DATE
	PLOTTED	
	CHECKED	
	FILED	
	NO. OF DAYS CHECKED	
	STRUCTURE NOTATION: CP10	



EXCAVATION	1,321
EMBANKMENT	761
EARTHWORK BALANCE	+563
WASTE	
FURNISHED EXCAVATION	
CHECKED BY: DO	