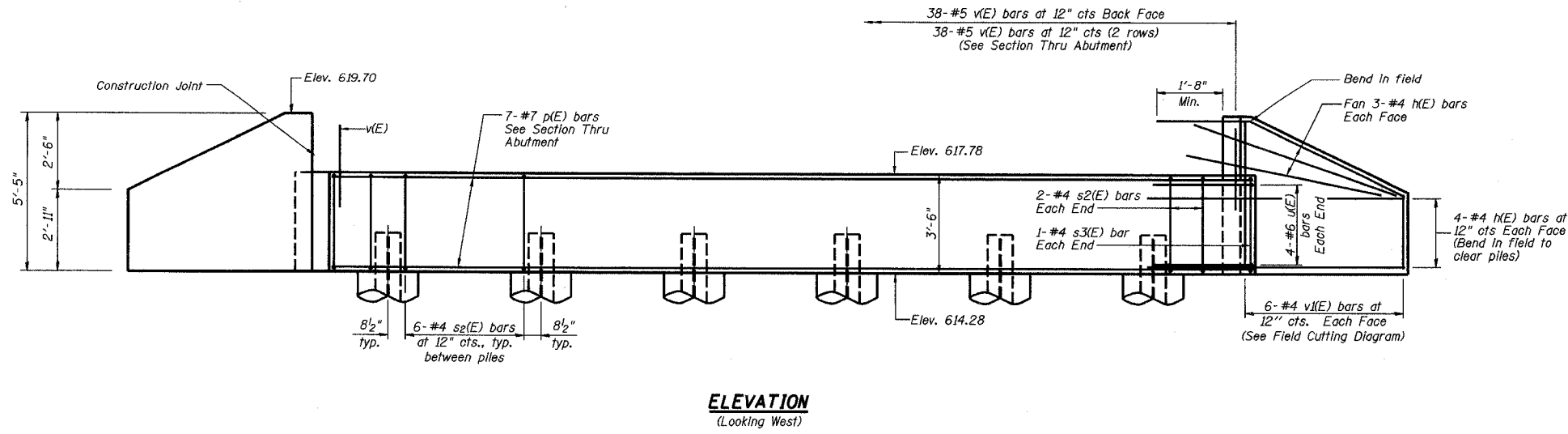


STATE OF ILLINOIS
DEPARTMENT OF TRANSPORTATION

Sheet No. 7
of 11 Sheets

ROUTE NO.	SECTION	COUNTY	TOTAL SHEETS	SHEET NO.
FAS 1197	105BR-2	WHITESIDE	59	22
FED. ROAD DIST. NO.	ILLINOIS	PROJECT		

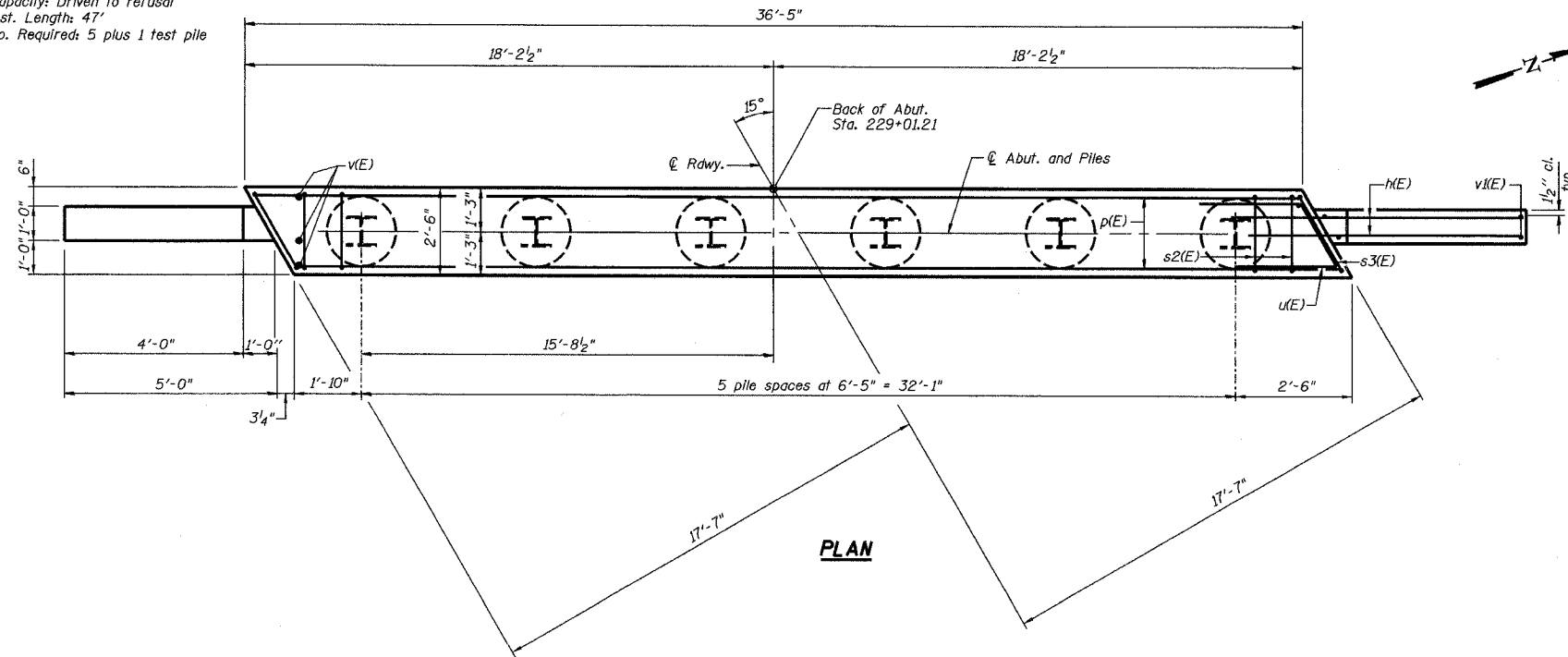
CONTRACT 64421



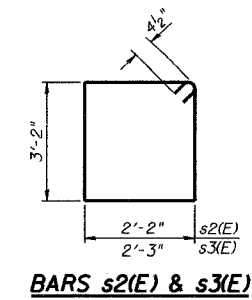
ELEVATION
(Looking West)

PILE DATA

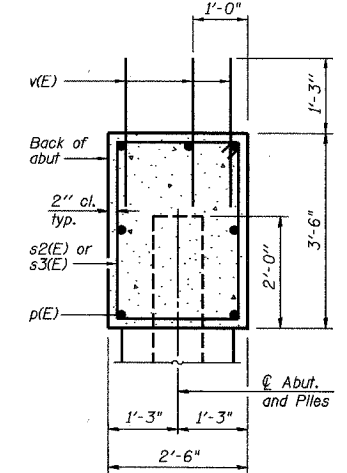
Type: HP12x63
Capacity: Driven to refusal
Est. Length: 47'
No. Required: 5 plus 1 test pile



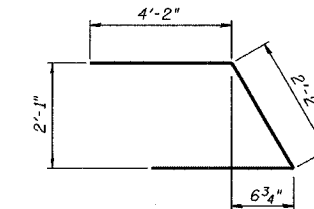
PLAN



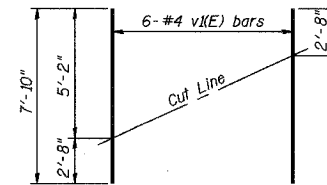
BARS s2(E) & s3(E)



SECTION THRU ABUTMENT



BAR u(E)



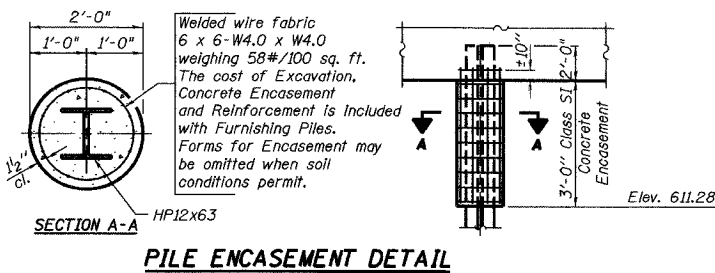
FIELD CUTTING DIAGRAM

Order v1(E) full length. Cut as shown and use remainder of bars in opposite face.

BILL OF MATERIAL

Bar	No.	Size	Length	Shape
h(E)	28	#4	7'-3"	—
p(E)	7	#7	36'-1"	—
s2(E)	34	#4	11'-5"	□
s3(E)	2	#4	11'-7"	□
u(E)	8	#6	10'-6"	∟
v(E)	114	#5	3'-5"	—
v1(E)	12	#4	7'-10"	—
Structure Excavation		Cu. Yd.	35	
Concrete Structures		Cu. Yd.	13.4	
Reinforcement Bars, Epoxy Coated		Pound	1520	
Furnishing Steel Piles HP12x63		Foot	235	
Driving Steel Piles HP12x63		Foot	235	
Test Pile Steel HP12x63		Each	1	

Reinforcement bars designated (E) shall be epoxy coated.



PILE ENCASEMENT DETAIL

WEST ABUTMENT DETAILS

REVISIONS No. DATE INITIALS 1 2 3 4 5 6 7 8 9 10 11 12		MOLINE ROAD OVER UNNAMED TRIBUTARY TO ROCK RIVER FAS ROUTE 1197 SECTION 105BR-2 STA 229+67.50 SN 098-0110 WHITESIDE COUNTY HOMER L. CHASTAIN & ASSOCIATES, LLP CONSULTING ENGINEERS 184-001337		DRAWN BY DATE R King 8/04 CHECKED BY DATE CMV 8/04 G.A.C. BY DATE CWC 8/04 BOOK NUMBER PROJECT No. 4858-3 SHEET No.
--	--	--	--	---