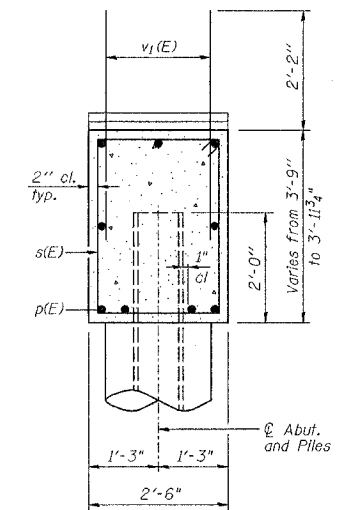
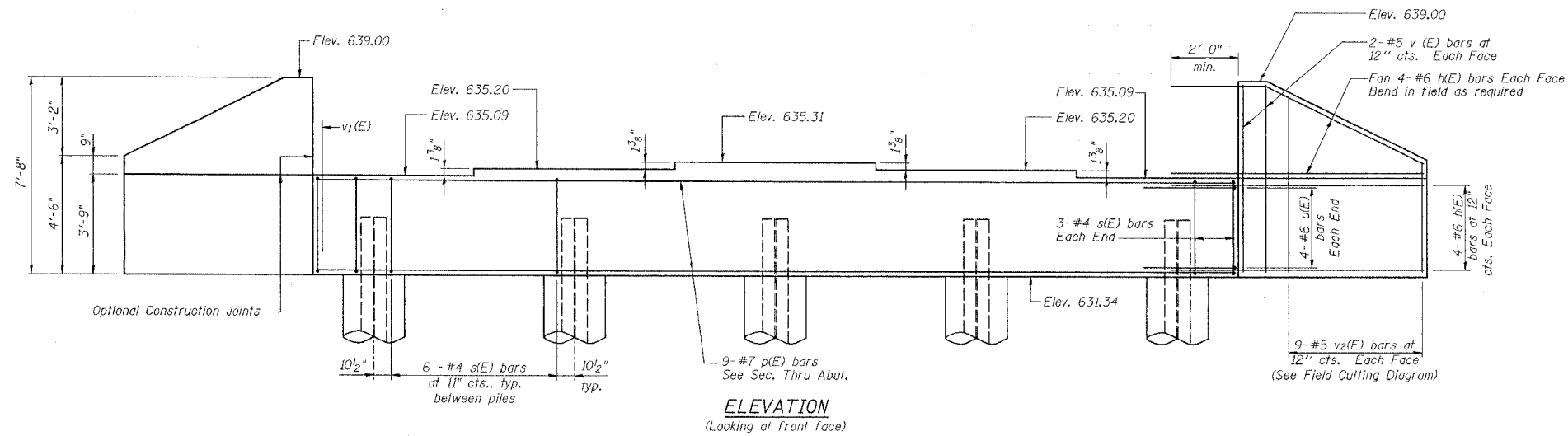


STATE OF ILLINOIS  
DEPARTMENT OF TRANSPORTATION

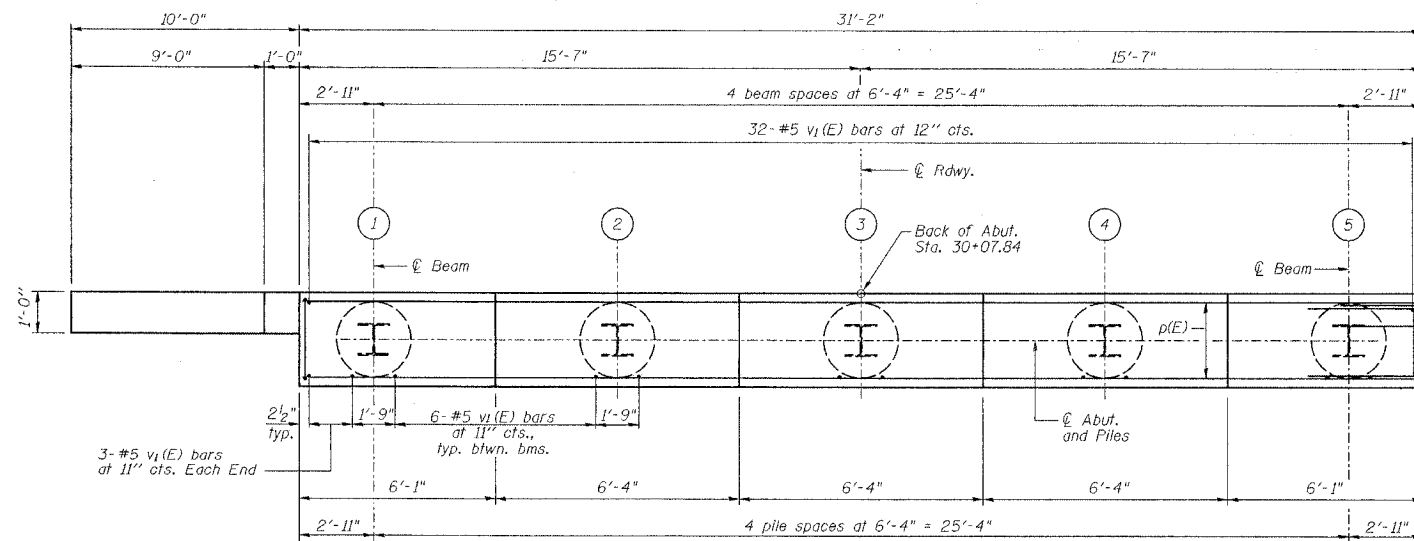
Sheet No. 11  
of 16 Sheets

ROUTE NO.	SECTION	COUNTY	TOTAL SHEETS	SHEET NO.
SBI 88	103C-BR	BUREAU	51	22
FED. ROAD DIST. NO.		LL. NO.	PROJECT	
CONTRACT #64423				



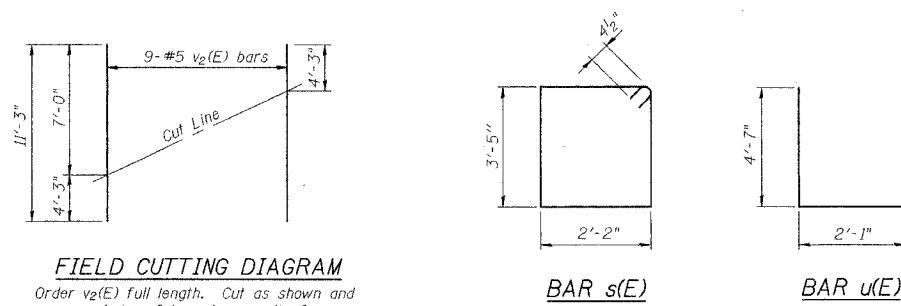
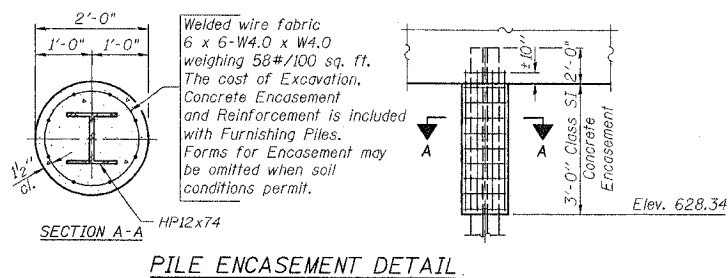
**PILE DATA**

Type: Steel HP 12x74  
Capacity: 50 T design driven to 87 T bearing  
Est. Length: 87'  
No. Required: 4 plus 1 test pile  
Negative Skin Friction Allowance = 12 T



**BILL OF MATERIAL**

Bar	No.	Size	Length	Shape
u(E)	32	#6	12'-4"	—
p(E)	9	#7	30'-10"	—
s(E)	30	#4	11'-11"	□
u(E)	8	#6	11'-3"	—
v(E)	8	#5	7'-4"	—
v1(E)	62	#5	4'-4"	—
v2(E)	18	#5	11'-3"	—
Concrete Structures	Cu. Yd.	13.8		
Reinforcement Bars, Epoxy Coated	Pound	2090		
Structure Excavation	Cu. Yd.	87		
Test Pile Steel HP12x74	Each	1		
Furnishing Steel Piles HP12x74	Foot	348		
Driving Steel Piles	Foot	348		



**NOTES**

Pour steps monolithically with cap.  
Reinforcement bars designated (E) shall be epoxy coated.

NEW BEDFORD ROAD OVER GREEN RIVER

REVISIONS		STATE OF ILLINOIS DEPARTMENT OF TRANSPORTATION DIVISION OF HIGHWAYS		DATE
NO.	DATE	INITIALS		
1				
2				
3				
4				
5				
6				
7				
8				
9				
10				
11				
12				

SBI 88 SPUR	SECTION 103C-BR	PROJECT NO. 4858-1
STA 29+25.34	BUREAU COUNTY	SHEET NO.
HOMER L. CHASTAIN & ASSOCIATES, LLP CONSULTING ENGINEERS 184-001397		