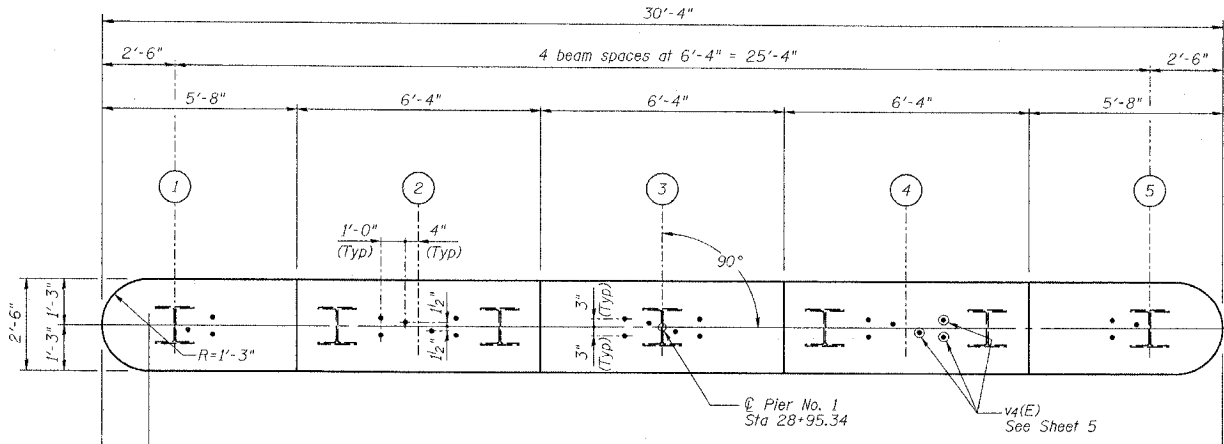


STATE OF ILLINOIS  
DEPARTMENT OF TRANSPORTATION

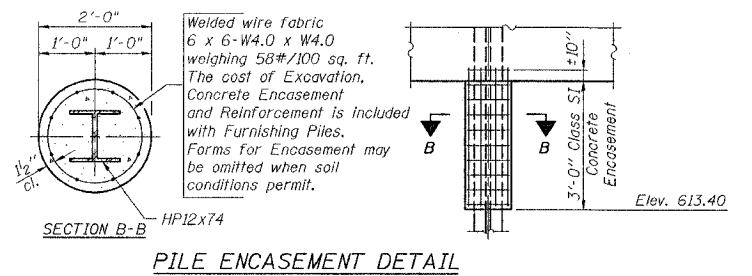
Sheet No. 12  
of 16 Sheets

ROUTE NO.	SECTION	COUNTY	TOTAL SHEETS	SHEET NO.
SBI 88	103C-BR	BUREAU	51	23
FEDERAL DIST. NO.	ILLINOIS	PROJECT	CONTRACT #64423	

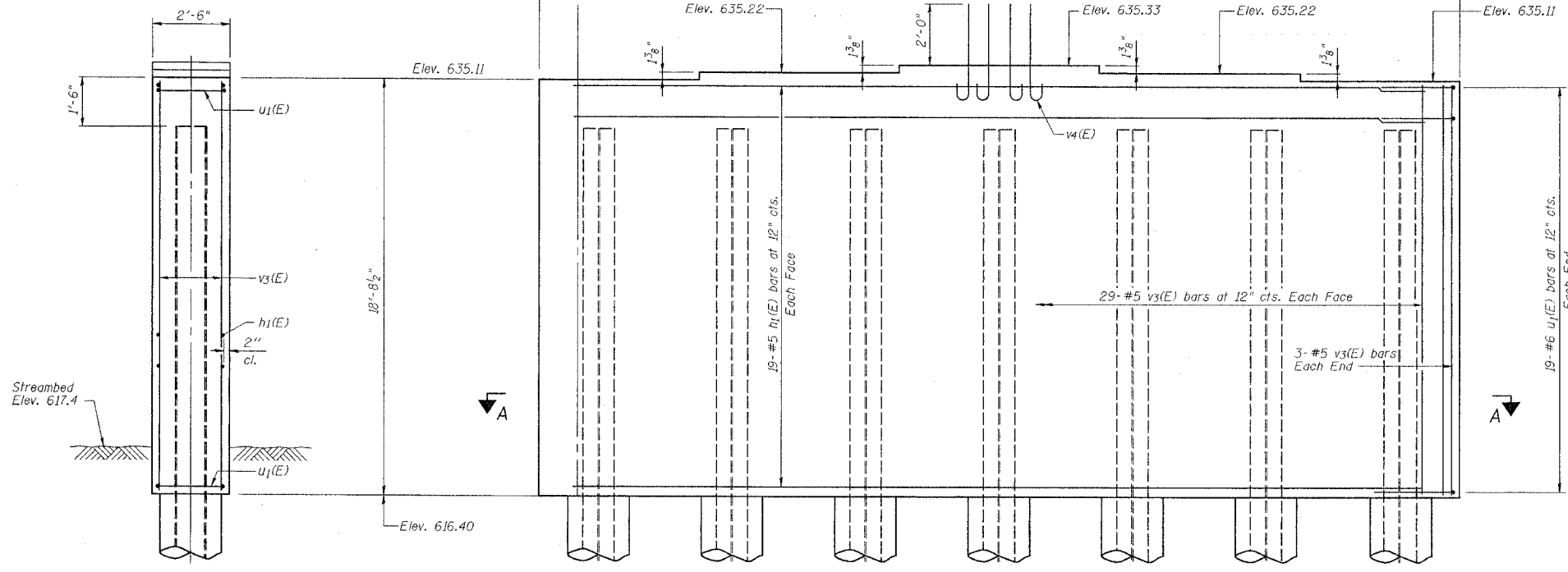
**PILE DATA**  
Type: Steel HP12x74  
Capacity: 60 T design driven to 90 T bearing  
Est. Length: 117'  
No. Req'd: 6 plus one test pile



TOP PLAN

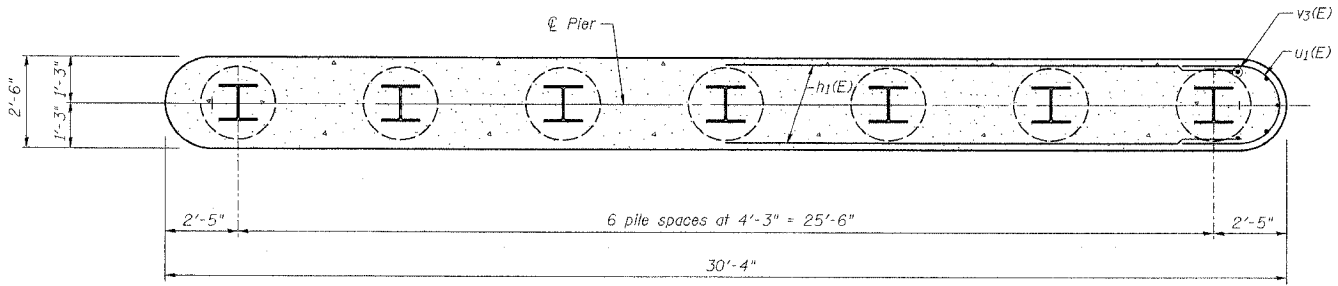


PILE ENCASEMENT DETAIL

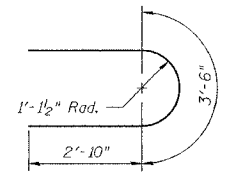


ELEVATION  
(Looking Up Station)

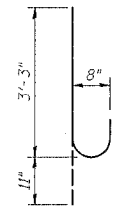
END VIEW



SECTION A-A



BAR u1(E)



BAR v4(E)

**BILL OF MATERIAL**

Bar	No.	Size	Length	Shape
h1(E)	38	#5	27'-10"	—
u1(E)	38	#6	9'-2"	U
v3(E)	64	#5	18'-6"	—
v4(E)	24	#8	4'-2"	U
Structure Excavation			Cu. Yd.	9
Concrete Structures			Cu. Yd.	51.9
Reinforcement Bars, Epoxy Coated			Pound	3130
Furnishing Steel Piles HP12x74			Foot	702
Driving Steel Piles			Foot	702
Test Pile Steel HP12x74			Each	1
Underwater Structure Excavation Protection - Location 1			Each	1

Reinforcement Bars designated (E) shall be epoxy coated.

**NOTES**

Four steps monolithically with cap.  
Space reinforcement in cap to miss anchor bolts.

NEW BEDFORD ROAD OVER GREEN RIVER

PIER NO. 1 DETAILS

REVISIONS	STATE OF ILLINOIS DEPARTMENT OF TRANSPORTATION DIVISION OF HIGHWAYS	DRAWN BY DATE R King 4/04
1	SBI 88 SPUR	CHECKED BY DATE CMV 4/04
2	SECTION 103C-BR	DATE BY DATE BWP 4/04
3	SN 006-0163	BOOK NUMBER
4	STA 29+25.34	PROJECT NO. 4858-1
5	BUREAU COUNTY	SHEET NO.
6	HOMER L. CHASTAIN & ASSOCIATES, LLP CONSULTING ENGINEERS 184-001397	