

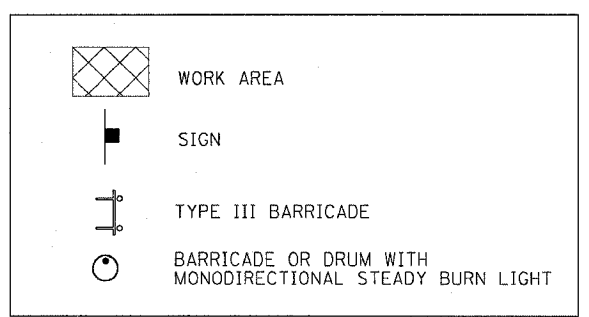
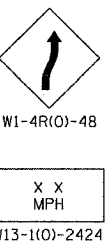
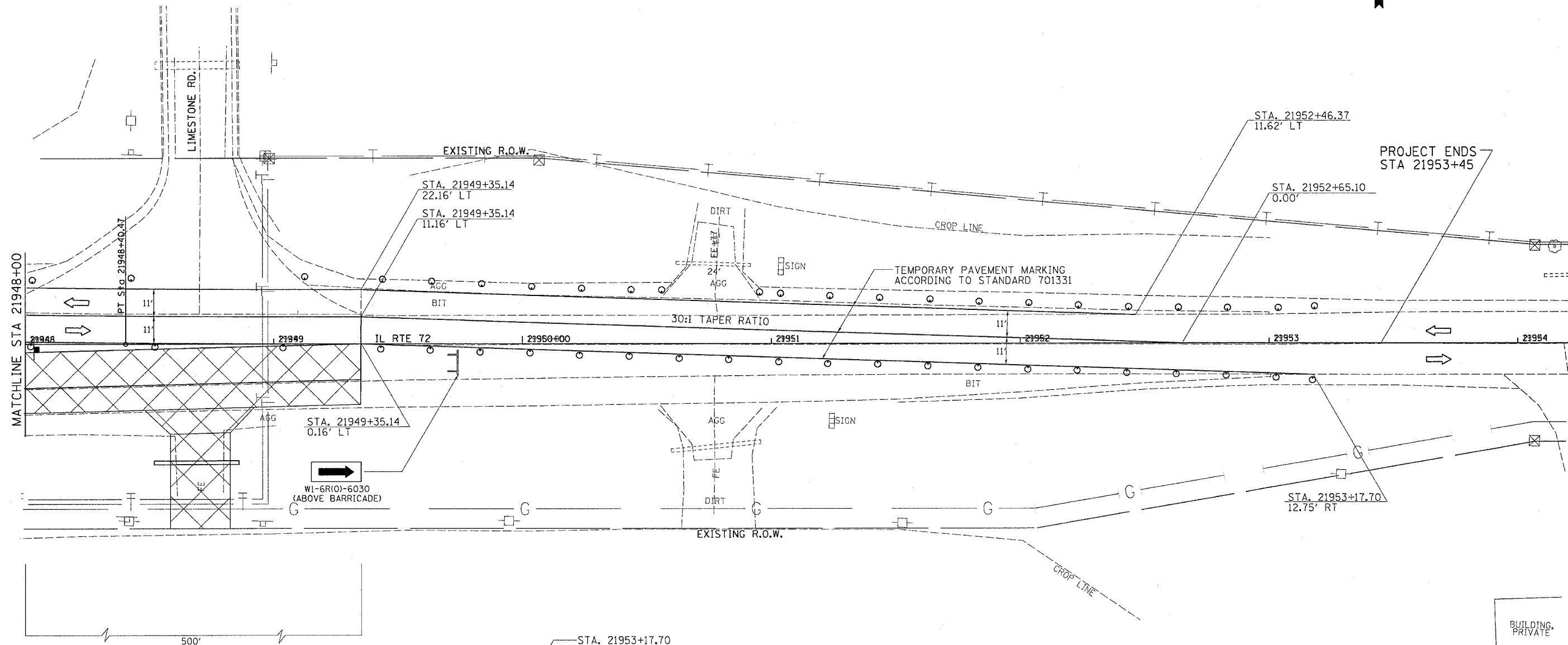
F.A.P. RTE.	SECTION	COUNTY	TOTAL SHEETS	SHEET NO.
553	120RS-3	OGLE	145	77
STA.		TO STA.		
FED. ROAD DIST. NO.		ILLINOIS FED. AID PROJECT		

**STAGE 5:**

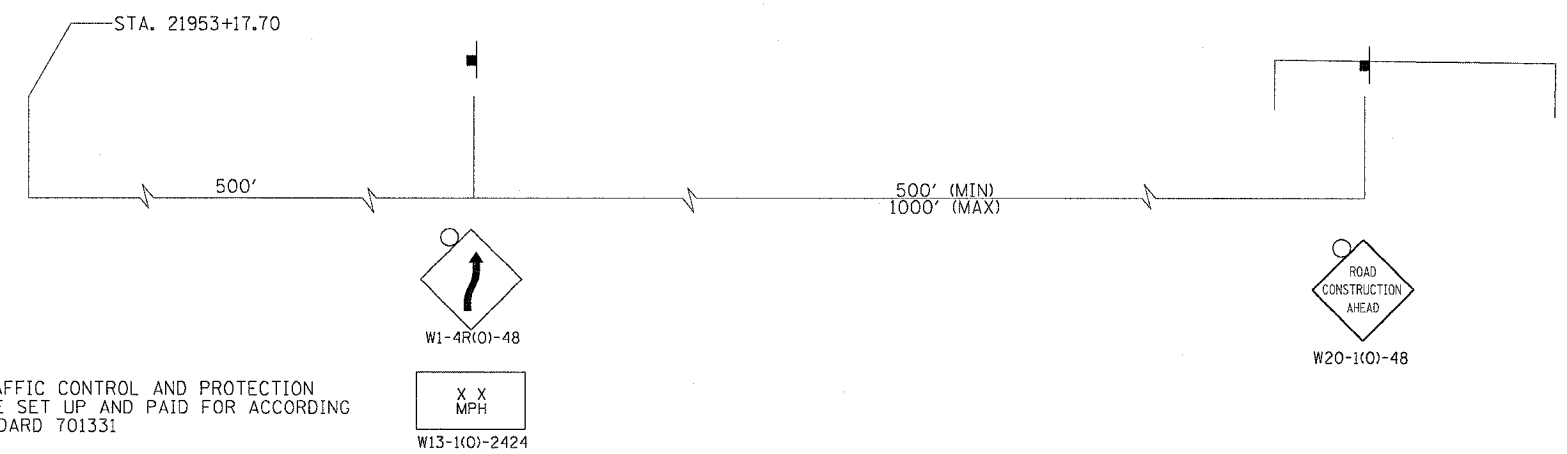
FOR CONSTRUCTION OF MEDIANS, TEMPORARY TRAFFIC CONTROL SIGNS SHALL BE FURNISHED AND PLACED ACCORDING TO STD. 701201-01  
 SHOULDERS ARE TO BE UTILIZED TO KEEP TRAFFIC FLOWING IN BOTH DIRECTIONS.  
 TRAFFIC CONTROL AND PROTECTION SHALL BE SET UP AND PAID FOR ACCORDING TO STANDARD 701201-01

**STAGE 6:**

FOR CONSTRUCTION OF SURFACE COURSE, TEMPORARY TRAFFIC CONTROL SIGNS SHALL BE FURNISHED AND PLACED ACCORDING TO STD. 701306  
 SHOULDERS ARE TO BE UTILIZED TO KEEP TRAFFIC FLOWING IN BOTH DIRECTIONS.  
 TRAFFIC CONTROL AND PROTECTION SHALL BE SET UP AND PAID FOR ACCORDING TO STANDARD 701306.



**NOTE:**  
 THIS TRAFFIC CONTROL AND PROTECTION SHALL BE SET UP AND PAID FOR ACCORDING TO STANDARD 701331



PLOT DATE = Mon, Mar 28 14:47:34 2005  
 FILE NAME = c:\p\o\m\19\p216208\116208a.dgn  
 PLOT SCALE = 20:8000 1/4 IN.