

| F.A.P. RTE. | SECTION | COUNTY     | TOTAL SHEETS | SHEET NO. |
|-------------|---------|------------|--------------|-----------|
| 650         | 104-T-1 | JO DAVIESS | 24           | 1         |

STATE OF ILLINOIS  
DEPARTMENT OF TRANSPORTATION  
DIVISION OF HIGHWAYS

**PROPOSED  
HIGHWAY PLANS**

FAP ROUTE 650 (IL 78)  
SECTION 104-T-1

JO DAVIESS COUNTY

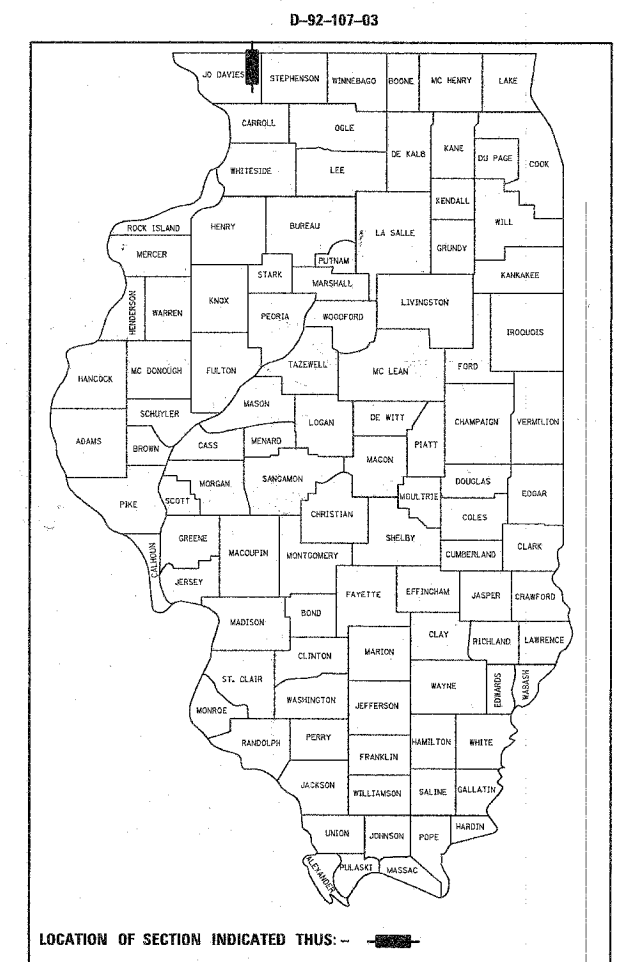
C-92-088-05

INDEX OF SHEETS

- 1 COVER SHEET
- 2-4 GENERAL NOTES
- 5 SUMMARY OF QUANTITIES
- 6-8 TYPICAL SECTIONS
- 9 SCHEDULE OF QUANTITIES
- 10 PLAN & PROFILE
- 11 DETOUR MAP & TRAFFIC CONTROL
- 12 EROSION DETAILS
- 12 SEEDING DETAILS
- 12 R.O.W. DETAILS
- 13 PATCH DETAILS
- 14 SOIL BORING LOGS
- 15 DELINEATOR AND POST ORIENTATION (37.4)
- 15 TREE REPLACEMENT SCHEDULE (90.4)
- 15 EROSION CONTROL DETAILS FOR SILT FENCE (29.2)
- 16-17 TRAFFIC CONTROL FOR ROAD CLOSURE (40.1)
- 18-19 TYPICAL PAVEMENT MARKING (41.1)
- 20 DETAIL OF PRECAST CONCRETE BOX CULVERTS AND END SECTIONS (71.1)
- 21 DETAILS OF PLANTING AND BRACING TREES (92.1)
- 22-24 CROSS SECTIONS

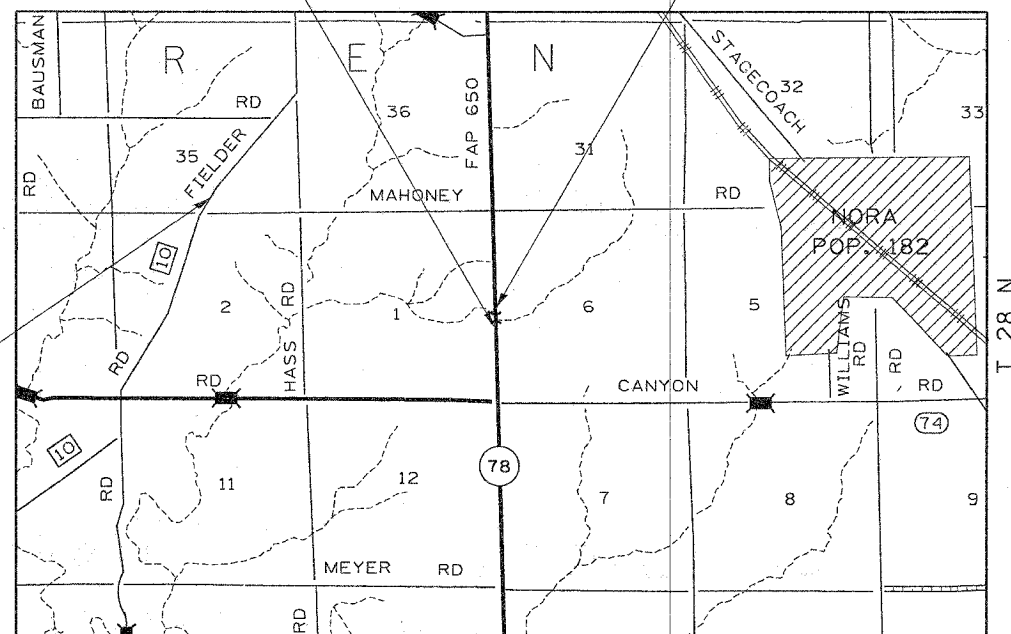
STATE STANDARDS

- 000001-01 STANDARD SYMBOLS, ABBREVIATIONS, AND PATTERNS
- 280001-02 TEMPORARY EROSION CONTROL SYSTEMS
- 420001-05 PAVEMENT JOINTS
- 420701-01 PAVEMENT FABRIC
- 442101-05 CLASS B PATCHES
- 542101 REINFORCED CONCRETE END SECTIONS FOR PIPE CULVERTS 375 mm (15") THRU 900 mm (36") DIA. AT RIGHT ANGLES WITH ROADWAY
- 542301 PRECAST REINFORCED CONCRETE FLARED END SECTION
- 542401 METAL END SECTIONS FOR PIPE CULVERTS
- 666001 RIGHT OF WAY MARKERS
- 701201-02 TYPICAL APPLICATION OF TRAFFIC CONTROL DEVICES
- 701301-02 TYPICAL APPLICATION OF TRAFFIC CONTROL DEVICES
- 701311-02 TYPICAL APPLICATION OF TRAFFIC CONTROL DEVICES
- 702001-05 TRAFFIC CONTROL DEVICES
- 780001-01 TYPICAL PAVEMENT MARKINGS

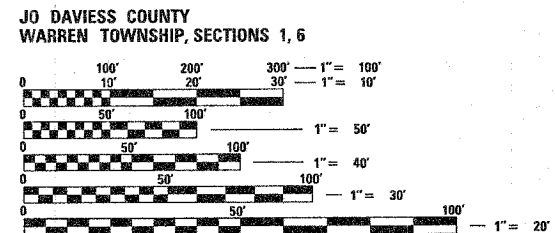


IMPROVEMENT BEGINS STA. 1050+00

IMPROVEMENT ENDS STA. 1055+00



36' PIPE CULVERT, CLASS A, TYPE 1 24"  
1.2 MILES NORTH OF CANYON RD ON FIELDER RD  
2 EACH END SECTIONS 24"



FULL SIZE PLANS HAVE BEEN PREPARED USING STANDARD ENGINEERING SCALES. REDUCED SIZED PLANS WILL NOT CONFORM TO STANDARD SCALES. IN MAKING MEASUREMENTS ON REDUCED PLANS, THE ABOVE SCALES MAY BE USED.

GROSS LENGTH OF IMPROVEMENT = 500' = 0.095 MILES  
NET LENGTH OF IMPROVEMENT = 500' = 0.095 MILES

J.U.L.I.E.  
JOINT UTILITY LOCATION INFORMATION FOR EXCAVATION  
1-800-892-0123

STATE OF ILLINOIS  
DEPARTMENT OF TRANSPORTATION  
DIVISION OF HIGHWAYS

SUBMITTED March 30, 2005  
Gregory L. Mountain  
DEPUTY DIRECTOR OF HIGHWAYS, REGION ENGINEER

May 13, 2005  
Mike Hine  
ENGINEER OF DESIGN AND ENVIRONMENT

May 13, 2005  
Victor Mader  
DIRECTOR OF HIGHWAYS, CHIEF ENGINEER

PRINTED BY THE AUTHORITY  
OF THE STATE OF ILLINOIS

PLANS ENGINEER ROBERT WAGNER  
 THOMAS HALLA  
 SENIOR ENGINEER  
 PHONE (815)-284-5993