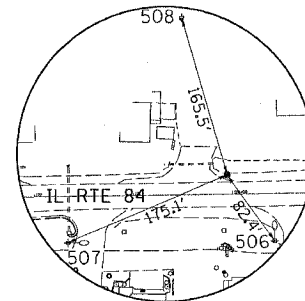


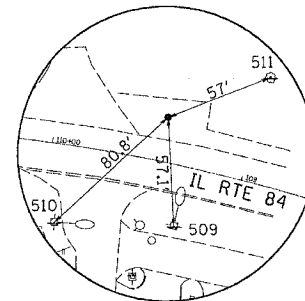
EXISTING HORIZONTAL & VERTICAL CONTROL

F.A.P. RTE.	SECTION	COUNTY	TOTAL SHEETS	SHEET NO.
595	(2R) M&T5	HENRY	90	16
STA.		TO STA.		
FED. ROAD DIST. NO.		ILLINOIS	FED. AID PROJECT	
CONTRACT NO. 64A10				

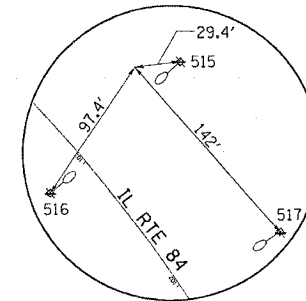
HORIZONTAL CONTROL POINTS							
POINT	NORTH	EAST	ELEVATION	CHAIN	STATION	OFFSET	DESCRIPTION
90331	1754561.1490	2242319.4010	574.7410	1184	120+05.3488	19.2966' RT	GPS CONTROL POINT, PIN
90332	1754557.0830	2243384.4830	591.4030	1184	109+43.8599	23.5384' RT	GPS CONTROL POINT, PK NAIL
90333	1754271.0300	2243953.9740	590.5440	1184	103+24.6325	63.5977' RT	GPS CONTROL POINT, PIN
90334	1754156.8780	2244015.3380	589.6880	1184	102+03.4139	42.0082' RT	GPS CONTROL POINT, PIN



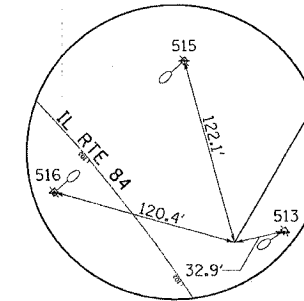
HORIZONTAL CONTROL POINT No. 90331



HORIZONTAL CONTROL POINT No. 90332



HORIZONTAL CONTROL POINT No. 90333



HORIZONTAL CONTROL POINT No. 90334

REFERENCE TIES				
POINT	CHAIN	STATION	OFFSET	DESCRIPTION
506	1184	119+58.2418	48.2650' LT	POWER POLE WITH LIGHT, SHINER
507	1184	121+67.1485	47.7386' LT	POWER POLE WITH LIGHT, SHINER
508	1184	120+48.8908	178.9247' RT	POWER POLE, SHINER
509	1184	109+29.1440	31.6659' LT	POWER POLE WITH LIGHT, SHINER
510	1184	109+93.0557	40.9189' LT	POWER POLE WITH LIGHT, SHINER
511	1184	108+98.5250	55.4742' RT	6" TREE DECIDUOUS, SHINER
512	1184	103+09.9197	87.7609' RT	POWER POLE WITH LIGHT, SHINER
513	1184	101+92.2513	72.7446' RT	POWER POLE WITH LIGHT, SHINER
514	1184	102+99.2438	30.3164' LT	POWER POLE WITH LIGHT, SHINER
515	1184	103+09.4850	87.9800' RT	POWER POLE WITH LIGHT, SHINER
516	1184	102+98.9235	30.4599' LT	POWER POLE WITH LIGHT, SHINER
517	1184	101+91.8932	72.3429' RT	POWER POLE WITH LIGHT, SHINER

FILE NAME : 051184
 LEVEL : 1184
 PLOT SCALE : 1/4" = 100'
 PLOT DATE : Wed Feb 07 16:23:08 2005
 OPERATOR : MUSER
 REF :
 REF :