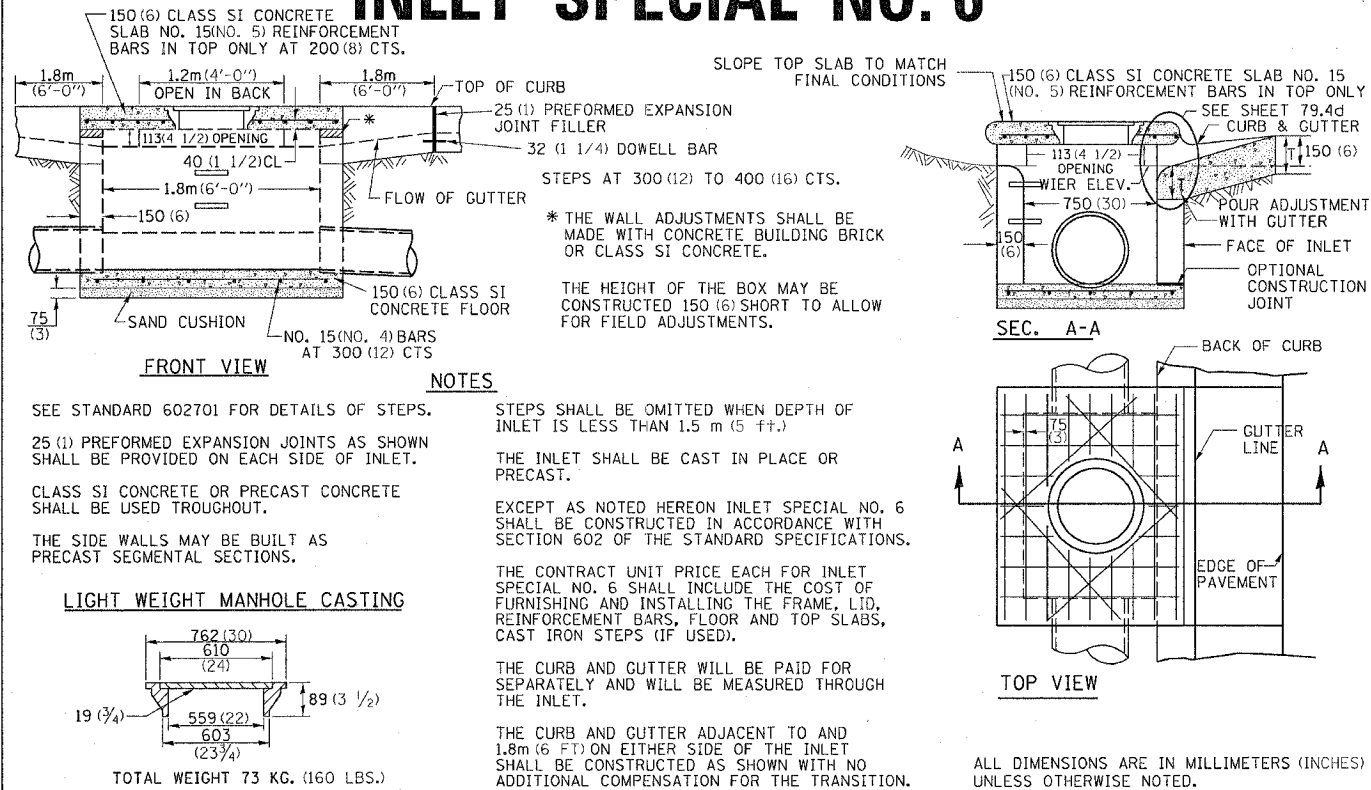


F.A.P. RTE.	SECTION	COUNTY	TOTAL SHEETS	SHEET NO.
595	(2R) M&TS	HENRY	90	50
STA.		TO STA.		
FED. ROAD DIST. NO.		ILLINOIS FED. AID PROJECT		

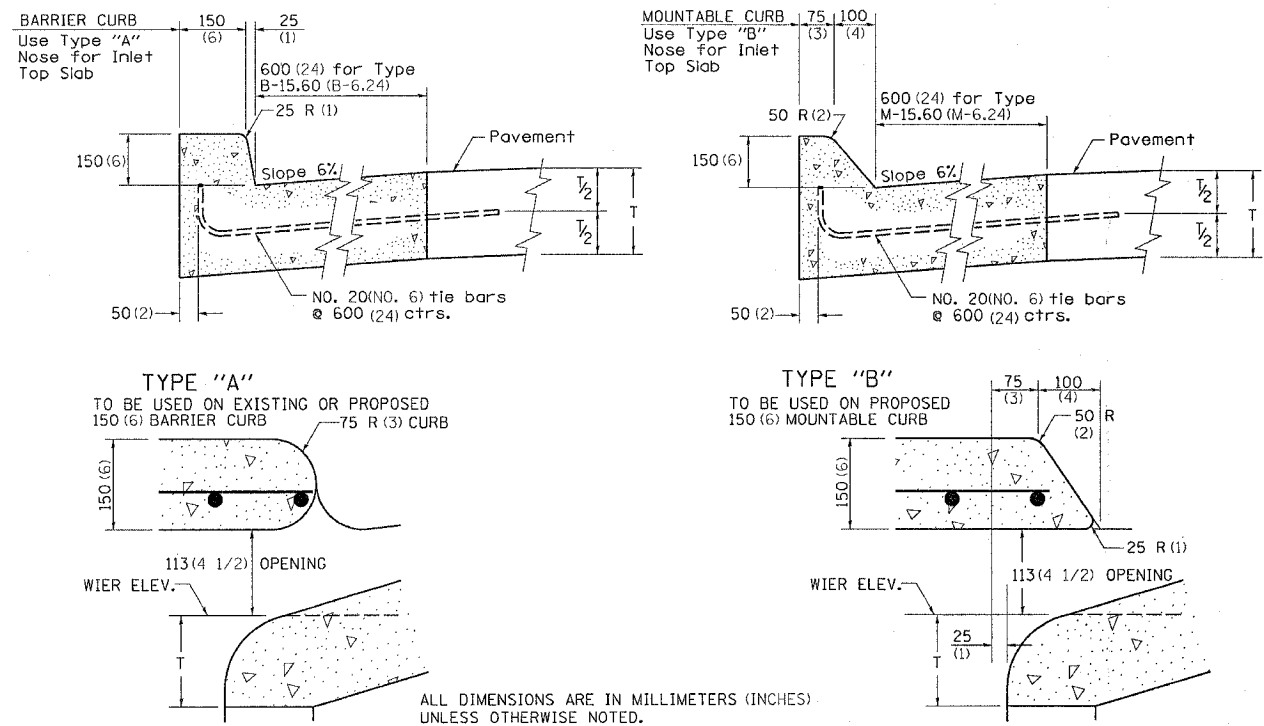
INLET SPECIAL NO. 6



INLET SPECIAL NO. 6 79.4c

REVISED 11-10-94

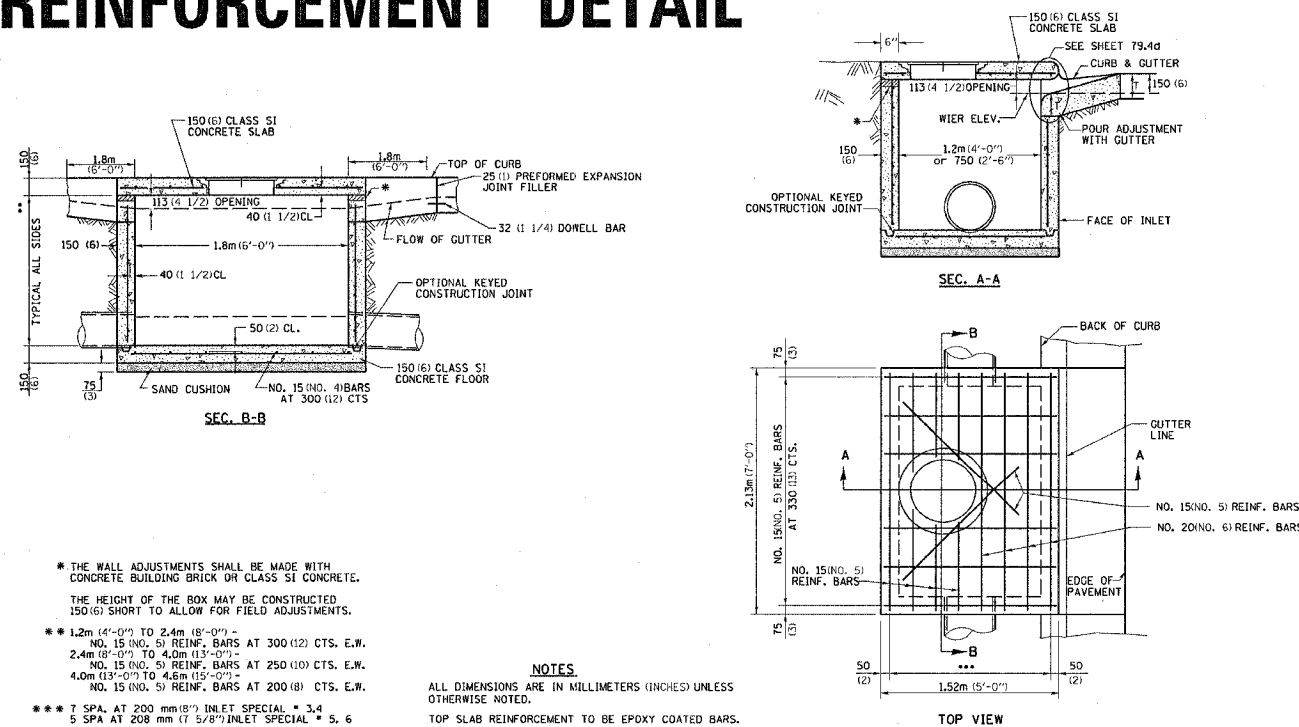
NOSE TYPE FOR INLET TOP SLAB



NOSE TYPE FOR INLET TOP SLAB 79.4d

REVISED 2-14-95

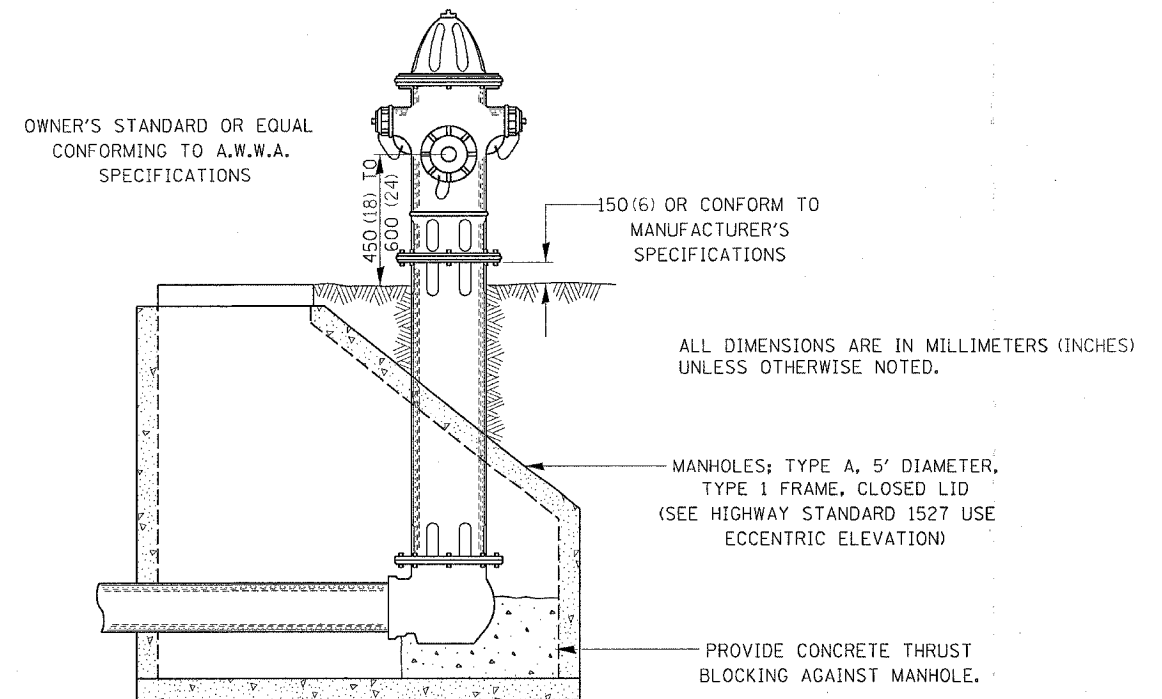
INLET SPECIAL NO. 3, 4, 5, 6 REINFORCEMENT DETAIL



INLET SPECIAL NO. 3, 4, 5, 6 REINFORCEMENT DETAIL 79.4e

REVISED 11-9-04

TYPICAL HYDRANT INSTALLATION



TYPICAL HYDRANT INSTALLATION 81.4

REVISED 1-8-96