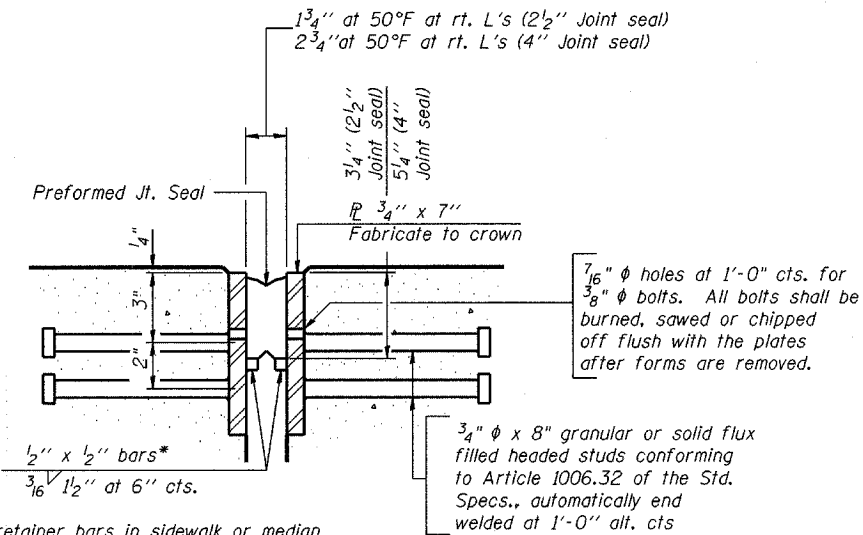


STATE OF ILLINOIS
DEPARTMENT OF TRANSPORTATION

ROUTE NO.	SECTION	COUNTY	DATE	SHEET	SHEET NO. 8
S.B.L.	*	Winnebago	36	25	9 SHEETS
F.A.L.					
FED. ROAD DIST. NO. 7	ILLINOIS	FED. AID PROJECT			

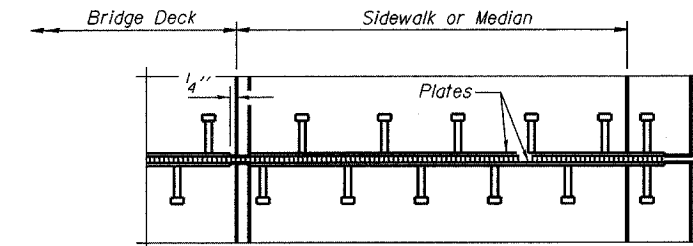
*(5VB, 5HB, 1-2HB)M CONTRACT #64A88



Bridge Joint System (Expansion)		
Design Movement	Required Preformed Joint Seal Size	Required Strip Seal Rated movement
1"	2 1/2"	1"
1 5/8"	4"	2"

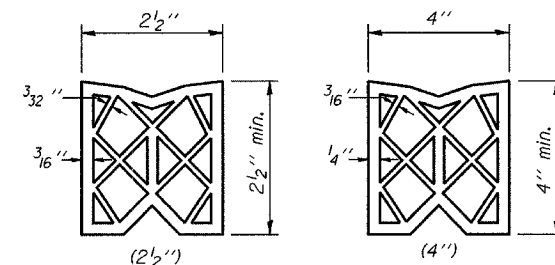
GENERAL NOTES

Furnish steel plates in segments of 20 feet maximum length. Maximum space between installed segments shall be 3/16". Seal space with silicone sealant suitable for structural steel.

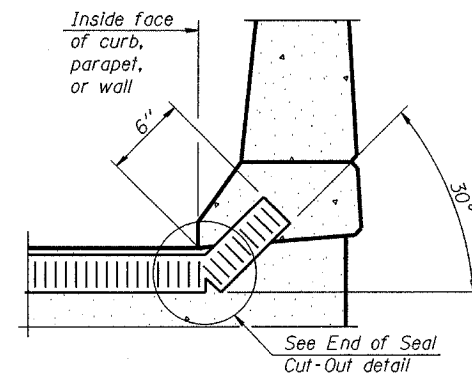


PLAN AT SIDEWALK OR MEDIAN

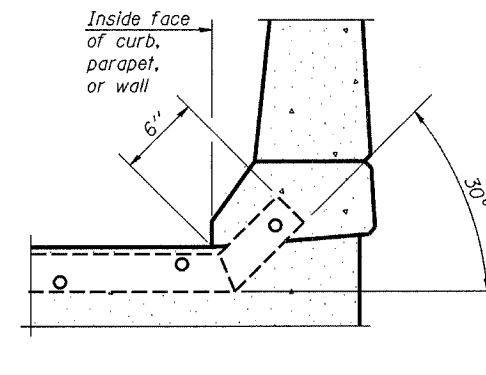
SECTION THRU EXPANSION JOINT
(2 1/2" and 4" joint seals)



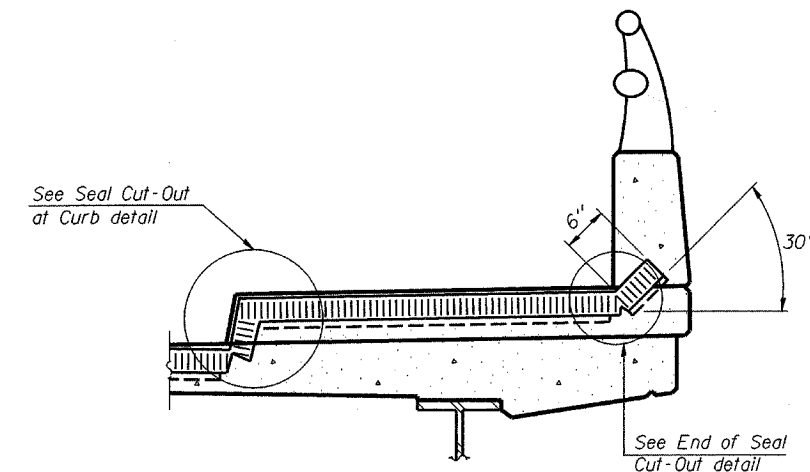
PREFORMED JOINT SEAL



AT CURB, PARAPET, OR WALL
(Showing seal)



AT CURB, PARAPET, OR WALL
(Showing plate)



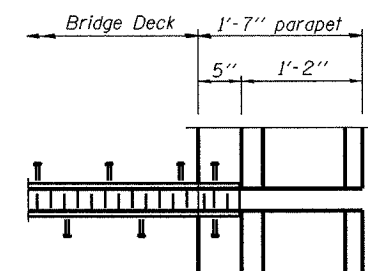
AT SIDEWALK OR MEDIAN*
(Showing plate and seal)

TYPICAL END TREATMENTS

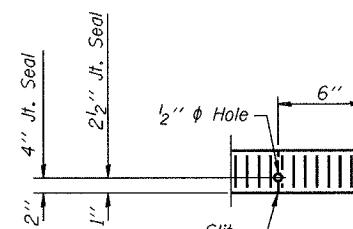
* Shorter plates with a single row of studs at 12" centers may be necessary on medians which are shallower than 9". See manufacturer's recommendation.

BILL OF MATERIAL

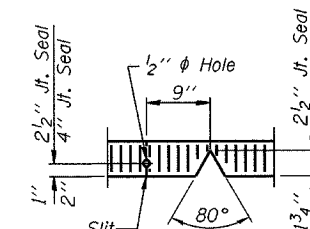
Item	Unit	Total
Bridge Joint System Expansion 1"	Foot	134



PLAN AT PARAPET



END OF SEAL CUT-OUT



SEAL CUT-OUT AT CURB

BRIDGE JOINT SYSTEM - EXPANSION
(PREFORMED JOINT SEAL)
F.A.P. Route 303 & F.A.P. Route 738
(IL 251) OVER Rockton Road
SECTION (5VB, 5HB, 1-2HB)M
WINNEBAGO COUNTY
SN 101-0031 & 101-0032

DESIGNED	SB, DP
CHECKED	SB
DRAWN	BH, BS
CHECKED	SB

EJ-BJS

10-22-04

(Sheet 1 of 2)