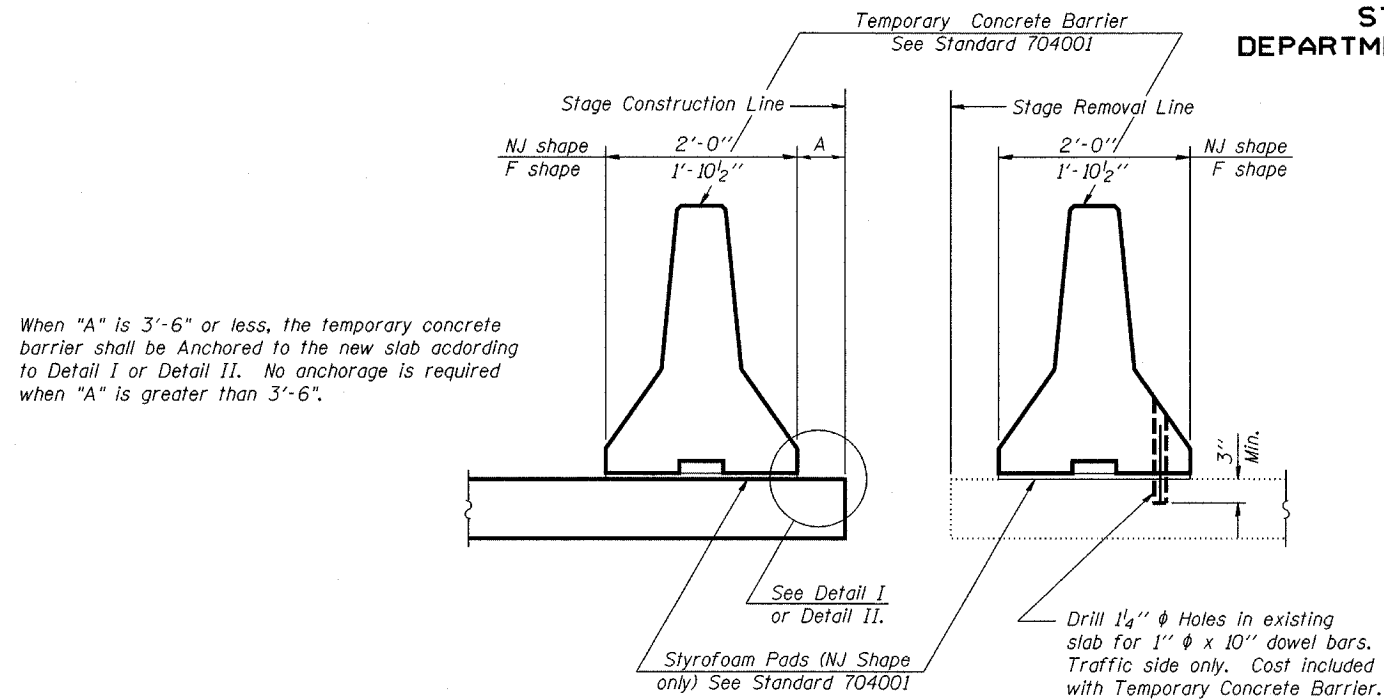


STATE OF ILLINOIS  
DEPARTMENT OF TRANSPORTATION

ROUTE NO.	SECTION	COUNTY	TOTAL SHEETS	SHEET NO.
S.D.L. F.A.P.	*	Winnebago	36	35
FED. ROAD DIST. NO. 7	BLINDS	FED. AID PROJECT		

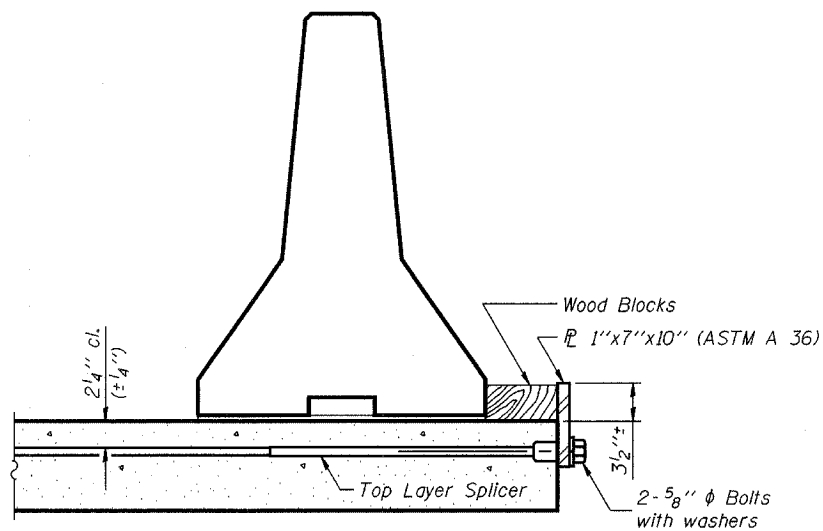
\* Section (5VB, 5HB, 1-2HB)M **LA88**



NEW SLAB

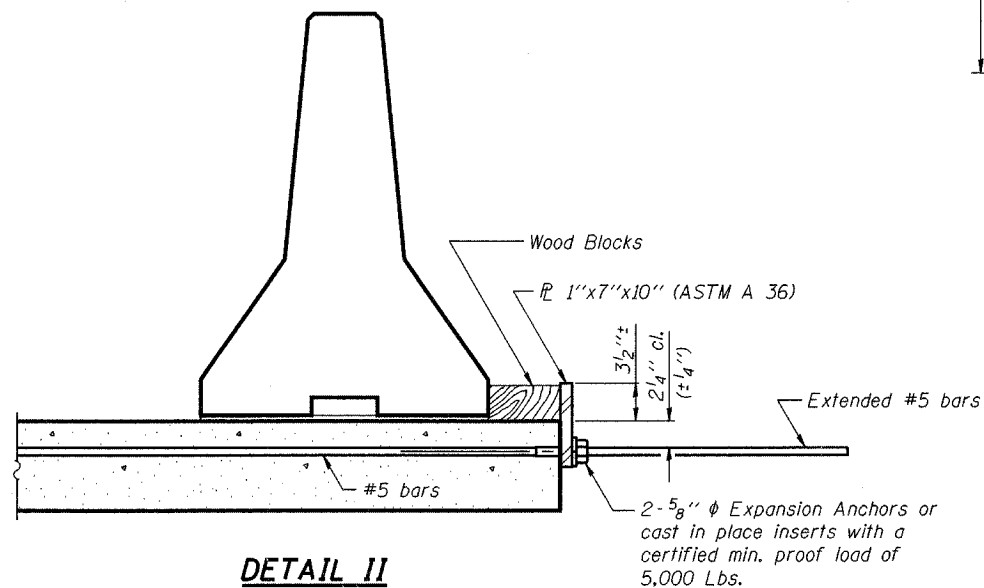
EXISTING SLAB

SECTION THRU SLAB



DETAIL I

The 1" x 7" x 10" Plate shall not be removed until Stage II Construction forms and reinforcement bars are in place.

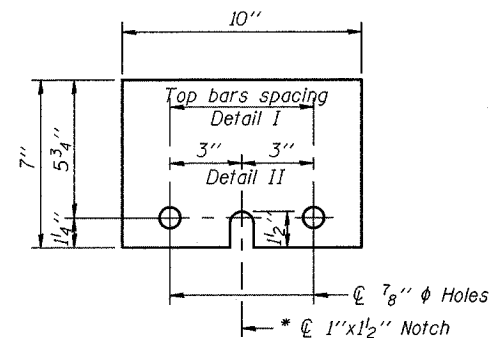


DETAIL II

The 1" x 7" x 10" Plate shall not be removed until Stage II Construction forms and all reinforcement bars are in place and the concrete is ready to be placed.

NOTES

- Detail I - With Bar Splicer or Couplers:  
Connect one (1) 1" x 7" x 10" steel  $\bar{L}$  to the top layer of couplers with 2-5/8"  $\phi$  bolts screwed to coupler at approximate  $\bar{C}$  of each barrier panel.
- Detail II - With Extended Reinforcement Bars:  
Connect one (1) 1" x 7" x 10" steel  $\bar{L}$  to the concrete slab with 2-5/8"  $\phi$  Expansion Anchors or cast in place inserts spaced between the top layer of reinforcement at approximate  $\bar{C}$  of each barrier panel.
- Cost of anchorage is included with Temporary Concrete Barrier.



1" x 7" x 10"

\* Required only with Detail II

DESIGNED
CHECKED
DRAWN
CHECKED

R-27

10-31-02

TEMPORARY CONCRETE BARRIER  
FOR STAGE CONSTRUCTION  
F.A.P. Route 303 & F.A.P. Route 738  
SECTION (5VB, 5HB, 1-2HB)M  
WINNEBAGO COUNTY