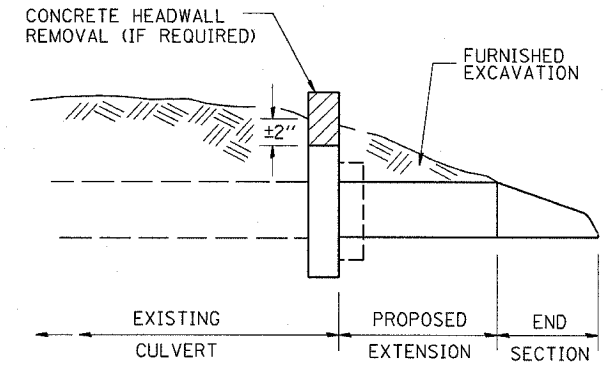
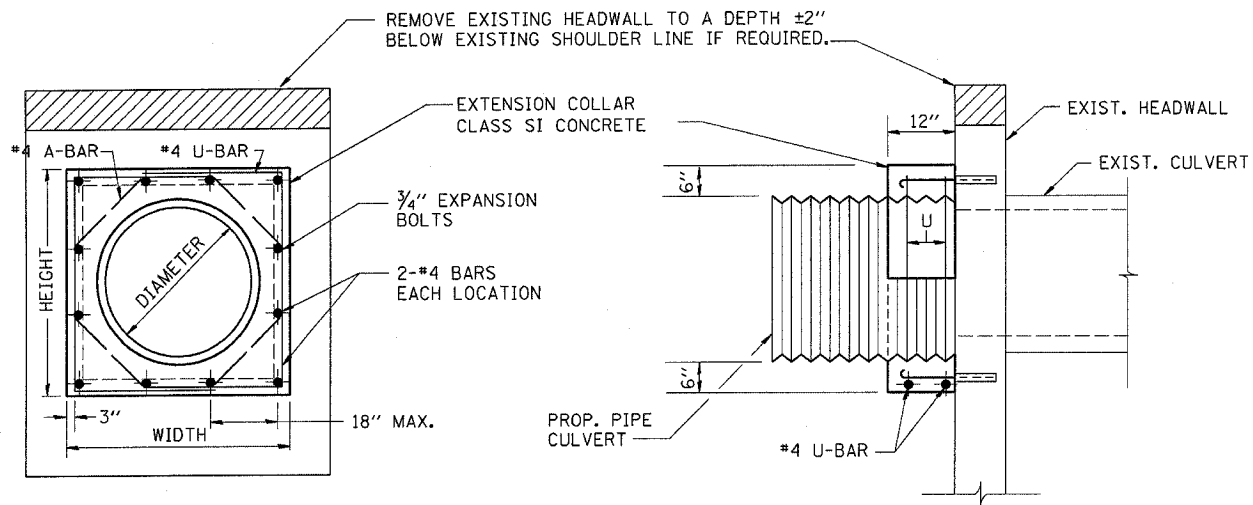


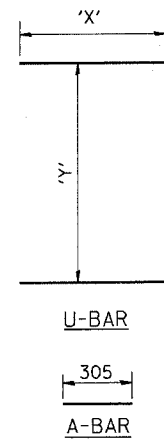
F.A.P. RTE.	SECTION	COUNTY	TOTAL SHEETS	SHEET NO.
607	(126,127)RS-4	KENDALL	8	7
STA.	TO STA.			
FED. ROAD DIST. NO.	ILLINOIS	FED. AID PROJECT		



SECTION A-A

PLAN AT CULVERT EXTENSIONS

EXPANSION BOLTS SHALL CONSIST OF SELF DRILLING EXPANSION SHIELDS AND 3/4" DIA. HOOKED BOLTS. HOOKED BOLTS SHALL EXTEND A MINIMUM OF 9" INTO NEW CONCRETE.  
MINIMUM CERTIFIED PROOF LOAD = 4,080 LBS.



LOCATION	EXISTING CULVERT SIZE	PIPE DIMENSION	PIPE AREA	EXTENSION COLLAR		A-BAR			U-BAR		CLASS SI CONC. COLLAR	REINFORCEMENT BARS	3/4" DIA. EXPANSION BOLTS
				WIDTH	HEIGHT	305	'X'	'Y'					
				IN.	IN.	IN.	IN.	IN.	CU. YD.	POUND			
APAKESHA ROAD SOUTHEAST QUAD	15	15	1.23	28	28	12	15	22	0.2	30	8		

COLLAR DETAIL

REVISIONS		ILLINOIS DEPARTMENT OF TRANSPORTATION
NAME	DATE	
SCALE: VERT. DATE	HORIZ.	DRAWN BY CHECKED BY