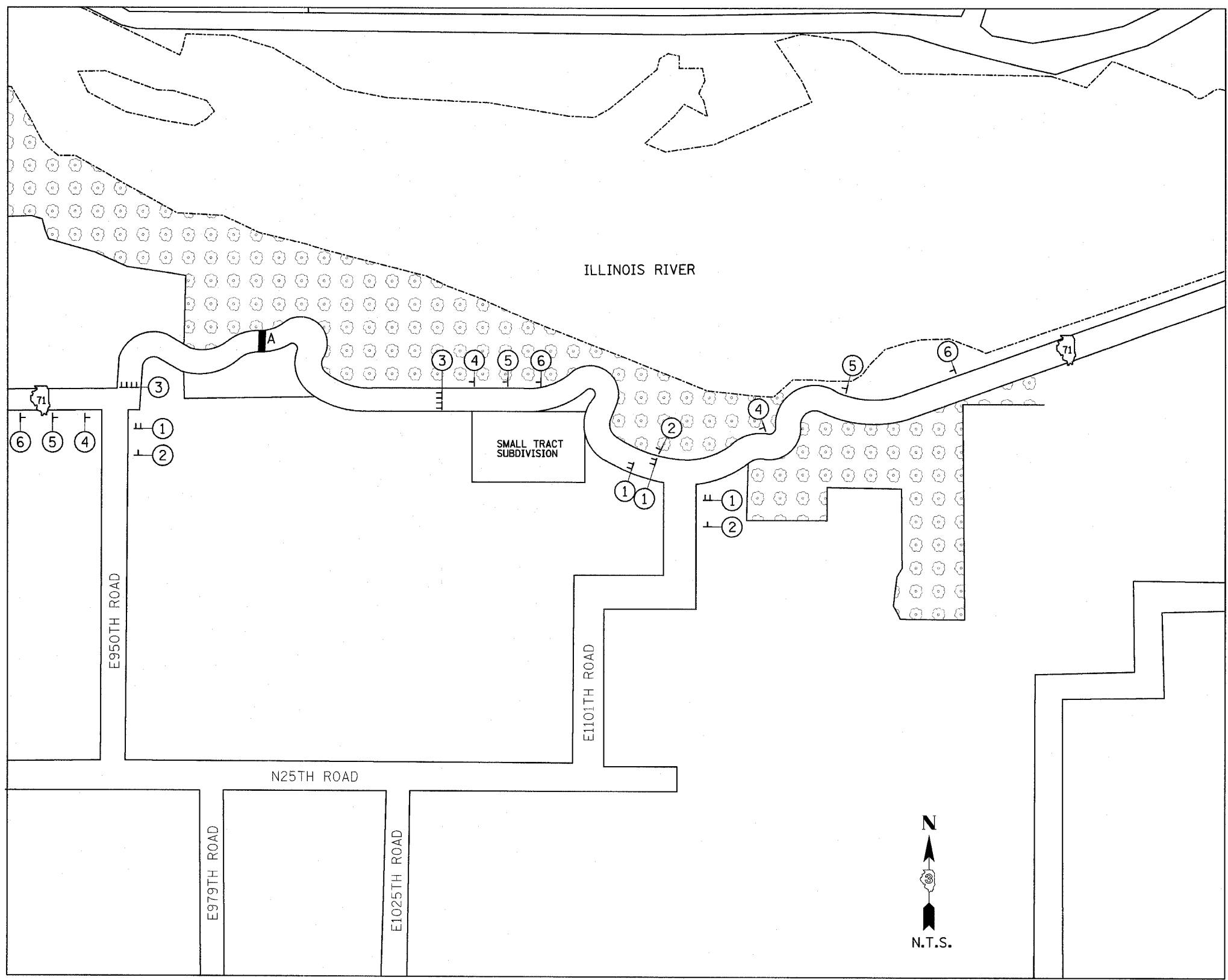


F.A.P. RTE.	SECTION	COUNTY	TOTAL SHEETS	SHEET NO.
627	(1-1)I-1	LA SALLE	60	12
STA.		TO STA.		
FED. ROAD DIST. NO.		ILLINOIS FED. AID PROJECT		
CONTRACT NO. 66550				

LEGEND

- XXXX TO BE COVERED
- FLASHING LIGHT
- ◇ 18"x8" ORANGE FLAG
- TT TYPE III BARRICADE
- DIRECTION ARROW CHANGE

- ① ROAD CLOSED TO THRU TRAFFIC
R11-4
60x30
- ② ROAD WORK AHEAD
W20-1
36x36
- ③ ROAD CLOSED
R11-2
48x30
- ④ ROAD CLOSED 500 FT
W20-3
36x36
- ⑤ ROAD CLOSED 1000 FT
W20-3
36x36
- ⑥ ROAD CLOSED 1500 FT
W20-3
36x36



STRUCTURE LOCATIONS
A.) S.N. 050-C803 @ STA. 402+22.00

GENERAL NOTES:

- 1.) ONLY SIGNS THAT ARE TO BE CHANGED OR ADDED ARE SHOWN ON THIS MAP.
- 2.) ALL SIGNS SHALL BE POST MOUNTED.
- 3.) ALL TYPE III BARRICADES SHALL BE EQUIPPED WITH 2 (TWO) TYPE A BI-DIRECTIONAL FLASHING LIGHTS.

SIGNAGE

IL ROUTE 71
OVER TRIBUTARY TO ILLINOIS RIVER
F.A.P. ROUTE 627 - SEC. (1-1)I-1
LA SALLE COUNTY

DESIGNED BY MSW	<p>2700 McGraw Drive Bloomington, Illinois 61704 309/885-6156 309/885-9771 fax</p>	FILE NO. 24-6772
DRAWN BY DJM		DATE 03/24/05
CHECKED BY MSW		SHEET NO. 12 OF 60