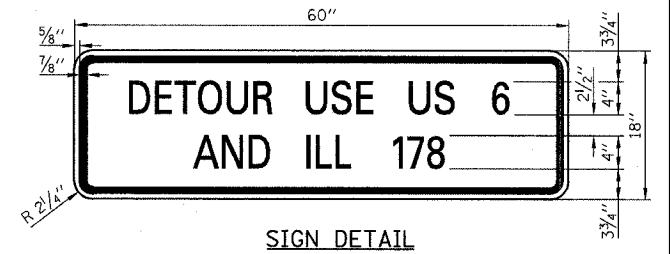
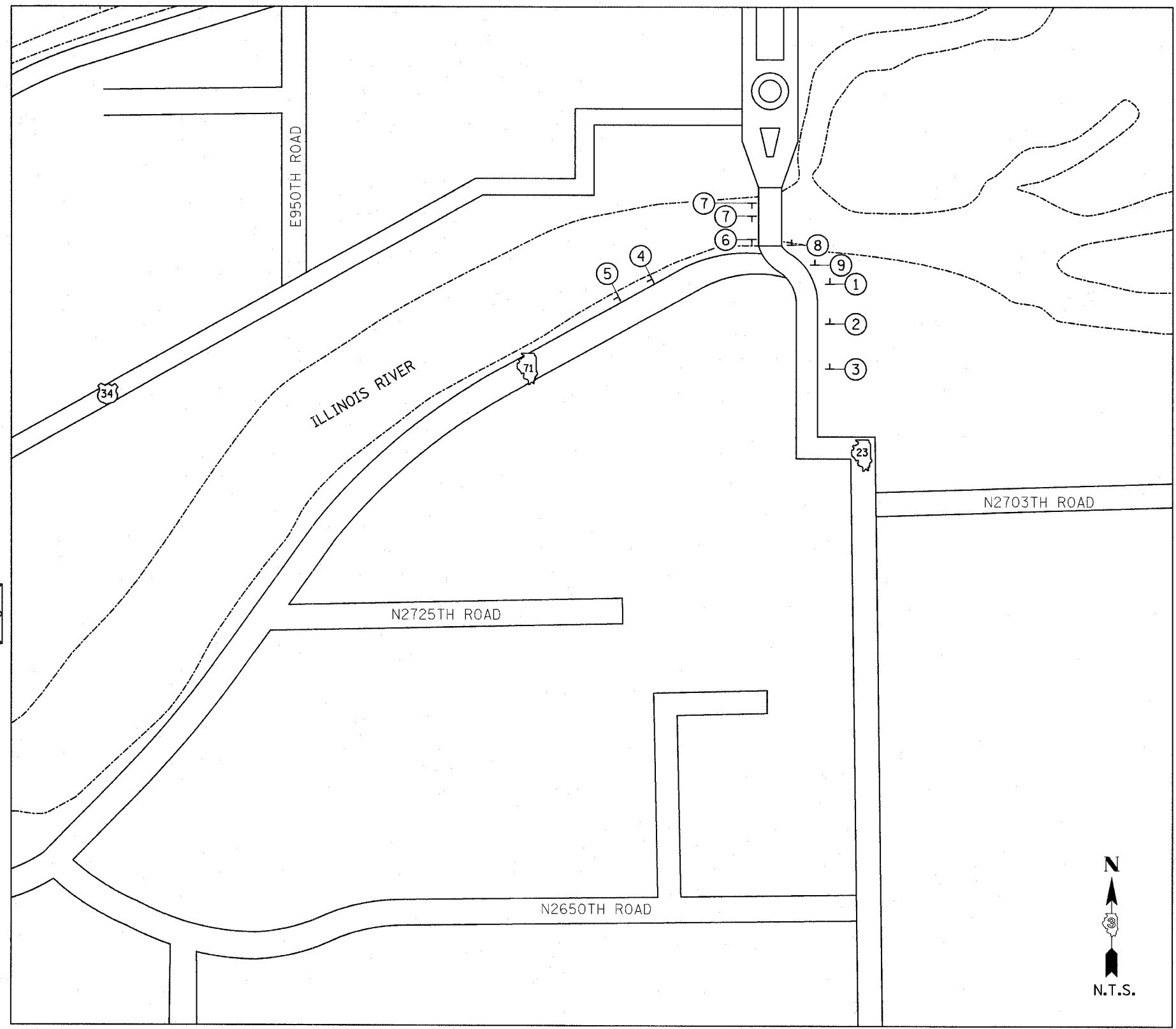


F.A.P. RTE.	SECTION	COUNTY	TOTAL SHEETS	SHEET NO.
627	(1-1)I-1	LA SALLE	60	15
STA.	TO STA.			
FED. ROAD DIST. NO.	ILLINOIS	FED. AID PROJECT		
CONTRACT NO. 66550				

**LEGEND**

- XXXX TO BE COVERED
- FLASHING LIGHT
- △ 18"x8" ORANGE FLAG
- TT TYPE III BARRICADE
- DIRECTION ARROW CHANGE

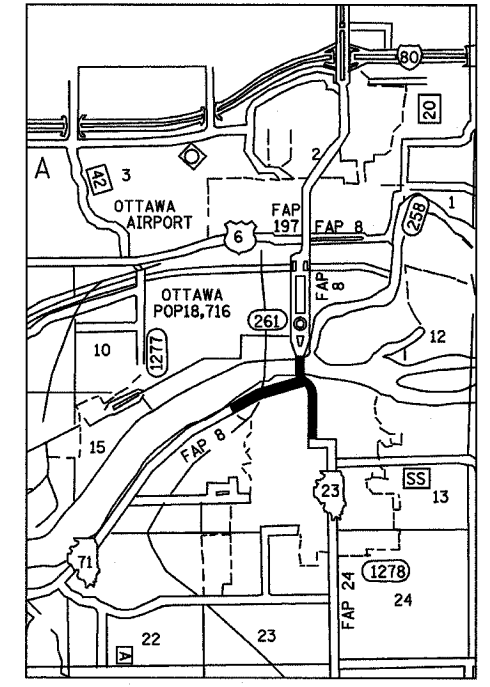
- ① 71 23
- ② OSWEGO  
OGLESBY  
STARVED ROCK
- ③ DETOUR  
AHEAD  
W20-2  
36x36
- ④ ROAD CLOSED  
6 MILES AHEAD  
LOCAL TRAFFIC ONLY  
71  
M1-1100  
24x24  
R11-3a  
60x30
- ⑤ SOUTH  
STREATOR  
23
- ⑥ WEST  
OGLESBY  
STARVED ROCK  
23  
M1-1100  
24x24  
R11-4  
60x30
- ⑦ DETOUR  
71  
M4-8  
24x12  
M6-3  
21x15
- ⑧ ROAD CLOSED  
TO  
THRU TRAFFIC  
71  
M1-1100  
24x24  
R11-4  
60x30
- ⑨ DETOUR  
USE US 6  
AND ILL 178  
71  
M1-1100  
24x24  
R11-4  
60x30  
SEE "SIGN  
DETAIL"



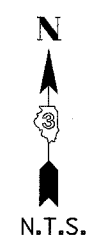
**SIGN DETAIL**  
SIGN PANEL - TYPE 1

**NOTES:**

- 1.) TOTAL AREA = 7.5 SQ. FT.
- 2.) 4" SERIES C LETTERS
- 3.) LEGEND = BLACK
- 4.) BACKGROUND = ORANGE



**LOCATION MAP**



**JUNCTION IL 23 & IL 71**

**GENERAL NOTES:**

- 1.) ONLY SIGNS THAT ARE TO BE CHANGED OR ADDED ARE SHOWN ON THIS MAP.
- 2.) ALL SIGNS TO BE POST MOUNTED.

**DETOUR MAP**

IL ROUTE 71  
OVER TRIBUTARY TO ILLINOIS RIVER  
F.A.P. ROUTE 627 - SEC. (1-1)I-1  
LA SALLE COUNTY

DESIGNED BY MSW	 2700 McDraw Drive Bloomington, Illinois 61704 302/883-6485, 302/883-1671 fax	FILE NO. 24-6772
DRAWN BY DJM		DATE 03/24/05
CHECKED BY MSW		SHEET NO. 15 OF 60