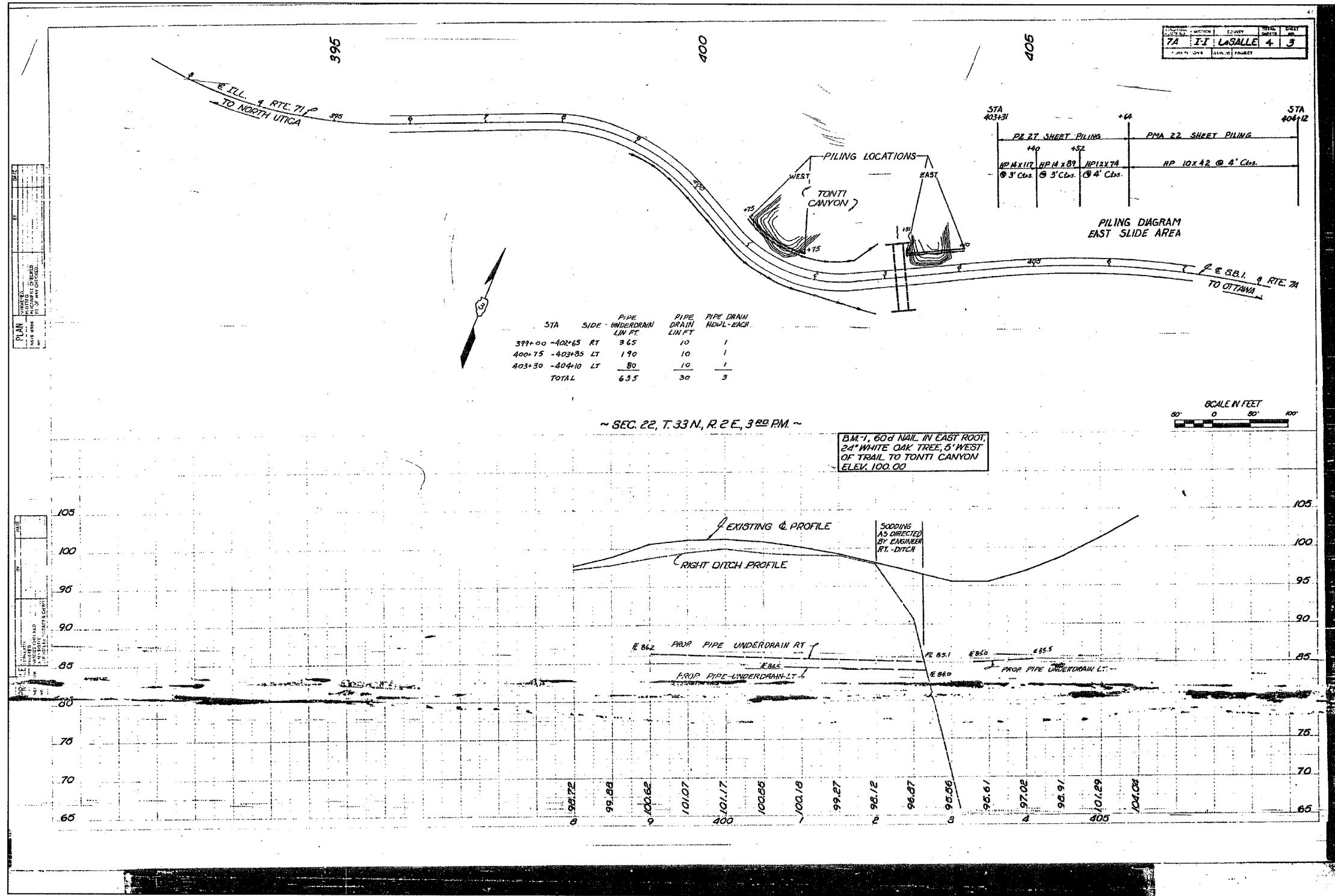


F.A.P. RTE.	SECTION	COUNTY	TOTAL SHEETS	SHEET NO.
627	(1-1)-1	LA SALLE	60	34
STA.	TO STA.			
FED. ROAD DIST. NO.	ILLINOIS FED. AID PROJECT			
CONTRACT NO. 66550	SHEET NO. C6			

OF 6 SHEETS



FOR INFORMATIONAL USE ONLY

DESIGNED BY J.M.L.
 DRAWN BY D.J.M.
 CHECKED BY M.S.W.

Farnsworth GROUP
 2700 MacBrew Drive
 Bloomington, Illinois 61704
 302/883-9438 302/883-9711 fax

FILE NO. 24-6772
 DATE 03-24-05
 SHEET NO. 34 of 60

EXISTING PLANS
 IL ROUTE 71
 OVER TRIBUTARY TO ILLINOIS RIVER
 F.A.P. ROUTE 627 - SEC. (1-1)-1
 LA SALLE COUNTY
 STATION 402+22.00
 STRUCTURE NO. 050-C803