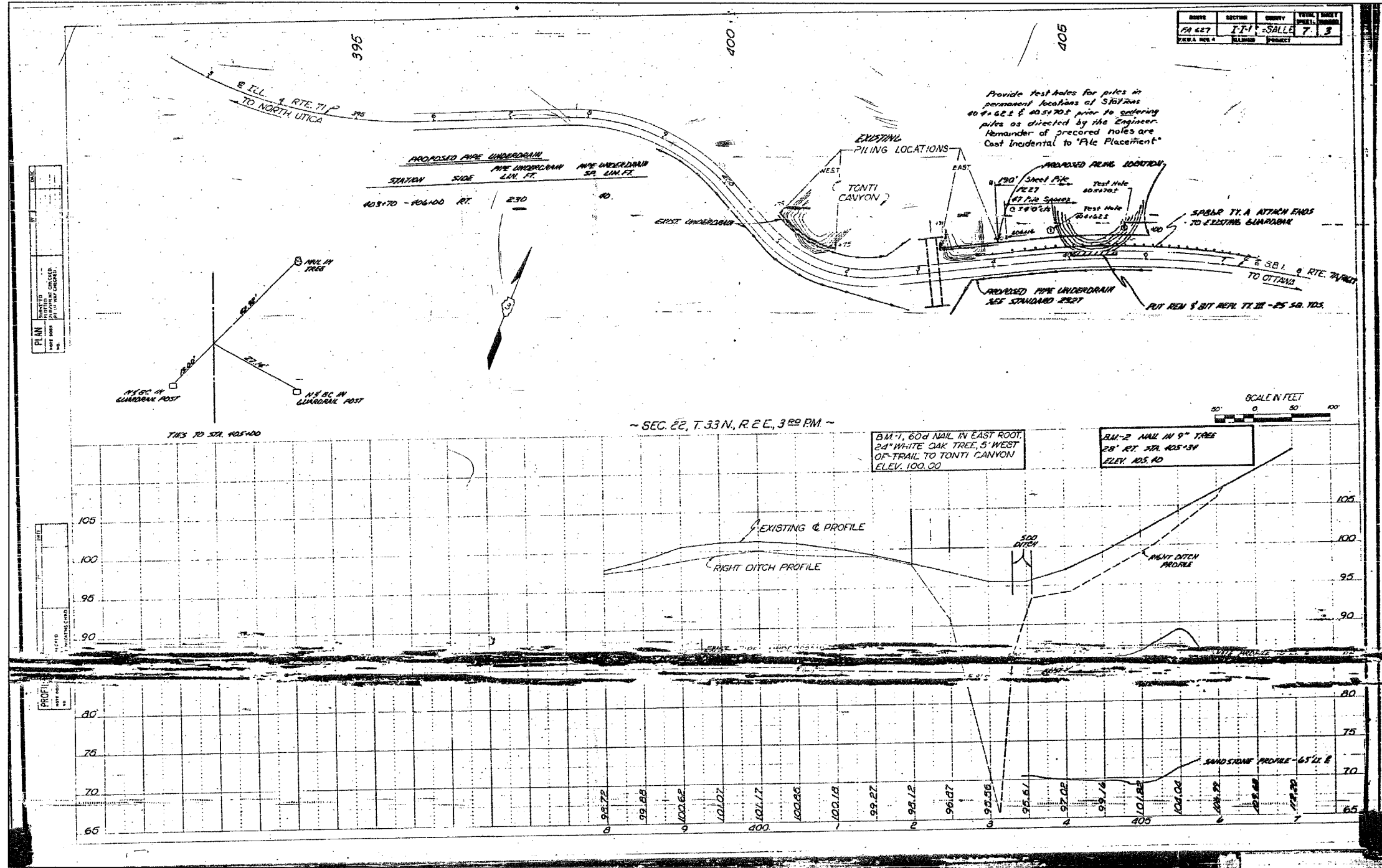


F.A.P. RTE.	SECTION	COUNTY	TOTAL SHEETS	SHEET NO.
627	(1-DI-1)	LA SALLE	60	49
STA.		TO STA.		
FED. ROAD DIST. NO.		ILLINOIS FED. AID PROJECT		
CONTRACT NO. 66550		SHEET NO. E9		

OF 9 SHEETS



FOR INFORMATIONAL USE ONLY

EXISTING PLANS
 IL ROUTE 71
 SOLDIER PILE RETAINING WALL
 F.A.P. ROUTE 627 - SEC. (1-DI-1)
 LA SALLE COUNTY
 STATION 403+94.31 TO STATION 405+31.53
 STRUCTURE NO. 050-W002

DESIGNED BY J.M.L.	FILE NO. 24-6772
DRAWN BY D.J.M.	DATE 03-24-05
CHECKED BY M.S.W.	SHEET NO. 49 of 60

Farnsworth GROUP
 2700 McGraw Drive
 Bloomington, Illinois 61704
 309/898-8495, 309/898-1271 fax