

INDEX OF SHEETS

- 1 COVER SHEET
- 2 GENERAL NOTES & SUMMARY OF QUANTITIES
- 3 TYPICAL SECTION
- 4 SCHEDULE OF QUANTITIES
- 5 LOCATION MAP
- 6 DETAIL

HIGHWAY STANDARDS

- 000001-04 STANDARD SYMBOLS, ABBREVIATIONS AND PATTERNS
- 701001-01 OFF-ROAD OPERATIONS 2L, 2W, MORE THAN 4.5 m (15') AWAY
- 701006-02 OFF-ROAD OPERATIONS 2L, 2W, 4.5 m (15') TO 600 mm (24") FROM PAVEMENT EDGE
- 701301-02 LANE CLOSURE, 2L, 2W, SHORT TIME OPERATIONS
- 701306-01 LANE CLOSURE, 2L, 2W, SLOW MOVING OPERATIONS DAY ONLY, FOR SPEEDS P 45 MPH
- 701311-02 LANE CLOSURE, 2L, 2W, MOVING OPERATIONS - DAY ONLY
- 702001-05 TRAFFIC CONTROL DEVICES
- 781001-02 TYPICAL APPLICATIONS RAISED REFLECTIVE PAVEMENT MARKERS

STATE OF ILLINOIS
DEPARTMENT OF TRANSPORTATION
DIVISION OF HIGHWAYS
PLANS FOR PROPOSED
FEDERAL AID HIGHWAY
F.A.S. ROUTE 1488 (OLD US 66)
SECTION (16,17,18)RS-2
MCLEAN COUNTY

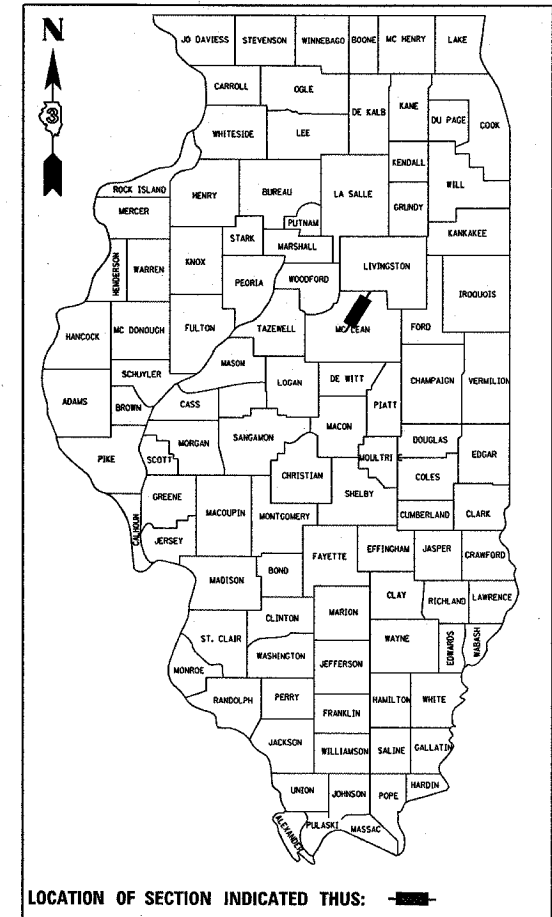
C - 93 - 050 - 05

PROJECT DESCRIPTION

SOUTH OF MORGAN ST IN MCLEAN TO SOUTH OF CH 34 NEAR SHIRLEY
MICROSURFACING, ONE PASS

F.A.S. RTE.	SECTION	COUNTY	TOTAL SHEETS	SHEET NO.
1488	*	MCLEAN	6	1

* (16,17,18)RS-2
 D-93-034-05

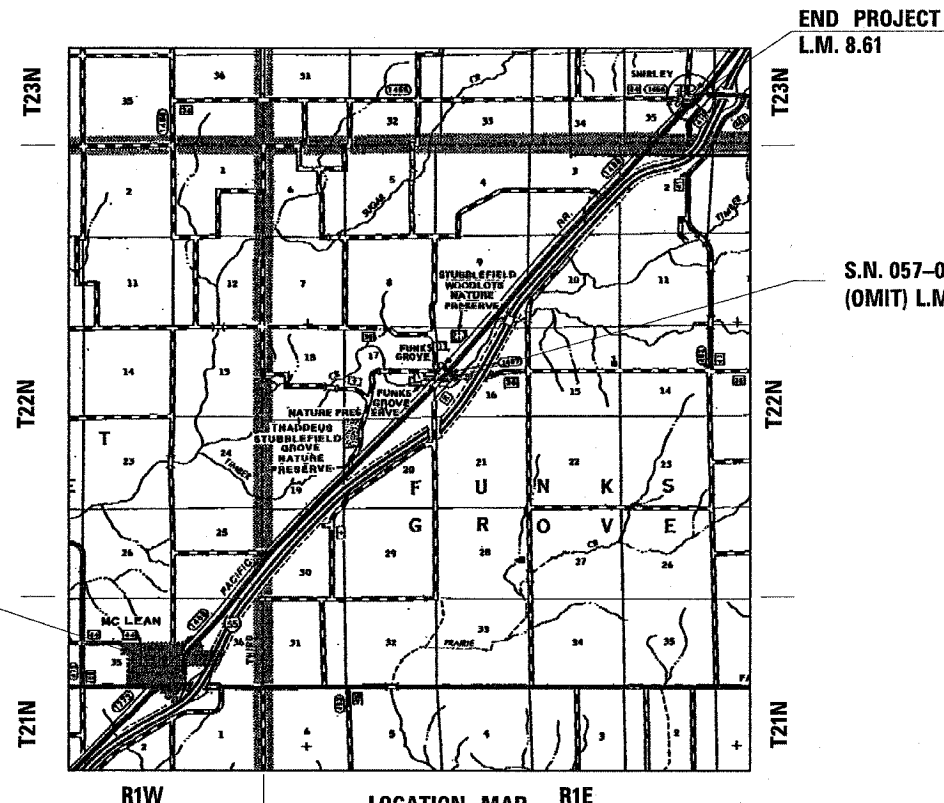


FUNCTION CLASSIFICATION
RURAL, MAJOR COLLECTOR
 1998 ADT = 850

STATE OF ILLINOIS
DEPARTMENT OF TRANSPORTATION
DIVISION OF HIGHWAYS

SUBMITTED MARCH 17 2005
Gregory Mount
 DEPUTY DIRECTOR OF HIGHWAYS, REGION ENGINEER
May 13 2005
Nike Nease
 ENGINEER OF DESIGN AND ENVIRONMENT
May 13 2005
Victor Madari
 DIRECTOR OF HIGHWAYS, CHIEF ENGINEER

PRINTED BY THE AUTHORITY
OF THE STATE OF ILLINOIS



S.N. 057-0003
 (OMIT) L.M. 4.49 TO L.M. 4.51

BEGIN PROJECT
L.M. 0.00

END PROJECT
L.M. 8.61

LOCATION MAP
NOT TO SCALE

GROSS LENGTH = 45,460.80 FT. = 8.61 MI.
 NET LENGTH = 45,355.20 FT. = 8.59 MI.

MICROFILMED _____
 REEL NUMBER _____
 AWARDED _____
 RESIDENT ENGINEER _____
 AS BUILT CHANGES WERE MADE
 ON THE FOLLOWING SHEETS _____

JULIE 1-800-892-0123

DISTRICT 3 NO. (815) 434-6131

PROJECT ENGINEER: DAN DRAPER
UNIT CHIEF: PAT BRABOY
TOWNSHIP: MOUNT HOPE, FUNKS GROVE, DALE

CONTRACT NO. 66558

F. A. S. NO.	SECTION	COUNTY	TOTAL SHEETS	SHEET NO.
1488	116,17,18RS-2	MCLEAN	6	2
STA.		TO STA.		
FED. ROAD DIST. NO.		ILLINOIS	FED. AID PROJECT	

GENERAL NOTES

THE THICKNESS OF BITUMINOUS MIXTURES SHOWN ON THE PLANS IS THE NOMINAL THICKNESS. DEVIATIONS FROM THE NOMINAL THICKNESS WILL BE PERMITTED WHEN SUCH DEVIATIONS OCCUR DUE TO IRREGULARITIES IN THE EXISTING SURFACE OR BASE ON WHICH THE BITUMINOUS MIXTURE IS PLACED.

THE ENGINEER WILL BE THE SOLE JUDGE CONCERNING CURING TIME FOR THE VARIOUS BITUMINOUS LIFTS.

WHERE SECTION OR SUBSECTION MONUMENTS ARE ENCOUNTERED, THE ENGINEER SHALL BE NOTIFIED BEFORE SUCH MONUMENTS ARE REMOVED. THE CONTRACTOR SHALL PROTECT AND CAREFULLY PRESERVE ALL MONUMENTS UNTIL AN AUTHORIZED SURVEYOR OR AGENT HAS WITNESSED OR OTHERWISE REFERENCED THEIR LOCATION. THE CONTRACTOR SHALL BE RESPONSIBLE FOR HAVING AN AUTHORIZED SURVEYOR REESTABLISH ANY SECTION OR SUBSECTION MONUMENTS DESTROYED BY HIS OPERATIONS.

SHORT TERM PAVEMENT MARKING SHALL BE USED TO OUTLINE THE CENTERLINE OF ROADWAY ONLY.

ANY REFERENCE TO A STANDARD IN THESE PLANS SHALL BE INTERPRETED TO MEAN THE EDITION AS INDICATED BY THE SUBNUMBER LISTED ON THE INDEX OF SHEETS OR THE COPY OF THE STANDARD INCLUDED IN THESE PLANS.

THE FOLLOWING RATES OF APPLICATION HAVE BEEN USED IN CALCULATING PLAN QUANTITIES:

MICROSURFACING	20	LBS / SQ YD
SHORT TERM PAVEMENT MARKING	10	FT / 100 FT OF APPLICATION

MEMBERS OF JULIE KNOWN TO BE WITHIN THE LIMITS OF THE IMPROVEMENT ARE:

- MEDIACOM
- AMEREN IP
- VERIZON
- CENTRAL ILLINOIS LIGHT CO.
- NICOR

THE CONTRACTOR SHALL DEVISE AND SUBMIT A JOINT PLAN THAT MEETS THE APPROVAL OF THE ENGINEER

COMMITMENTS

THERE ARE NO COMMITMENTS FOR THIS PROJECT.

SUMMARY OF QUANTITIES

CODE NO.	ITEM	UNIT	TOTAL QTY	CONSTR. TYPE CODE
				F000 ROADWAY 100% STATE
44800100	MICROSURFACING, 1-PASS	SQ YD	120948	120948
67100100	MOBILIZATION	L SUM	1	1
70100460	TRAFFIC CONTROL AND PROTECTION, STANDARD 701306	L SUM	1	1
70300100	SHORT TERM PAVEMENT MARKING	FOOT	4540	4540
* 78001110	PAINT PAVEMENT MARKING LINE, 4"	FOOT	98737	98737
* 78001130	PAINT PAVEMENT MARKING LINE, 6"	FOOT	11353	11353
70301000	WORK ZONE PAVEMENT MARKING REMOVAL	SQ FT	1513	1513
* 78100100	RAISED REFLECTIVE PAVEMENT MARKER	EACH	562	562
78300200	RAISED REFLECTIVE PAVEMENT MARKER REMOVAL	EACH	562	562

* INDICATES SPECIALTY ITEM

STATE OF ILLINOIS
DEPARTMENT OF TRANSPORTATION
DISTRICT THREE

PREPARED BY: Thomas R. Bonch
DISTRICT STUDIES & PLANS ENGINEER

DATE: 03/14/2005

EXAMINED BY: Hubert E. [Signature]
DISTRICT CONSTRUCTION ENGINEER

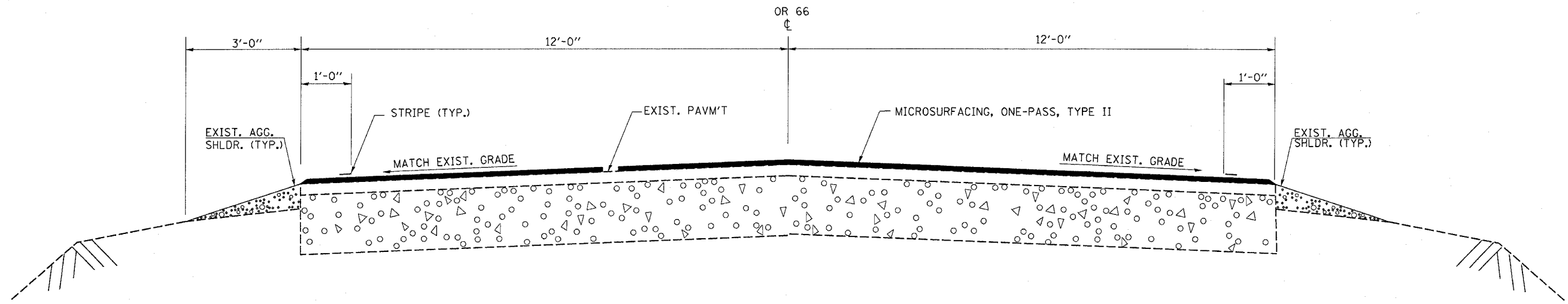
Harold L. [Signature]
DISTRICT MATERIALS ENGINEER

James A. [Signature]
DISTRICT OPERATIONS ENGINEER

ILLINOIS DEPARTMENT OF TRANSPORTATION

GENERAL NOTES
SUMMARY OF QUANTITIES

F.A.S. RTE.	SECTION	COUNTY	TOTAL SHEETS	SHEET NO.
1488	(16,17,18)RS	MCLEAN	6	3
STA.		TO STA.		
FED. ROAD DIST. NO.		ILLINOIS FED. AID PROJECT		



TYPICAL SECTION

L.M. 0.00 TO L.M. 4.49
L.M. 4.51 TO 8.61

3/1/2005 c:\proj\ecrs\ecr03\03\derof1.s.dgn

REVISIONS	
NAME	DATE

ILLINOIS DEPARTMENT OF TRANSPORTATION

TYPICAL SECTION

SCALE: VERT. _____
 HORIZ. _____

DATE _____

DRAWN BY _____
CHECKED BY _____

F.A.S. RTE.	SECTION	COUNTY	TOTAL SHEETS	SHEET NO.
1488	(16,17,18)RS	MCLEAN	6	4
STA.		TO STA.		
FED. ROAD DIST. NO. _		ILLINOIS	FED. AID PROJECT	

PAVEMENT MARKING SCHEDULE							
LOCATION	PAINT PVMT MRK - LINE 4" (WHITE)	PAINT PVMT MRK - LINE 4" (YELLOW)	PAINT PVMT MRK - LINE 6" (YELLOW)	RAISED REFLECTIVE PVMT MARKER	RAISED REFLECTIVE PVMT MARKER REMOVAL	SHORT TERM PVMT MRK	WORK ZONE PVMT MRK REMOVAL
LOG MILE	FT	FT	FT	EACH	EACH	FT	SQ FT
0.00 TO 4.49	47,415	3,960	5,927	296	296	2,370	790
4.51 TO 8.61	43,402	3,960	5,426	272	272	2,170	723
TOTAL	90,817	7,920	11,353	568	568	4,540	1,513

NOTE: THE ENGINEER SHALL VERIFY THE LOCATION OF THE NO PASSING ZONES PRIOR TO CONSTRUCTION

MICROSURFACING, 1-PASS	
LOCATION	MICROSURFACING
LOG MILE	SQ YD
0.00 TO 4.49	63,220
4.51 TO 8.61	57,728
TOTAL	120,948

GAP SN 057-0003

3/11/2005 c:\projects\6603405\draw11.s.dgn

REVISIONS	
NAME	DATE

ILLINOIS DEPARTMENT OF TRANSPORTATION

SCHEDULE OF QUANTITIES

SCALE: VERT. _____
 HORIZ. _____

DATE _____ DRAWN BY _____
 CHECKED BY _____

F.A.S. RTE.	SECTION	COUNTY	TOTAL SHEETS	SHEET NO.
1488	(16,17,18)RS	MCLEAN	6	5
STA.	TO STA.			
FED. ROAD DIST. NO.	ILLINOIS	FED. AID PROJECT		

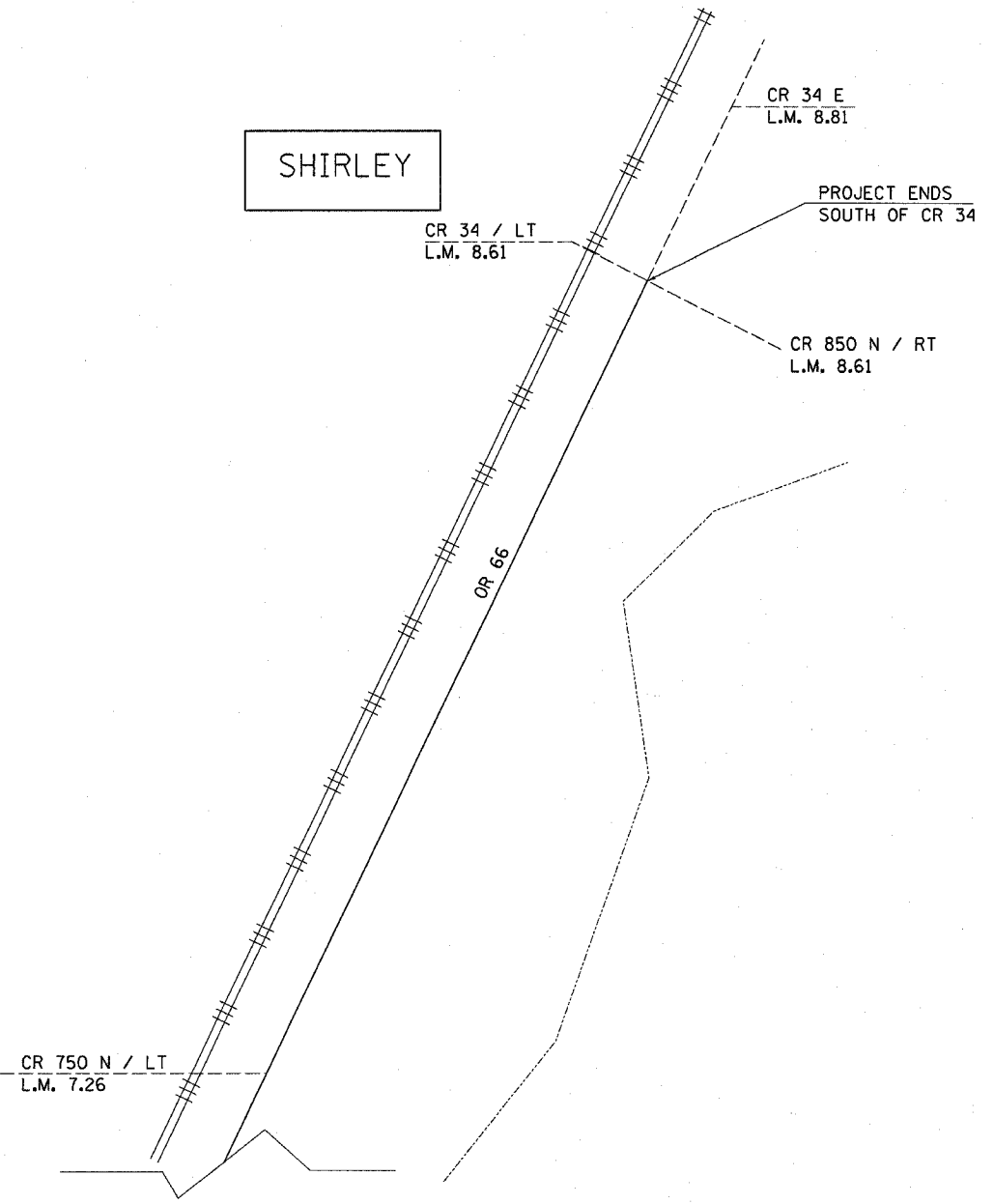
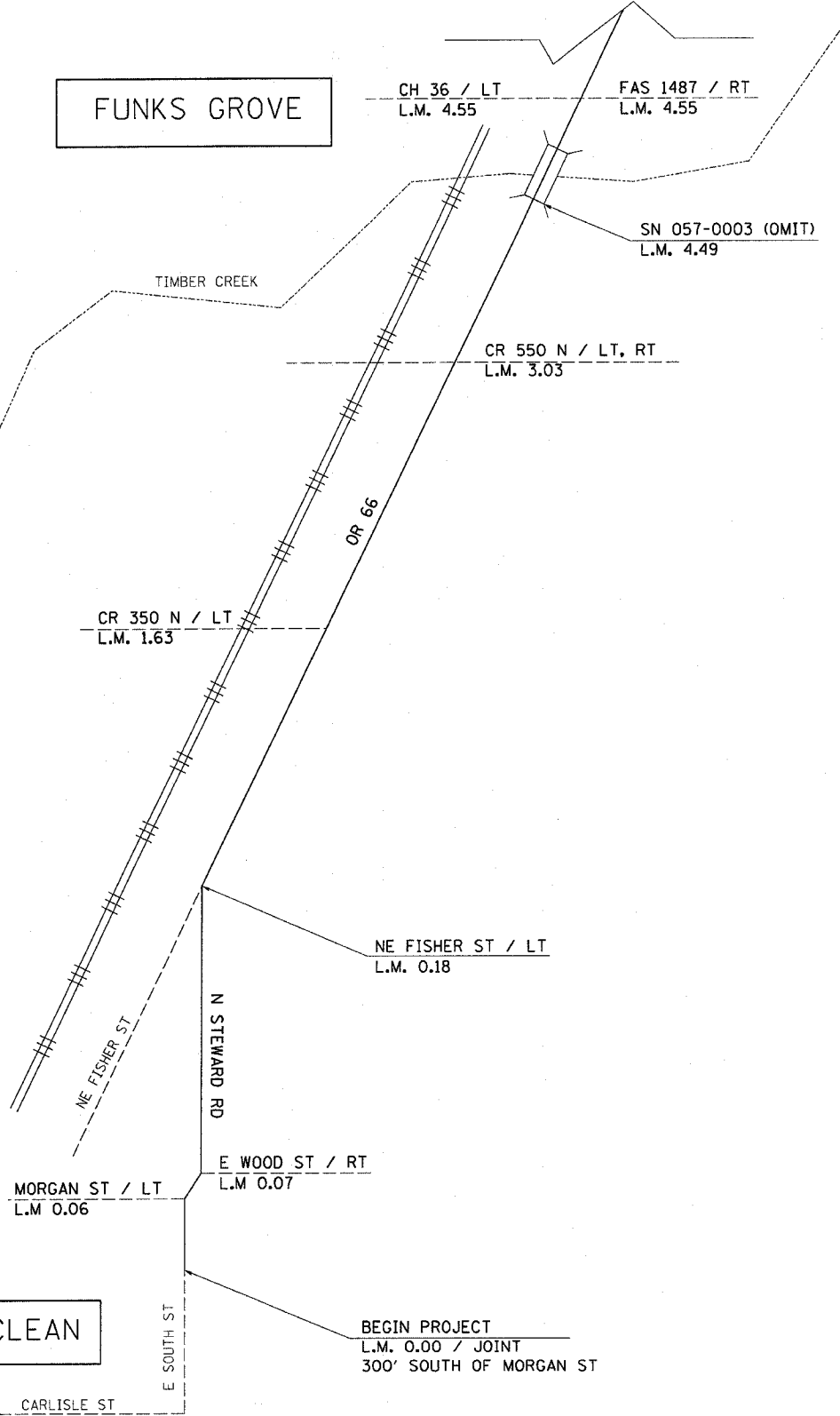
- NOTE:**
- OMIT STRUCTURE
 - MAP NOT TO SCALE



FUNKS GROVE

SHIRLEY

MCLEAN



BEGIN PROJECT
L.M. 0.00 / JOINT
300' SOUTH OF MORGAN ST

PROJECT ENDS
SOUTH OF CR 34

REVISIONS	
NAME	DATE

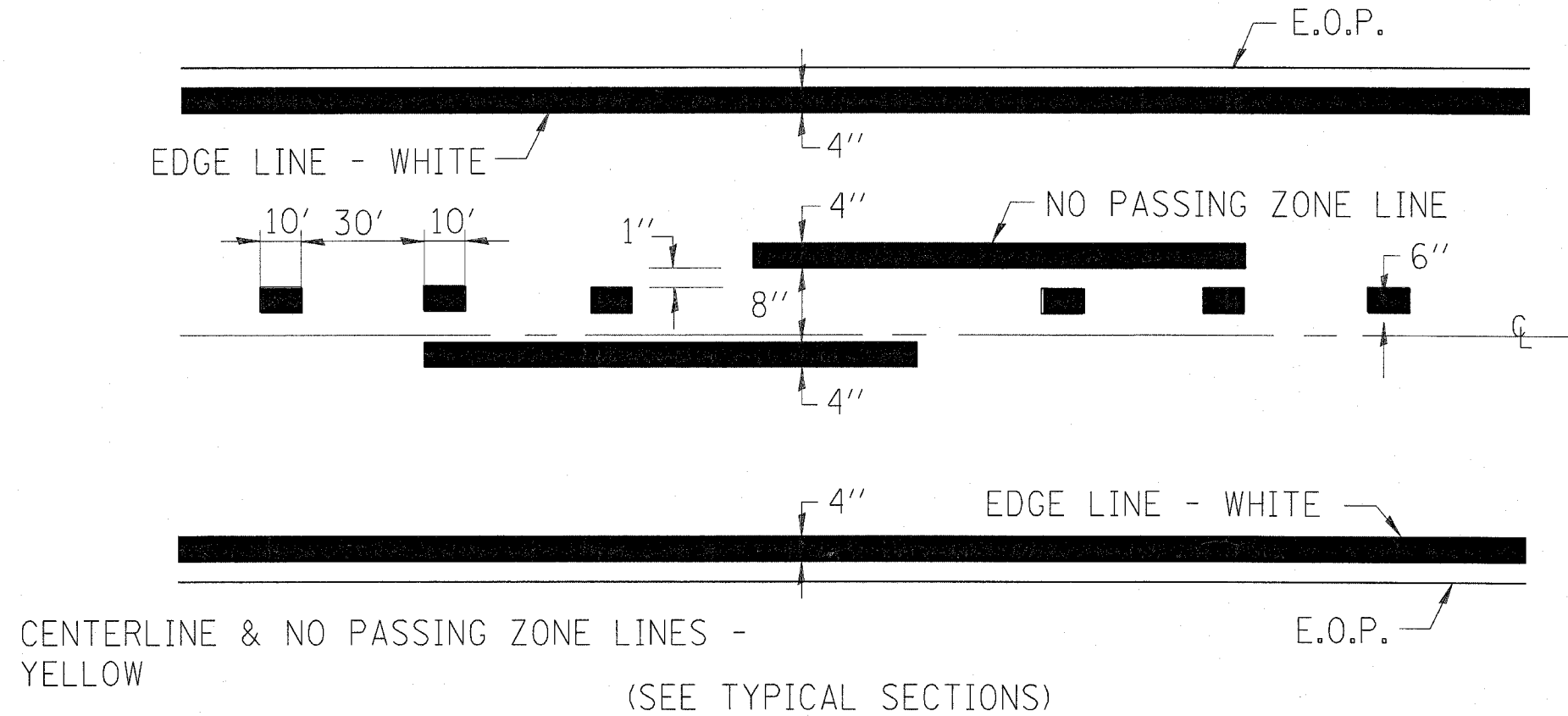
ILLINOIS DEPARTMENT OF TRANSPORTATION

LOCATION MAP

SCALE: VERT. / HORIZ. / DATE

DRAWN BY / CHECKED BY

F.A.S. RTE.	SECTION	COUNTY	TOTAL SHEETS	SHEET NO.
1488	(16,17,18)RS	MCLEAN	6	6
STA.		TO STA.		
FED. ROAD DIST. NO. - ILLINOIS		FED. AID PROJECT		



PAVEMENT MARKING

(SEE TYPICAL SECTIONS)

REVISIONS	
NAME	DATE

ILLINOIS DEPARTMENT OF TRANSPORTATION

DETAILS

SCALE: VERT. / HORIZ. / DATE

DRAWN BY / CHECKED BY

3/11/2005 c:\proj\ecr\ave09405\detail1.dgn