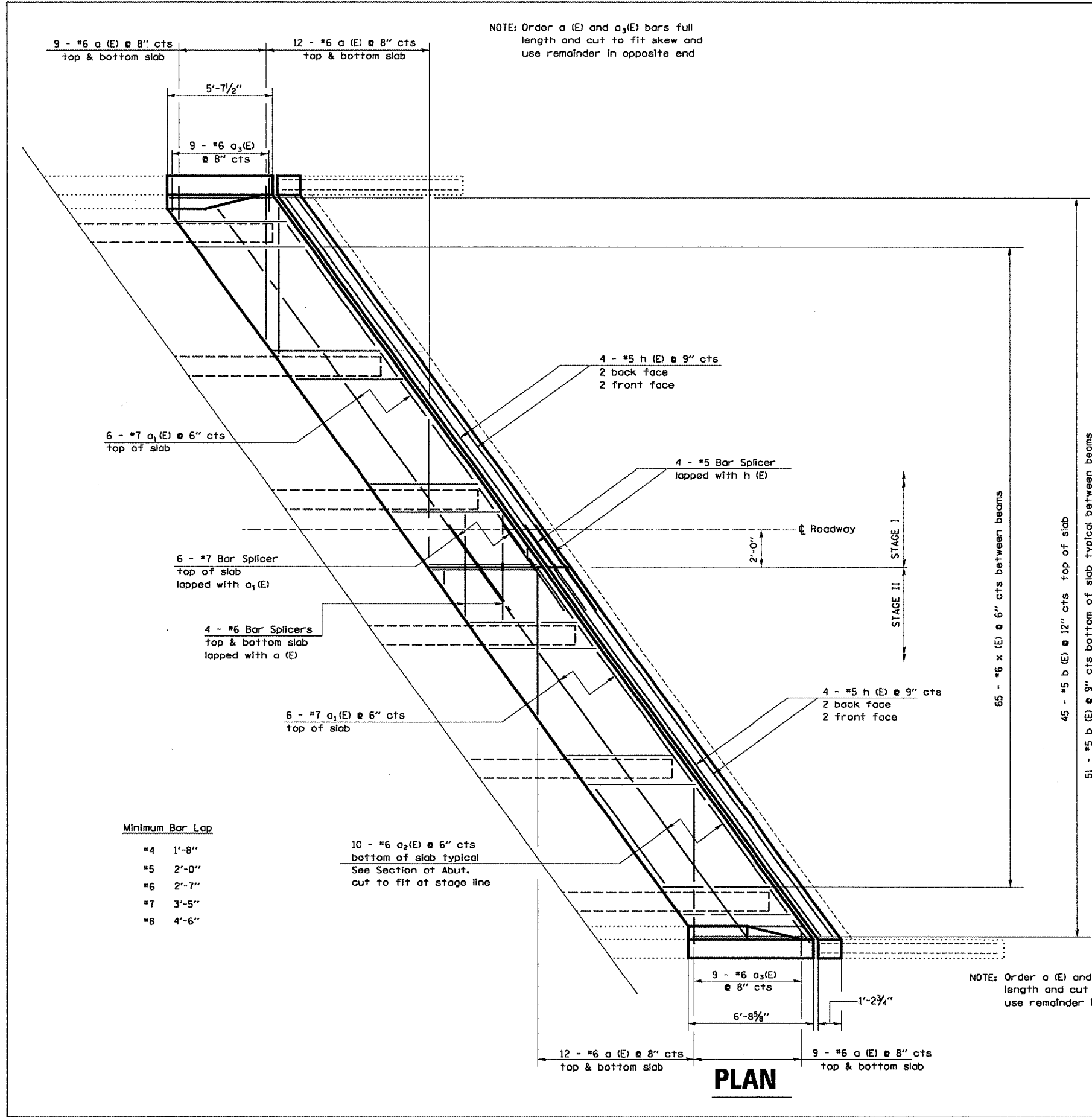


F.A.I. RTE.	SECTION	COUNTY	TOTAL SHEETS	SHEET NO.
412	(50-GVB)I-2	LASALLE	25	9
FED. ROAD DIST. NO.		ILLINOIS	STATE AID PROJECT	

NOTE: Order a (E) and a₃(E) bars full length and cut to fit skew and use remainder in opposite end

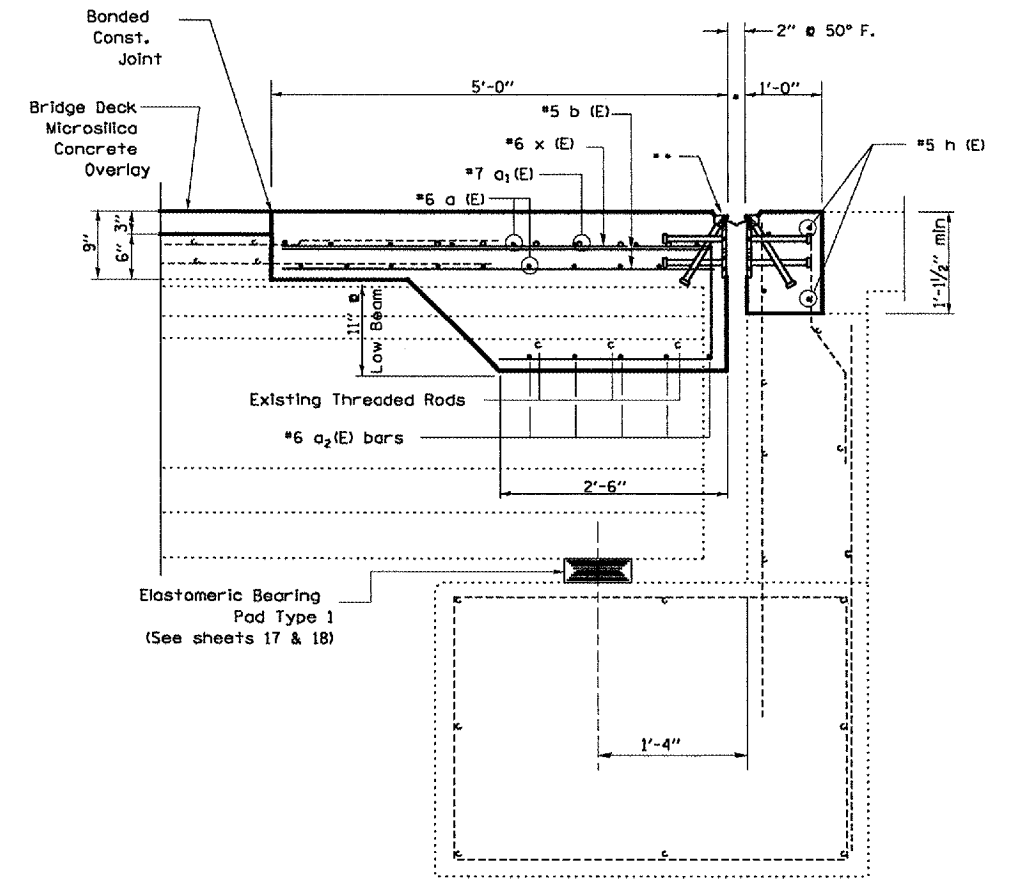


Minimum Bar Lap

- #4 1'-8"
- #5 2'-0"
- #6 2'-7"
- #7 3'-5"
- #8 4'-6"

NOTE: Order a (E) and a₃(E) bars full length and cut to fit skew and use remainder in opposite end

** Strip Seal Expansion Joint Assembly (See sheet 16 of 25)



ABUTMENT SECTION
@ RT <'S

REVISIONS	
NAME	DATE

ILLINOIS DEPARTMENT OF TRANSPORTATION
CONCRETE CONSTRUCTION
NORTH ABUTMENT
 S.N. 050-0168 (NB)
 F.A.I. 412 OVER C. & N.W. RAILROAD
 SECTION (50-GVB)I-1
 STA. 1429+12.74

MARCH 21, 2005 C:\PROJECTS\CMA\NO6\CM301\DETAILS.DGN