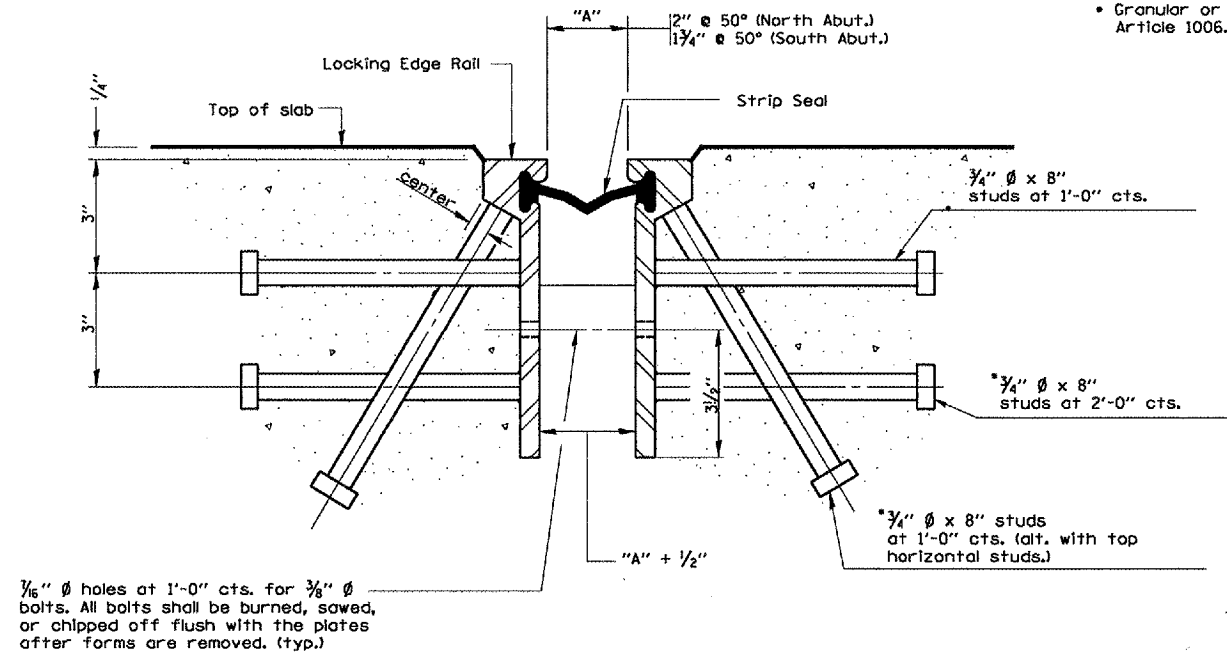


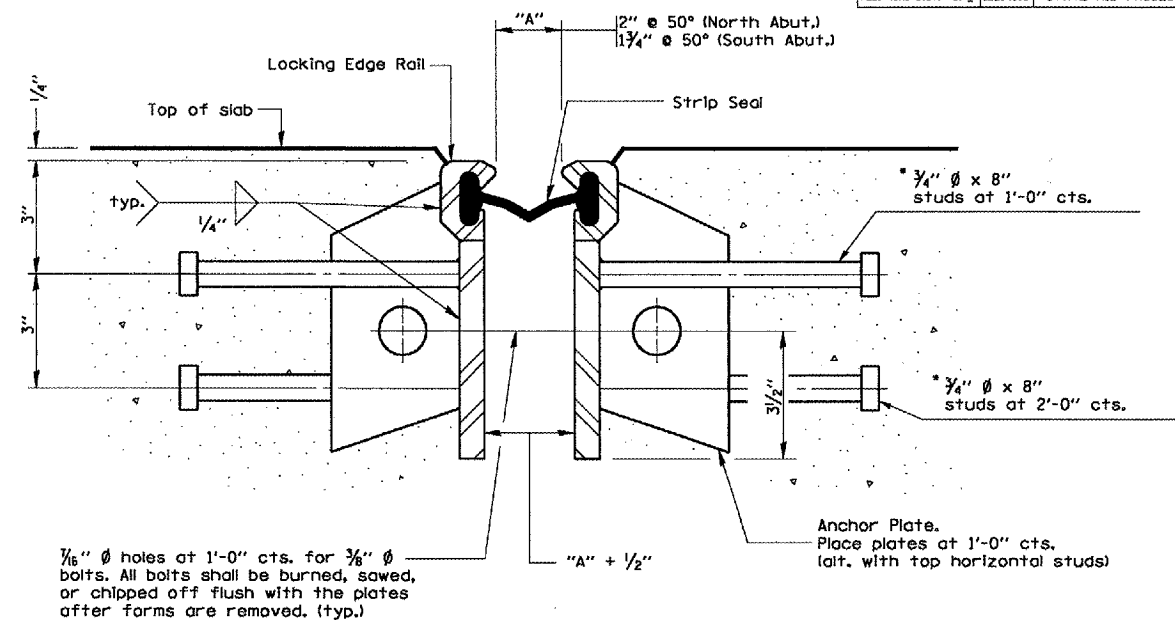
F.A.I. RTE.	SECTION	COUNTY	TOTAL SHEETS	SHEET NO.
412	(50-GVB)-2	LASALLE	25	16
FED. ROAD DIST. NO.		ILLINOIS	STATE AID PROJECT	

* Granular or solid flux filled headed studs conforming to Article 1006.32 of the Std. Specs., automatically end welded.



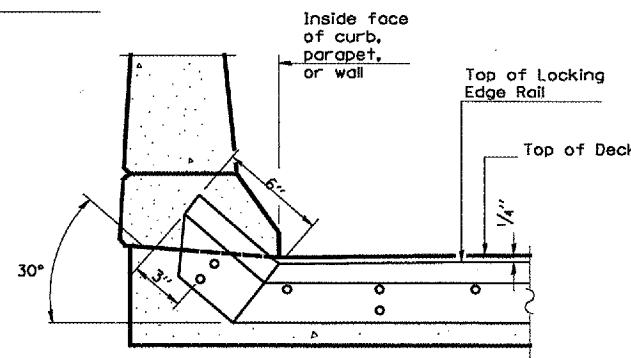
SECTION THRU ROLLED RAIL EXP. JOINT

(480 Studs Required)

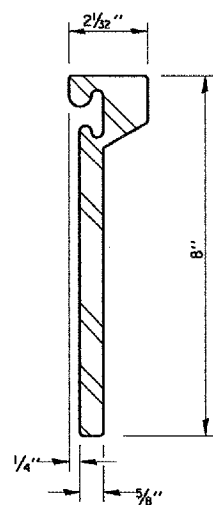


SECTION THRU WELDED RAIL EXP. JOINT

(288 Studs Required)
(192 Anchor Plates Required)

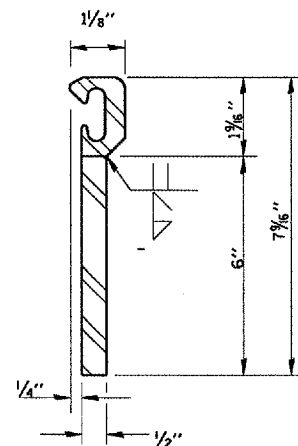


AT PARAPET

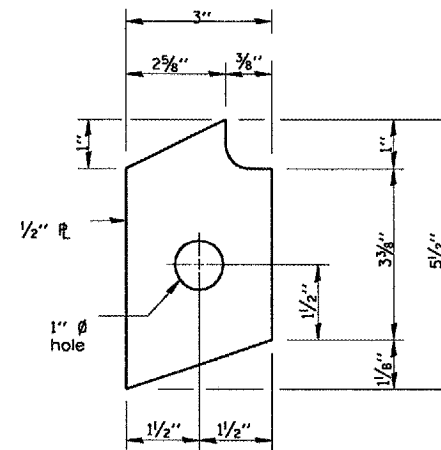


ROLLED (EXTRUDED) RAIL

LOCKING EDGE RAILS



WELDED RAIL



ANCHOR

(for welded rail)

NOTES

The strip seal shall be made continuous and shall have a minimum thickness of 1/4". The configuration of the strip seal shall match the configuration of the Locking Edge Rails.
The height and thickness of the Locking Edge Rails shown are minimum dimensions. The actual configuration of the Locking Edge Rails and matching strip seal may vary from manufacturer to manufacturer. Flanged edge rails will not be allowed.
Locking Edge Rails may be spliced at slope discontinuities and stage construction joints.
The manufacturer's recommended installation methods shall be followed.

REVISIONS	
NAME	DATE

ILLINOIS DEPARTMENT OF TRANSPORTATION
**STRIP SEAL EXPANSION
JOINT ASSEMBLY**
S.N. 050-0168 (NB)
F.A.I. 412 OVER C. & N.W. RAILROAD
SECTION (50-6VB)-1
STA. 1429 + 12.74