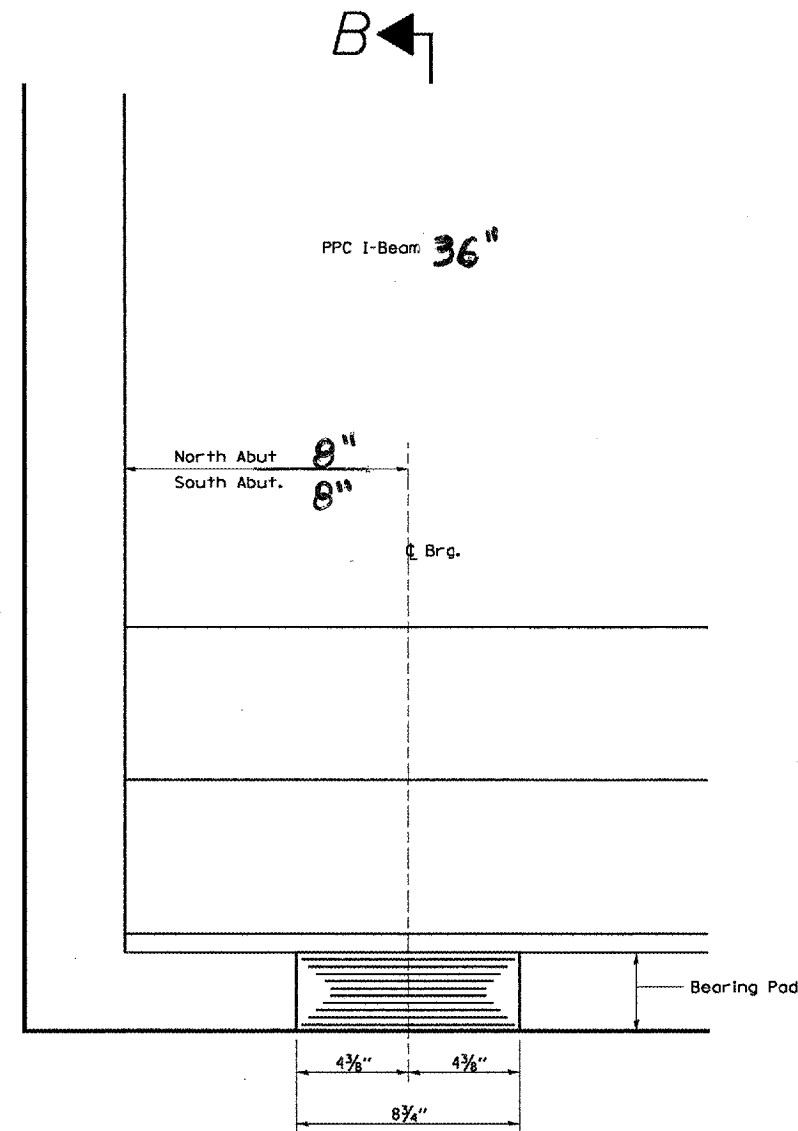
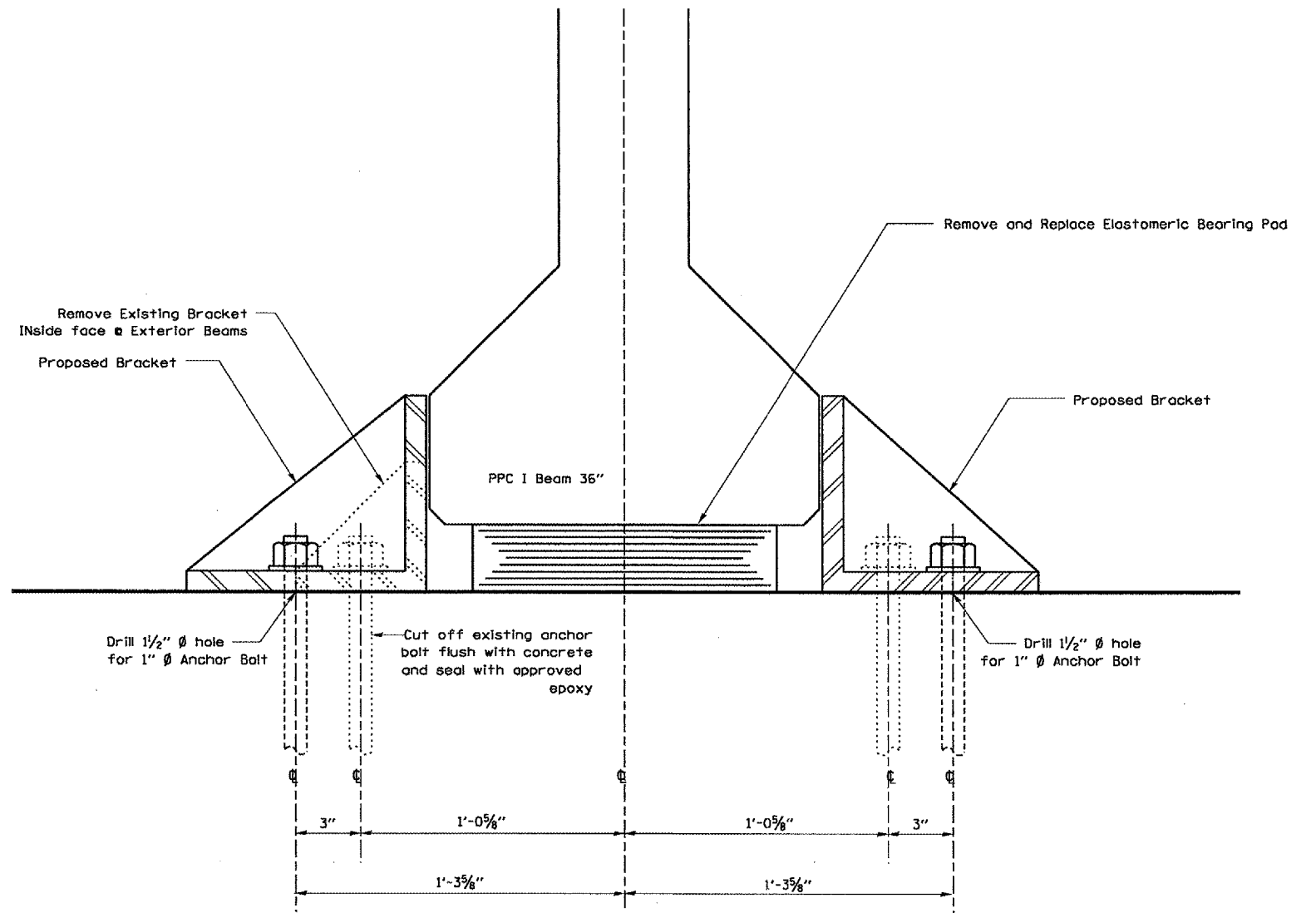


F.A.I. RTE.	SECTION	COUNTY	TOTAL SHEETS	SHEET NO.
412	(50-6VB)-2	LASALLE	25	17
FED. ROAD DIST. NO. -		ILLINOIS	STATE AID PROJECT	



**ELEVATION AT ABUT.**  
(Along & Beam)



**SECTION B-B**

**Reaction for Bearing Replacement**

- R DL = 29.2 kips
- R SDL = 6.7 kips
- R LL = 37.3 kips
- R Imp = 10.3 kips

Min Jack size:  $1.5 \cdot (R DL + R SDL + 1/2(R LL + R Imp)) / 2$  In Tons

NOTE: The minimum Jack size assumes no traffic over bearings being replaced plus a 50% safety factor for the Jack.

REVISIONS	
NAME	DATE

ILLINOIS DEPARTMENT OF TRANSPORTATION  
**BEARING REPLACEMENT DETAILS**  
S.N. 050-0168 (NB)  
F.A.I. 412 OVER C. & N.W. RAILROAD  
SECTION (50-6VB)-1  
STA. 1429 + 12.74

MARCH 21, 2005  
C:\PROJECTS\CMA\IN06\CM301\DETAILS.DGN