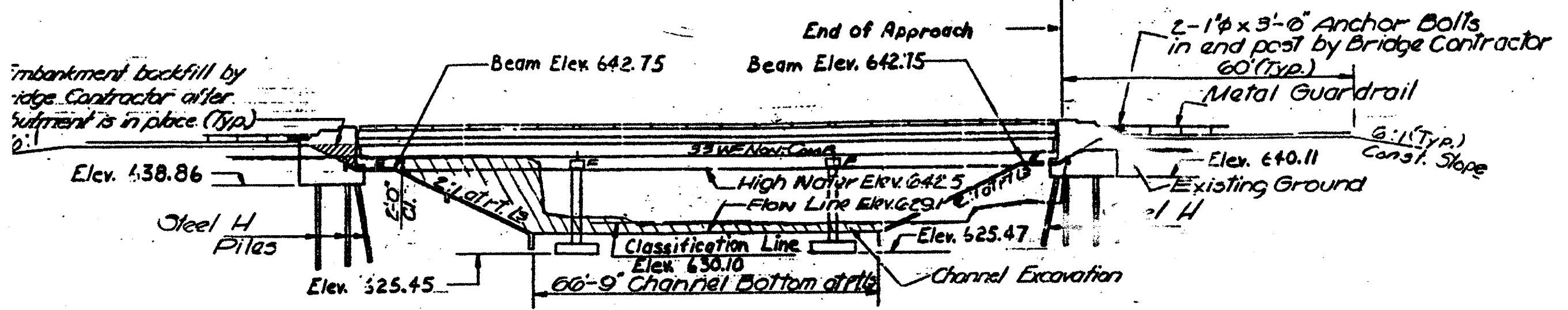
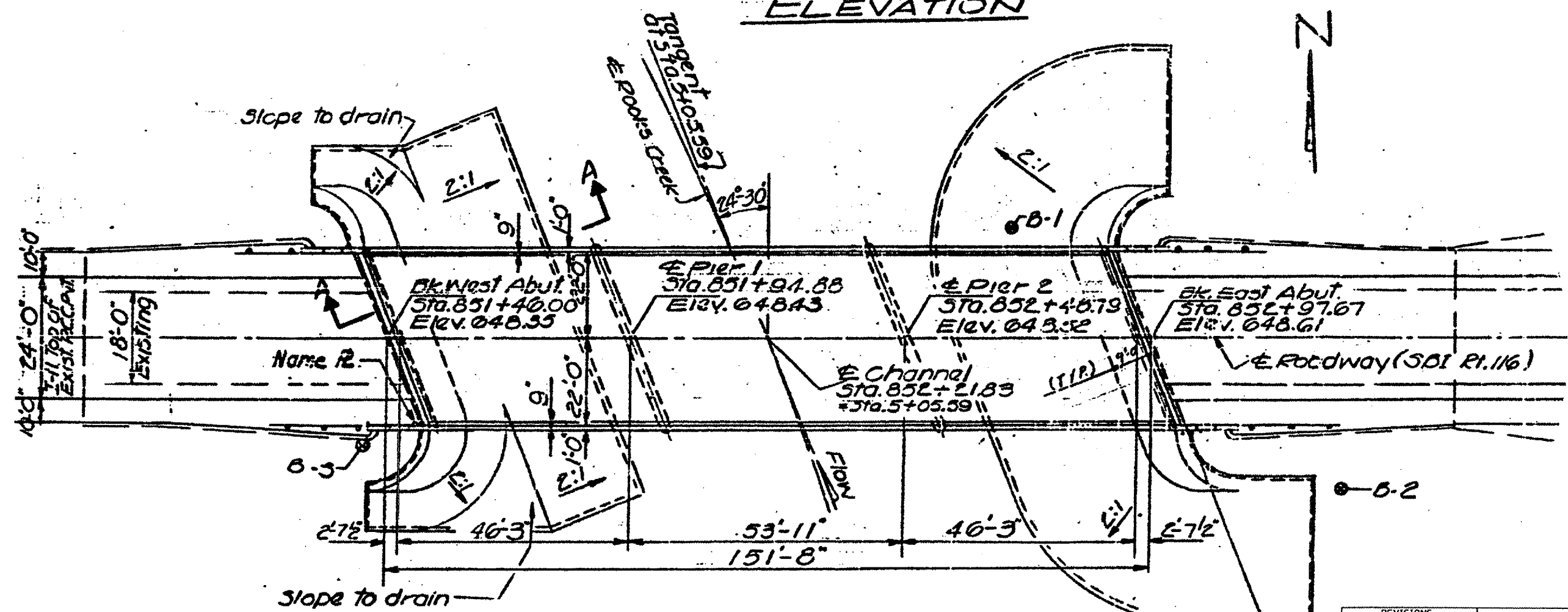


ROUTES	SECTION	COUNTY	TOTAL SHEETS	SHEET NO.
F&P 55 & F&P 673	D-3 BRIDGE PAINTING 2005-2	LIVINGSTON	17	14
ILLINOIS				



**ELEVATION**



**PLAN**

**FOR INFORMATION ONLY**

REVISIONS	
NAME	DATE

ILLINOIS DEPARTMENT OF TRANSPORTATION  
**EXISTING STRUCTURE  
 LOCATION #3  
 S.N. 053-0065**

Date: 03/23/05  
 c:\projects\bridgepoint05\bp2005-2\details.dgn