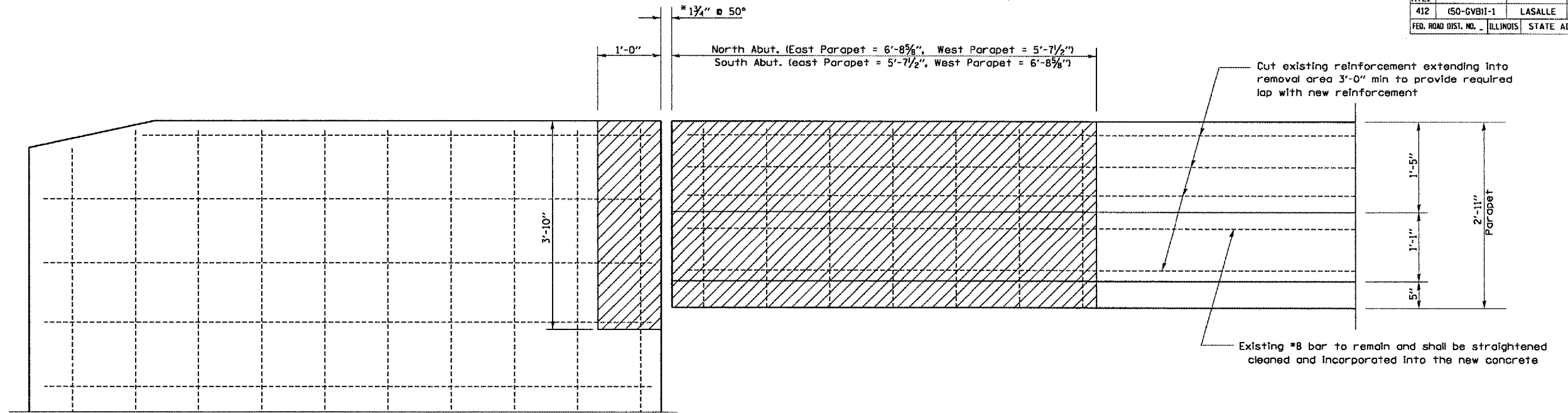
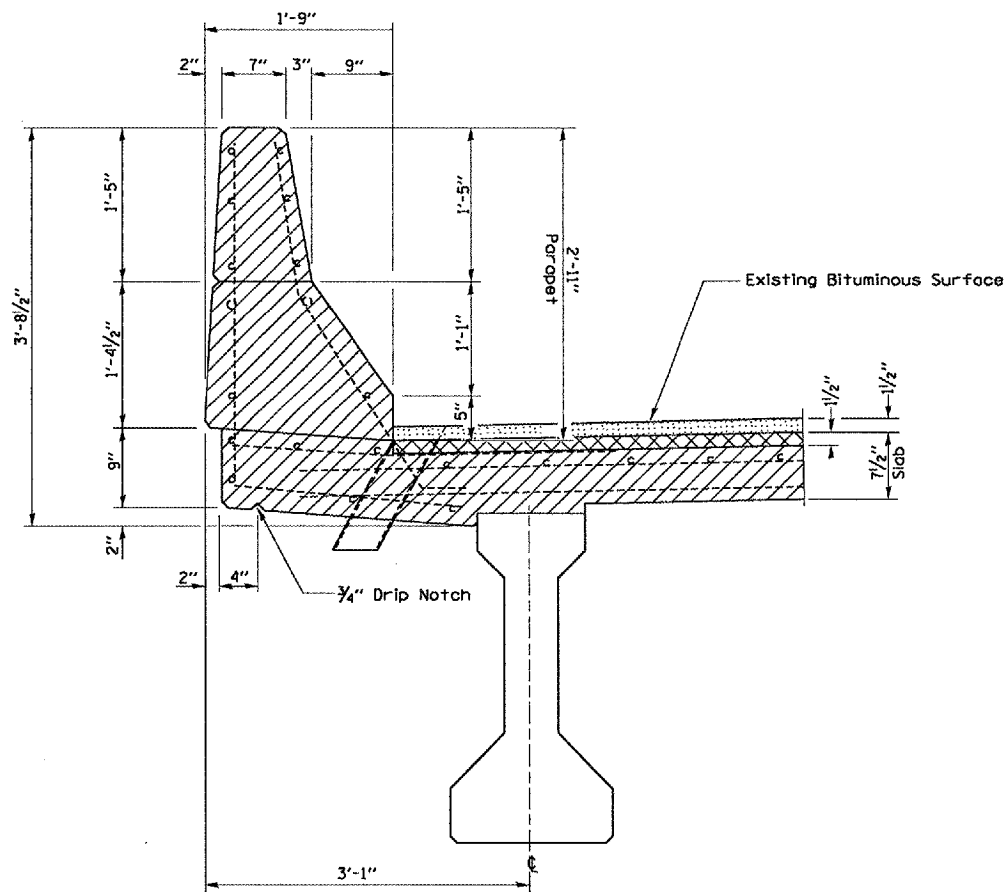


F.A.I. RTE.	SECTION	COUNTY	TOTAL SHEETS	SHEET NO.
412	(50-6VB)I-1	LASALLE	25	8
FED. ROAD DIST. NO. 1		ILLINOIS		STATE AID PROJECT



ELEVATION AT PARAPET



SECTION AT PARAPET

- CONCRETE REMOVAL
- BITUMINOUS CONCRETE REMOVAL - DECK
- BRIDGE DECK HYDRO - SCARIFICATION

REVISIONS	
NAME	DATE

ILLINOIS DEPARTMENT OF TRANSPORTATION
CONCRETE REMOVAL DETAILS
PARAPETS
 S.N. 050-0167 (SB)
 F.A.I. 412 OVER C. & N.W. RAILROAD
 SECTION (50-6VB)I-1
 STA. 1429 + 12.74