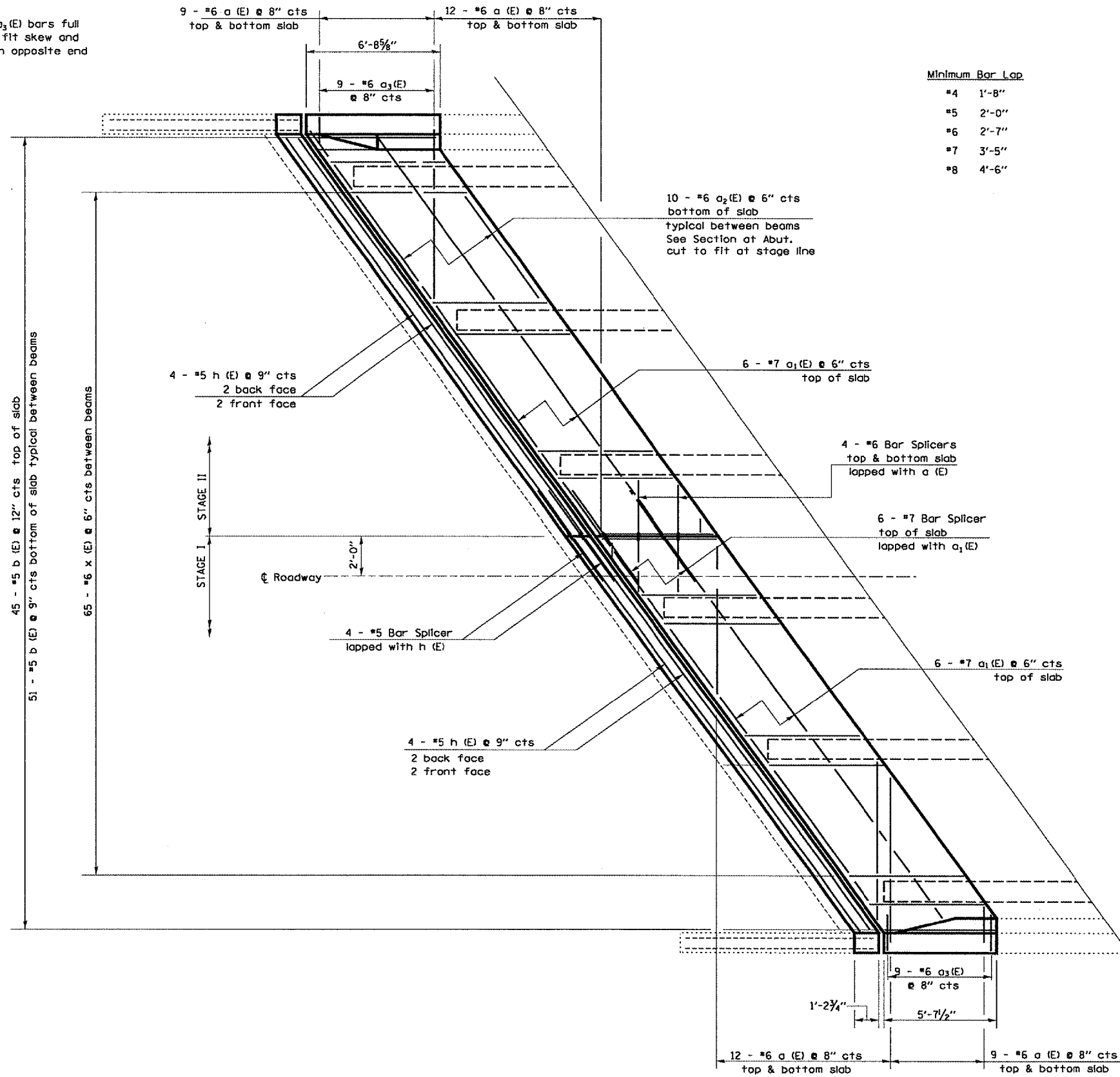


F.A.I. RTE.	SECTION	COUNTY	TOTAL SHEETS	SHEET NO.
412	(50-GVB)I-1	LASALLE	25	11
FED. ROAD DIST. NO.		ILLINOIS	STATE AID PROJECT	

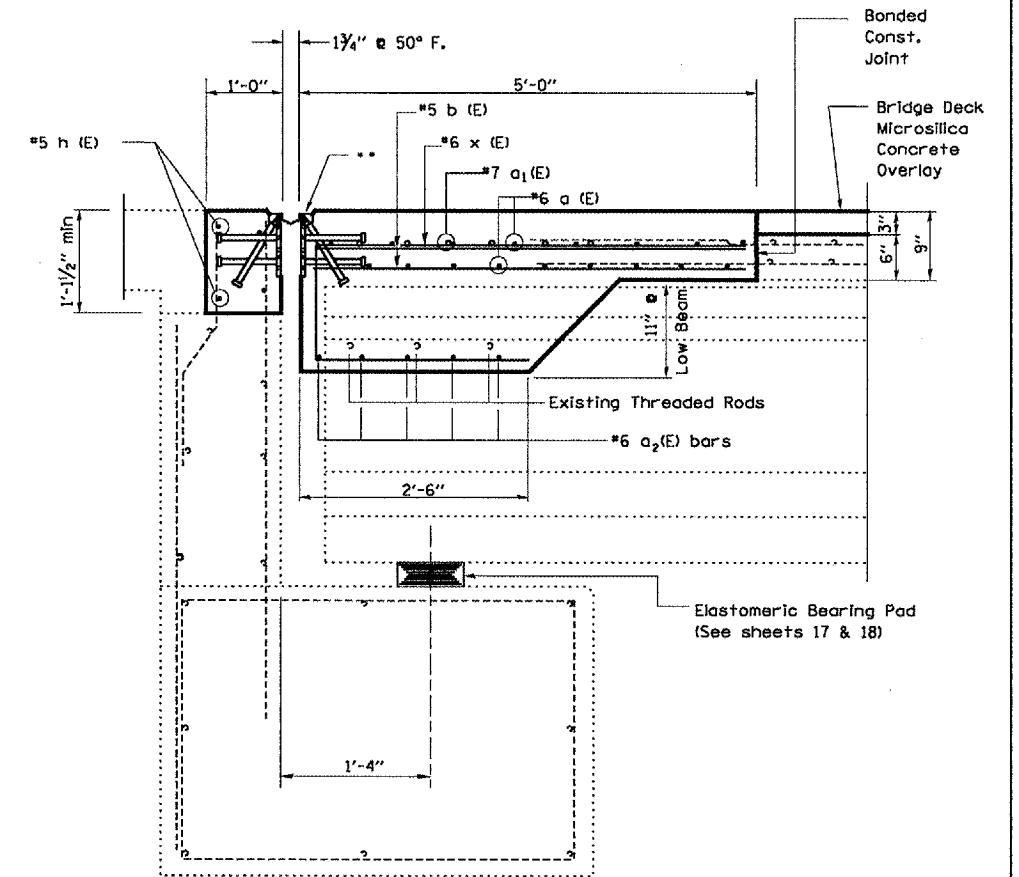
NOTE: Order a (E) and a₃(E) bars full length and cut to fit skew and use remainder in opposite end



Minimum Bar Lap

#4	1'-8"
#5	2'-0"
#6	2'-7"
#7	3'-5"
#8	4'-6"

** Strip Seal expansion joint assembly (See sheet 16 Of 25)



ABUTMENT SECTION

@ RT <'S

PLAN

Order a (E) and a₃(E) bars full length and cut to fit skew and use remainder in opposite end

REVISIONS	
NAME	DATE

ILLINOIS DEPARTMENT OF TRANSPORTATION
CONSTRUCTION DETAILS
SOUTH ABUTMENT
 S.N. 050-0167 (SB)
 F.A.I. 412 OVER C. & N.W. RAILROAD
 SECTION (50-6VB)I-1
 STA. 1429 + 12.74

* DATE-MARCH 06, 2005
 * DCN-CM05/CM327/DETAILS.DGN