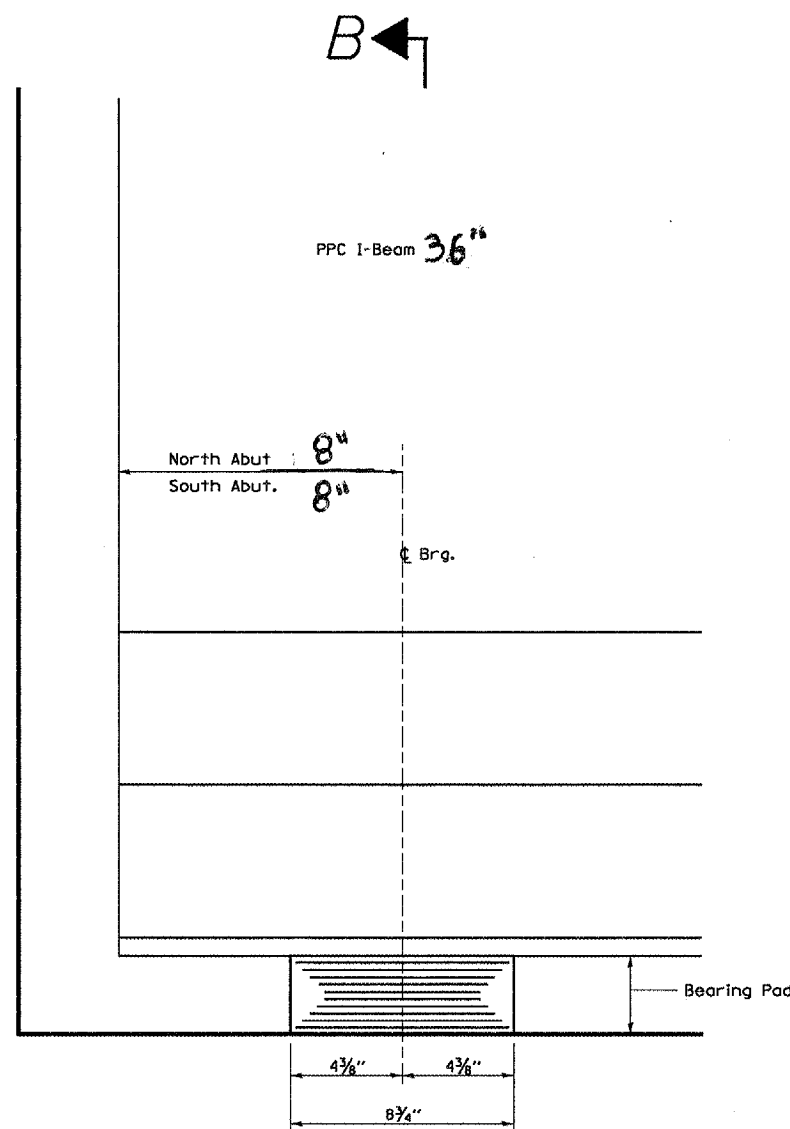
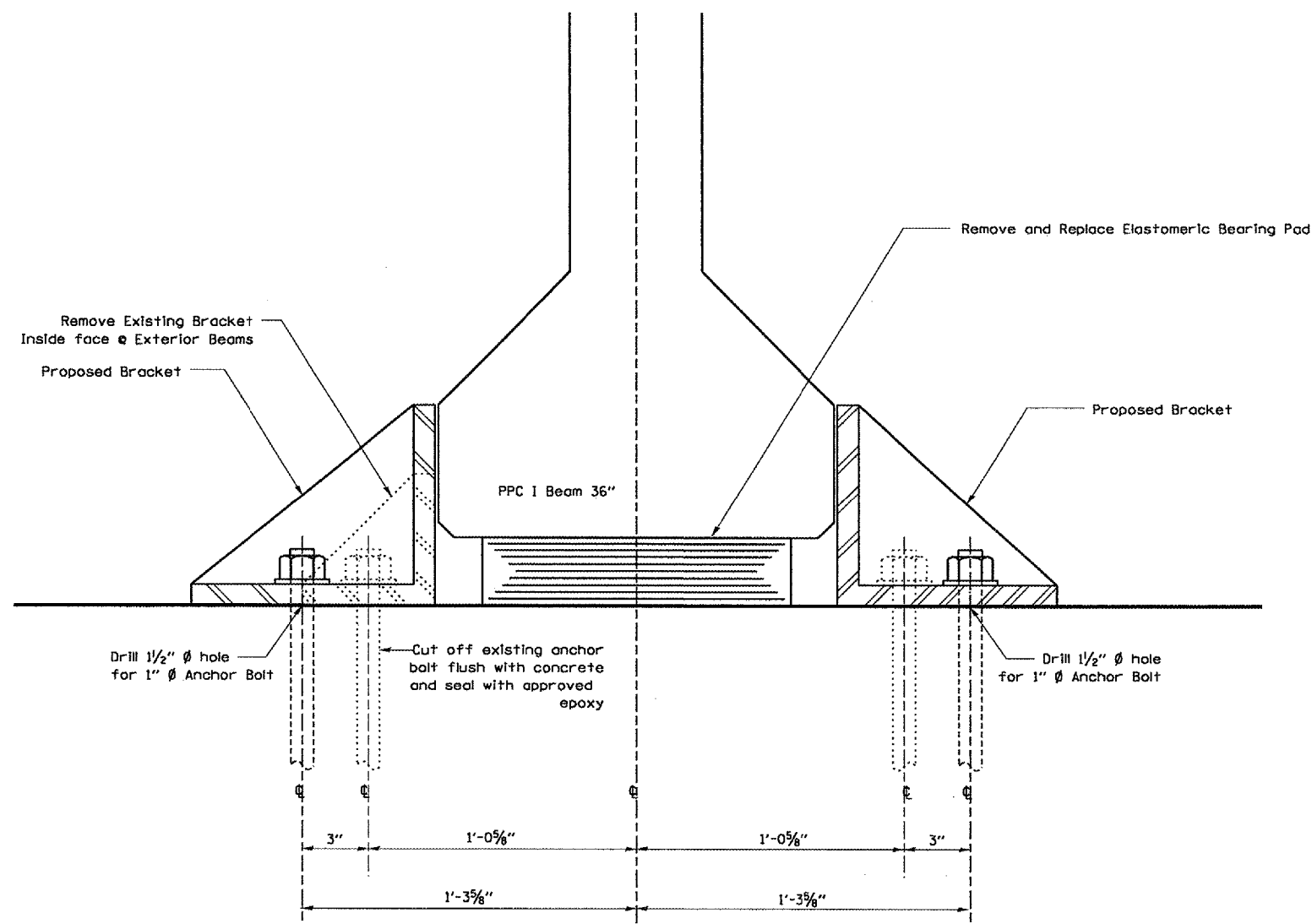


CONTRACT NO.				
F.A.I. RTE.	SECTION	COUNTY	TOTAL SHEETS	SHEET NO.
412	(50-6VB)I-1	LASALLE	25	17
FED. ROAD DIST. NO.		ILLINOIS	NON-FED. AID PROJECT	



ELEVATION AT ABUT.
(Along 4 Beam)



SECTION B-B

Reaction for Bearing Replacement

- R DL = 29.2 klps
- R SDL = 6.7 klps
- R LL = 37.3 klps
- R Imp = 10.3 klps

Min Jack size: $1.5 \cdot (R DL + R SDL + 1/2(R LL + R Imp)) / 2$ in Tons

NOTE: The minimum Jack size assumes no traffic over bearings being replaced plus a 50% safety factor for the Jack.

DATE: MARCH 06, 2005
DGN: CM05/CM327/DETAILS.DGN

REVISIONS	
NAME	DATE

ILLINOIS DEPARTMENT OF TRANSPORTATION
BEARING REPLACEMENT DETAILS
S.N. 050-0167 (SB)
F.A.I. 412 OVER C. & N.W. RAILROAD
SECTION (50-6VB)I-1
STA. 1429 + 12.74