

F.A. RTE.	SECTION	COUNTY	TOTAL SHEETS	SHEET NO.
74	(72-7R-3)	PEORIA	1360	172
STA. 39+150.000		TO STA. 39+500.000		
FED. ROAD DIST. NO.		ILLINOIS FED. AID PROJECT		

### LEGEND

- |  |                                 |  |   |
|--|---------------------------------|--|---|
|  | CONSTRUCTED THIS STAGE          |  | TYPE III BARRICADE WITH FLASHING LIGHTS (ROAD CLOSED) |
|  | TEMPORARY PAVEMENT              |  | SIGN  |
|  | CONSTRUCTED IN PRECEDING STAGES |  | LANE(S) CLOSED  |
|  | DIRECTION OF TRAFFIC            |  | ARROW BOARD   |
|  | TEMPORARY CONCRETE BARRIER      |  | PLASTIC DRUM  |

#### PAVEMENT MARKING LEGEND

- (1X) 100 (4) SOLID
- (2X) 150 (6) SOLID
- (3X) 200 (8) SOLID
- (4X) 300 (12) SOLID
- (5X) 600 (24) SOLID
- (6X) 100 (4) DOUBLE SOLID
- (7X) 100 (4) SKIP DASH
- (8X) 150 (6) SKIP DASH
- (9X) 200 (8) SKIP DASH
- (10X) 200 (8) DOTTED
- (11X) LETTERS AND ARROWS

#### RAISED REFLECTIVE PAVEMENT MARKERS

- 1 < ONE-WAY CRYSTAL MARKER AT 24.38 m(80') CENTERS
- 2 < ONE-WAY CRYSTAL MARKER AT 12.19 m(40') CENTERS
- 3 < ONE-WAY CRYSTAL MARKER AT 6.10 m(20') CENTERS
- 4 < ONE-WAY AMBER MARKER AT 12.19 m(40') CENTERS
- 5 < TWO-WAY AMBER MARKER AT 12.19 m(40') CENTERS FOR SPEEDS LESS THAN 45 MPH
- 6 < TWO-WAY AMBER MARKER AT 24.38 m(80') CENTERS FOR SPEEDS GREATER THAN 45 MPH

WHERE "X" DESIGNATES:

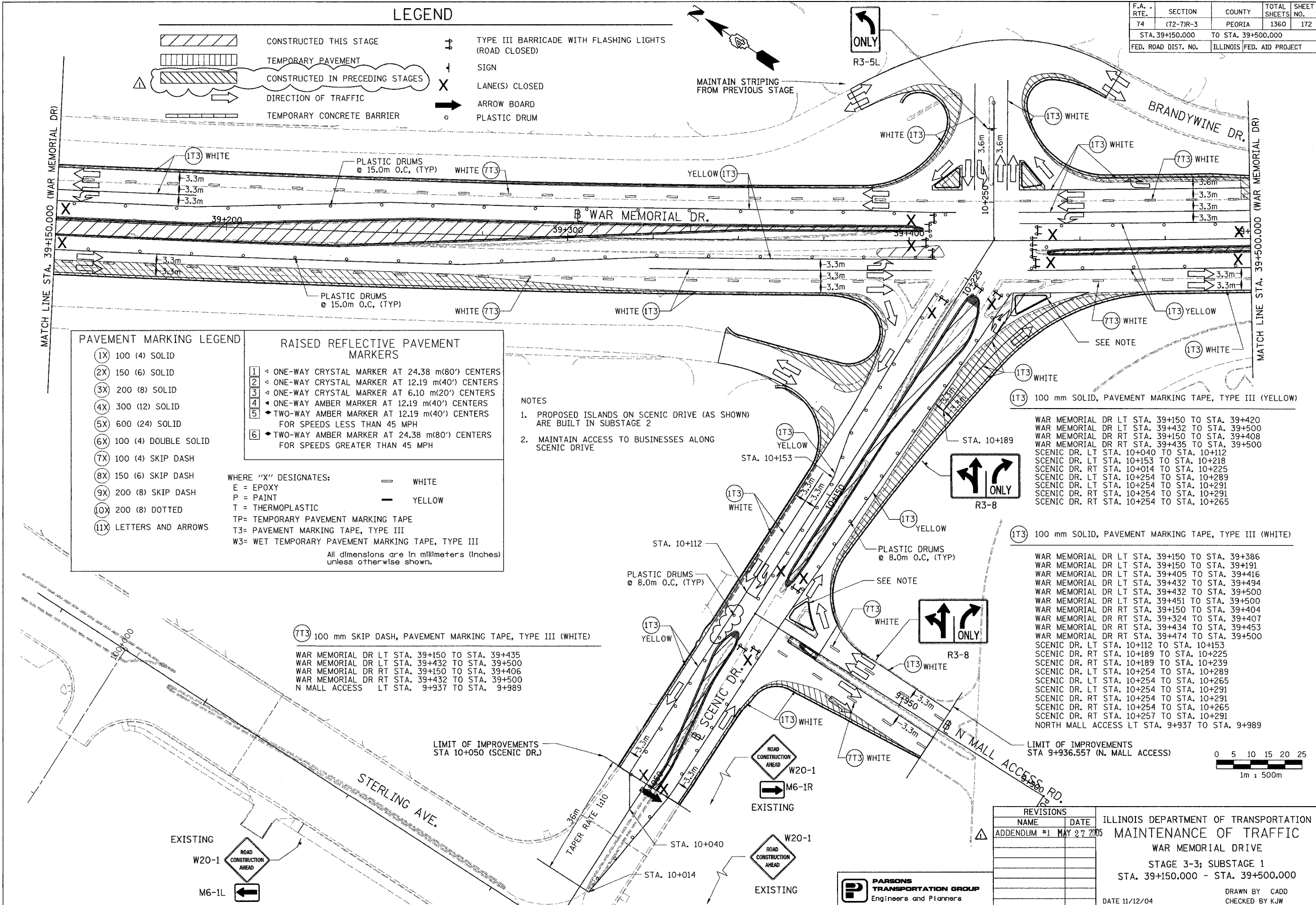
E = EPOXY	— WHITE
P = PAINT	— YELLOW
T = THERMOPLASTIC	

TP= TEMPORARY PAVEMENT MARKING TAPE  
T3= PAVEMENT MARKING TAPE, TYPE III  
W3= WET TEMPORARY PAVEMENT MARKING TAPE, TYPE III

All dimensions are in millimeters (Inches) unless otherwise shown.

#### NOTES

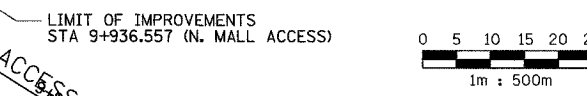
- PROPOSED ISLANDS ON SCENIC DRIVE (AS SHOWN) ARE BUILT IN SUBSTAGE 2
- MAINTAIN ACCESS TO BUSINESSES ALONG SCENIC DRIVE



WAR MEMORIAL DR LT STA. 39+150 TO STA. 39+420  
WAR MEMORIAL DR RT STA. 39+150 TO STA. 39+500  
WAR MEMORIAL DR RT STA. 39+150 TO STA. 39+408  
WAR MEMORIAL DR RT STA. 39+435 TO STA. 39+500  
SCENIC DR. LT STA. 10+040 TO STA. 10+112  
SCENIC DR. LT STA. 10+153 TO STA. 10+218  
SCENIC DR. RT STA. 10+014 TO STA. 10+225  
SCENIC DR. LT STA. 10+254 TO STA. 10+289  
SCENIC DR. LT STA. 10+254 TO STA. 10+291  
SCENIC DR. RT STA. 10+254 TO STA. 10+291

WAR MEMORIAL DR LT STA. 39+150 TO STA. 39+386  
WAR MEMORIAL DR LT STA. 39+150 TO STA. 39+416  
WAR MEMORIAL DR LT STA. 39+405 TO STA. 39+416  
WAR MEMORIAL DR LT STA. 39+432 TO STA. 39+494  
WAR MEMORIAL DR LT STA. 39+432 TO STA. 39+500  
WAR MEMORIAL DR LT STA. 39+451 TO STA. 39+500  
WAR MEMORIAL DR RT STA. 39+150 TO STA. 39+404  
WAR MEMORIAL DR RT STA. 39+324 TO STA. 39+407  
WAR MEMORIAL DR RT STA. 39+434 TO STA. 39+453  
WAR MEMORIAL DR RT STA. 39+474 TO STA. 39+500  
SCENIC DR. LT STA. 10+112 TO STA. 10+153  
SCENIC DR. RT STA. 10+189 TO STA. 10+225  
SCENIC DR. RT STA. 10+189 TO STA. 10+239  
SCENIC DR. LT STA. 10+254 TO STA. 10+289  
SCENIC DR. LT STA. 10+254 TO STA. 10+265  
SCENIC DR. LT STA. 10+254 TO STA. 10+291  
SCENIC DR. RT STA. 10+254 TO STA. 10+291  
SCENIC DR. RT STA. 10+254 TO STA. 10+265  
SCENIC DR. RT STA. 10+257 TO STA. 10+291  
NORTH MALL ACCESS LT STA. 9+937 TO STA. 9+989

(7T3) 100 mm SKIP DASH, PAVEMENT MARKING TAPE, TYPE III (WHITE)  
WAR MEMORIAL DR LT STA. 39+150 TO STA. 39+435  
WAR MEMORIAL DR LT STA. 39+432 TO STA. 39+500  
WAR MEMORIAL DR RT STA. 39+150 TO STA. 39+406  
WAR MEMORIAL DR RT STA. 39+432 TO STA. 39+500  
N MALL ACCESS LT STA. 9+937 TO STA. 9+989



REVISIONS	
NAME	DATE
ADDENDUM #1	MAY 27 2005

ILLINOIS DEPARTMENT OF TRANSPORTATION  
**MAINTENANCE OF TRAFFIC**  
WAR MEMORIAL DRIVE  
STAGE 3-3; SUBSTAGE 1  
STA. 39+150.000 - STA. 39+500.000

**PARSONS TRANSPORTATION GROUP**  
Engineers and Planners

DATE 11/12/04  
DRAWN BY CADD  
CHECKED BY KJW