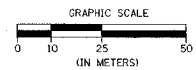


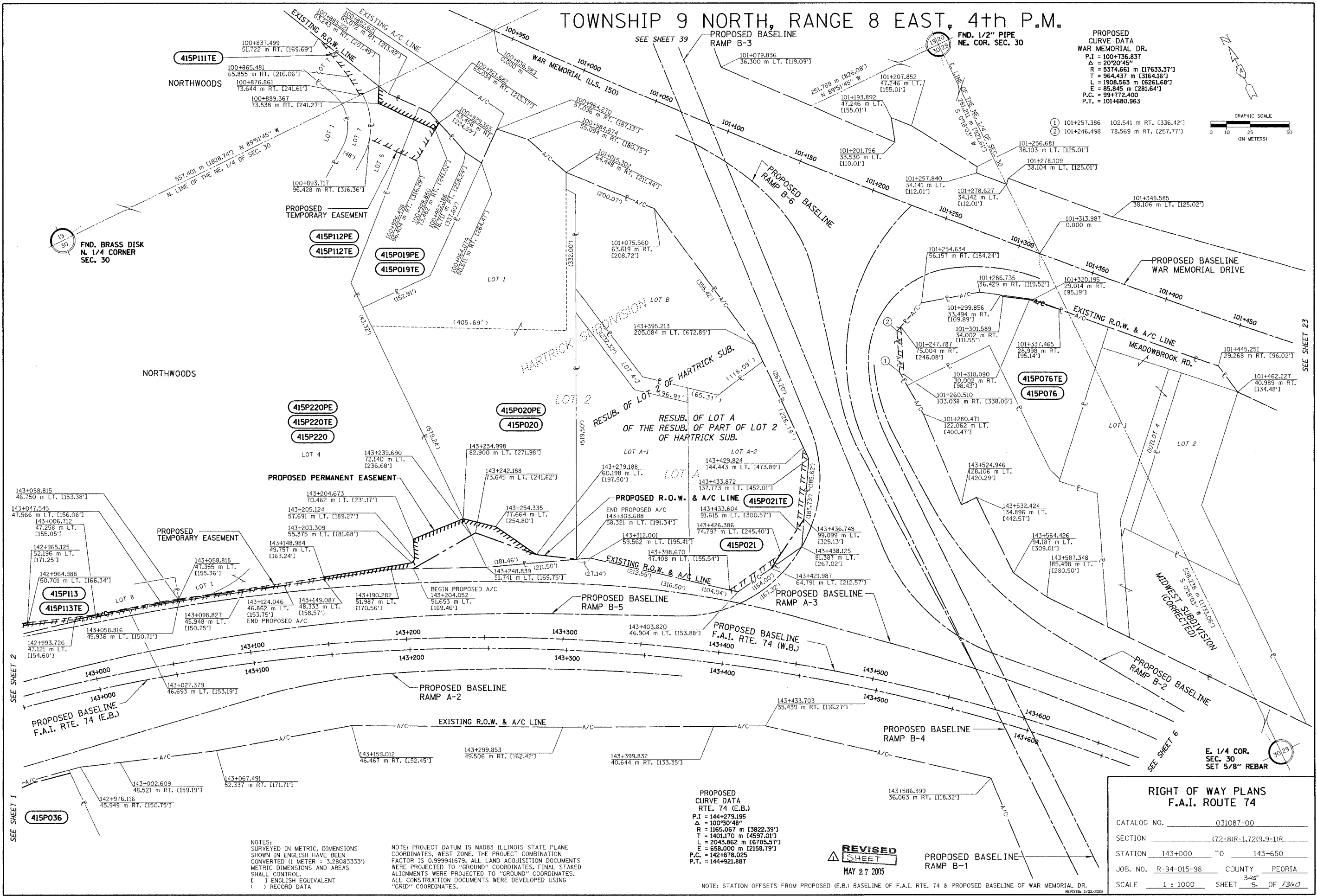
# TOWNSHIP 9 NORTH, RANGE 8 EAST, 4th P.M.

FND. 1/2" PIPE  
NE. COR. SEC. 30

PROPOSED CURVE DATA  
WAR MEMORIAL DR.  
P.I = 100+736.837  
Δ = 20°20'45"  
R = 5374.661 m [17633.37']  
T = 964.437 m [3164.16']  
L = 1908.563 m [6261.68']  
E = 85.845 m [281.64']  
P.C. = 99+772.400  
P.T. = 101+680.963



APPROVED BY \_\_\_\_\_  
DISTRICT ENGINEER  
DATE \_\_\_\_\_



FND. BRASS DISK  
N. 1/4 CORNER  
SEC. 30

SEE SHEET 2

SEE SHEET 1

SEE SHEET 23

SEE SHEET 6

E. 1/4 COR.  
SEC. 30  
SET 5/8" REBAR

RIGHT OF WAY PLANS F.A.I. ROUTE 74	
CATALOG NO.	031087-00
SECTION	(72-8)R-1.72(9.9-1)R
STATION	143+000 TO 143+650
JOB. NO.	R-94-015-98 COUNTY PEORIA
SCALE	1 : 1000 SHEET 325 OF 1360

PROPOSED CURVE DATA  
RTE. 74 (E.B.)  
P.I = 144+279.195  
Δ = 100°30'48"  
R = 1165.067 m [3822.39']  
T = 1401.170 m [4597.01']  
L = 2043.862 m [6705.57']  
E = 658.000 m [2158.79']  
P.C. = 142+878.025  
P.T. = 144+921.867

**REVISED SHEET**  
MAY 27 2005

NOTE: STATION OFFSETS FROM PROPOSED (E.B.) BASELINE OF F.A.I. RTE. 74 & PROPOSED BASELINE OF WAR MEMORIAL DR.

NOTES:  
SURVEYED IN METRIC, DIMENSIONS SHOWN IN ENGLISH HAVE BEEN CONVERTED (1 METER = 3.28083333') METRIC DIMENSIONS AND AREAS SHALL CONTROL.  
( ) ENGLISH EQUIVALENT ( ) RECORD DATA

NOTE: PROJECT DATUM IS NAD83 ILLINOIS STATE PLANE COORDINATES, WEST ZONE. THE PROJECT COMBINATION FACTOR IS 0.999941679. ALL LAND ACQUISITION DOCUMENTS WERE PROJECTED TO "GROUND" COORDINATES. FINAL STAKED ALIGNMENTS WERE PROJECTED TO "GROUND" COORDINATES. ALL CONSTRUCTION DOCUMENTS WERE DEVELOPED USING "GRID" COORDINATES.

DRAWN BY \_\_\_\_\_  
WRITTEN BY \_\_\_\_\_  
CHECKED BY \_\_\_\_\_  
INSPECTED BY \_\_\_\_\_