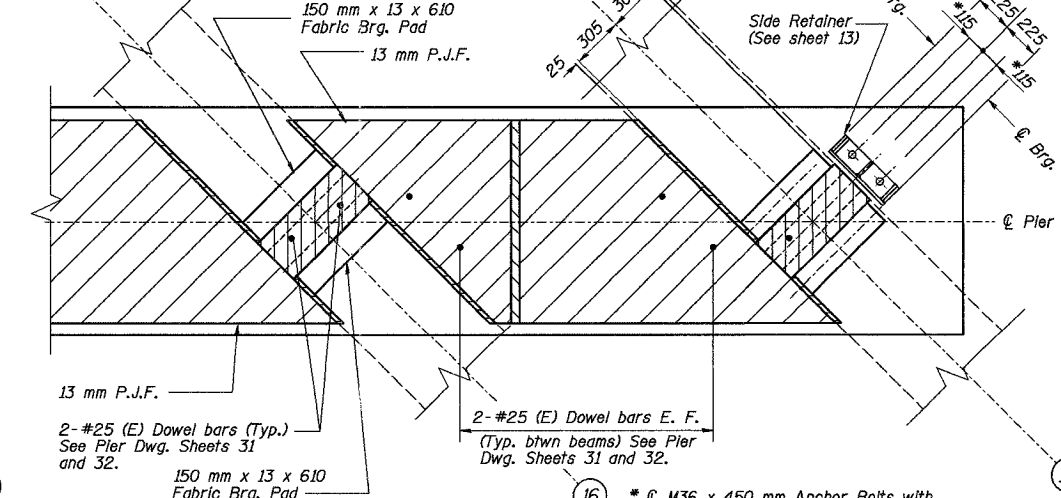
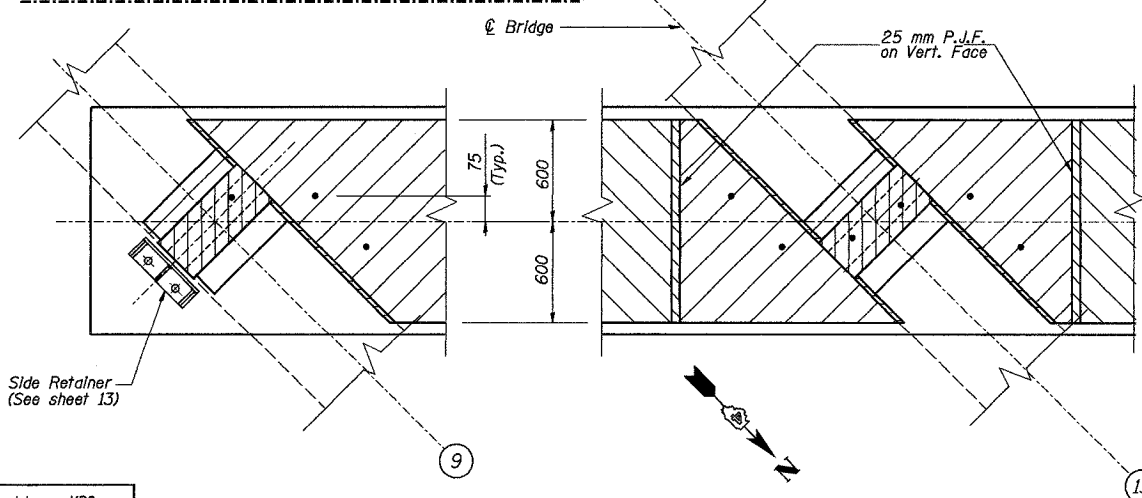
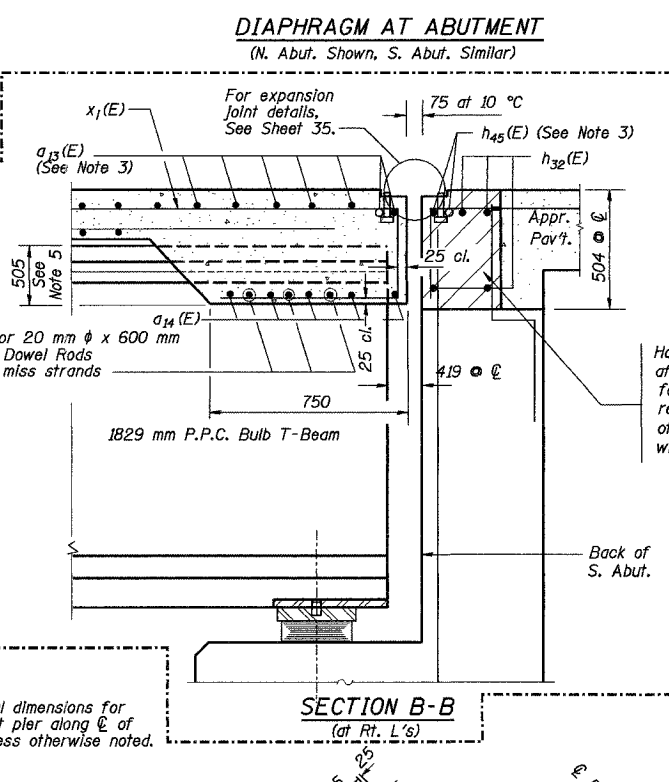
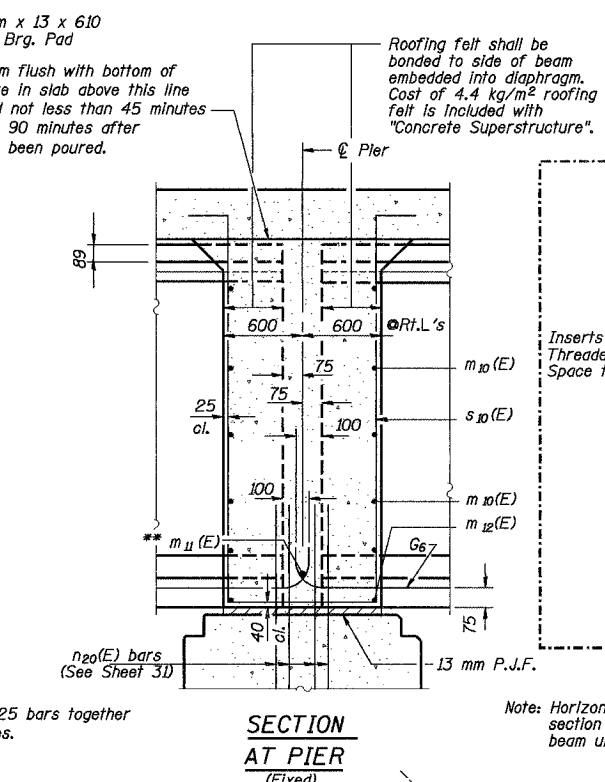
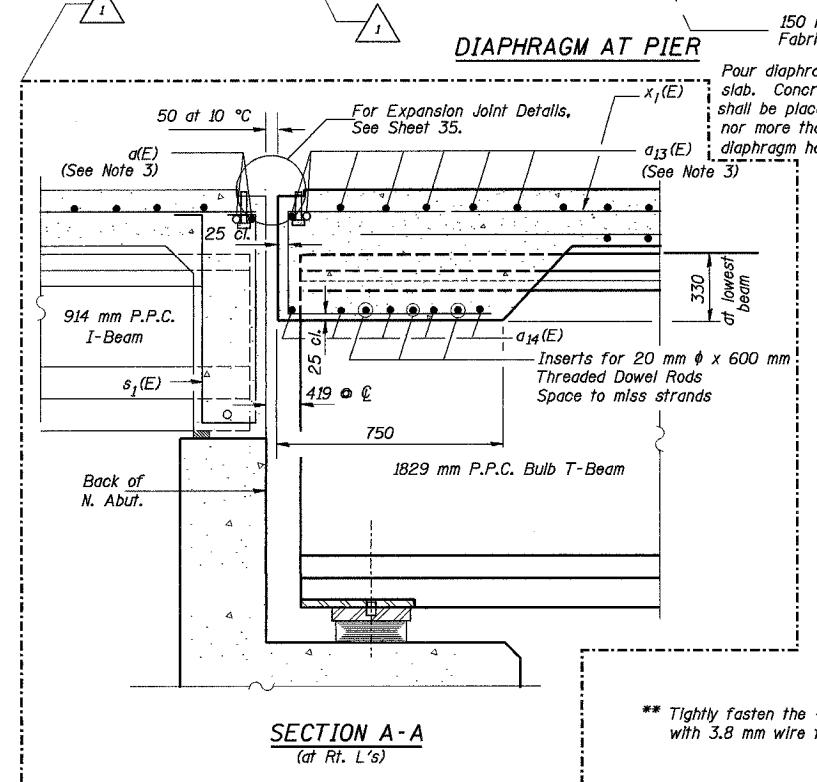
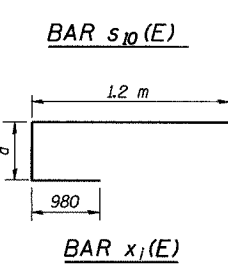
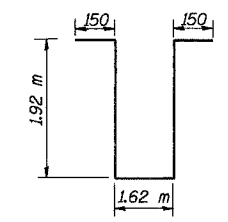
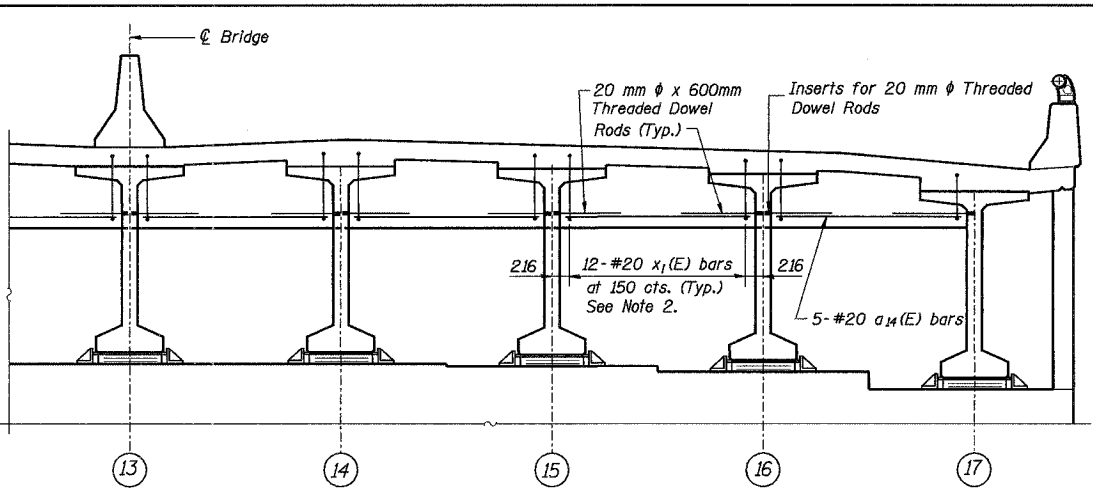
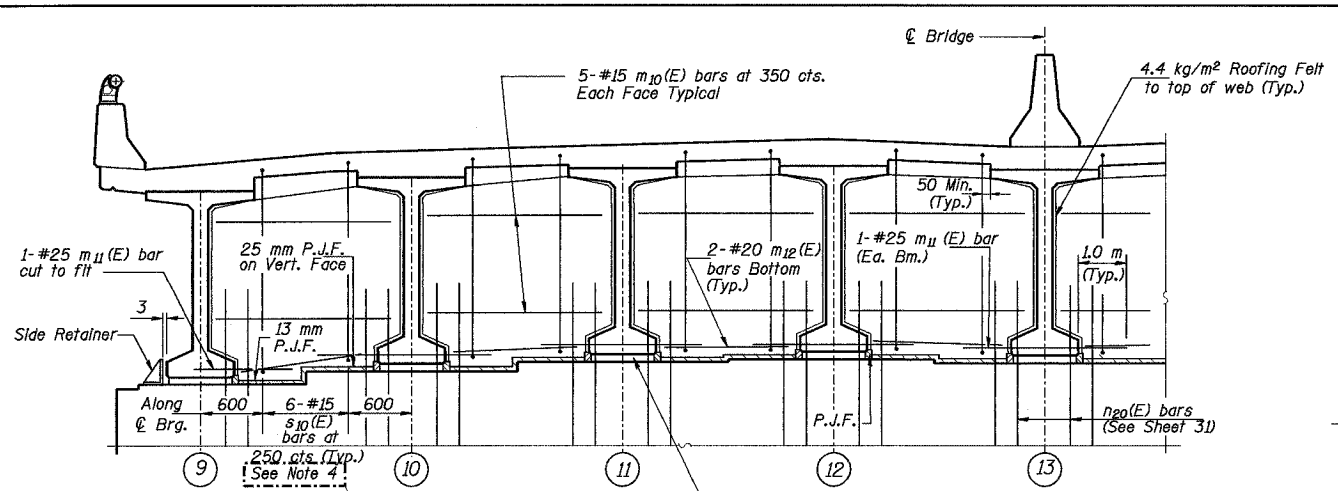


ROUTE NO.	SECT.	COUNTY	SHEET NO.	TOTAL SHEETS
F.A.I. 74	(72-7) R-3	PEORIA	510	1360
FED. ROAD DIST. NO. 7	ILLINOIS	FED. AID PROJECT	CONTRACT NO. 68200	



Bar	a	Location
N. Abutment x(E)	720	from (9) to (12)
x1(E)	680	from (12) to (14)
x2(E)	620	btwn (14) & (15)
x3(E)	550	btwn (15) & (16)
x4(E)	470	btwn (16) & (17)
S. Abutment x5(E)	700	from (9) to (17)

- Notes:
- Reinforcement bars shown on this sheet are included in Bill of Material on Sheet 13.
 - #20 x1(E) bars are parallel to beams. See table for x1(E) designations and placement.
 - Place a(E), a13(E) and h45(E) bars in back of anchor bolt as shown if required to maintain 25 mm cl. (+0-3 mm). Anchor bolts should be tied to a(E), a13(E) and h45(E) bars.
 - #15 s10(E) bars are parallel to beams.
 - Reinforcement bars designated (E) shall be epoxy coated.
 - S. Abut. bottom of diaphragm, runs parallel to top of deck.
 - All dimensions are in millimeters (mm) except as noted.

REVISION	DATE	DESCRIPTION
1	3/28/05	Note 3 Added, numbering revised
1	3/28/05	Sections A-A and B-B appended

STATE OF ILLINOIS
DEPARTMENT OF TRANSPORTATION

DIAPHRAGM DETAILS - SPANS 2 & 3

RAMPS B-3 AND B-5 OVER WAR MEMORIAL DR. AND RAMP B-6
F.A.I. ROUTE 74 SECTION (72-7) R-3
PEORIA COUNTY STA. 10+618.61 (RAMP B-3)
STA. 10+472.60 (RAMP B-5)
STRUCTURE NUMBER 072-0190

PARSONS TRANSPORTATION GROUP
CHICAGO, ILLINOIS

DRAWING NO.	SCALE	DATE	SHEET NO.
11	N.T.S.	2-21-03	11

Date: 04/20/2005 Time: 03:16:17 PM File: P:\643996\structure\072-0190\sheet\tracings\SD0002-1A0720190.dgn

Designed by: MBG
Checked by: AK
Drafted by: FTE
Checked by: AK

PLAN - TOP OF PIER DETAIL
Revised MAY 27 2005

* M36 x 450 mm Anchor Bolts with 75 x 75 x 8 mm plate washer under nut. Holes in cap to be drilled after beams are in place.