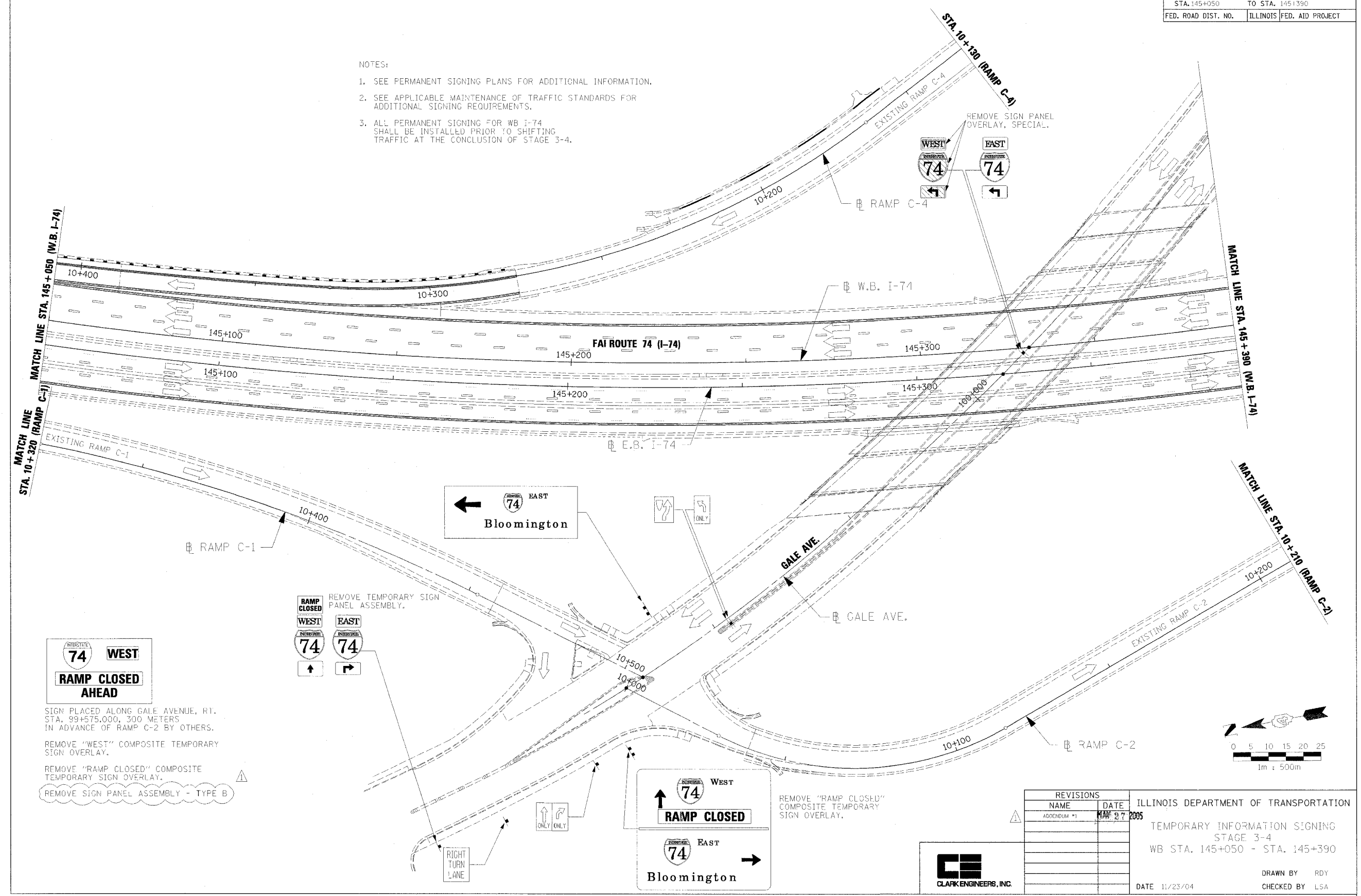


F.A.I. RTE.	SECTION	COUNTY	TOTAL SHEETS	SHEET NO.
74	1/2-7/11-3	PEORIA	1360	964
STA. 145+050		TO STA. 145+390		
FED. ROAD DIST. NO.		ILLINOIS FED. AID PROJECT		

- NOTES:
1. SEE PERMANENT SIGNING PLANS FOR ADDITIONAL INFORMATION.
 2. SEE APPLICABLE MAINTENANCE OF TRAFFIC STANDARDS FOR ADDITIONAL SIGNING REQUIREMENTS.
 3. ALL PERMANENT SIGNING FOR WB I-74 SHALL BE INSTALLED PRIOR TO SHIFTING TRAFFIC AT THE CONCLUSION OF STAGE 3-4.



INTERSTATE 74 WEST
RAMP CLOSED AHEAD

SIGN PLACED ALONG GALE AVENUE, RT. STA. 99+575.000, 300 METERS IN ADVANCE OF RAMP C-2 BY OTHERS.
 REMOVE "WEST" COMPOSITE TEMPORARY SIGN OVERLAY.
 REMOVE "RAMP CLOSED" COMPOSITE TEMPORARY SIGN OVERLAY.
 REMOVE SIGN PANEL ASSEMBLY - TYPE B

RAMP CLOSED
WEST
74
EAST
74

REMOVE TEMPORARY SIGN PANEL ASSEMBLY.

WEST
74
RAMP CLOSED
EAST
74
 Bloomington

REMOVE "RAMP CLOSED" COMPOSITE TEMPORARY SIGN OVERLAY.

REVISIONS	
NAME	DATE
ADDENDUM #1	MAR 27 2005

ILLINOIS DEPARTMENT OF TRANSPORTATION
 TEMPORARY INFORMATION SIGNING
 STAGE 3-4
 WB STA. 145+050 - STA. 145+390
 DATE 11/23/04
 DRAWN BY RDY
 CHECKED BY LSA



11/23/04 2:54 PM