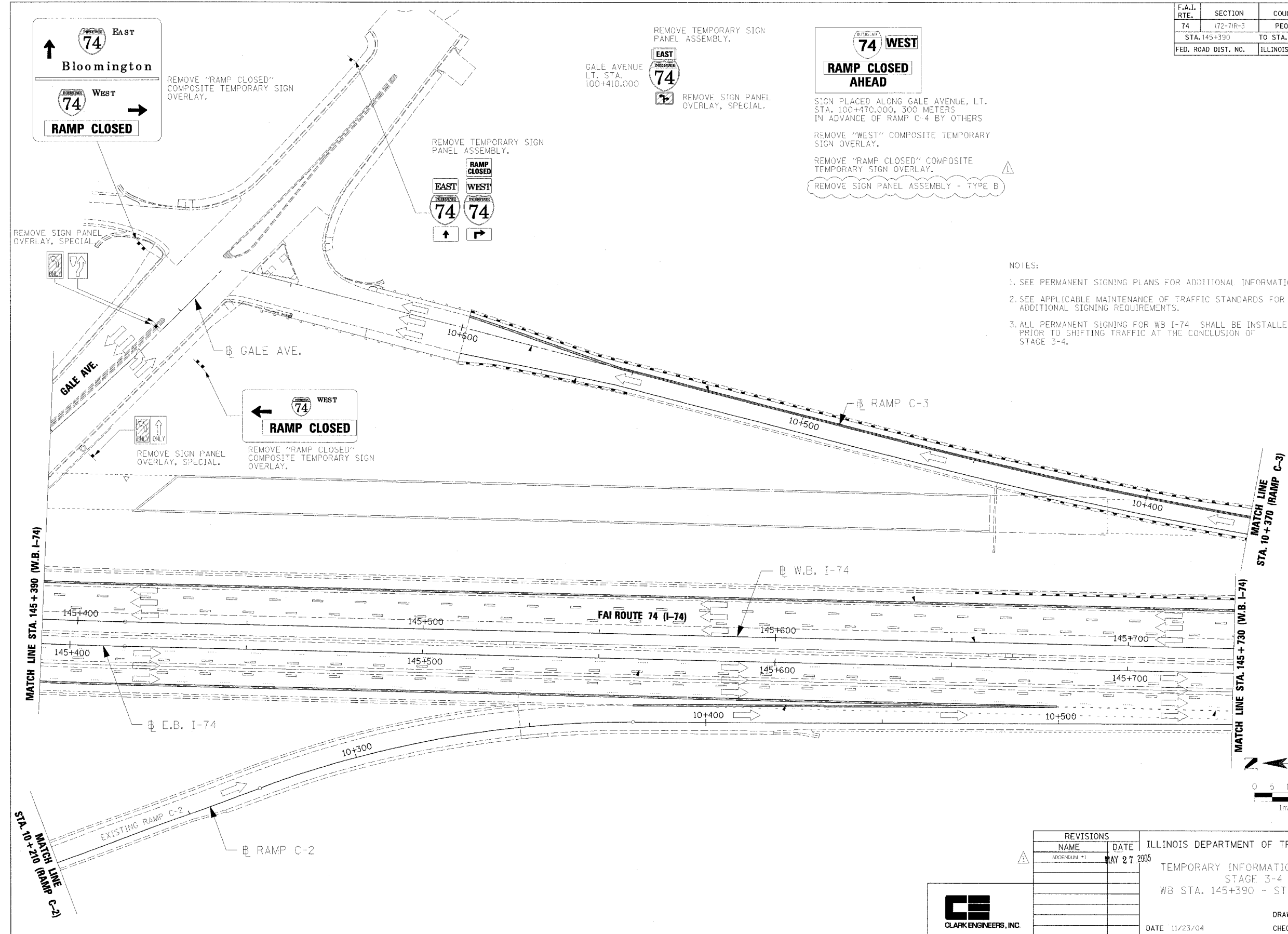
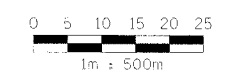


F.A.I. RTE.	SECTION	COUNTY	TOTAL SHEETS	SHEET NO.
74	172-TIR-3	PEORIA	1360	965
STA. 145+390 TO STA. 145+730			ILLINOIS FED. AID PROJECT	



- NOTES:
- SEE PERMANENT SIGNING PLANS FOR ADDITIONAL INFORMATION.
 - SEE APPLICABLE MAINTENANCE OF TRAFFIC STANDARDS FOR ADDITIONAL SIGNING REQUIREMENTS.
 - ALL PERMANENT SIGNING FOR WB I-74 SHALL BE INSTALLED PRIOR TO SHIFTING TRAFFIC AT THE CONCLUSION OF STAGE 3-4.



REVISIONS		ILLINOIS DEPARTMENT OF TRANSPORTATION
NAME	DATE	
ADDENDUM #1	MAY 27 2005	TEMPORARY INFORMATION SIGNING STAGE 3-4 WB STA. 145+390 - STA. 145+730 DRAWN BY RDY CHECKED BY LSA DATE 11/23/04



11/23/04 11:58:52 AM