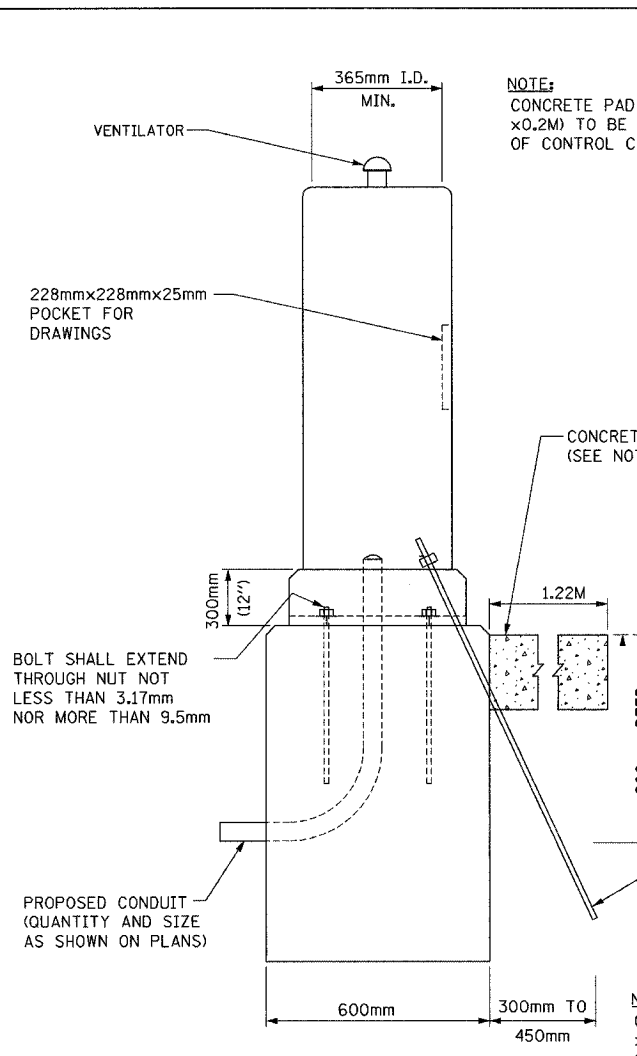


F.A.I. RTE.	SECTION	COUNTY	TOTAL SHEETS	SHEET NO.
74	(72-71R-3	PEORIA	1360	1224
STA.		TO STA.		
FED. ROAD DIST. NO.		ILLINOIS FED. AID PROJECT		

CONTRACT NO. 68200

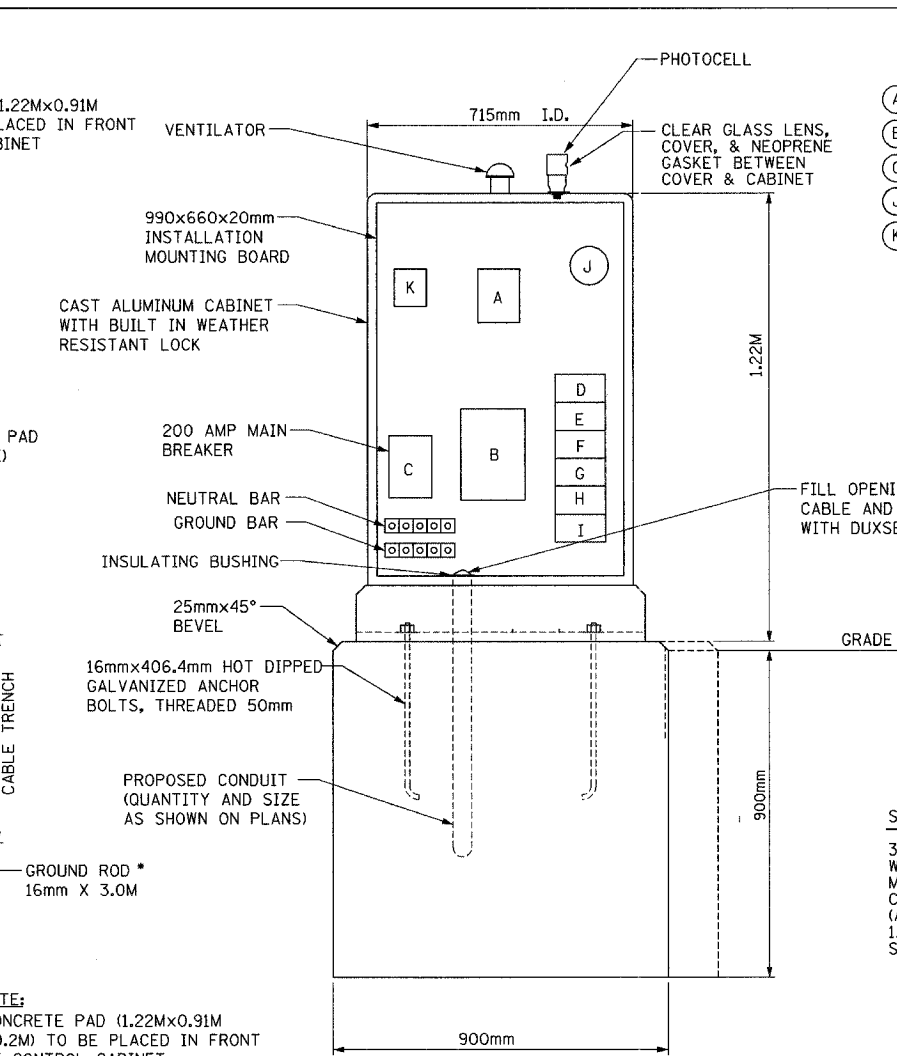


CABINET & FOUNDATION
(SIDE VIEW)

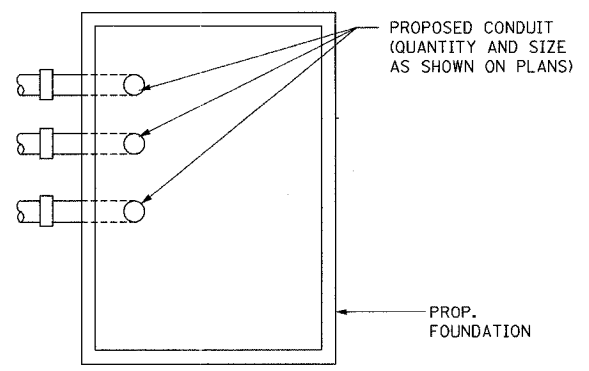
* THE COST OF THE GROUND ROD AND GROUND CLAMP SHALL BE INCLUDED IN THE PAY ITEM " LIGHTING CONTROLLER."

THE FOLLOWING SHALL BE INCLUDED IN THE CONTROLLER CABINET:
 -GFI SERVICE RECEPTACLE.
 -CAGE MOUNTED SERVICE LIGHT FIXTURE WITH ON/OFF SWITCH.
 -STEP DOWN TRANSFORMER WITH SECONDARY FUSING.

THESE ITEMS SHALL BE INCLUDED IN THE PAY ITEM " LIGHTING CONTROLLER TYPE CB-RCS , 200AMP-480VOLT "

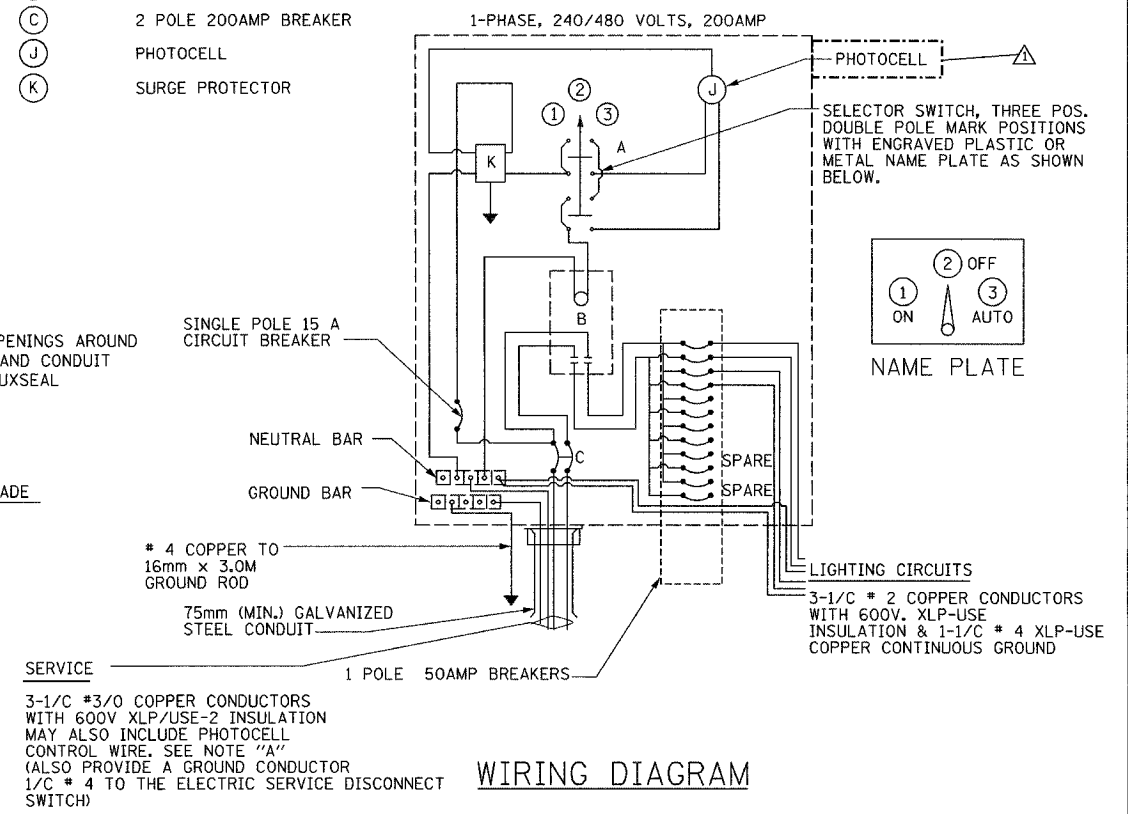


CABINET FOUNDATION & DIAGRAMMATIC ASSEMBLY
(FRONT VIEW)



TOP OF FOUNDATION

- (A) SELECTOR SWITCH
- (B) 2 POLE 200AMP CONTACTOR
- (C) 2 POLE 200AMP BREAKER
- (J) PHOTOCELL
- (K) SURGE PROTECTOR



WIRING DIAGRAM

NOTE:
 WIRING SHALL BE PANEL BOARD FASHION. ALL BENDS SHALL BE RIGHT ANGLES. ALL RUNS SHALL BE VERTICAL OR PARALLEL TO PANEL BOARD. WIRES SHALL BE GROUPED OR LACED

NOTE "A"
 THE UNDERGROUND SERVICE SHALL BE 9.14M MINIMUM AND 45.7M MAXIMUM. TOTAL AERIAL & UNDERGROUND SERVICE BETWEEN THE CONTROL INSTALLATION AND PRIMARY TRANSFORMER SHALL NOT EXCEED 76M.

LIGHTING SHEET 40 OF 64

REVISIONS	
NAME	DATE
ADDENDUM #1	MAY 27 2005

ILLINOIS DEPARTMENT OF TRANSPORTATION
 PROPOSED LIGHTING CONTROLLER WIRING AND DETAILS
 TYPE CB-RCS-200

DATE: 11/12/04
 DRAWN BY DJK
 CHECKED BY MKR

ab **alfred benesch & company**
 CONSULTING ENGINEERS
 205 NORTH MICHIGAN AVENUE, CHICAGO, ILLINOIS 60601

m:\proj\3573\LIGHTING\4Contract ID\1000-7a_Controller.dgn

1:40:08 PM

4/21/2005