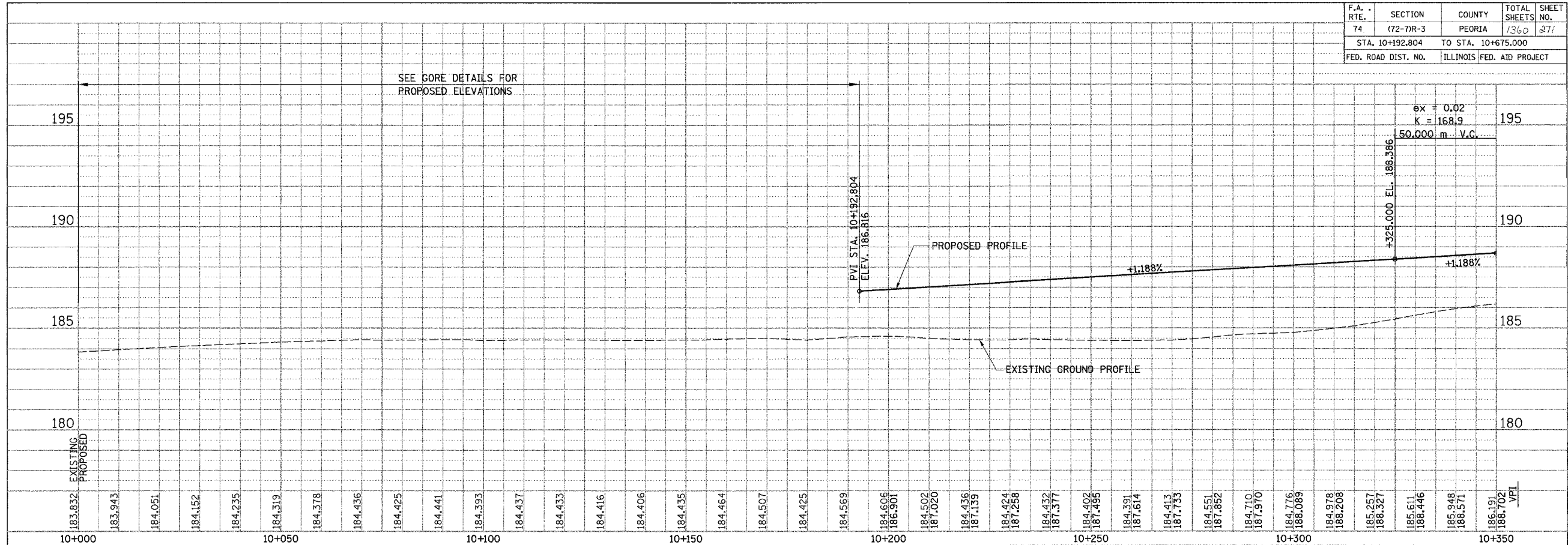
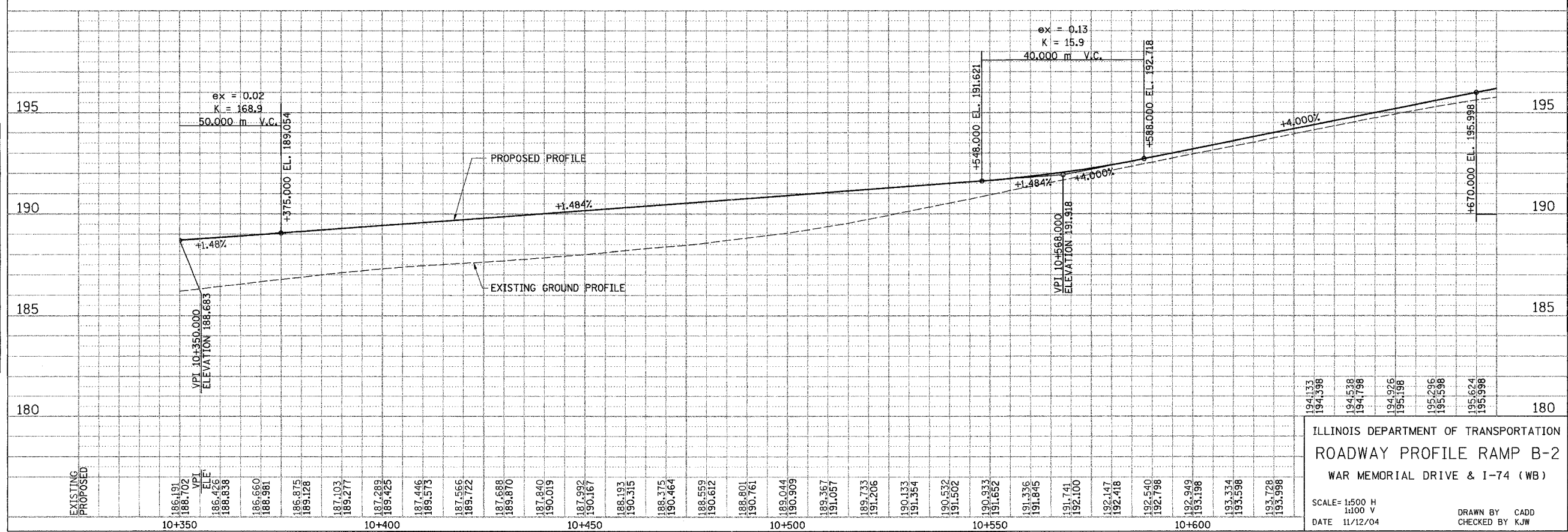


F.A. RTE.	SECTION	COUNTY	TOTAL SHEETS	SHEET NO.
74	(72-7)R-3	PEORIA	1360	271
STA. 10+192.804		TO STA. 10+675.000		
FED. ROAD DIST. NO.		ILLINOIS FED. AID PROJECT		

FINAL SURVEY	BY	DATE
SURVEY PLOTTED		
NOTE BOOK TEMPLATE		
AREAS CHECKED		
NO.		



ORIGINAL SURVEY	BY	DATE
SURVEY PLOTTED		
NOTE BOOK TEMPLATE		
AREAS CHECKED		
NO.		



ILLINOIS DEPARTMENT OF TRANSPORTATION  
**ROADWAY PROFILE RAMP B-2**  
 WAR MEMORIAL DRIVE & I-74 (WB)

SCALE = 1:500 H  
 1:100 V  
 DATE 11/12/04

DRAWN BY CADD  
 CHECKED BY KJW