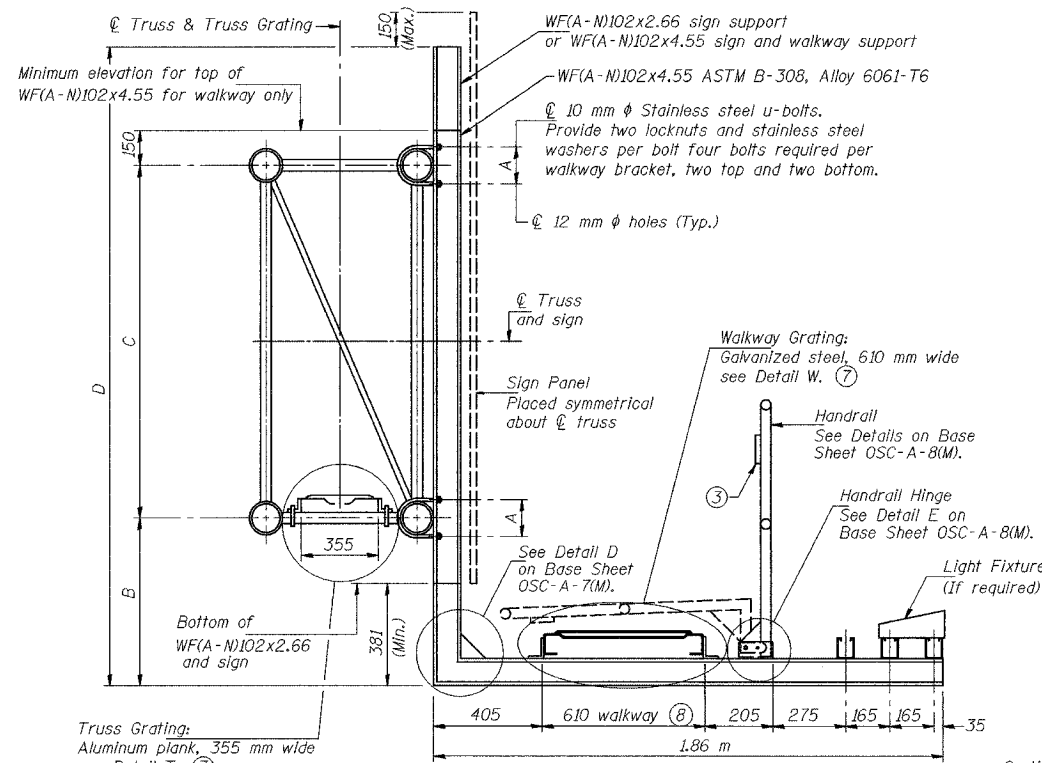
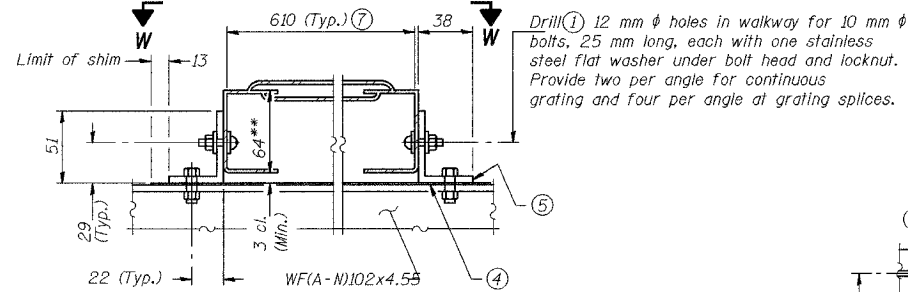


STATE OF ILLINOIS
DEPARTMENT OF TRANSPORTATION

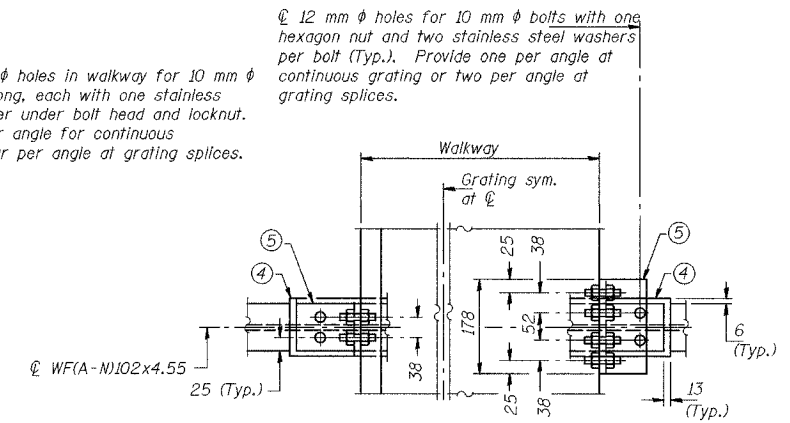
ROUTE NO.	SECTION	COUNTY	TOTAL SHEETS	SHEET NO.
FAI 74	*	PEORIA	1360	1326
STA.		TO STA.		
F.H.W.A. REGION		ILLINOIS	PROJECT	
*(72-7)R-3		CONTRACT NO. 68200		



SECTION B-B

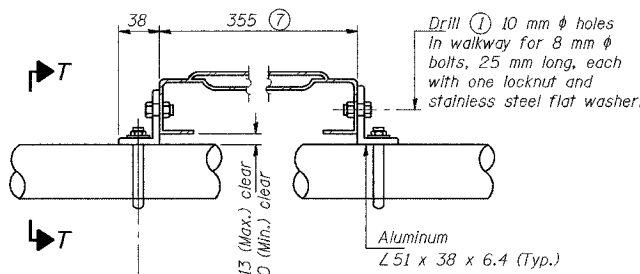


DETAIL W
GALVANIZED STEEL WALKWAY GRATING

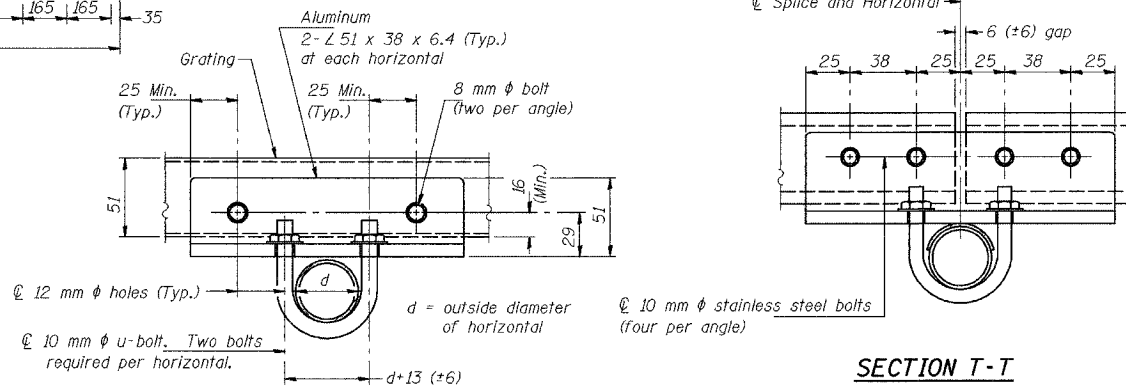


WALKWAY GRATING CONTINUOUS AT WALKWAY GRATING SPLICE

SECTION W-W



DETAIL T
(Truss Grating at Horizontal)



SECTION T-T
(Truss Grating Continuous)

SECTION T-T

(Truss Grating Splice)
Details not shown same as Section T-T.
Alternate splice details and locations may be used subject to the Engineer's review and approval.

ALUMINUM TRUSS GRATING

Structure Number	Station	A (m)	B (m)	C (m)	D (m)
4C072U150R024.7	39+700	0.215	0.307	2.130	2.593
4C072U150R024.9	40+105	0.215	0.231	2.130	2.441

Walkway Grating, Walkway Supports, Handrail and Lighting are not included.
Information shown on this sheet shall be used for Truss Grating and Sign Supports only.

NUMBER	REVISION	DATE

DESIGNED	RJW	2004
CHECKED	KJN	EXAMINED
DRAWN	RJW	PASSED
CHECKED	KJN	ENGINEER OF BRIDGES AND STRUCTURES

OSC-A-7S(M) 11/1/2002

- Drilling holes in grating may be done in shop or field, based on Contractor's preference and subject to accurate alignment.
- When truss grating must be spliced, use suggested details or other methods in accord with grating manufacturer's recommendation and subject to the Engineer's review and approval.
- 3 mm x 13 mm x 50 mm welded to handrail posts to protect locations that contact grating.
- 1.6 (or 16 ga.) x 64 mm x 102 mm stainless steel shim adhered to top of WF(A-N)102x4.55 beneath each galvanized angle. (Typ.) Adhesives for shims shall be suitable for materials joined and full exposure conditions.
- Galvanized steel Z51 x 38 x 6.4, 89 mm long with continuous grating 190 mm long at grating splice.
- Details shown are considered equal alternatives to Aluminum Walkway Details and may be substituted by Contractor at no charge in contract cost.
- Perforated or expanded metal grating providing a skid resistant (non-serrated) surface and capable of supporting a 2.22 kN concentrated load with a 1.83 m clear span. Walkway and truss grating dimensions are nominal and may vary (width ± 13 mm, depth ± 13 mm) based on available standard sizes. Cut ends of grating shall be free of burrs or hazardous projections and coated with zinc-rich primer or equivalent.

SIGNING SHEET 78 OF 83

CANTILEVER SIGN STRUCTURES
ALTERNATE WALKWAY DETAILS

ILLINOIS DEPARTMENT OF TRANSPORTATION
SIGNING PLAN
WAR MEMORIAL DR. STA. 39+700, 4C072U150R024.7
WAR MEMORIAL DR. STA. 40+105, 4C072U150R024.9

PEORIA CO., IL.

DATE: 11-04

M:\Proj\3573\Sign Structures\Contract 10\sp\003-7Acan-alm.dgn