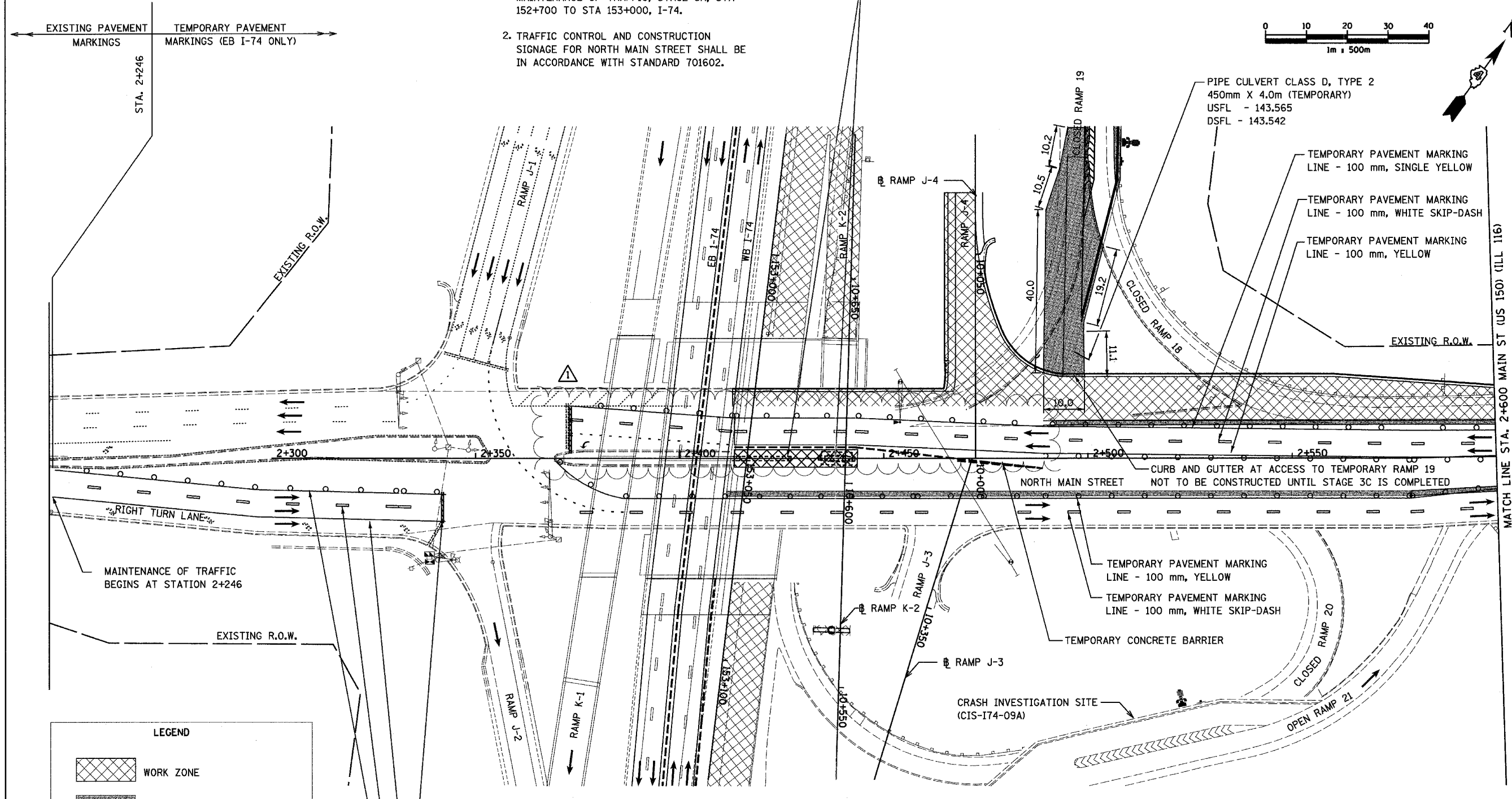
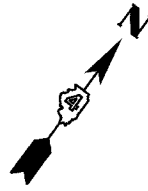
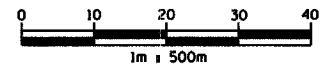


I:\projects\11011311\11011311.dwg: 5/27/2005 10:04:38 AM

F.A.I. RTE.	SECTION	COUNTY	TOTAL SHEETS	SHEET NO.
74	(90-11)R-2; 90(13,14,14-1)R-1	TAZEWELL	1366	179
STA.	2+300	TO STA.	2+600	
FED. ROAD DIST. NO. 4		ILLINOIS	FED. AID PROJECT	

- NOTES:**
- PROPOSED CONSTRUCTION OF RAMP 19 AT ITS CONNECTION TO MAINLINE I-74 IS SHOWN ON MAINTENANCE OF TRAFFIC, STAGE 3A, STA 152+700 TO STA 153+000, I-74.
  - TRAFFIC CONTROL AND CONSTRUCTION SIGNAGE FOR NORTH MAIN STREET SHALL BE IN ACCORDANCE WITH STANDARD 701602.



**LEGEND**

	WORK ZONE
	TEMPORARY PAVEMENT
	TEMPORARY PAVEMENT MARKING
	TEMPORARY CONCRETE BARRIER
	TRAFFIC FLOW DIRECTION
	SIGN, SEE GENERAL NOTES AND LEGEND SHEET FOR SIGN TYPE
	DRUM WITH STEADY BURNING MONO-DIRECTIONAL LIGHT

- TEMPORARY PAVEMENT MARKING LINE - 600 mm, WHITE, STOP BAR
- TEMPORARY PAVEMENT MARKING LINE - 150 mm, WHITE
- TEMPORARY PAVEMENT MARKING LINE - 100 mm, WHITE SKIP-DASH
- TEMPORARY PAVEMENT MARKING LINE - 100 mm, YELLOW

THIS MAINTENANCE OF TRAFFIC PLAN SHOWS SPECIAL TRAFFIC CONTROL IN THIS AREA. IN ADDITION TO THE SPECIAL TRAFFIC CONTROL DETAILS SHOWN, IDOT TRAFFIC CONTROL HIGHWAY STANDARDS SHALL APPLY WHERE APPLICABLE AND AS DIRECTED BY THE ENGINEER. SEE TRAFFIC NOTES ON THE CONSTRUCTION SEQUENCING SHEET FOR STAGE 3A-3 FOR APPLICABLE IDOT HIGHWAY STANDARDS.

REVISIONS	
NAME	DATE
	MAY 27 2005



ILLINOIS DEPARTMENT OF TRANSPORTATION  
 F.A.I. ROUTE 74 (I-74)  
 MAINTENANCE OF TRAFFIC  
 STAGE 3A-3a  
 NORTH MAIN STREET 2+300 TO 2+600  
 DRAWN BY KMO  
 CHECKED BY RTG  
 DATE 12/20/2004

SHIFTED TRAFFIC TO WEST

CURB AND GUTTER AT ACCESS TO TEMPORARY RAMP 19 NOT TO BE CONSTRUCTED UNTIL STAGE 3C IS COMPLETED

CRASH INVESTIGATION SITE (CIS-I74-09A)

MAINTENANCE OF TRAFFIC BEGINS AT STATION 2+246

EXISTING PAVEMENT MARKINGS      TEMPORARY PAVEMENT MARKINGS (EB I-74 ONLY)

STA. 2+246

EXISTING R.O.W.

EXISTING R.O.W.

EXISTING R.O.W.

MATCH LINE STA. 2+600 MAIN ST (US 150) (ILL 116)